

UN/CEFACT Standards for International Supply Chain Data Model Harmonisation & Trade Facilitation

**VIRTUAL REGIONAL WORKSHOP ON
DIGITALIZATION OF TRADE DOCUMENTS IN
STKEC REGION 25 May 2022**

New Generation of Global Standards for Trade
and Transport Data and Document Exchange

Sue Probert

Chair, UN/CEFACT

suesiprobert@live.com

The UN/CEFACT logo is positioned on the right side of the slide. It consists of a vertical stack of colorful lines (pink, blue, green, orange, grey) that transition into a network diagram of interconnected nodes and lines at the bottom. The text 'UN / CEFACT' is written in blue capital letters across the middle of the graphic.



Cooperation / Collaboration



UN / CEFACT

Copyright UNECE

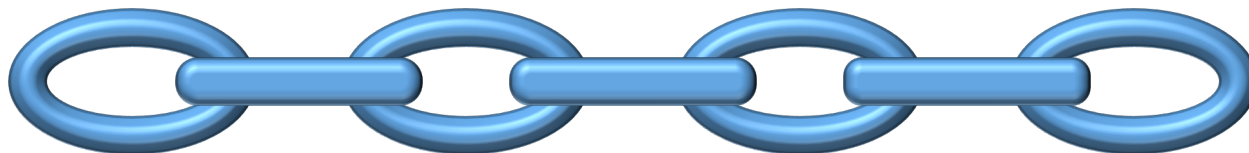


UN/CEFACT Deliverables



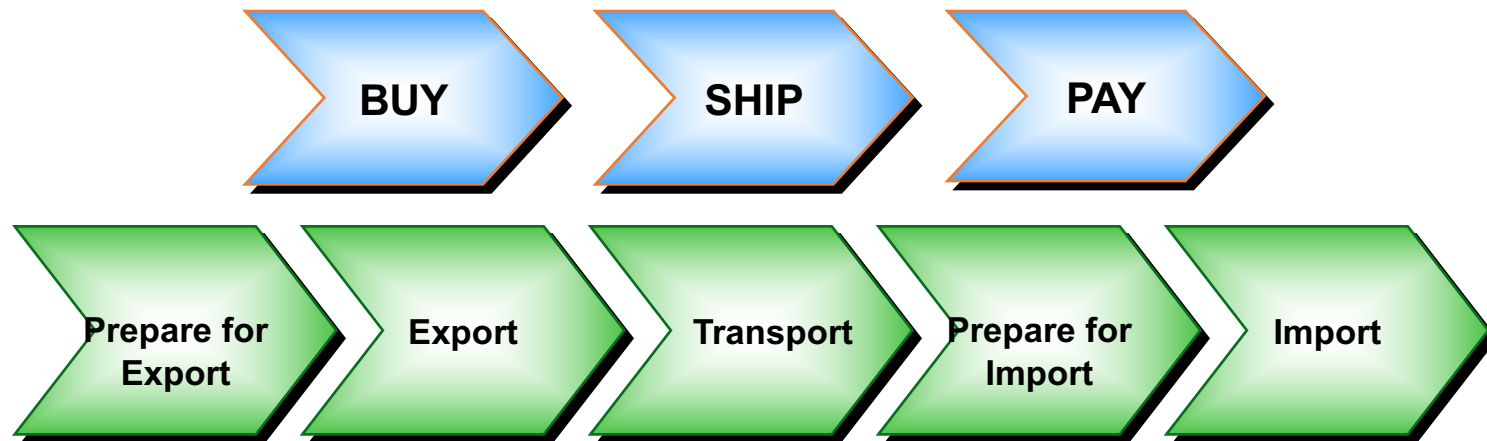
- Internationally agreed recommendations
- Internationally agreed e-business standards
- Common Libraries
- Common Directories
- Code Lists

One link in a global supply chain

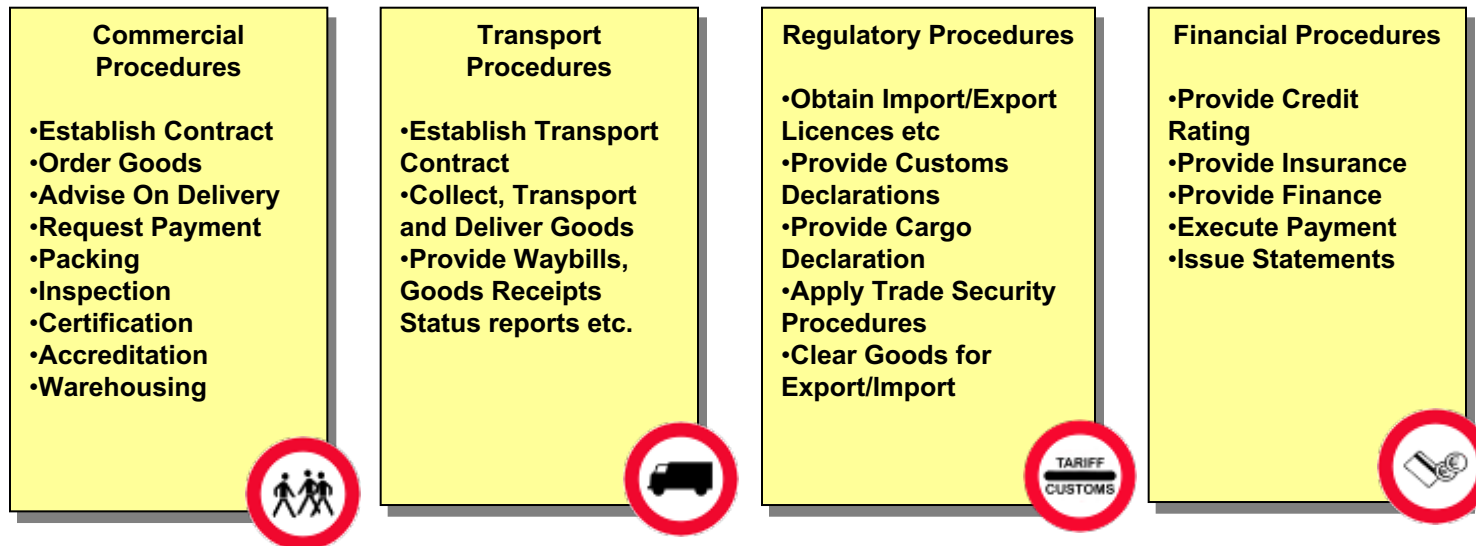


- Most dematerialization projects are only looking at one sectoral view
 - Almost all sectoral views are just one part of a global supply chain
 - The international supply chain is very complex (multiple actors and multiple relations in data exchanges)
- A holistic view and approach are needed
 - Information will not be related purely to goods or purely to transport or purely to regulatory
 - There are clear links between the information in each part of the global supply chain
- UN/CEFACT deliverables all take this holistic approach

UN/CEFACT International Supply Chain Process Model

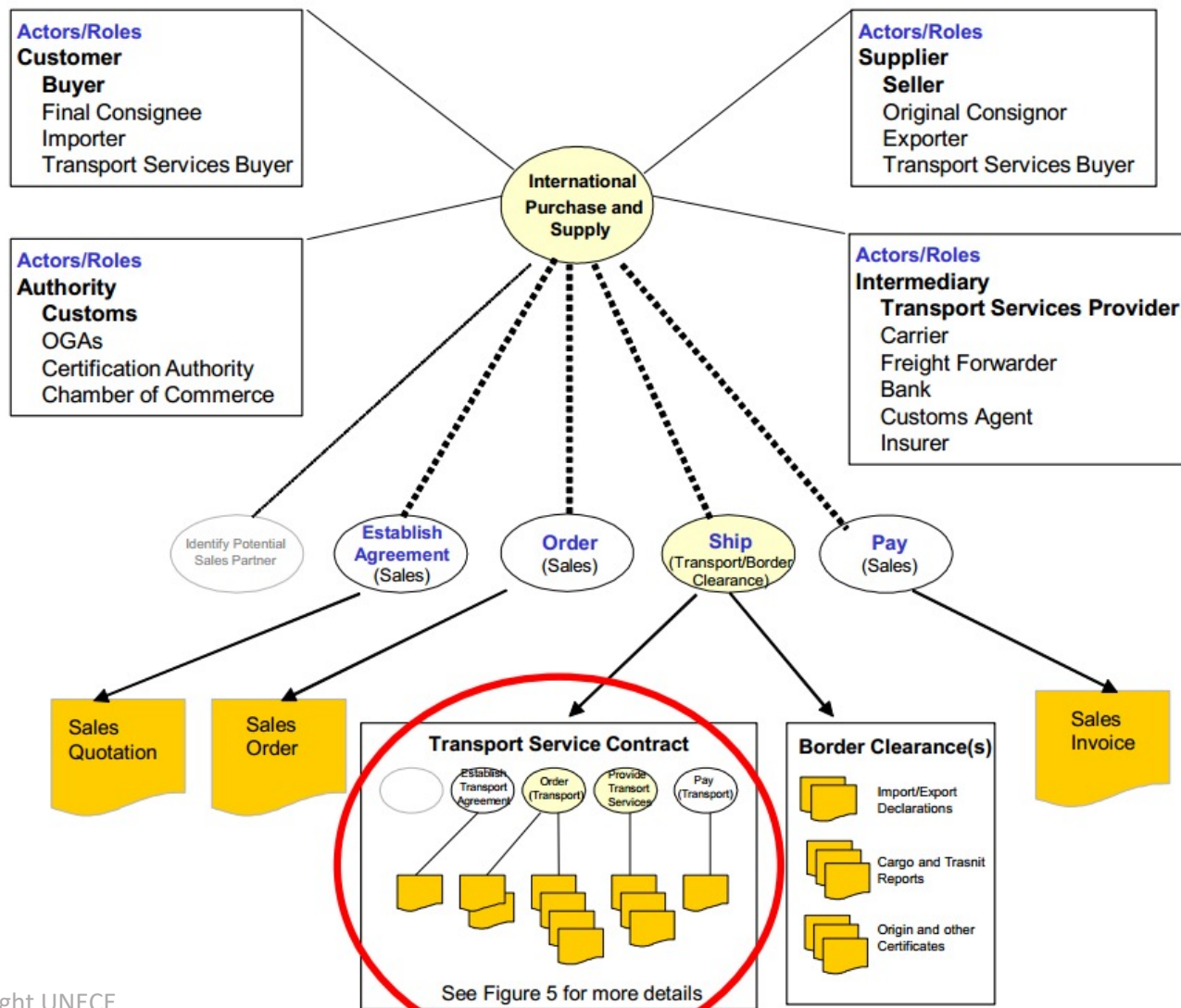


INVOLVES



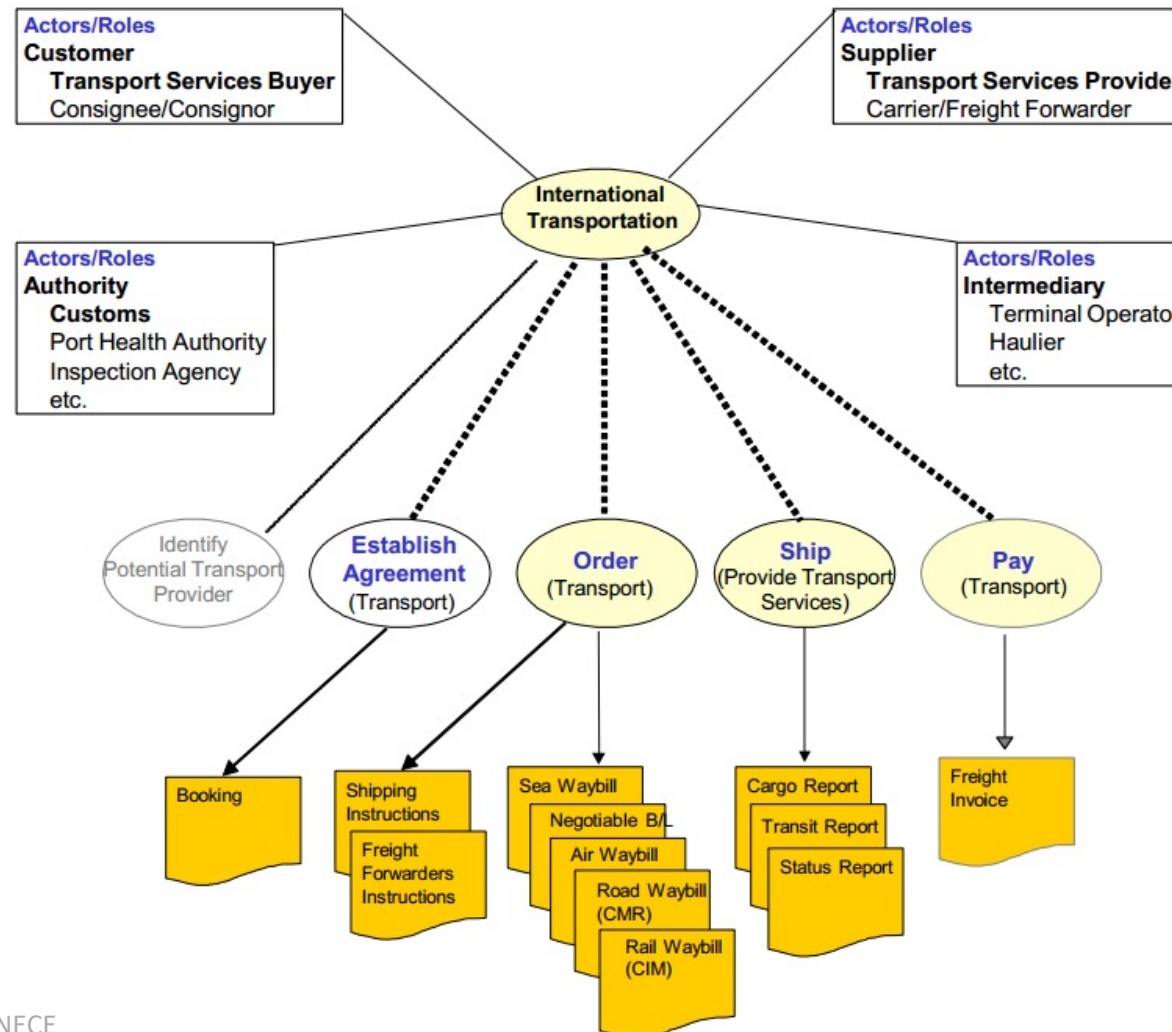
Focusing on the Sales Contract

The Sales Order Contract



And now the Transport Contract

The Transport Service Contract



International Supply Chain B2B Data Exchange Families

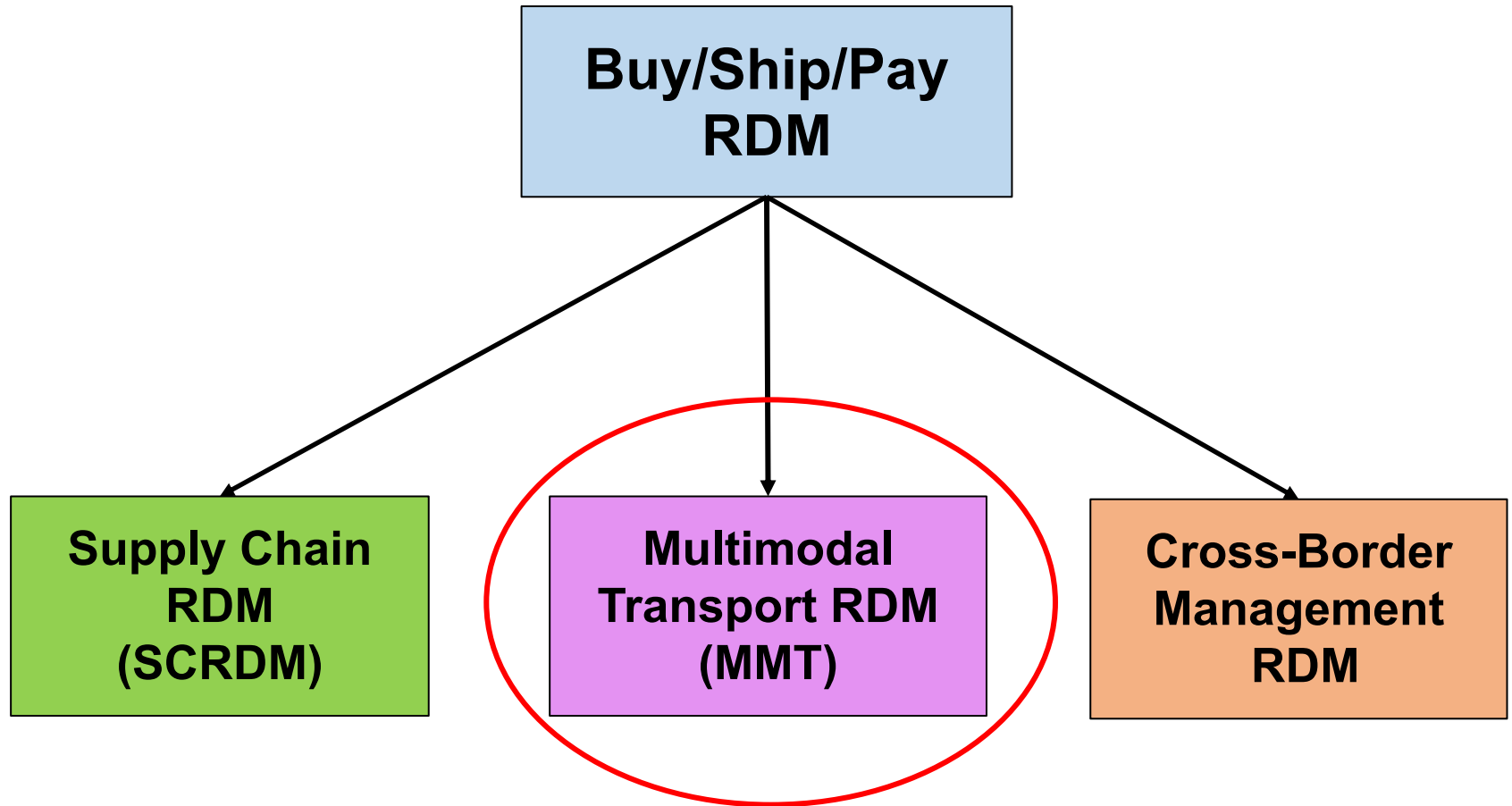




UN/CEFACT Global Supply Chain RDMs Today

- Based on UNCCL (Core Component Library)
- Result of contributions from 100s of supply chain experts over 20 years including very significant inputs from GS1 experts
- >100 Data Exchange Message structures
- Biannual publications
- Latest published versions D21B
- Publication formats html/UML, xlsx, profile xsd and future JSON schema
- References UNTDED and UN/EDIFACT (and EANCOM)
- Includes global identifier attributes throughout and alignments to EPCIS
- Aligned to international regulations and conventions where applicable
- Extending to cover sustainability and circular economy, eco tourism

UN/CEFACT International Supply Chain Reference Data Model Family



Copyright UNECE

Core Component Dictionary Entry Names and Definitions

Data model: MMT D20A Context CCL - GEFEG.FX - Professional+

Edit View Publishing Extras Window Help

Show used objects only English

MMT D20A Context CCL Main ABIE Logistics Transport Means Name (Logistics_ Transport Means. Name. Text)

Logistics Transport Means *

- Type Code
- Type Text *
- ID *
- Name ***
- Gross Weight
- Net Weight
- Length
- Draught Level Measure
- Cargo Gross Weight
- Required Lane Length
- Loaded Cargo Measure
- Sequence Number *
- Driver Accompanied Indicator *
- Conference Code *
- Manoeuvring Speed
- Forward Draught Level Measure
- Aft Draught Level Measure
- Waste Reporting Exemption Indicator *
- Helipad Indicator *
- ISPS Security Level Code *
- Approved Security Plan Onboard Indicato
- Tare Weight Measure
- Manufacturing Date Time

BBIE	CCTS	Notes	Enhanced	Children
CCTS type	BBIE			
DictionaryEntryName	Logistics_ Transport Means. Name. Text			
ObjectClassTerm	Transport Means			
ObjectClassTermQualifier(s)	Logistics			
PropertyTerm	Name			
PropertyTermQualifier				
RepresentationTerm	Text			
BusinessTerm				
Definition	The name, expressed as text, of this logistics means of transport.			

Replace object name with DictionaryEntryName

Business Name

Definition

Tripartite Dictionary Entry Name

Built-in mappings to UNTDED, UN Layout Key and UN/EDIFACT



M Data model: MMT D20A Context CCL - GEFEF.FX - Professional+

File Edit View Publishing Extras Window Help

Show used objects only English

ABIE > C Logistics Service Charge > A Payment Arrangement Code (Logistics_Service Charge. Payment Arrangement. Code)

TC154

UID 4237

TDED repr. AWB: L 24, P 51-52 or 52-53 and P 55-56 or 57-58
CIMP: (403):a1
GMR: a1 P = prepaid, C = collect

Locations, Bridges

Dictionary Entry Name Payment Arrangement Code

Definition Code specifying the arrangements for a payment.

Links to UNCL

Oper

Notes for September MA meeting

TBG15 Notes April 2004

June 7372MA meeting update

BN

BN Payment Arrangement Code

Pub Refs

Identifier UN01003724

Ref qDT ID UN02000150

Usage Rules

Example

Version

TDED (4237)

UNTDED

UN Layout Keys

UNCL Codes

UNTDID
EDIFACT

M Data model: MMT D20A Context CCL - GEFEF.FX - Professional+

File Edit View Publishing Extras Window Help

Show used objects only English

C Logistics Service Charge > A Payment Arrangement Code > A Code. Content

CC

CCS

Notes

External code lists Codes Enhanced Children

Restrict codes

Code	Name
C A	Payable elsewhere
C B	Third party to pay
C C	Collect
C P	Prepaid

Name (EN) Collect

Description (EN) Charges are (to be) collected from the consignee at the destination.

ITIGG

PandR Ref

Comment

CustomsMap

WCO 3

WCO 2

EU SAD

ASEAN SAD

Basis for Semantic Interoperability

Agreed and Harmonised

- Party and Role Definitions
- Semantic Anchors
- Message Structures
- Contextualised Code Subsets
- Contextualised Business Rules

https://unece.org/fileadmin/DAM/cefact/brs/BuyShipPay_BRS_v1.0.pdf



Global Trade – Semantic Anchors

Shipment (Trade Delivery)

- A shipment is an identifiable collection of one or more Trade Items (available to be) transported together from the Seller (Original Consignor/Shipper) to the Buyer (Final/Ultimate Consignee):
 - A Shipment can only be destined for one Buyer
 - A Shipment can be made up of some or all Trade Items from one or more Sales Orders
 - A Shipment can have only one Customs UCR
 - A shipment may form part or all of a Consignment or may be transported in different Consignments.

Consignment

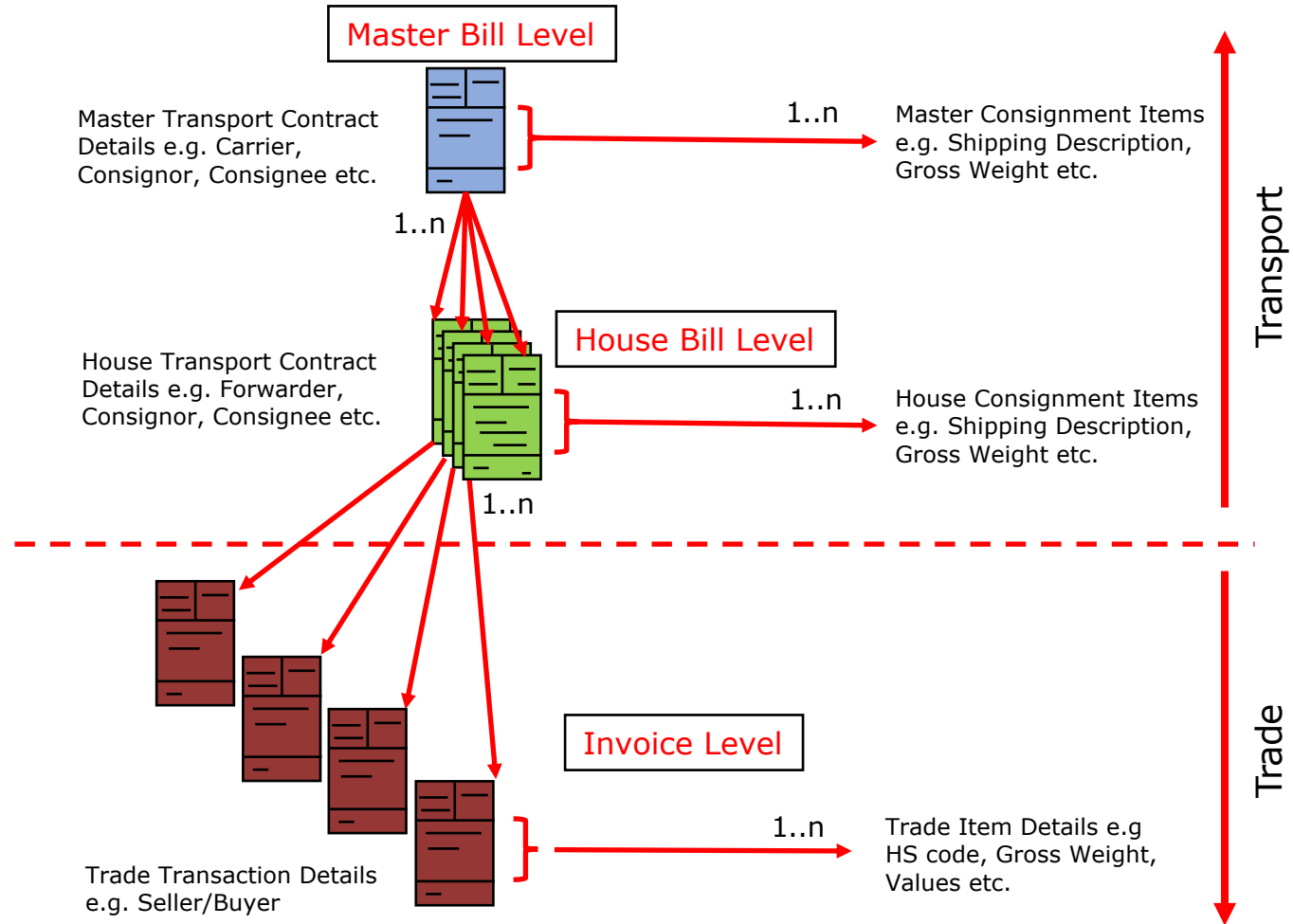
- A consignment is a separately identifiable collection of Consignment Items (available to be) transported from one Consignor to one Consignee via one or more modes of transport as specified in one single transport service contractual document:
 - A Consignment can only have one Transport Service Buyer
 - A Consignment can only have one Transport Service Provider
 - A Consignment can only have one Consignor
 - A Consignment can only have one Consignee
 - The Transport Service Buyer can be either the Consignor or the Consignee
 - A Consignment is made up of one or more Consignment Items
 - A Consignment can be made up of some or all Trade Items (aggregated into Consignment Items) from one or more Shipments

Aligned with WCO Data Model



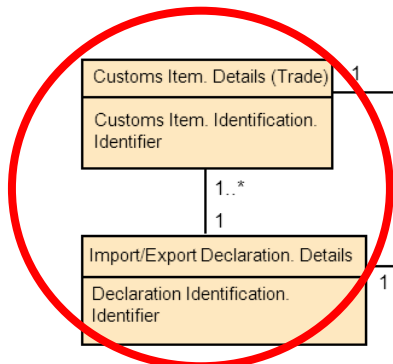
Copyright UNECE

Trade and Transport Semantics

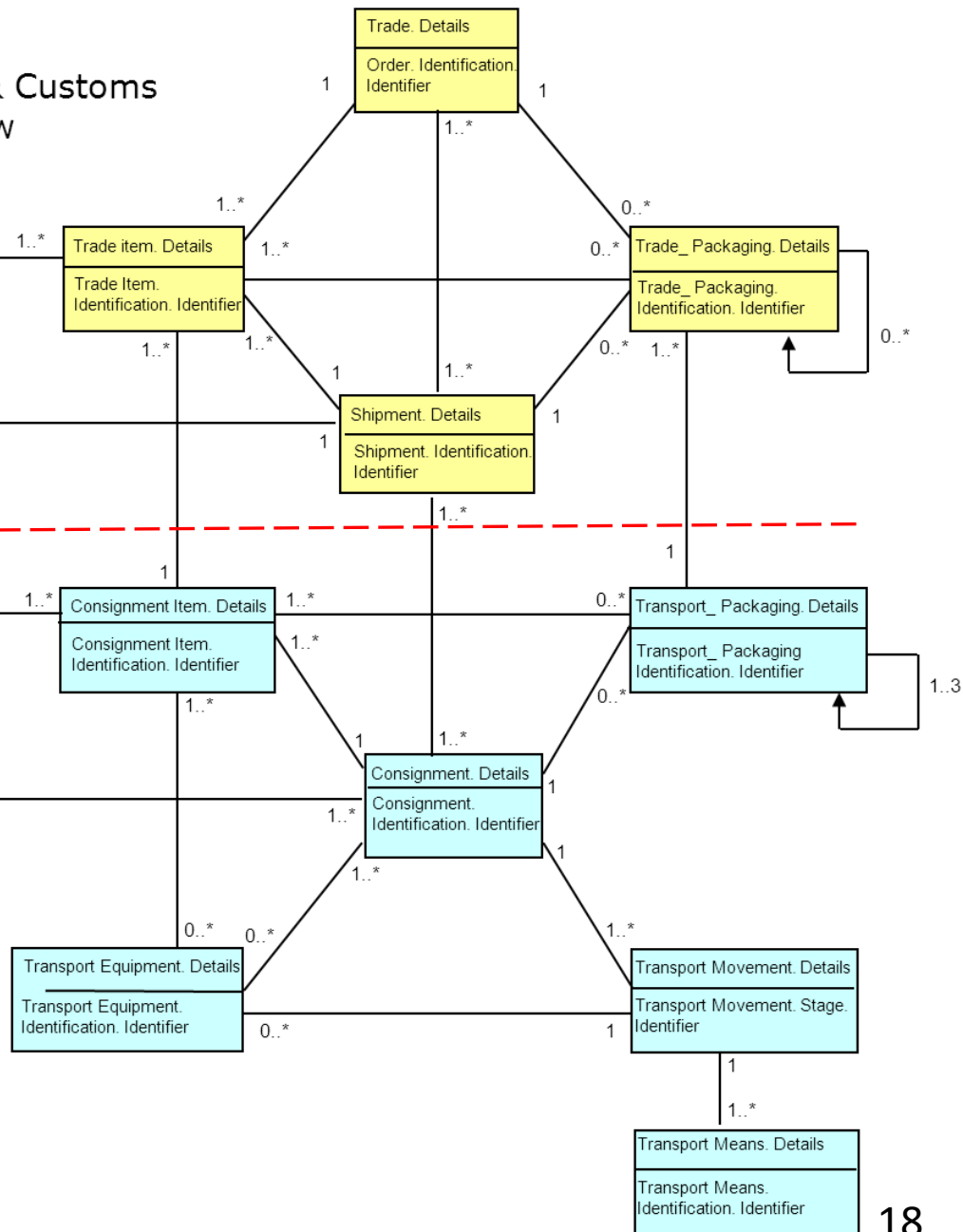
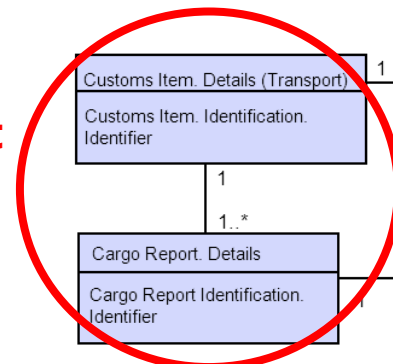


Buy/Ship/Pay – Cross-Border Trade, Transport & Customs Business Entity Overview

Trade Data



Transport Data



Support for JSON

- All RDM data exchange subsets to be published as JSON schema
- JSON schema export technical specification almost completed
- UN/CEFACT developing JSON-LD web vocabulary based on RDM semantics
- JSON deliverables to support future restful API developments

Modal Specific MMT-based Customisations



✓ Maritime



✓ Road



✓ Air



✓ Rail



✓ Inland Waterway

Inter Modal Matrix with MMT as Reference Model (Auto-generated)

	C	D	E	F	G	H	I	J	K	L	M	N	O
1	BN	FIATA Bill	CIM-SMGS	CIM-SMGS URL	Wagon List	River B/L	Maritime B/L	eCMR	EFTI DR FEB2021	EFTI DG to	Air Waybill	Air CSD	Air DG
2	BN	FIATA Bill	CIM-SMGS Co	CIM-SMGS Co	Wagon list; C	River Bill of Lading	Maritime B	eCMR MMT; R	EFTI DESCopy	MMT Cont	Air Wayb	CSD; D21	DG Decla
3	MMT CCBDA IFTM** Data Exchange Structure	X	X	X	X	X	X	X	X	X	X	X	X
4	Exchanged Document Context							X					
10	Exchanged Document	X	X	X	X	X	X	X			X	X	X
11	ID	X	X	X	X	X	X	X			X	X	X
12	Name												
13	Type Code					X	X	X			X	X	X
14	Issue Date Time	X	X	X	X	X	X	X			X	X	X
15	Remark							X					
16	Original Issued Quantity	X				X							
17	Copy Issued Quantity	X				X							
18	Purpose Code		X	X							X	X	X
19	Sender Assigned ID		X	X									
20	Recipient Assigned ID		X	X									
21	Version ID		X										
22	Note		X	X				X				X	
23	Subject Text							X					
24	Content Code							X					
25	Content Text		X	X				X				X	
26	Subject Code							X				X	
27	Reference Document		X	X									
28	Type Code		X	X									
29	Issue Location	X				X	X	X			X		X
30	ID	X				X	X	X			X		X
31	Name	X				X	X	X			X		X
32	Country Code	X						X					
33	Contractual Clause	X	X	X							X		
34	ID	X									X		
35	Content Text	X	X	X							X		
36	Air Waybill Consignor Signatory Authentication	X	X	X	X						X		
37	Actual Date Time	X	X	X							X		

Copyright UNECE

For further Information

- All UNECE and UN/CEFACT Recommendations, codes, standards and publications are available for free on our website at:
- www.unece.org/cefact/ and tfig.unece.org
- All experts are welcome to join the standards development work free of charge

UN/CEFACT Secretariat

- Maria Ceccarelli maria.ceccarelli@un.org