



## TradeXchange, Integrated IT Platform for Trade

Workshop on Single Window Development  
for CAREC Trade and Customs Officials

9 July 2008

*Jonathan Koh*  
Director, Solutions & Consulting

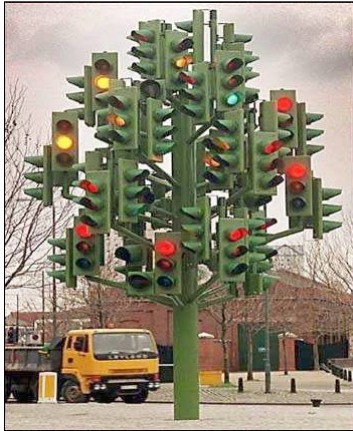


## TradeNet® - 1989 to 2007

- 100% of the total Trade Permit applications are processed by the TradeNet® system. The Singapore Government has mandated the electronic submission of Trade Permit Application.
- The TradeNet® system handles approximately **30,000 permit applications per day**, amounting to some **9 million transactions a year**.
- The TradeNet® system is used by approximately **2,500 companies with 8,000 users**.

Source: UN / CEFACT Single Window Repository website  
United Nations Centre for Trade Facilitation and Electronic Business  
[http://www.unece.org/cefact/single\\_window/](http://www.unece.org/cefact/single_window/)

## TradeNet - What Next?



- TradeNet® facilitated business-to-government transactions only
- Users still have to access some disparate, stand-alone systems to perform trade transactions
- Increasing threat of regional competition

## The Next Generation TradeNet - TradeXchange

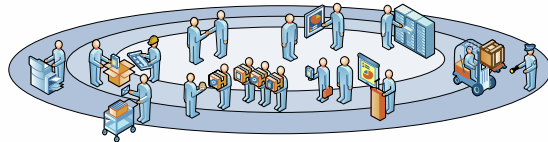
### The response... **TRADEXCHANGE™**

- Neutral IT platform to provide seamless interconnectivity among commercial and regulatory systems to facilitate the flow of goods within, through and out of Singapore for the trade and logistics businesses to serve the 21st century and beyond
- The new TradeNet® Ver 4.0 is a core application of Tradexchange™
- Estimated savings: about USD 48 million over 10 years
- Roll-out: Oct / Nov 2007
- Prospective no. of users: 90,000

# The TradeXchange® Vision

To Increase SMEs' Competitiveness & Capabilities

To provide a low-cost Community Platform For Trade and Logistics



Facilitate Logistics Hubbing for MNCs

To promote a vibrant Trade Software Provider industry

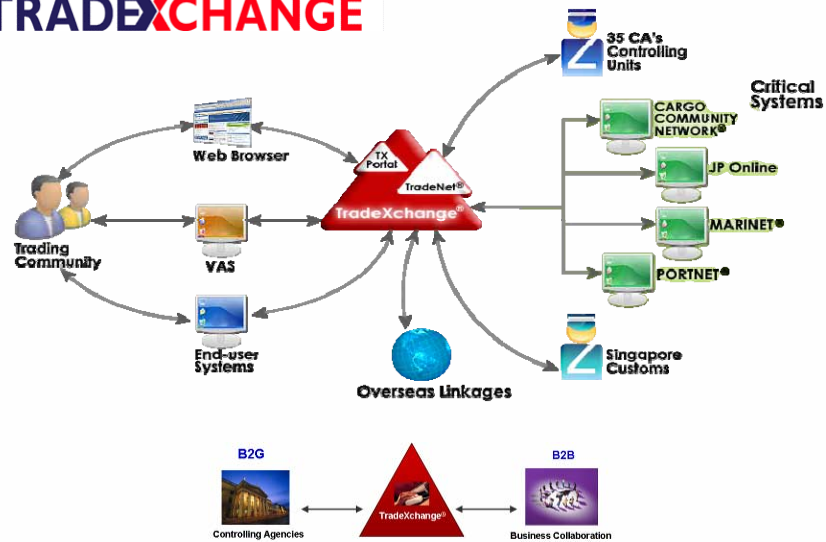
## Expected Outcomes

Global Integrated Logistics Hub

Spin-off Industries

# TradeXchange® Overview

## TRADEXCHANGE™



## Values Added Services

### Overseas Highway Manifest

Electronic submission of advanced manifest data to United States (AMS), Canada (ACI) and Australia (CMR).

### Overseas Highway Customs

Sending of data electronically for customs clearance in Malaysia, Taiwan, Korea, Macau, Shanghai, Hong Kong, Philippines, Thailand, Canada and Australia.

### Shipping Line linkages

Connectivity to Intra & GT Nexus for the sending and receiving relevant messages to and from shipping lines (Booking, Draft BL, Status).

### IMS PortNet/CCN

Connectivity to PortNet and CCN for vessel/flight schedules and status.

### RAE RosettaNet Automated Enablement

Connects major industry players to their customers and suppliers for the exchange of commercial documents such as purchase order, packing list and invoice.

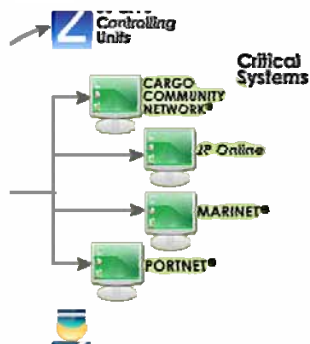
### Trade Declaration

Access for trade declaration submissions and permit information.

### Title Registry

Facilitates secured registration and transfer of the Title of goods and allows secured access to the Title record as needed in the export/import trade process.

## Critical Systems



- **Cargo Community Network (CCN)** - provides cargo community systems for the air cargo industry.
- **Portnet** - provides integrated IT services to the port stakeholders - shipping lines, hauliers, freight forwarders, shippers, ports, maritime communities and local government agencies operating in Singapore.
- **JP Online** - web-based transactional portal for Jurong Port container terminal.
- **Marinet** - an Internet gateway by the Maritime and Port Authority of Singapore (MPA) to provide e-commerce and information services for the maritime industry.

## Value Added Service (VAS) Providers

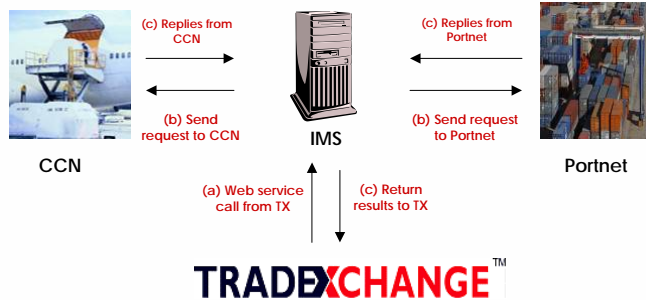
- VAS are commercial service providers that connect to TradeXchange® to deposit, extract or transmit information.
- Examples of such VAS include Freight Management and e-Procurement.



## IMS Portnet & CCN Linkages

### Inter-modal System (IMS) To TradeXchange® Interface

- IMS interface provides Sea/Air Schedule and tracking modules to critical system services.



## Shipping Line Linkages

- Send and receive relevant messages to and from shipping lines.
- The messages include:
  - Vessel Schedules
  - Cargo Bookings
  - Draft Bill of Lading
  - Track & Trace Status (e.g. Loaded on Vessel, Carrier Release, Container Out Gate, etc)



## Global Linkages Advanced Manifest Submission

- TradeXchange sends advanced manifest data electronically to the United States (AMS), Canada (ACI) and Australia (CargoReport)
- Other countries such as Hong Kong, Mexico, Korea and others will be available shortly.





■ **Canada Advance Commercial Information ACI**

Under ACI, carriers and freight forwarders will report cargo and conveyance data electronically within established timeframes in advance of the arrival of the cargo and conveyance in Canada to enable CBSA to identify goods of unknown or high risk.



■ **US Automated Manifest System AMS**

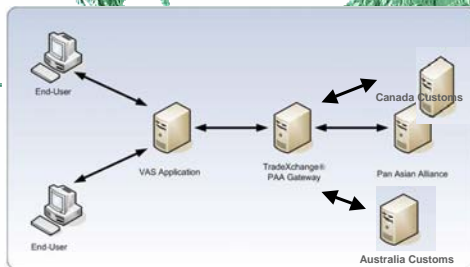
A multi-modular cargo inventory control and release notification system for sea and air carriers. AMS speeds the processing of manifest and waybill data.



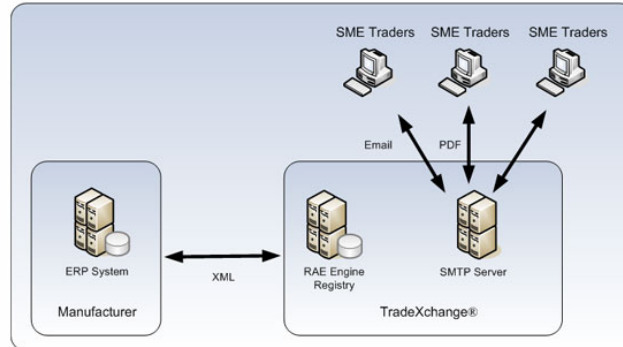
■ **Australia Integrated Cargo System ICS**

An initiative by Australian Customs requiring all parties who need to import or exports goods to send cargo report information.

- Send data for customs clearance via the PAA network to Malaysia, Taiwan, Korea, Macau, China, Hong Kong, Philippines and Thailand.
- Direct customs clearance connection to Australia and Canada.

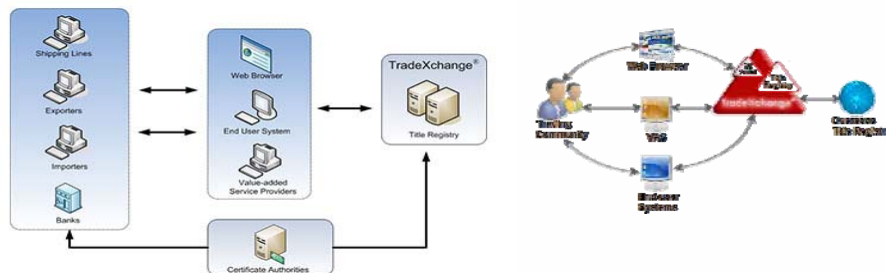


- The **RosettaNet Automated Enablement (RAE)** framework enables connection of trading partners for the exchange of commercial documents, such as purchase orders, invoices.



The Electronic **Title Registry** facilitate

- secured registration and transfer of the Title of goods and
- allow secured access to the Title record as needed in the entire export/import process.





### TradeXchange® will bring about quantum leap in the trade facilitation process in Singapore

- **Improve trade documentation process**
  - ❑ Business process re-engineering
  - ❑ Simplified permit declaration requirements
- **Lower Business Costs**
  - ❑ Single interface to multiple systems
  - ❑ Reduce errors from repeated data entry
- **Enhance Economic Competitiveness**
  - ❑ Position Singapore as a global trading hub
  - ❑ Create new sources of growth through innovative VAS development

#### Benefits

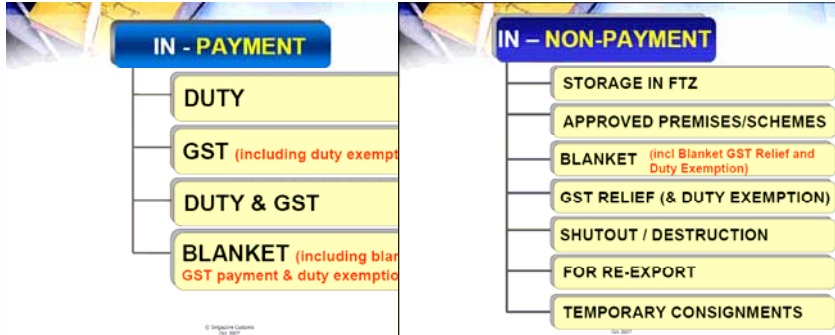
- Single interface for users
- Simplified permit structure with less declaration fields
- Incorporate other "end-to-end" services

### TradeXchange® will bring about quantum leap in the trade facilitation process in Singapore

- **Improve trade documentation process**
  - ❑ Business Process Re-engineering
  - ❑ Simplified permit declaration requirements
- **Lower Business Costs**
  - ❑ Single interface to more systems
  - ❑ Further reduce errors from repeated data entry
- **Enhance Economic Competitiveness**
  - ❑ Strengthen Singapore's position as a global trading hub
  - ❑ Create new sources of growth through innovative VAS development



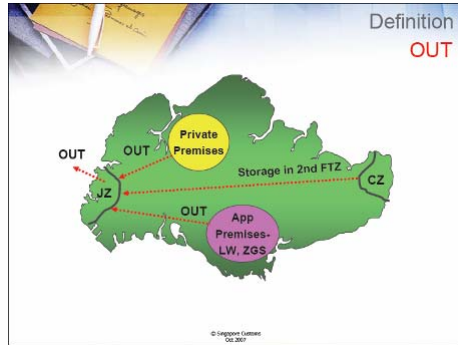
## FTZ Functionalities in TradeXchange



## FTZ Functionalities in TradeXchange



## FTZ Functionalities in TradeXchange



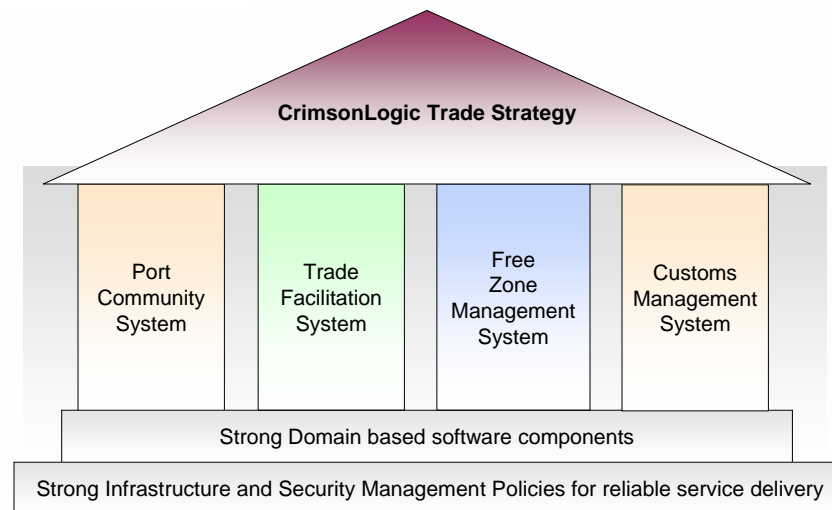
## Trade Facilitation & Port Community Platforms

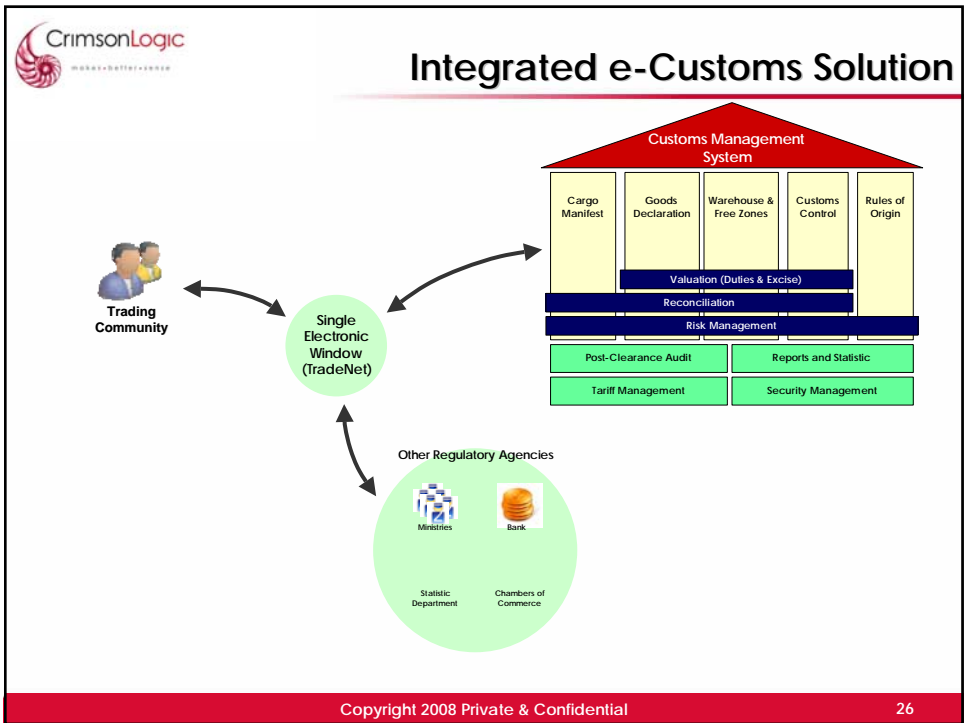
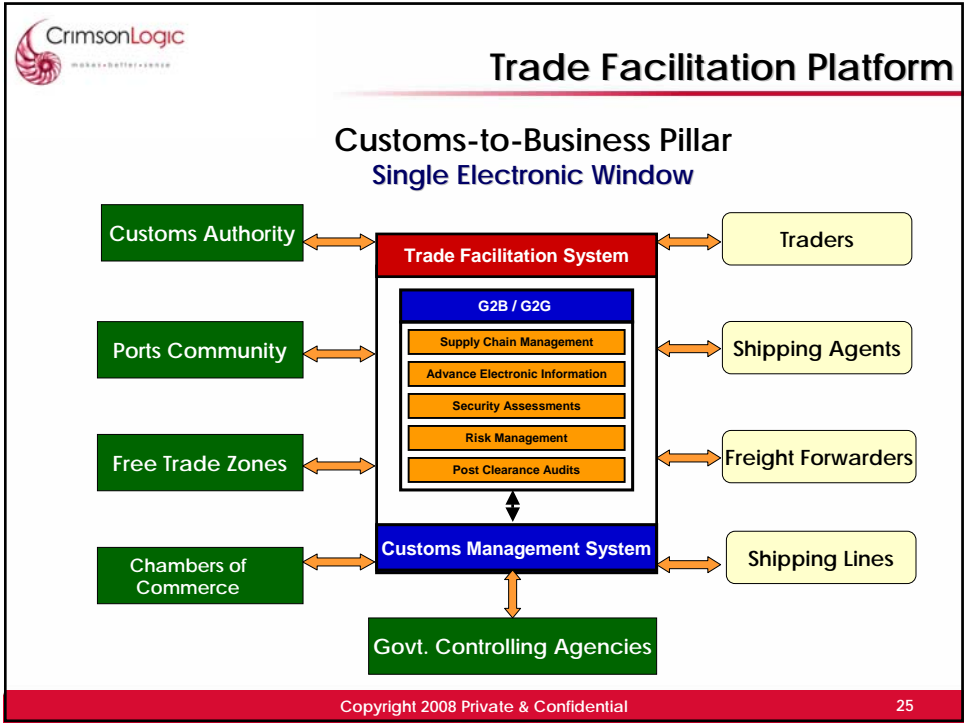


## Trade Facilitation Platform Solution Concepts

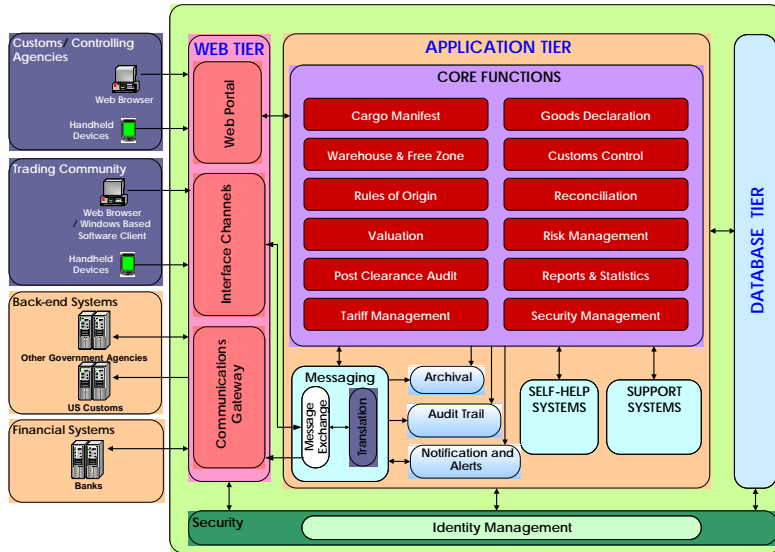
- **Single Window** - One-Stop Service G2B & B2B Portal for Trade & Port related Procedures.
- **Paperless environment** - maximising the use of electronic documents / electronic data interchange (EDI)
- **E-Commerce Platform** for electronic trade and modern working methods - Guidelines , Legal provisions
- **Harmonisation & Simplification** of existing practices & procedures – alignment to International and regional conventions
- **Data Collection** of accurate management and statistical information in order to make better business decisions
- **Risk management & Profiling** to reduce fraud
- **Zone Trade Community**
  - Green Lane / Super Green Lane
  - Electronic Funds Transfer / Collection for Customs

## Our Trade & Logistics Solutions

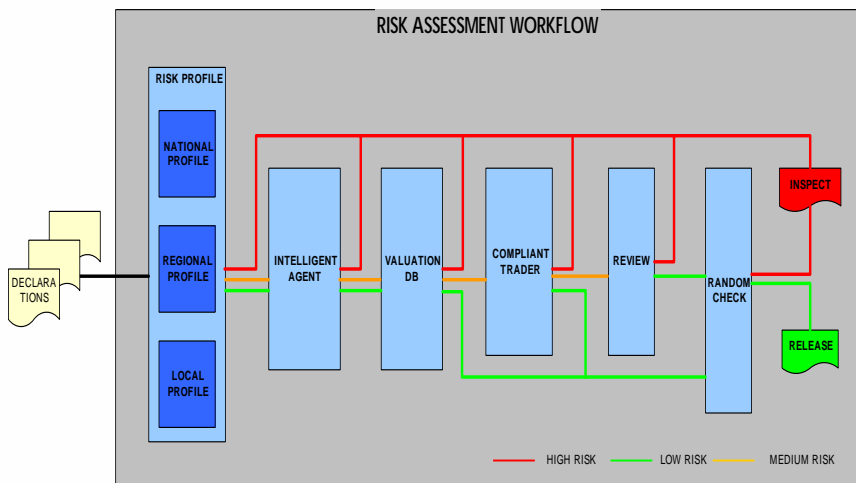


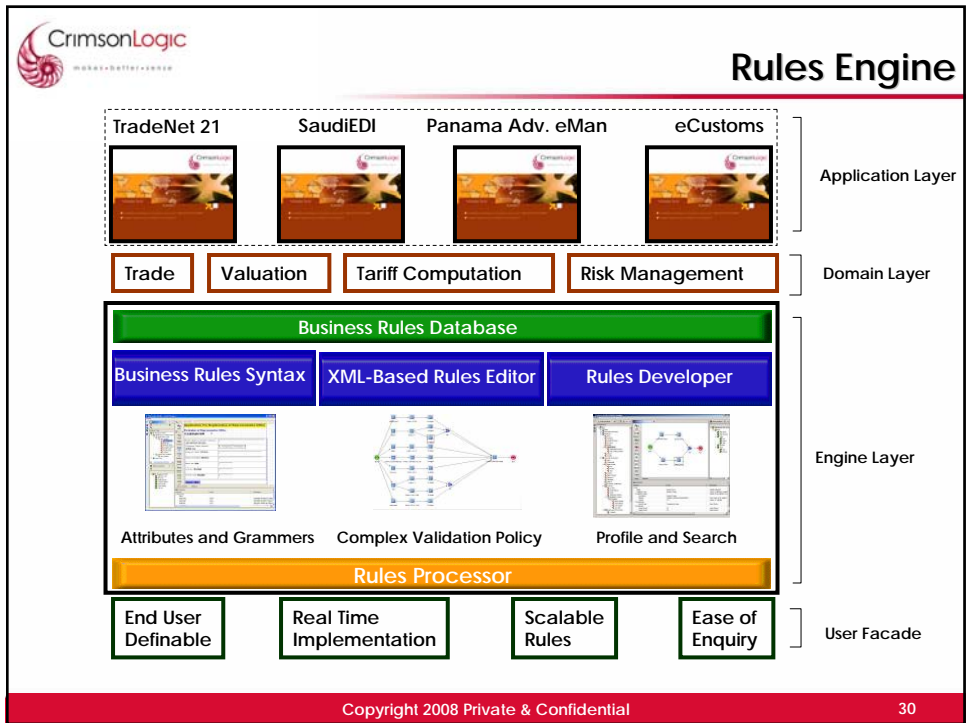
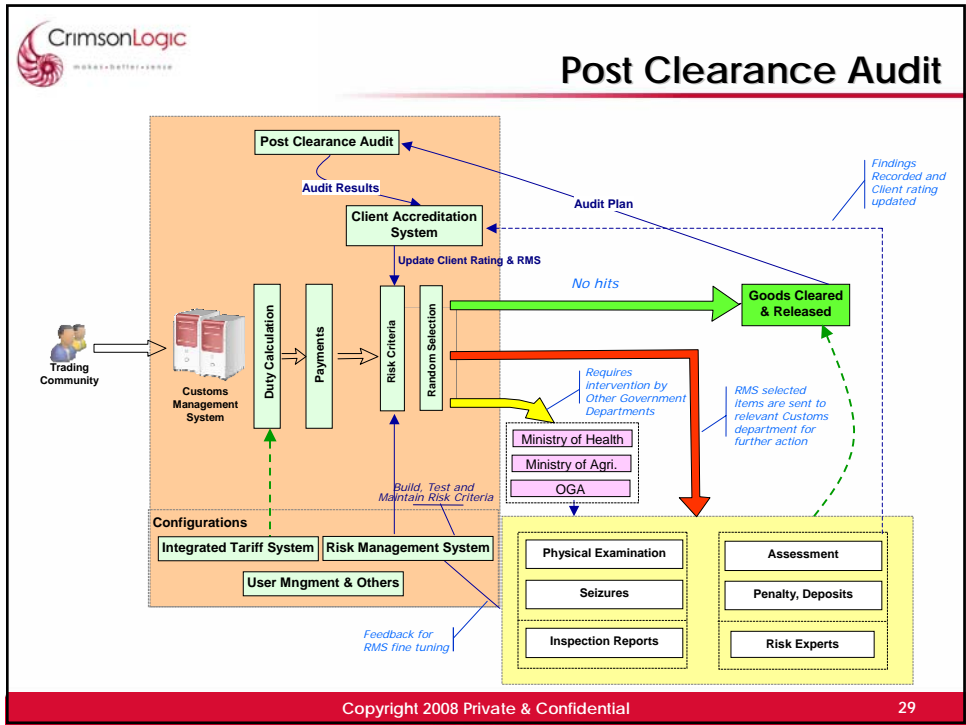


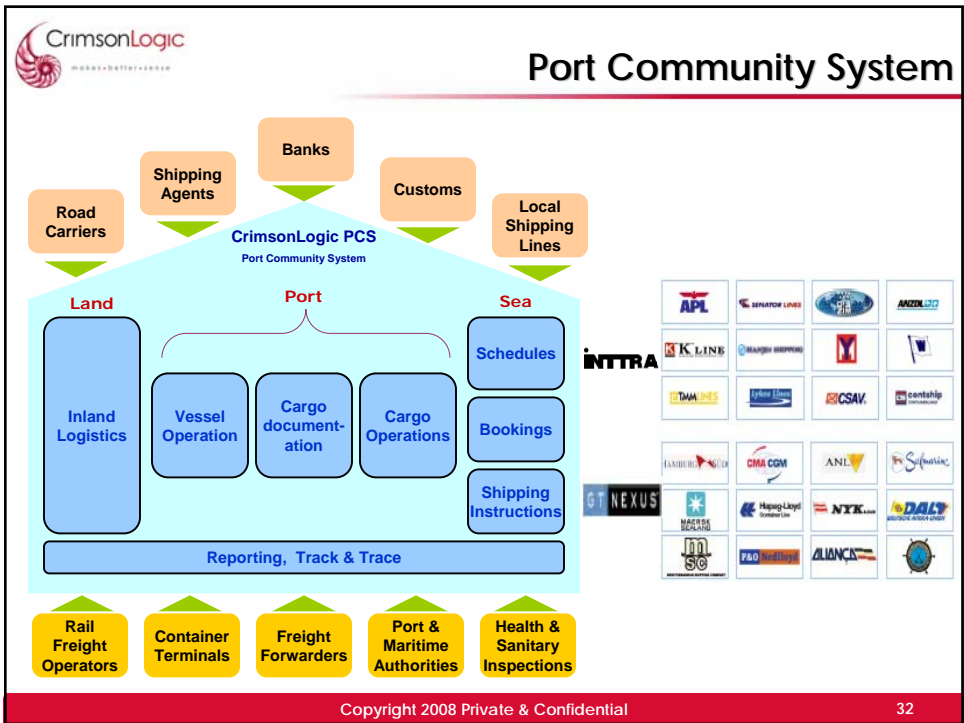
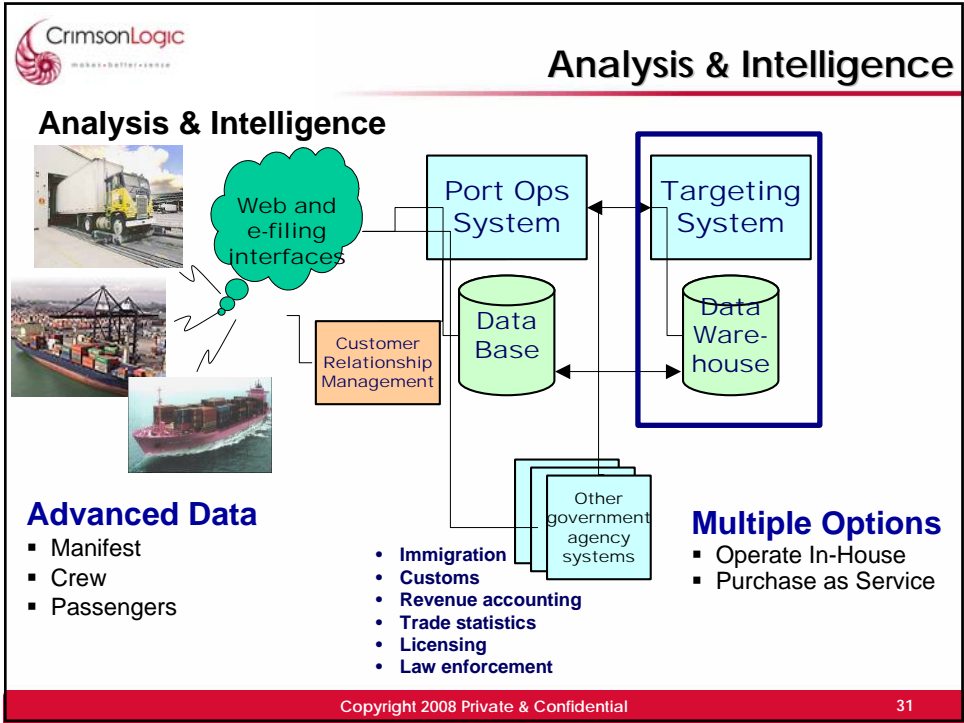
# Integrated Customs Mgt System Architecture



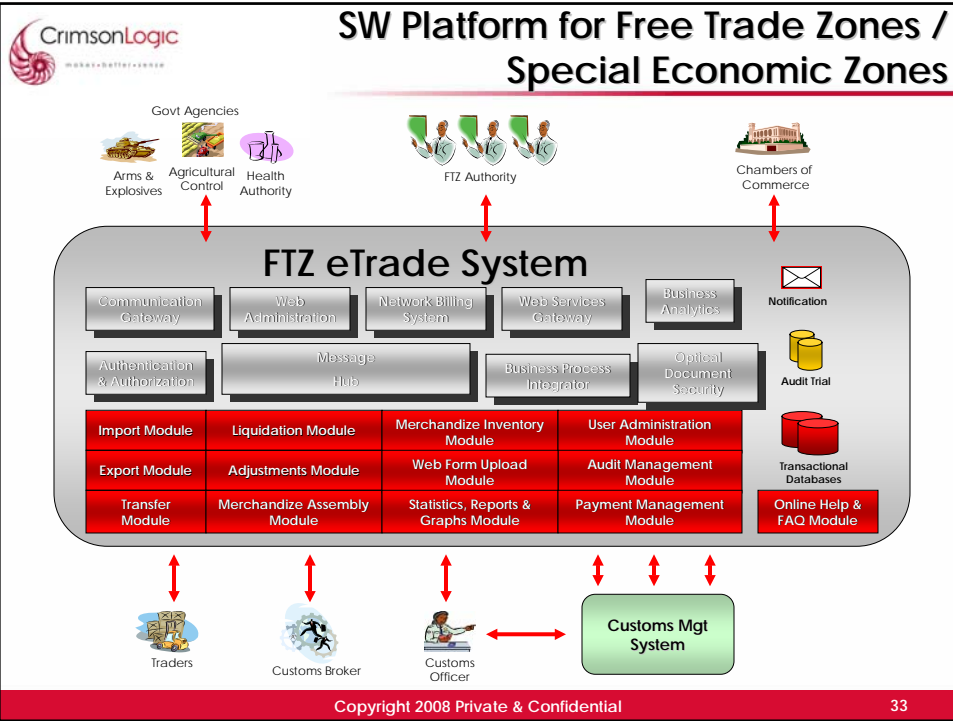
# Risk Management











### What's the Cost

	Price	Scope	Remarks
Singapore TradeNet (1989)	US\$12M	Trade Facilitation (Single Window) excludes Customs System	No Customs system
New Zealand CusMod System (1996)	NZ\$22 million <sup>[1]</sup>	Customs system only	
Korea's Automated Customs System (1992 - 1997)	~ US\$24 million <sup>[2]</sup>	Customs System only	Does not cover Nationwide Single Electronic Window
Royal Thai Customs System (1997-2000)	Baht 1.0 billion <sup>2</sup> (~US\$32M)	Customs system only	Does not cover Nationwide Single Electronic Window
Russian Customs Development Project	US\$133M <sup>2</sup>	Customs System only	Does not cover Nationwide Single Electronic Window

<sup>[1]</sup> Article "Customs paves way for one-stop border" - <http://www.stuff.co.nz/stuff/4097564a28.html>  
<sup>[2]</sup> "THE ROLE OF AUTOMATION IN TRADE FACILITATION" - OECD Trade Policy Working Paper No. 22, 2005

Copyright 2008 Private & Confidential 34



Thank you very much for your attention

email: [jonathankoh@crimsonlogic.com](mailto:jonathankoh@crimsonlogic.com)  
mobile : +65 9835 5198

All rights reserved. 'CrimsonLogic' and the Shell Device are trade marks of CrimsonLogicPte Ltd (Regn No: 198800784N ). All information contained in this presentation is disclosed to you on the basis of a prospective business relationship and is proprietary to CrimsonLogic Pte Ltd and may not be used, disclosed or reproduced without the prior written consent of CrimsonLogic.

Copyright 2008 Private & Confidential

35