

# **Progress in Trade Facilitation and Corridor Performance Measurement and Monitoring**

**8th Transport Sector Coordinating Committee Meeting**  
24-25 June 2009  
Ulaan Baatar, Mongolia

**Mr. Ying Qian**  
East Asia Regional Department, Asian Development Bank



# CAREC Trade Facilitation

- Customs Cooperation
  - Initiatives in areas of Joint Customs Control and Regional Transit
  - Simplification of Procedures, ICT and Data Exchange, and Risk Management
- Integrated Trade Facilitation
  - Corridor Performance Measurement Monitoring (CPMM)
  - National and Regional Joint Transport and Trade Facilitation Committees (NJC/RJC)
  - Single Window (SW) Development
  - Trade Logistics Development
  - Training Needs Assessment and Capacity Building

# Need for CPMM

- Transport and Trade Facilitation Strategy (TTFS) mandated that economic corridors' performance be measured and monitored periodically to:
  - Ascertain current situation along the links and nodes of each CAREC corridor
  - Identify bottlenecks
  - Determine courses of action to address bottlenecks, and
  - Assess the impact of regional cooperation initiatives
- Workshop in Guangzhou, Feb 2009

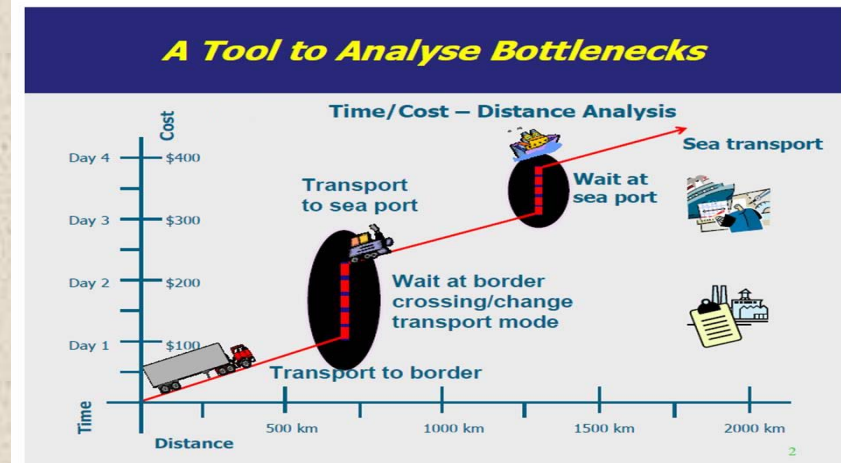
# Time-Cost Distance

Please fill up and return to your respective Association upon completion of the trip.

Place of Origin: \_\_\_\_\_ Fixed Destination: \_\_\_\_\_ Route Plan: \_\_\_\_\_

Goods: \_\_\_\_\_ Gross weight: \_\_\_\_\_ Odometer Reading - S: \_\_\_\_\_ Odometer Reading E: \_\_\_\_\_ Date start: \_\_\_\_\_ Time start: \_\_\_\_\_

Step No.	1	2	3	4	5	6	7	8	9	10	11	12
Transport												
Distance from previous step (km)												
Refueling Cost												
Duration of travel from previous step to this step (no. of hours)												
Reason for Stop (circle the one)												
Activities												
Health/Quarantine Inspection												
Phytosanitary Inspection												
Veterinary Inspection												
Border Security / Control												
Wait / Immigration												
Customs Inspection												
Duration												
Waiting/Queueing												
Loading / Unloading												
Overnight Stay/Rest												
Meal												
Escort / Escorter												
Weight/Standard Inspection												
Police Checkpoint/Stop												
Vehicle Registration												
Payment for replacement												
Others 1												
Others 2												
Others 3												
Others 4												
Others 5												
Others 6												
Others 7												



Microsoft Excel - revised template ver 4.0 18 Jun

File Edit View Insert Format Tools Data Window Help Ablebits.com

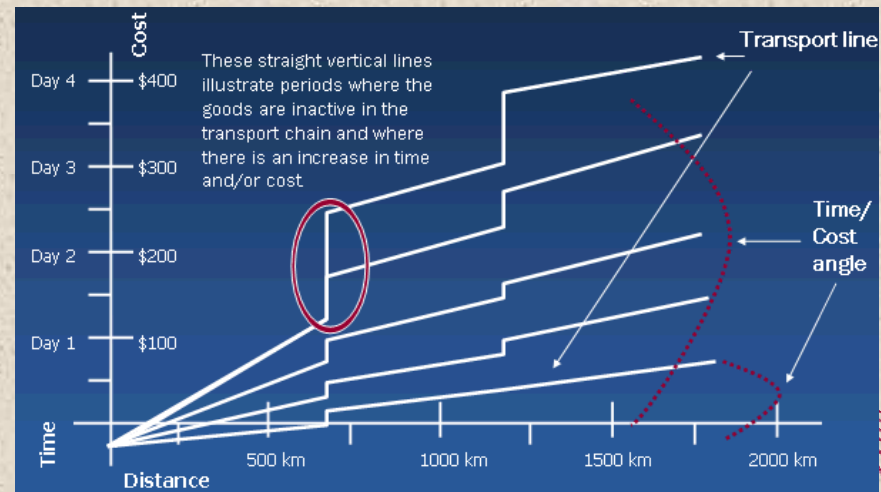
File Edit View Insert Format Tools Data Window Help Type a question for help

Security... 05% deskPDF

O3

	A	B	C	D	E	F	G	H	I	J	K	L	M	N	O	P	Q	R	S	T	U	V	W	X	Y	Z	AA	AB	AC	AD	AE	AF	AG	
1																																		
2																																		
3	Place of stop	Name of city																																
4		Name of country																																
5	Mode of transport	CAREC Corridor																																
6	Distance from previous stop (km)																																	
7	Duration of travel (hours)																																	
8	Transit cost (US\$)																																	
9	Reason for stop																																	
10		Activities	Duration	Cost (USD)	Diff% (a?)	Duration	Cost (USD)	Diff% (a?)	Duration	Cost (USD)	Diff% (a?)	Duration	Cost (USD)	Diff% (a?)	Duration	Cost (USD)	Diff% (a?)	Duration	Cost (USD)	Diff% (a?)	Duration	Cost (USD)	Diff% (a?)	Duration	Cost (USD)	Diff% (a?)	Duration	Cost (USD)	Diff% (a?)	Duration	Cost (USD)	Diff% (a?)		
11		Health Quarantine	hrs	mins		hrs	mins		hrs	mins		hrs	mins		hrs	mins		hrs	mins		hrs	mins		hrs	mins		hrs	mins		hrs	mins		hrs	mins
12		Phytosanitary	hrs	mins		hrs	mins		hrs	mins		hrs	mins		hrs	mins		hrs	mins		hrs	mins		hrs	mins		hrs	mins		hrs	mins		hrs	mins
13		Veterinary inspection	hrs	mins		hrs	mins		hrs	mins		hrs	mins		hrs	mins		hrs	mins		hrs	mins		hrs	mins		hrs	mins		hrs	mins		hrs	mins
14		Border security / control	hrs	mins		hrs	mins		hrs	mins		hrs	mins		hrs	mins		hrs	mins		hrs	mins		hrs	mins		hrs	mins		hrs	mins		hrs	mins
15		Visa / Immigration	hrs	mins		hrs	mins		hrs	mins		hrs	mins		hrs	mins		hrs	mins		hrs	mins		hrs	mins		hrs	mins		hrs	mins		hrs	mins
16		Customs clearance	hrs	mins		hrs	mins		hrs	mins		hrs	mins		hrs	mins		hrs	mins		hrs	mins		hrs	mins		hrs	mins		hrs	mins		hrs	mins
17		Customs	hrs	mins		hrs	mins		hrs	mins		hrs	mins		hrs	mins		hrs	mins		hrs	mins		hrs	mins		hrs	mins		hrs	mins		hrs	mins
18		Waiting queue	hrs	mins		hrs	mins		hrs	mins		hrs	mins		hrs	mins		hrs	mins		hrs	mins		hrs	mins		hrs	mins		hrs	mins		hrs	mins
19		Loading / unloading	hrs	mins		hrs	mins		hrs	mins		hrs	mins		hrs	mins		hrs	mins		hrs	mins		hrs	mins		hrs	mins		hrs	mins		hrs	mins
20		Overnight stay/Rest	hrs	mins		hrs	mins		hrs	mins		hrs	mins		hrs	mins		hrs	mins		hrs	mins		hrs	mins		hrs	mins		hrs	mins		hrs	mins
21		Meal	hrs	mins		hrs	mins		hrs	mins		hrs	mins		hrs	mins		hrs	mins		hrs	mins		hrs	mins		hrs	mins		hrs	mins		hrs	mins
22		Escort / Escorter	hrs	mins		hrs	mins		hrs	mins		hrs	mins		hrs	mins		hrs	mins		hrs	mins		hrs	mins		hrs	mins		hrs	mins		hrs	mins
23		Weight/standard inspection	hrs	mins		hrs	mins		hrs	mins		hrs	mins		hrs	mins		hrs	mins		hrs	mins		hrs	mins		hrs	mins		hrs	mins		hrs	mins
24		Police checkpoint / stop	hrs	mins		hrs	mins		hrs	mins		hrs	mins		hrs	mins		hrs	mins		hrs	mins		hrs	mins		hrs	mins		hrs	mins		hrs	mins
25		Vehicle registration	hrs	mins		hrs	mins		hrs	mins		hrs	mins		hrs	mins		hrs	mins		hrs	mins		hrs	mins		hrs	mins		hrs	mins		hrs	mins
26		Payment for replacement	hrs	mins		hrs	mins		hrs	mins		hrs	mins		hrs	mins		hrs	mins		hrs	mins		hrs	mins		hrs	mins		hrs	mins		hrs	mins
27		Others 1	hrs	mins		hrs	mins		hrs	mins		hrs	mins		hrs	mins		hrs	mins		hrs	mins		hrs	mins		hrs	mins		hrs	mins		hrs	mins
28		Others 2	hrs	mins		hrs	mins		hrs	mins		hrs	mins		hrs	mins		hrs	mins		hrs	mins		hrs	mins		hrs	mins		hrs	mins		hrs	mins
29		Others 3	hrs	mins		hrs	mins		hrs	mins		hrs	mins		hrs	mins		hrs	mins		hrs	mins		hrs	mins		hrs	mins		hrs	mins		hrs	mins
30		Others 4	hrs	mins		hrs	mins		hrs	mins		hrs	mins		hrs	mins		hrs	mins		hrs	mins		hrs	mins		hrs	mins		hrs	mins		hrs	mins
31		Others 5	hrs	mins		hrs	mins		hrs	mins		hrs	mins		hrs	mins		hrs	mins		hrs	mins		hrs	mins		hrs	mins		hrs	mins		hrs	mins
32		Others 6	hrs	mins		hrs	mins		hrs	mins		hrs	mins		hrs	mins		hrs	mins		hrs	mins		hrs	mins		hrs	mins		hrs	mins		hrs	mins
33		Others 7	hrs	mins		hrs	mins		hrs	mins		hrs	mins		hrs	mins		hrs	mins		hrs	mins		hrs	mins		hrs	mins		hrs	mins		hrs	mins

Part A (for CAs) PART B - From Drivers Form / Graph Time-Distance / Graph Cost-Distance / Graph All in One / Data - Ave Speed / Graph Average



# Collection and Analysis

- Institutional Arrangement

- MOU with partner freight forwarders associations (FFAs) and road carrier associations (RCAs)
- Frequency of Collection
  - Average 30 TCD/Partner/month
  - 15 observations to be allocated on designated sub-branches of all CAREC Corridors, e.g., 1b, 2a, 3b, 4b, 5, 6c
  - Partner association to decide how to split between road and rail depending on relative importance among corridors

- Submission, analyses and reporting

- Partner associations submit data in TCD template to CAREC Secretariat
- Data analysis at ADB HQ, ADB to build a database to support analysis and reporting
- Quarterly reports on CPMM results and in-depth report submitted to CAREC SOM
- Partner associations encouraged to analyze the data and compare their results with the Secretariat
- Reports to be provided to partner associations and NJCs/ RJs for review

# Partners Associations

- 12 Partner Associations
  - Association of Afghanistan Freight Forwarders Companies
  - Azerbaijan International Road Carriers Association
  - Kazakhstan Freight Forwarders Association
  - Kyrgyz Freight Operators Association
  - National Road Transport Association of Mongolia
  - Mongolia National Chamber of Commerce and Industry
  - China International Freight Forwarders Association
  - Inner Mongolia Autonomous Region Logistics Association
  - Xinjiang Uygur Autonomous Region Freight Forwarders Association
  - Association of International Automobile Carriers of Tajikistan
  - Association of International Road Carriers of Uzbekistan
  - Business Logistics Development Association of Uzbekistan
- Proposal to establish the CAREC Federation of Carriers and Forwarders Associations (CFCFA)
- Cooperation with International Road Union (IRU)

# CPMM Data Description

## TCD Submission by Association by Month

Association	Month					Total
	January	February	March	April	May	
AZE	0	0	0	6	0	6
CIFA	4	18	15	3	0	40
IMAR	0	0	10	17	0	27
KAZ	0	0	19	15	1	35
KGZ	9	2	0	13	0	24
MON	0	0	0	30	30	60
UZB	0	0	13	25	0	38
XUAR	0	0	0	5	0	5
<b>Total</b>	<b>13</b>	<b>20</b>	<b>57</b>	<b>114</b>	<b>31</b>	<b>235</b>

# CPMM Data Description

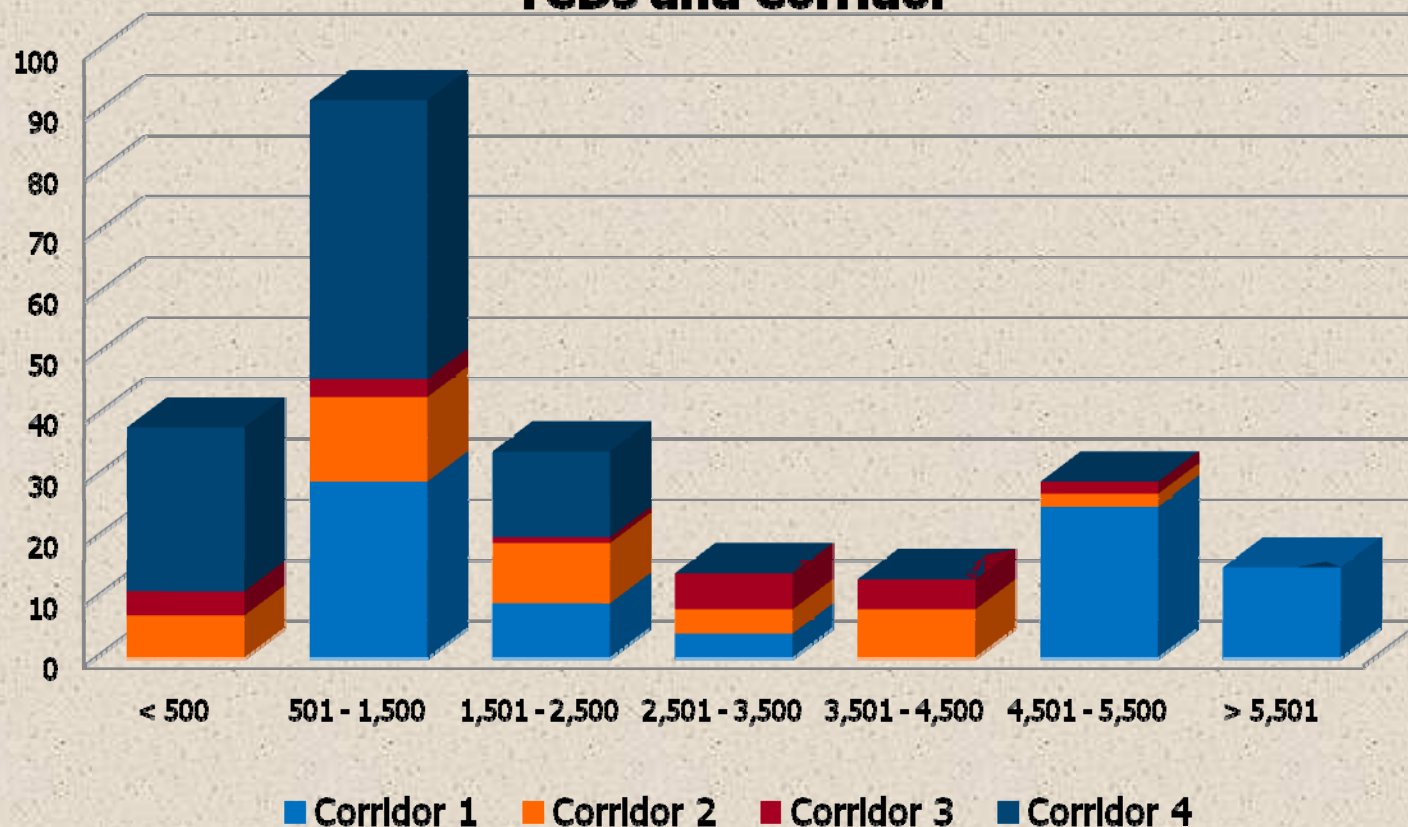
## Number of TCDs Submitted by Association by Corridor

Association	Corridor				Total
	1	2	3	4	
AZE	0	6	0	0	6
CIFA	40	0	0	0	40
IMAR	0	0	0	27	27
KAZ	33	2	0	0	35
KGZ	9	10	5	0	24
MON	0	0	0	60	60
UZB	0	22	16	0	38
XUAR	0	5	0	0	5
<b>Total</b>	<b>82</b>	<b>45</b>	<b>21</b>	<b>87</b>	<b>235</b>



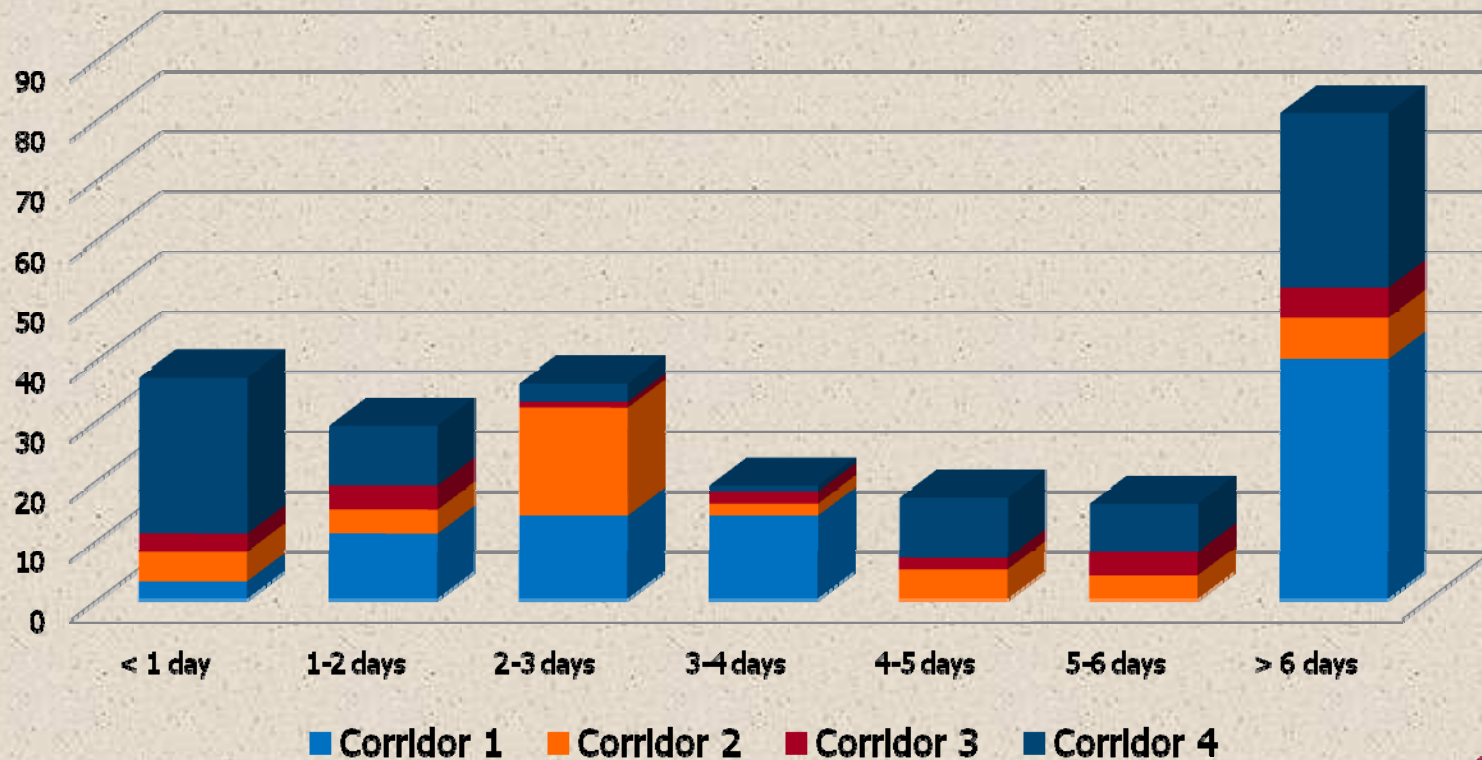
# CPMM Data Description

## Distribution of Distance Travelled by Number of TCDs and Corridor



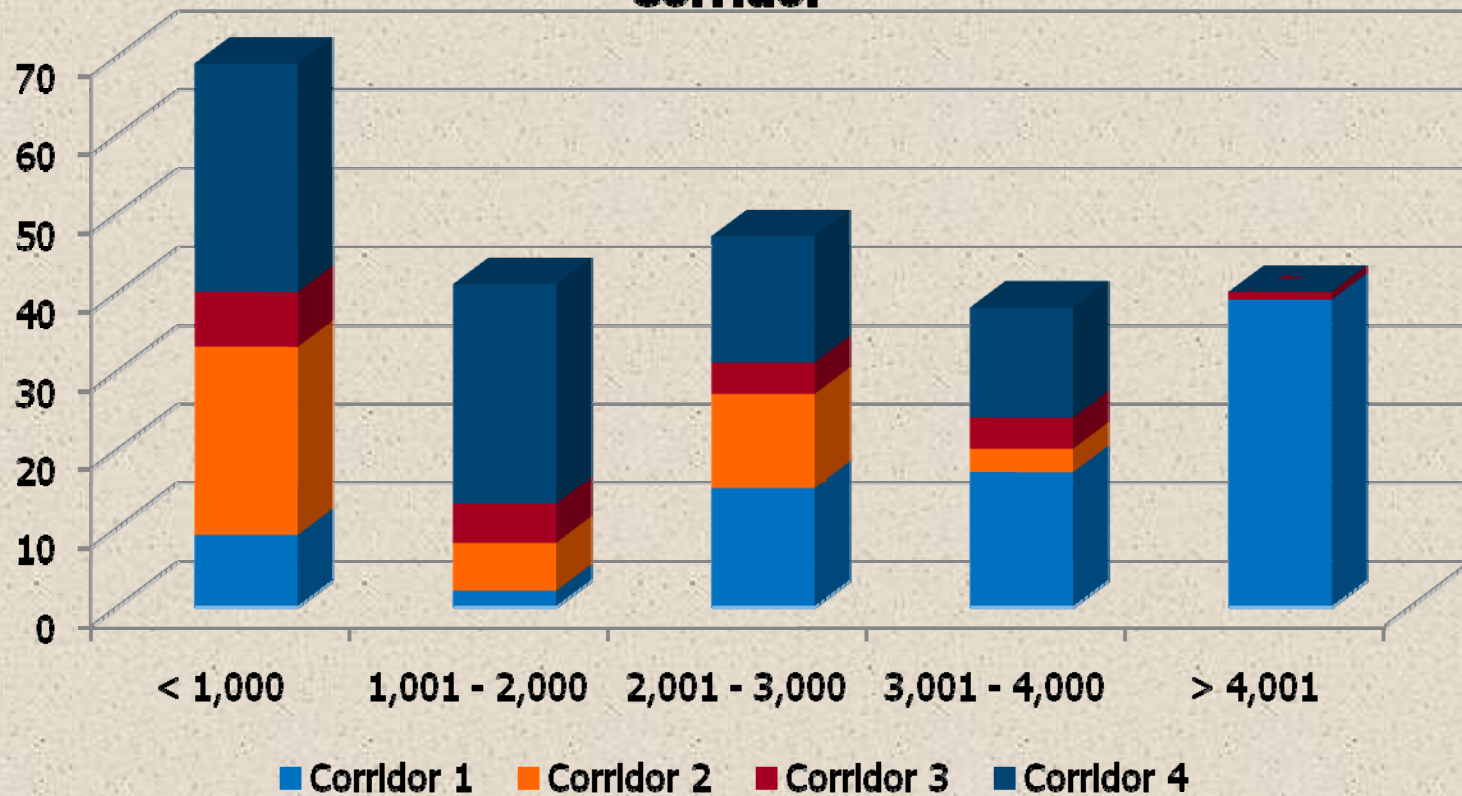
# CPMM Data Description

## Distribution of Travel Duration by Number of TCDs and by Corridor



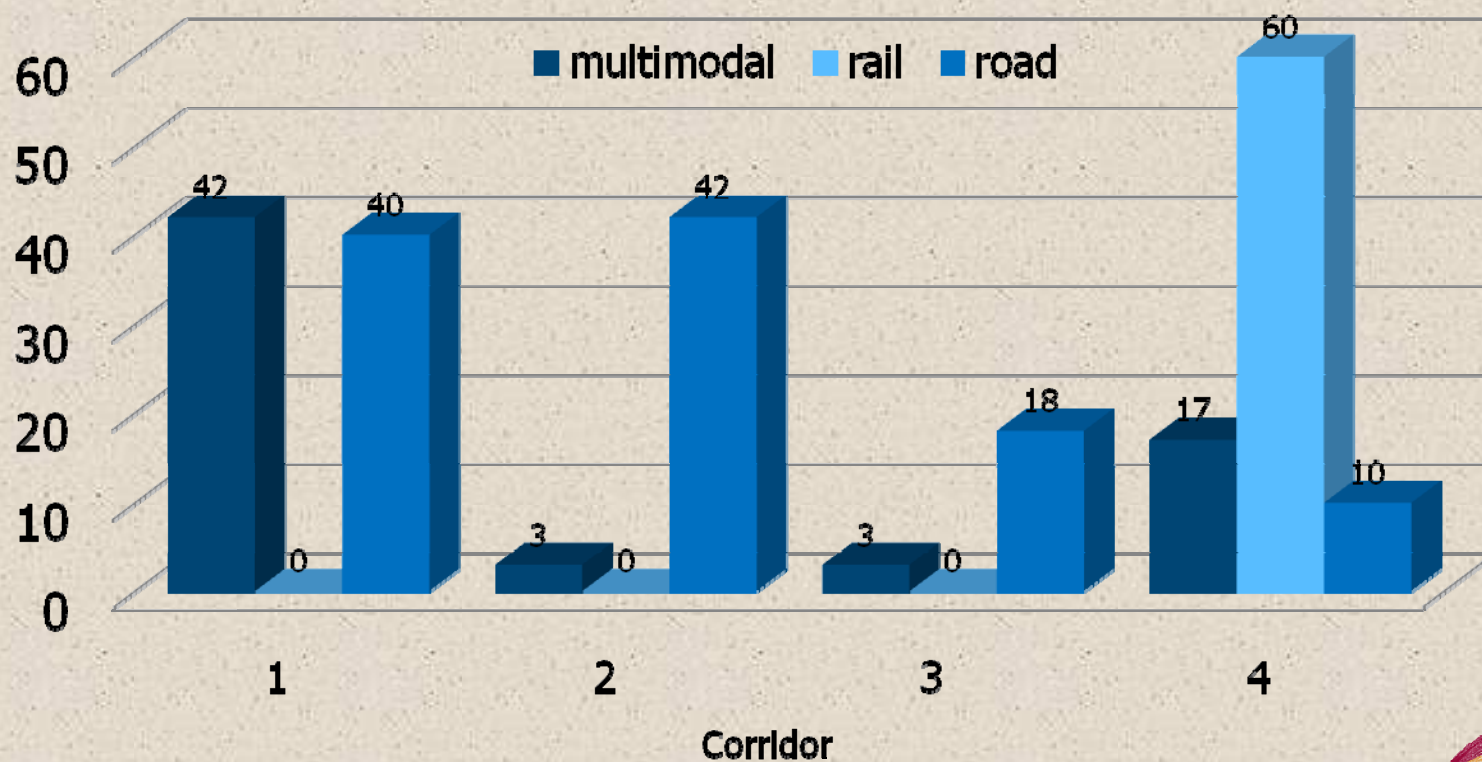
# CPMM Data Description

## Distribution of Overall Cost by Number of TCDs and Corridor



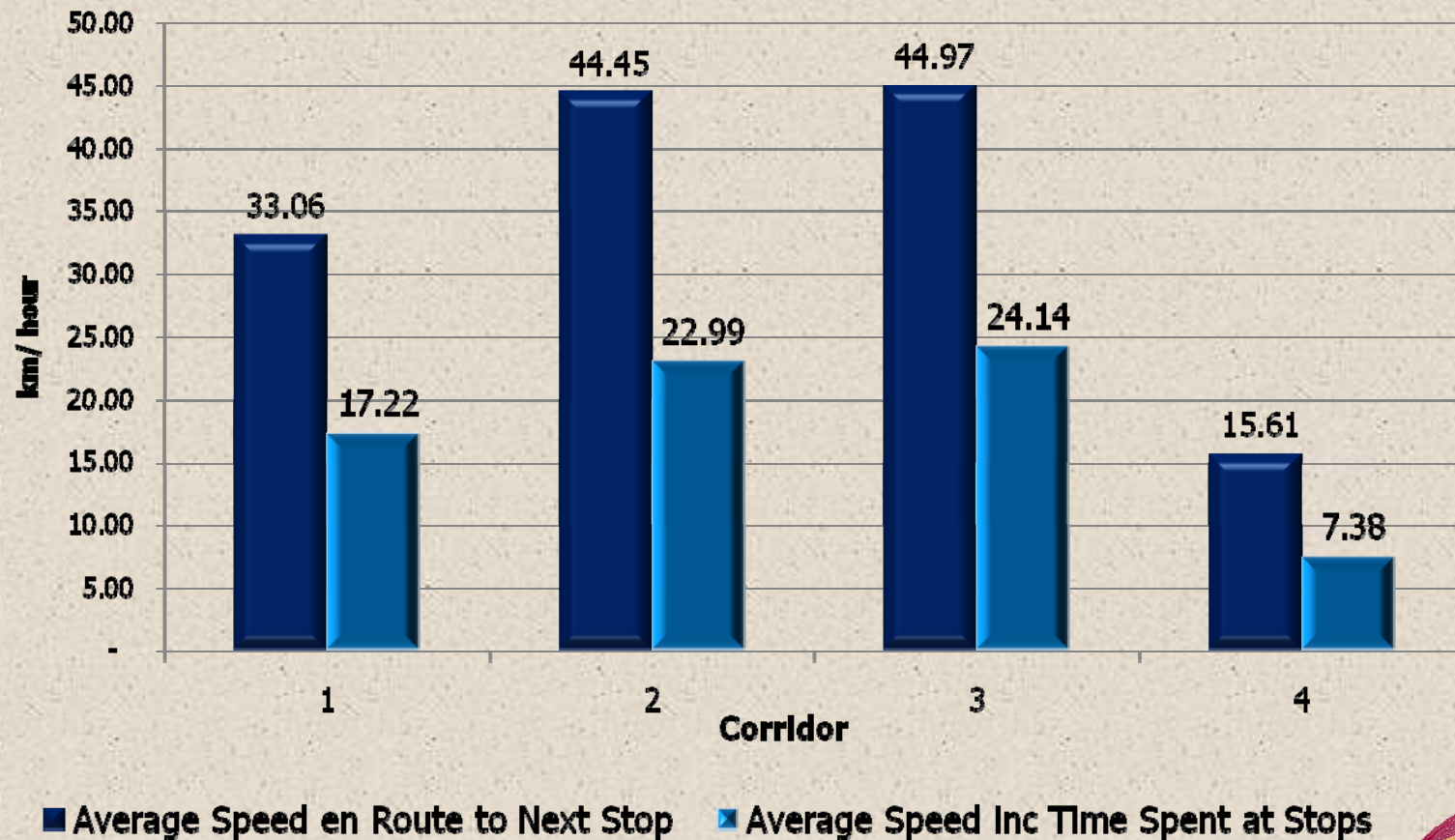
# CPMM Data Description

## Number of TCDs by Mode of Transport and by Corridor



# CPMM Data Description

## Average speed per corridor (km/h)



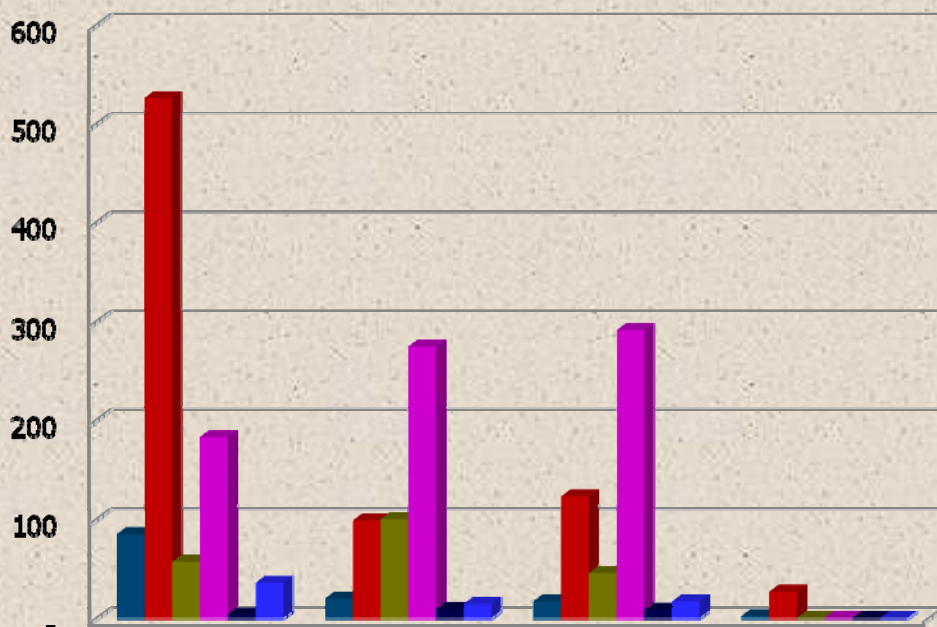
# CPMM Data Description

## Average speed by transport mode and by CAREC corridor

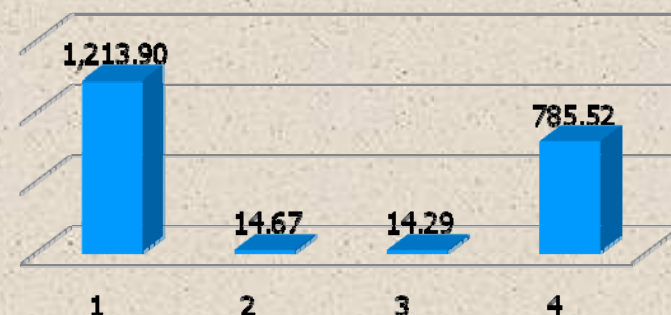
Corridor	Transport Mode	Ave Speed en Route to next stop			Ave speed inc time spent at stops		
		Mean	Max	Min	Mean	Max	Min
1	Multimodal	16.43	58.13	9.50	12.35	20.84	8.05
	Road	50.52	64.56	39.87	22.33	31.87	2.65
	Total	33.06	64.56	9.50	17.22	31.87	2.65
2	Multimodal	32.76	61.24	17.78	15.96	27.09	10.16
	Road	45.28	87.55	15.22	23.49	62.17	3.86
	Total	44.45	87.55	15.22	22.99	62.17	3.86
3	Multimodal	19.01	20.41	18.26	12.67	15.77	10.21
	Road	49.30	63.47	35.11	26.05	39.47	10.59
	Total	44.97	63.47	18.26	24.14	39.47	10.21
4	Rail	18.37	40.59	8.46	10.45	29.33	4.26
	Road	1.72	2.00	1.54	0.95	1.00	0.83
	Total	15.61	40.59	1.00	7.38	29.33	0.27

# CPMM Data Description

## Mean Time Spent for Selected Activities by Corridor (minutes)



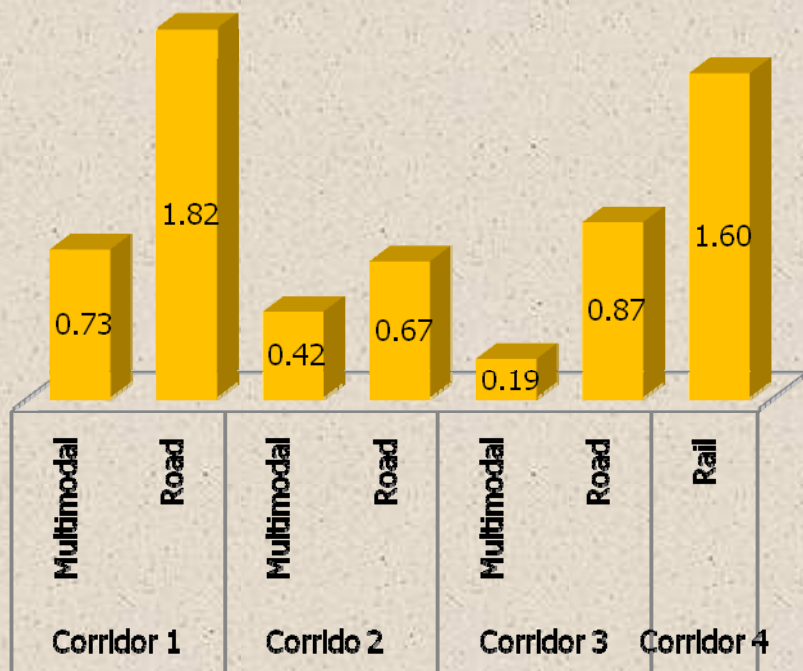
## Mean Waiting/ Delay Time by Corridor (minutes)



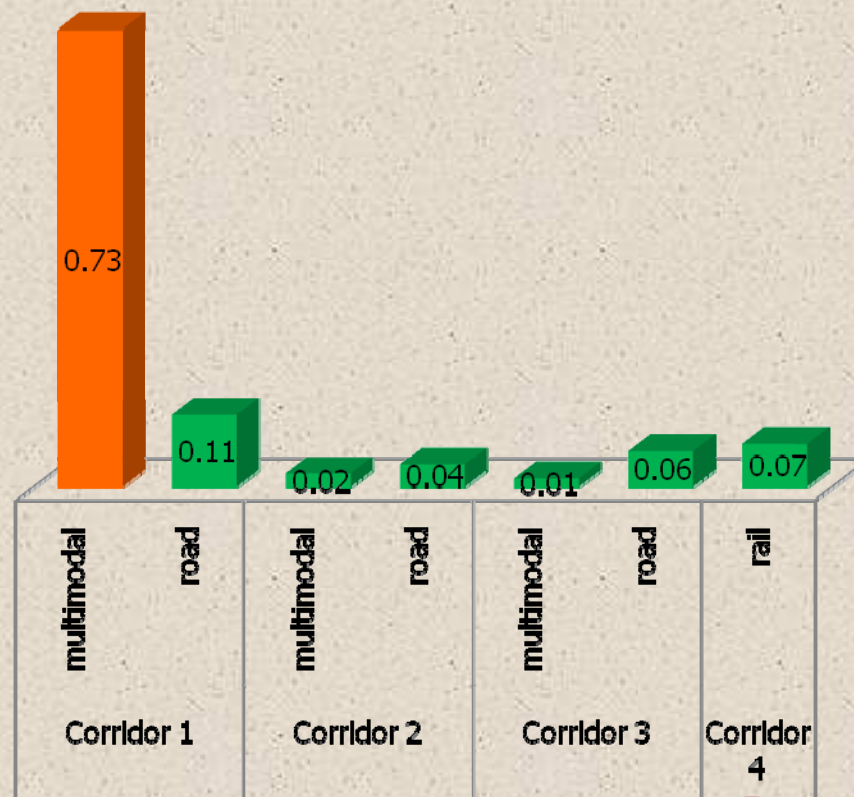
	1	2	3	4
Border Control	84.88	20.00	17.14	2.07
Customs Control	526.10	98.67	122.86	26.90
Meals	57.07	100.00	45.71	-
Rest	182.93	274.67	291.43	-
Police checkpoint	3.66	9.33	8.57	-
Fuel	35.85	14.67	17.14	-

# CPMM Data Description

## Total cost per kilometer



## Total cost per ton-km

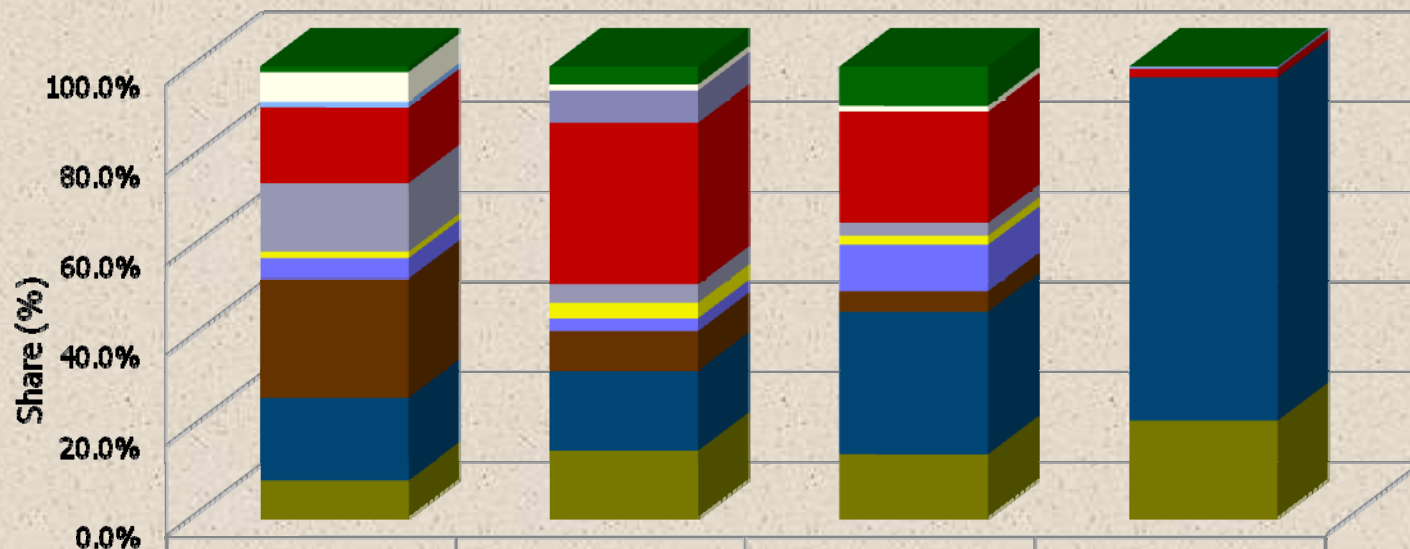


\* The unit for multimodal transport under Corridor 1 is cost / TEU-km.



# CPMM Data Description

## Share of cost of activities to total cost of activities



	1	2	3	4
Border control	1.3%	4.0%	8.7%	0.0%
Weight inspection	6.5%	1.3%	1.3%	0.0%
Veterinary	1.3%	0.0%	0.0%	0.2%
Vehicle registration	0.0%	7.1%	0.0%	0.3%
Fuel	16.8%	35.9%	24.7%	1.8%
Police checkpoint	15.2%	4.1%	2.9%	0.0%
Meals	1.4%	3.5%	2.0%	0.0%
Health / sanitary	4.6%	2.8%	10.4%	0.0%
Documentation / permits	26.4%	8.8%	4.6%	0.0%
Customs	18.3%	17.7%	31.5%	76.2%
Others	8.2%	14.8%	14.0%	21.5%

# Data Analysis

## Correlation of Cost and Macroeconomic Indicators

Macroeconomic Indicators	Cost /tkm
Logistics Performance Index	-0.800
Merchandise trade 2008	-0.223
Trade (% GDP) 2007	-0.415
Ease of doing business index 2007	-0.563

# Milestones and Plans

Activity	Timetable
<ul style="list-style-type: none"> <li>• Piloting of TCD methodology</li> </ul>	January 2009
<ul style="list-style-type: none"> <li>• Organizational Workshop</li> </ul>	February 2009 in Guangzhou, PRC
<ul style="list-style-type: none"> <li>• MOUs between ADB and each partner association               <ul style="list-style-type: none"> <li>– MOU defined roles and responsibilities for both parties</li> <li>– Will cover 1 year of CPMM activities (with option to renew for another year)</li> </ul> </li> </ul>	Signed in February 2009 in Guangzhou, PRC
<ul style="list-style-type: none"> <li>• Advance payment facility has been setup by ADB to compensate the operational costs of partner associations</li> </ul>	April 2009
<ul style="list-style-type: none"> <li>• Collection of driver's forms and submission of TCD templates by partner associations</li> </ul>	ongoing
<ul style="list-style-type: none"> <li>• Creation of operations manual for drivers and partner associations</li> </ul>	ongoing
<ul style="list-style-type: none"> <li>• Training of trainers (of association staff, drivers)</li> </ul>	ongoing
<ul style="list-style-type: none"> <li>• Submissions of analytical reports</li> </ul>	From August 2009

# National Joint Committees

- **Ownership**
  - develop national joint transport and trade facilitation action plan
  - enhance skills of NJC member agencies and stakeholders to plan, implement and evaluate projects
- **Coordination**
  - coordinate public-private sector efforts to develop integrated national action plan consistent with the approved TTFS Action Plan;
  - coordinate with multi-lateral organizations to mobilize resources for investments identified in national action plan;
- **Implementation**
  - supervise and monitor implementation of CAREC transport and trade facilitation projects

# Regional Joint Committee

- **Ownership**

- Overseeing implementation of CAREC TTFS Action Plan
- Support the implementation of corresponding national action plans by sharing experiences learned and best practices
- Enhance NJCs' ownership of programs and projects
- Promote organization of regional groupings

- **Coordination**

- Coordinate with CCC, TSCC, Trade Policy Committee and with regional cooperation mechanisms such as Shanghai Cooperation Organization, European Asian Economic Cooperation and others in the implementation of the TTFS and its Action Plan;
- Promote participation and involvement of development partners, multilateral development agencies, and the private sector;

- **Implementation**

- supervise and monitor implementation of CAREC transport and trade facilitation projects

# Single Window

<b>Work Program</b>	<b>Timetable</b>
Case studies (MON, KGZ, AZE and UZB) identify road maps for SW at the national level	Ongoing - June
Workshop on international standards and best practices as well as practical issues	July
Preparation of national and regional road maps	Ongoing
Individual Project Formulation and Implementation (national and regional)	

# Trade Logistics

- Trade logistics studies for Afghanistan, Azerbaijan, Mongolia, Kazakhstan, Kyrgyz Republic, Inner Mongolia Autonomous Region and Xinjiang Uygur Automations Region of PRC, Tajikistan, and Uzbekistan are being finalized and publications will be launched at the Aug/Sep CAREC Business Development Forum in Urumqi
- CAREC Federation of Carriers and Forwarders Associations (CFCFA) will be established in Aug/Sep 2009
- A Public Information Platform for transport and trade logistics operators for CAREC region is being proposed

# Capacity Building

- Training Needs Assessment (TNA)
  - common needs for customs cooperation, integrated trade facilitation and skills development
  - creation of Regional Training Database accessible to all CAREC participating countries; and
  - Need a simple training development structure to ensure
    - \* consistency in the identification of needs,
    - \* appropriateness of content, level and quality of delivery and skills transfer.
  - Need to strengthen existing institutions
    - \* develop core curricula for particular regional centers
    - \* pairing with international centers of excellence
- Role of CAREC Institute



# Thank you



**Ying Qian**

Principal Economist (Financial Sector)  
Financial Sector, Public Management  
and Regional Cooperation Division

Tel: + 632 632 5945

Fax: + 632 636 2494

Email: [yqian@adb.org](mailto:yqian@adb.org)