



**World Customs
Organization**

Single Window Environment

Juan Diego Chavarría

Technical Officer
Procedure and Facilitation, Compliance and Facilitation
World Customs Organization

Single Window Environment

08 June 2023

Single Window Environment

UN/CEFACT Recommendation 33:

- a facility that allows parties involved in trade and transport to lodge standardized information and documents with a single entry point to fulfil all import, export, and transit-related regulatory requirements. If information is electronic, then individual data elements should only be submitted once

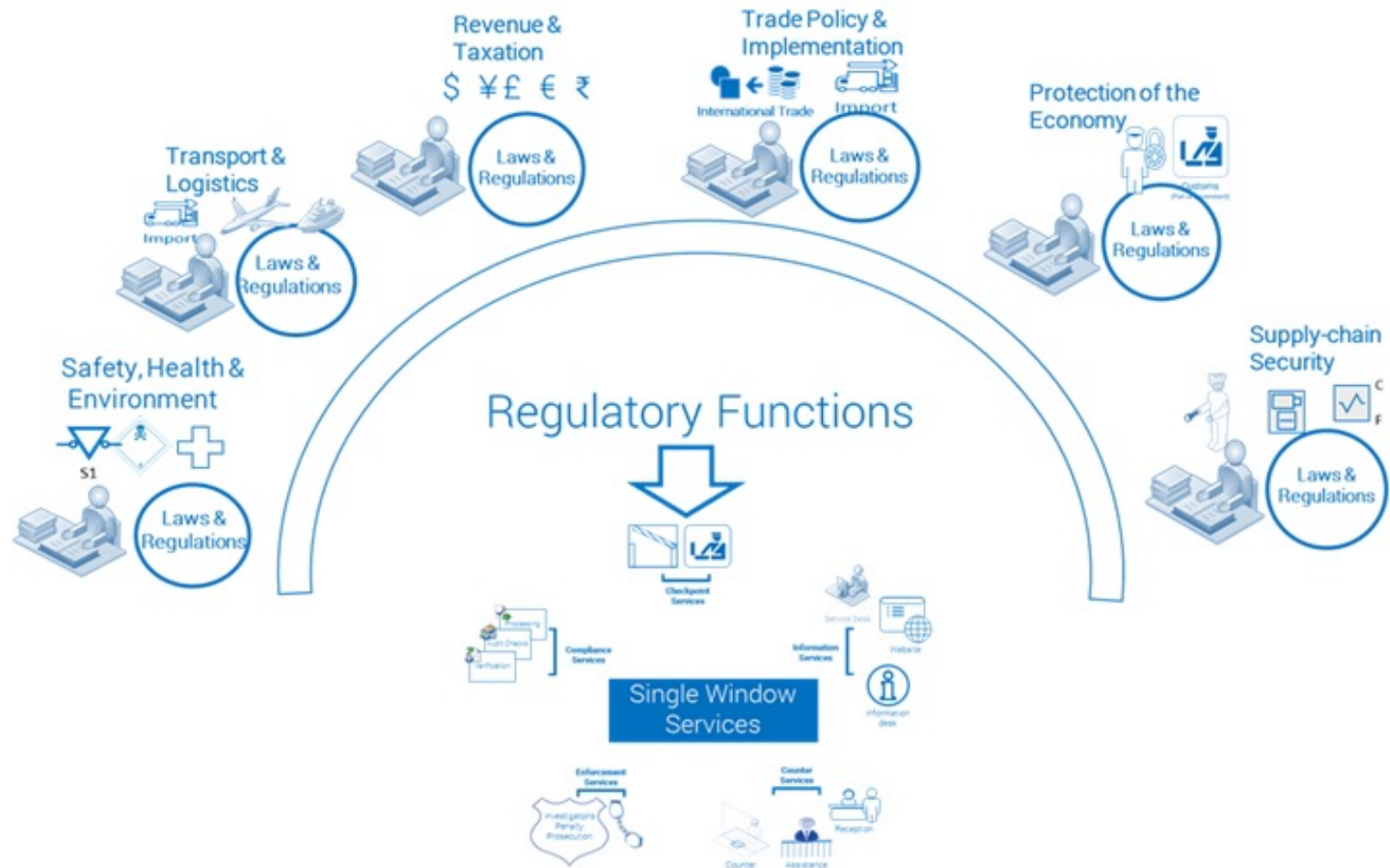
One-time submission

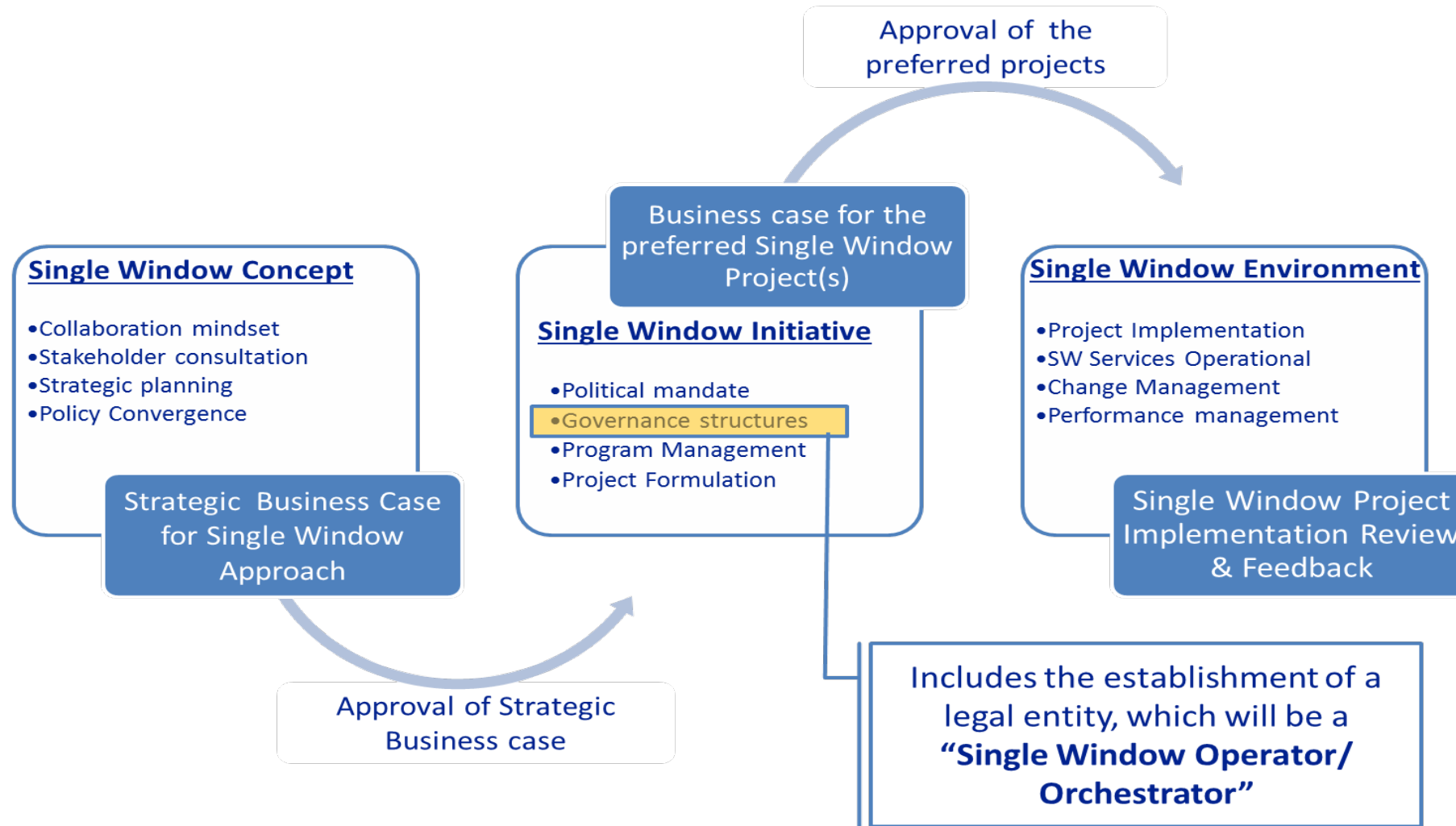
- Incremental submission of data
- Harmonized regulatory declarations
- Sharing of information amongst CBRAs
- Harmonized CBRA response

SW needs to be seen as an “**environment**” because it is not a monolithic structure, but an ecosystem of inter-dependent facilities and processes

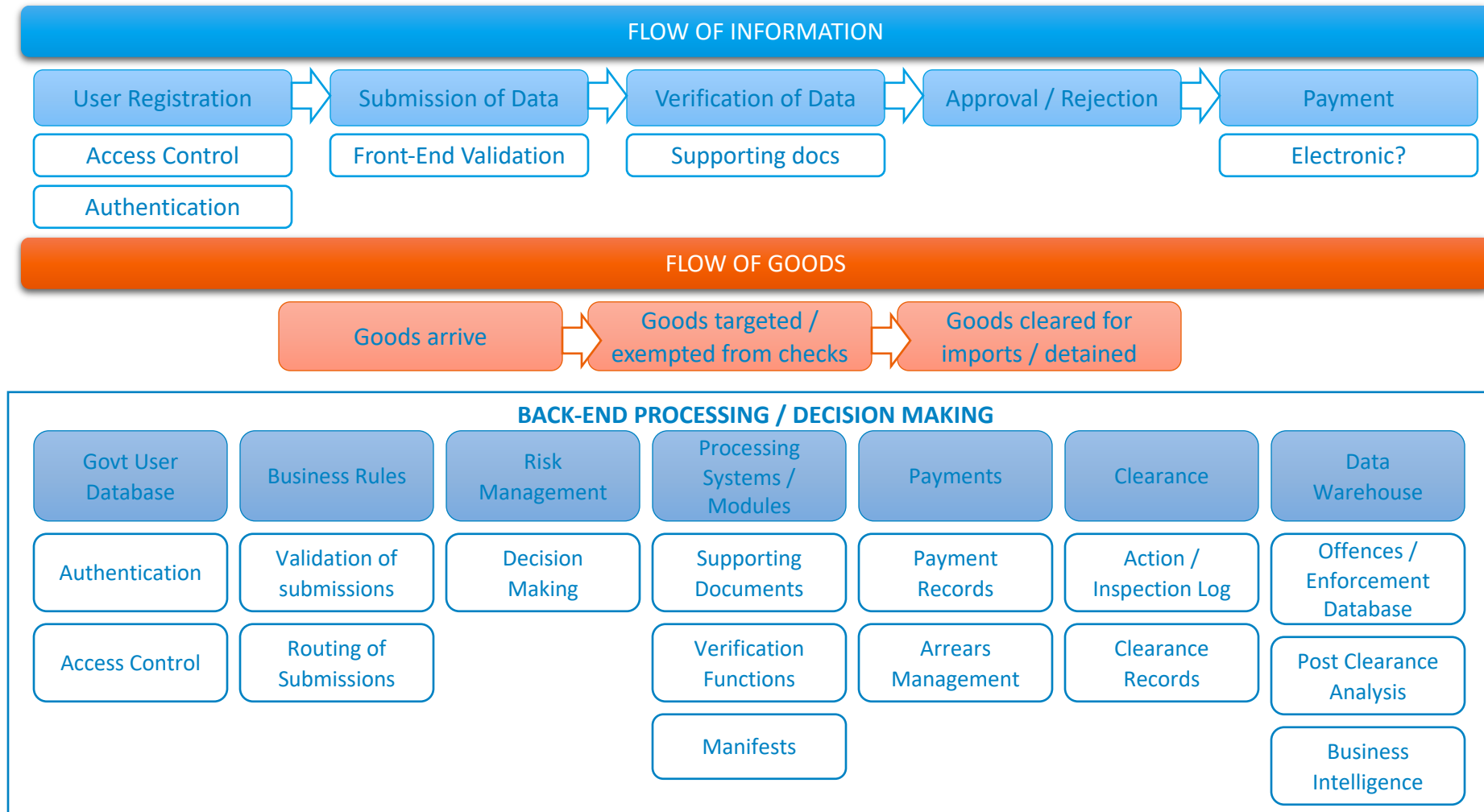
Key areas where a Single Window supports:

- revenue administration,
- trade policy compliance and administration,
- safety, health and environment,
- transportation and logistics,
- protection of the economy,
- supply-chain security





Service Interactions & Service Oriented Architecture



Single Window and Data Model

3

Data driven processes

Standardized Data Set
Universal language

2

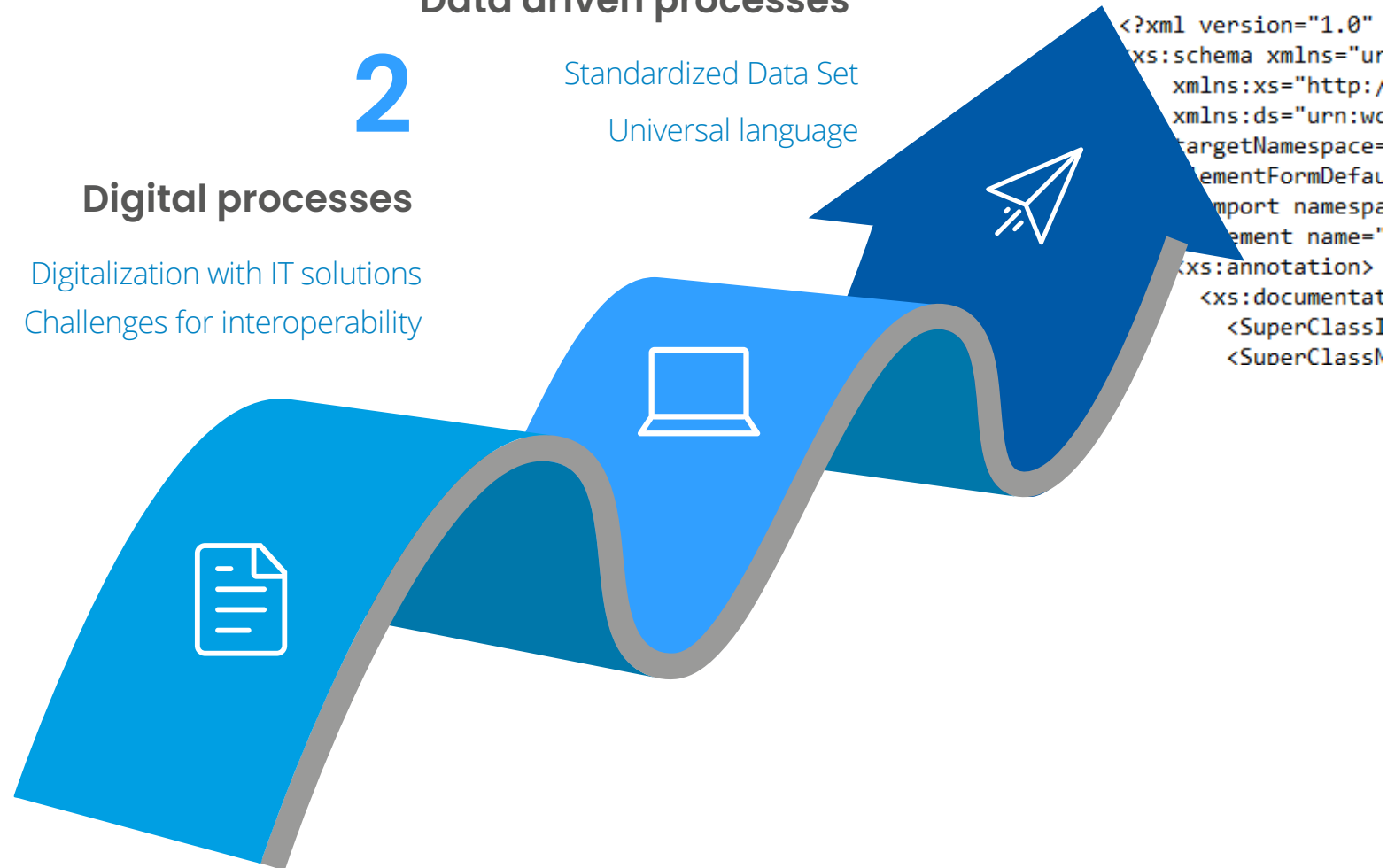
Digital processes

Digitalization with IT solutions
Challenges for interoperability

1

Paper based processes

Manual documentation
represent slow, costly and
difficult exchange of permits

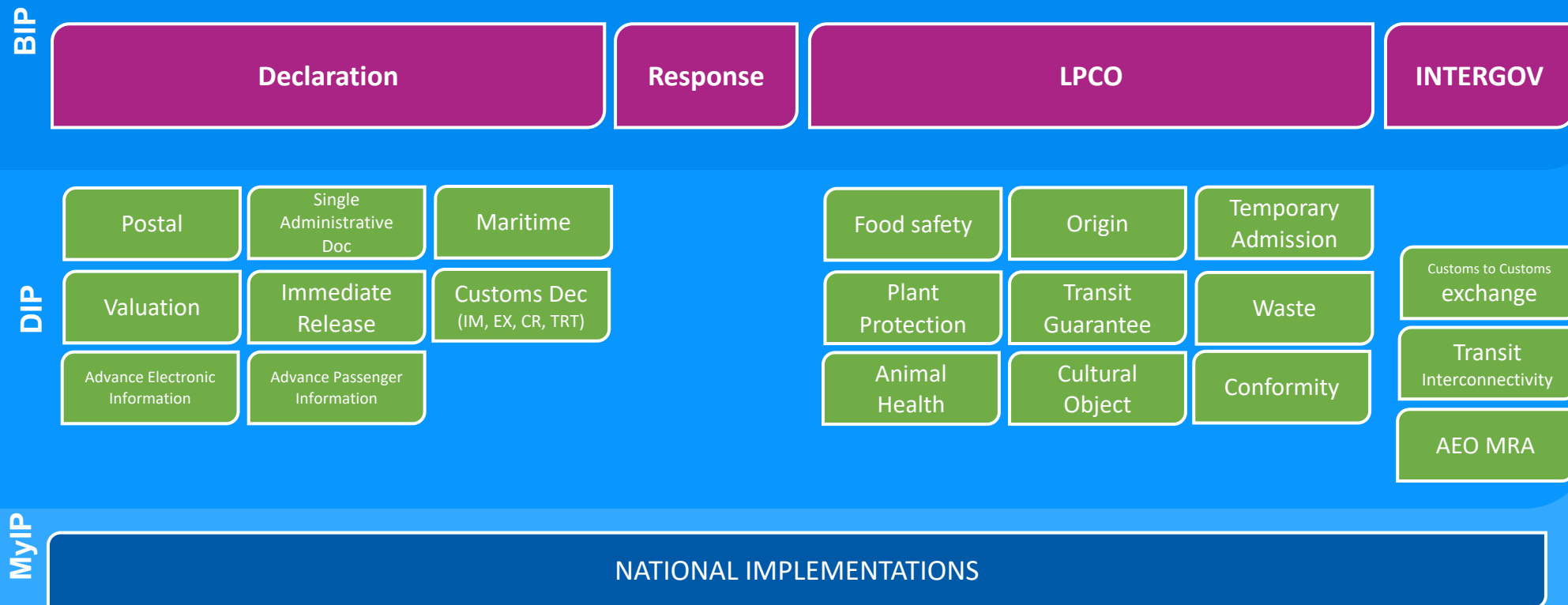


Information Packages:

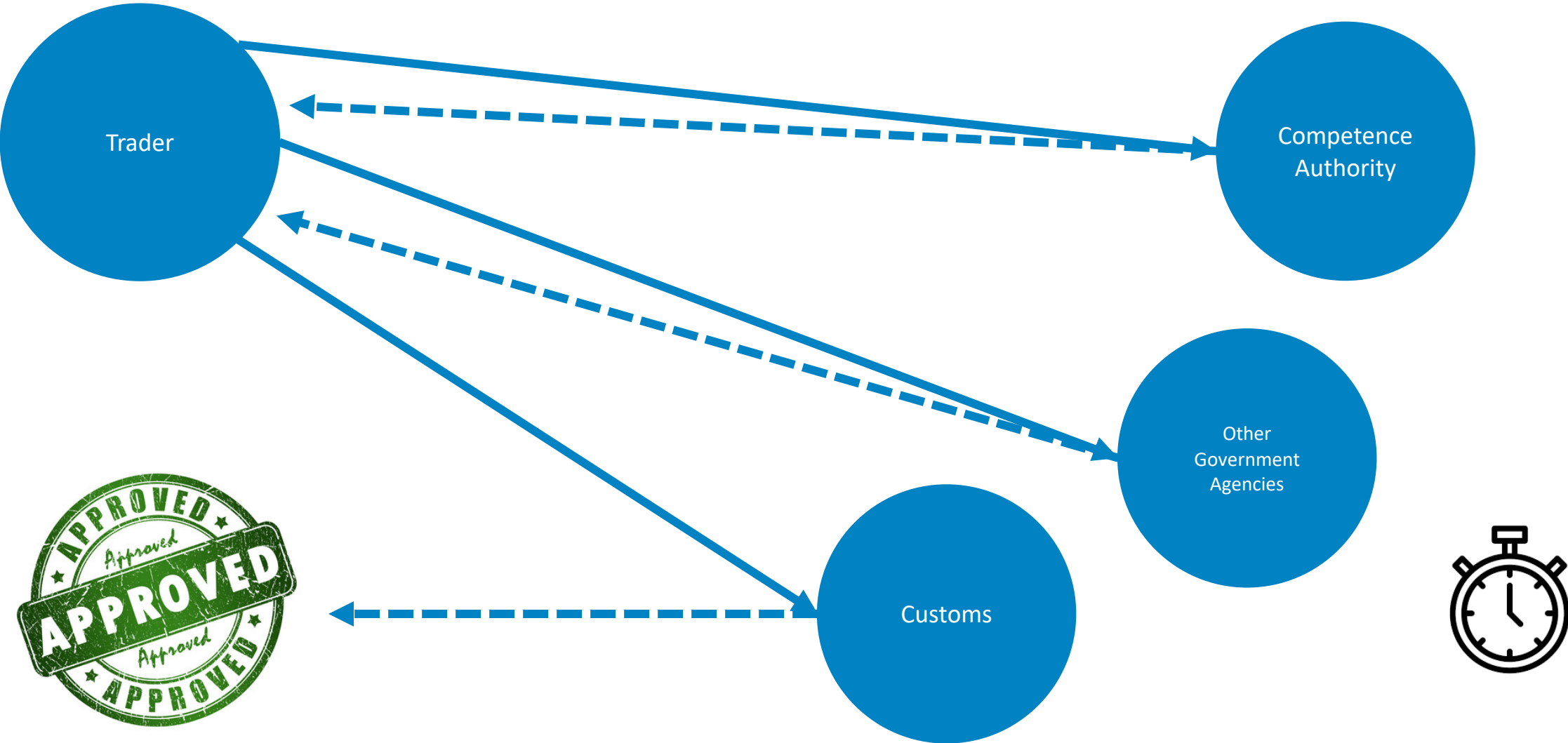
- WCO DM is a multipurpose regulatory data management framework;
- Information package is a tool to organize the subsets of the WCO DM based on their specific purposes
- An IP may have additional details related to the procedures it is implemented
- The basis to generate certain electronic messages / electronic messages' schemas.

Library

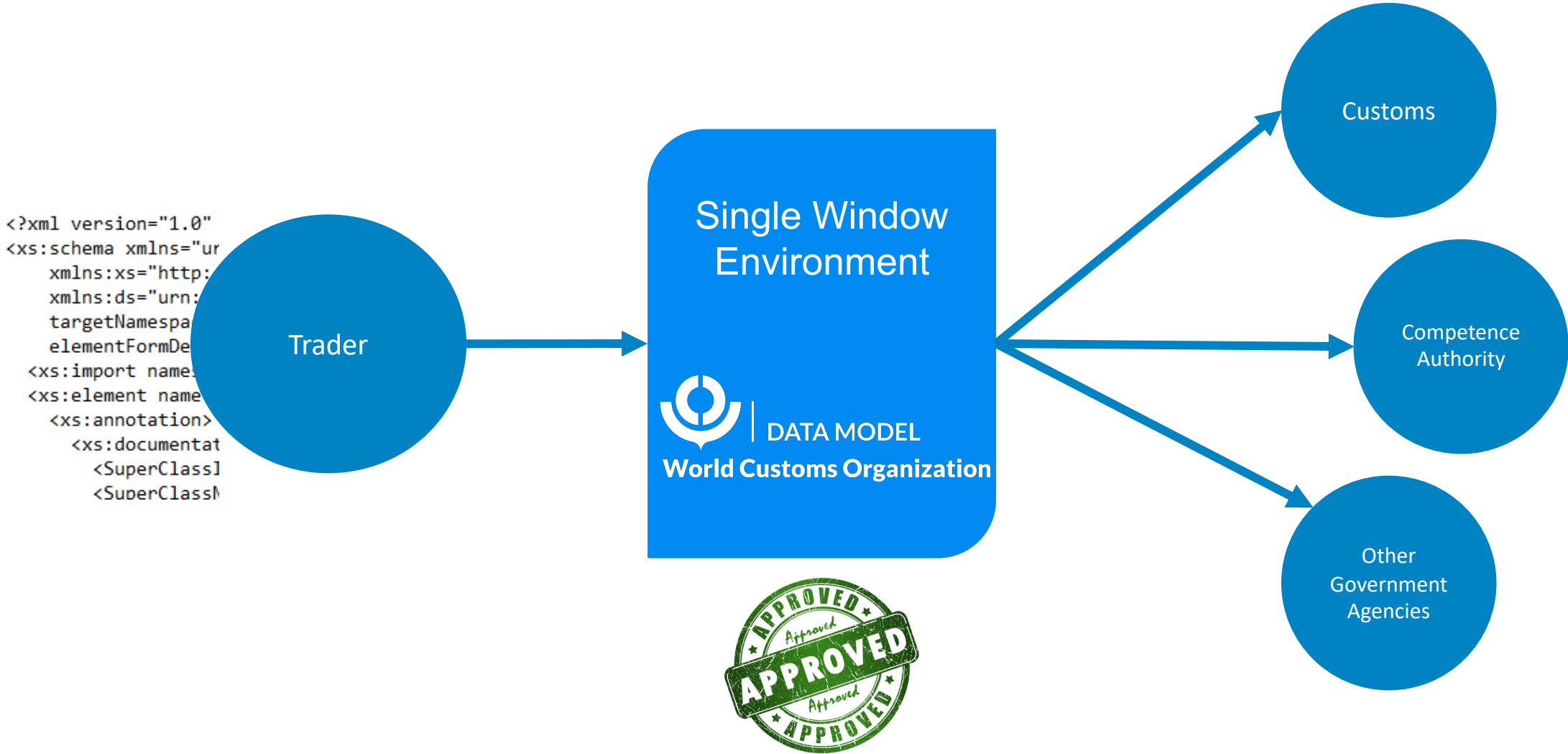
Overall Information Model



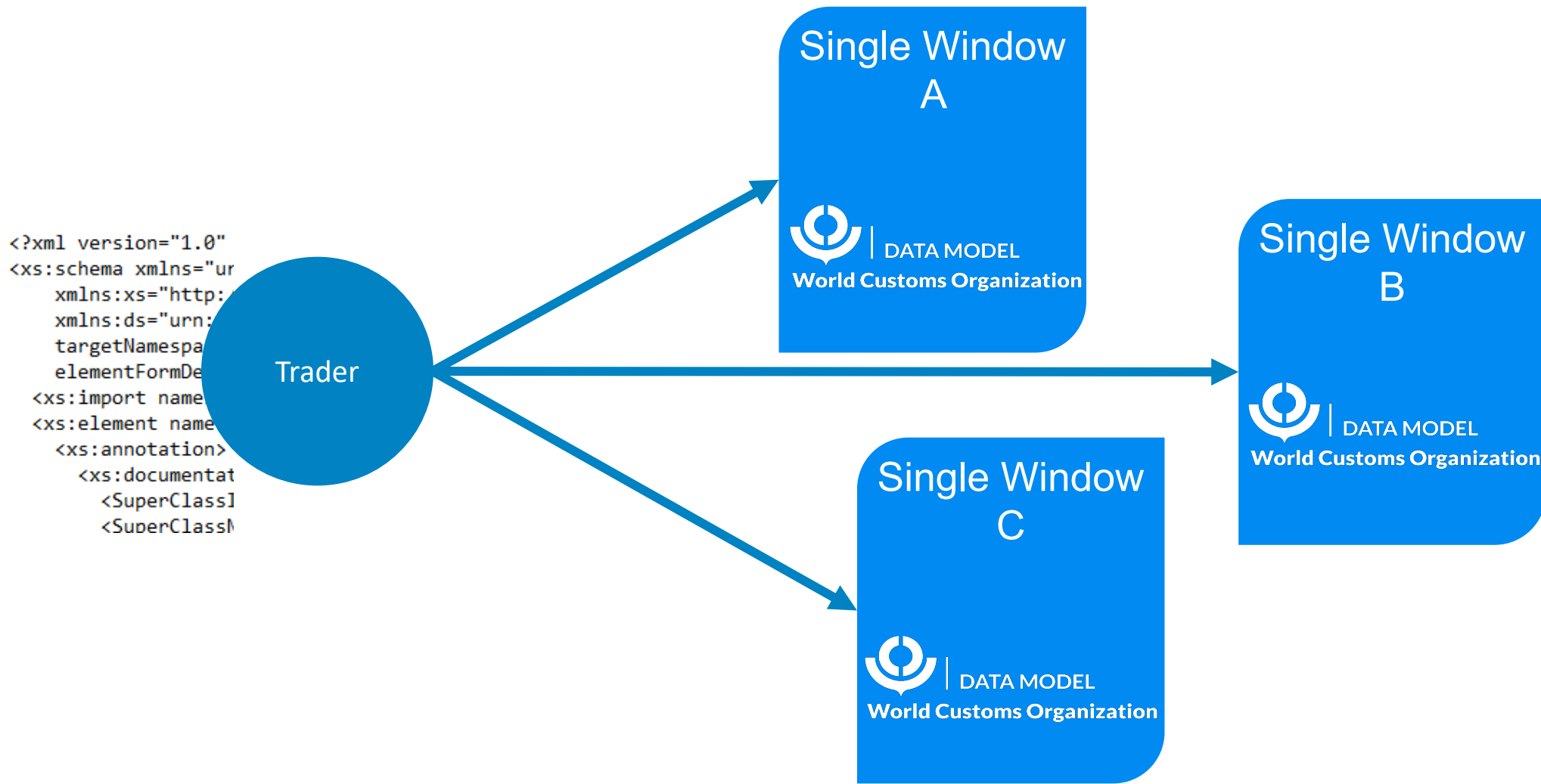
WCO DM Enables Single Window Environment



WCO DM Enables Single Window Environment

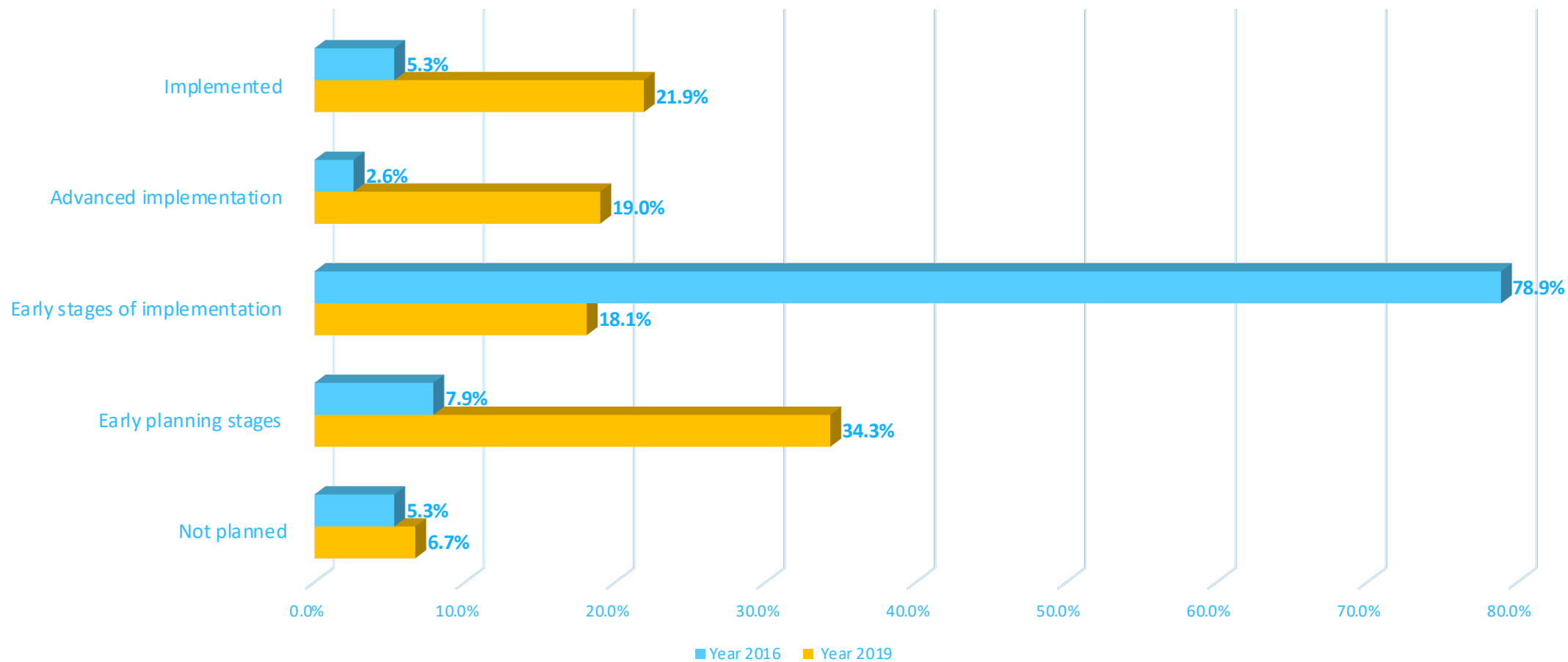


WCO DM Enables Trade Facilitation

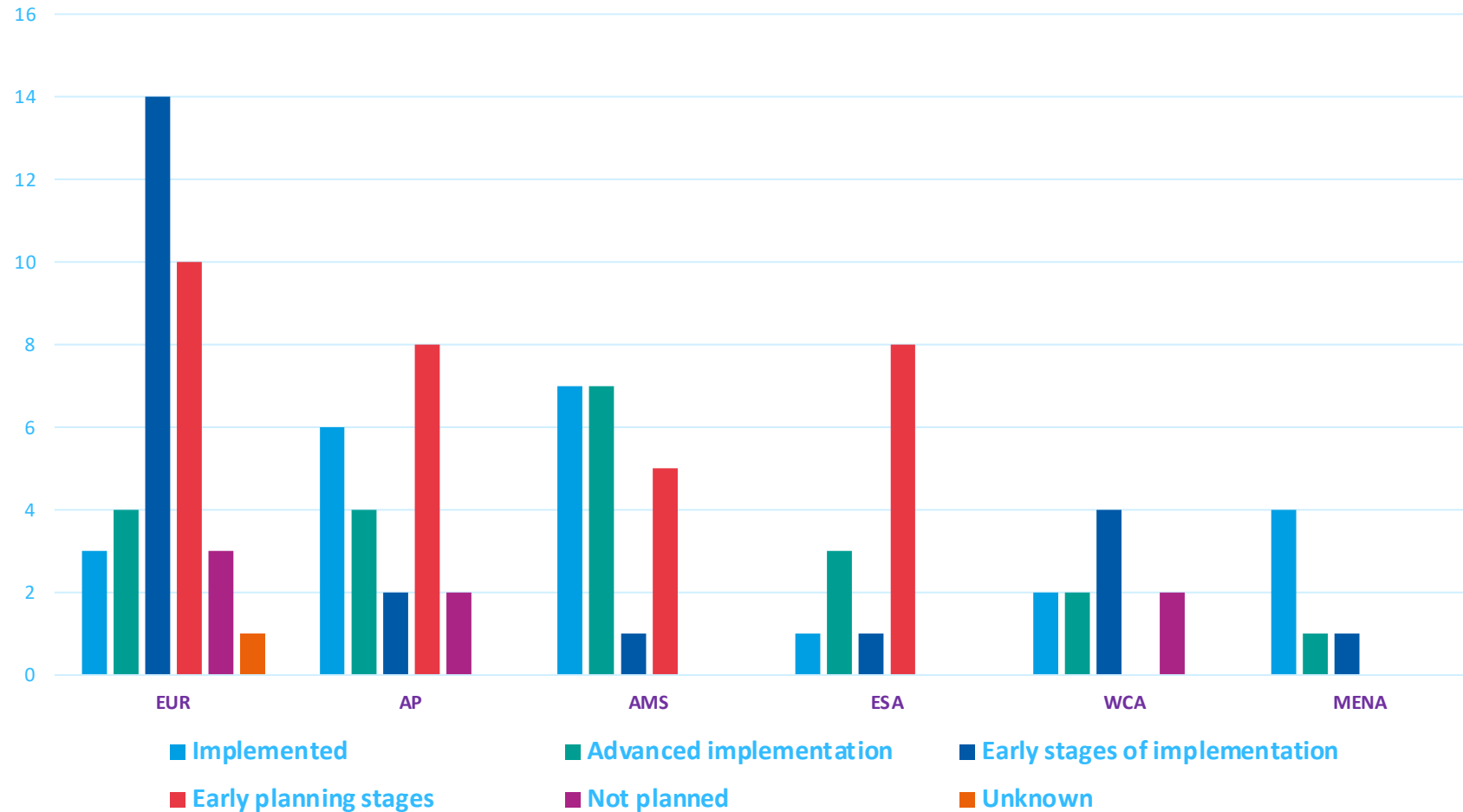


Single Window Facts and figures

2016 to 2019 Single Window stages of implementation for the WCO Members



Single Window stages of implementation per WCO region in 2019



SW Critical success factors





**World Customs
Organization**

Thank you

Juan Diego Chavarría

Procedure and Facilitation, Compliance and Facilitation
World Customs Organization

Juan.chavarria@wcoomd.org



www.wcoomd.org

WCO DM - SW Introduction

17