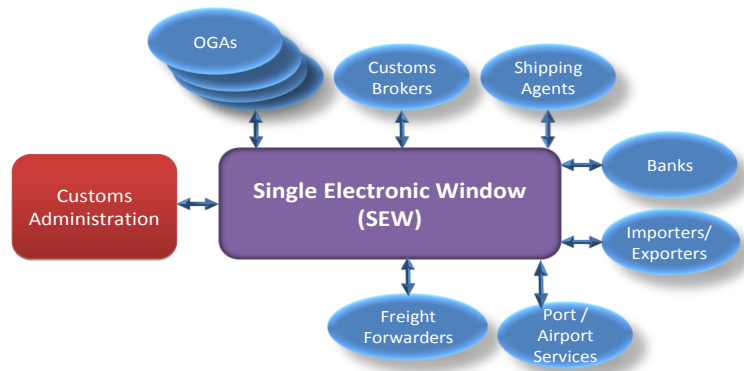


CAREC Workshop on Single Electronic Window Development

Issues to be considered and approach adopted for
development of national roadmaps for Single Window
Development



CHAN FOOK SENG
TESVIN CHOON
16 JULY 2009

- **High Level Decision and Political Will**
 - Understand the initiative
 - Trigger subsequent activities

- **Legitimate status**
 - Decree by the Head of State, President or Minister
 - Public Announcement



■ Alignment with National Strategies

- Garner support from the various stakeholders
- Support and necessary resources from State organs



■ Alignment with National Strategies

- Examples:
 - improve the country's ranking in the World Bank Doing Business Ranking
 - Position the country as a logistics hub
 - Increase foreign direct investment
 - CAREC Regional Transport Corridor



- **Decision on Lead Agency**
 - ❑ Spearhead and co-ordinate activities
 - ❑ Set policy and direction
 - ❑ Ability to garner support and cooperation from stakeholders
 - ❑ Decision of a Lead Agency can be a difficult task



- **NTTFC or National Working Groups**
 - Must be endorsed by the Government
 - Right combination of members – public and private sectors
 - Fair representation from major traders and SMEs



■ **Feasibility Study**

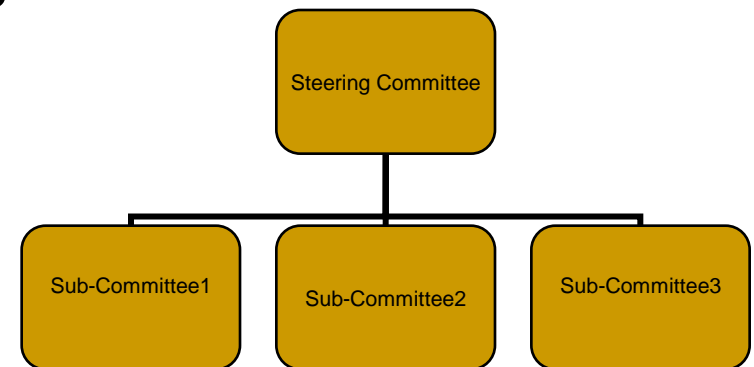
- Scope and demand level of SEW
- Organizational Aspects
- Human Resources and Training
- Legal framework

■ **Feasibility Study**

- Technical aspects – choice of technology, network infrastructure, data security, business continuity planning, etc
- Implementation Approach
- Business Model
- Promotion, Mass Adoption and Communications Programs

■ Establish Sub-Committees

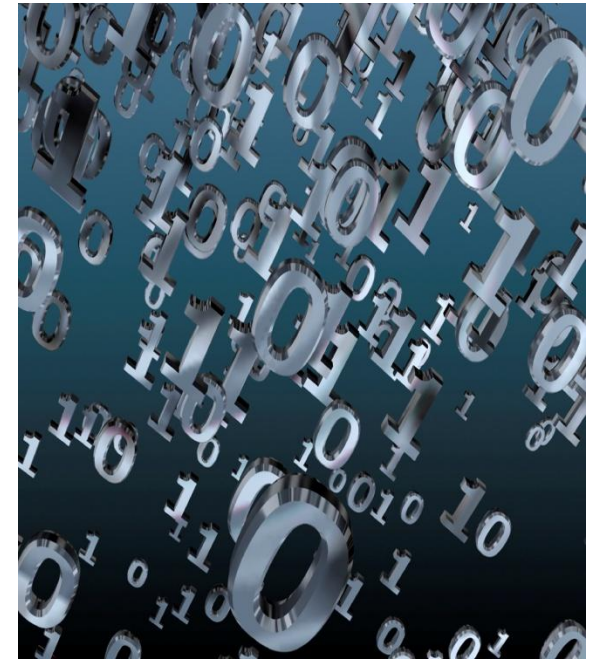
- ❑ Form and Data harmonization
- ❑ Legislation requirements
- ❑ Business Process Re-engineering
- ❑ Establish procurement team
- ❑ Use of international consultants



Harmonized Data Structure

ADB

- Data elements required by Customs and OGA
- Standardized data structure
- Coding system – UNLOCODE, HS Code, Currency Code



Harmonized Data Structure

The logo for the Asian Development Bank (ADB), consisting of the letters 'ADB' in white serif font on a dark blue square background.

- WCO Data Model
 - Version 1.1 - 163 data elements, Customs import and export declarations
 - Version 2.0 - completed in 2005, includes transit and transshipment
 - Version 3.0 - incorporates requirements of OGA, ready by the end of 2009.
-

- **Establish Implementation Project Team**
 - SEW implementation must be managed as a project
 - Scope, time and resources
 - Requirement Change Management



- **Establish Implementation Project Team**
 - Project status reporting – weekly, fortnightly, monthly
 - Work jointly with system development and hardware vendors



THANK YOU