

知“微”创源  
从“芯”启航

INNOSPRING FROM MICRO,  
SAILING FROM SIMIC

# The International Collaboration Development of SIMIC Incubator as an International Innovation Platform for Startups

## 新微创源国际创新平台的国际协同与合作

John Ren

任佳

10 May 2023

# Catalogue

## 目录

- 📦 Exploring Specialisation 专业化探索
- 📦 International Presence 国际化布局
- 📦 Branding Development 品牌化发展



## Exploring Specialisation 专业化探索

Deeply cultivate the hard&core technology track - from SIMIC's research results, committed to transformation and industrialisation, play a key role of incubator in the "Three-in-One" collaborative innovation system .

深耕硬核科技赛道——源自于科研院所的科研成果，致力于转化及产业化，发挥孵化器在“三位一体”协同创新体系中的关键作用。

# Why Hard&Core Tech

## 硬核科技——超前孵化的聚焦点

- Highly sophisticated and original technologies formed by long-term R&D investment have high technological thresholds and technical barriers, are more difficult to be copied and imitated, have clear application products and industrial bases, and have a strong leading and supporting role in the development of the industry.
- Compared to traditional startups, hardcore technology companies require long hours of research and development, more investment and support.
- SIMIC InnoSpring's goal is to provide space, resources and connections for companies working at the forefront of technology and to create a proven path to business success.



- 以自主研发为主，需要长期研发投入、持续积累形成的高精尖原创技术，具有较高技术门槛和技术壁垒，被复制和模仿的难度较大，有明确的应用产品和产业基础，对产业的发展具有较强的引领和支撑作用，是推动世界进步的动力和源泉。
- 与传统创业公司相比，硬核科技企业需要长时间的研发、更多的投资和支持。
- 新微创源的目标是为在技术前沿工作的企业提供空间、资源和联系，并创造一条经过验证的商业成功之路。

# The current situation in China - the cut-throat nature of results translation

## 中国的现状——成果转化的切肤之痛



According to the annual invention patent statistics released by the State Intellectual Property Office:

By the end of 2022, the number of valid invention patents in China reached 4.212 million, and the number of high-value invention patents per 10,000 population reached 9.4; 61,000 integrated circuit layout designs were issued in total.

In recent years, the number of invention patents in China has increased significantly, ranking first in the world for many years in a row, but the conversion rate is low, averaging about 10%, far below the level of 30% to 40% in developed countries.

根据国家知识产权局发布的年度发明专利统计数据：

截至2022年底，我国发明专利有效量达421.2万件，每万人口高价值发明专利拥有量达9.4件；集成电路布图设计累计发证6.1万件。

近年来，我国发明专利数量大幅增多，连续多年名列世界第一，但转化率偏低，平均约为10%，远低于发达国家30%至40%的水平。



# A source of innovation for hard technology incubation

## 硬科技孵化的创新源泉——大学、院所

### The oldest institute in China 中国历史最悠久的研究所



1934年冬，国立中央研究院院长蔡元培（左三）、工程研究所所长周仁（右二）等在工程研究所（微系统所前身）办公楼前合影

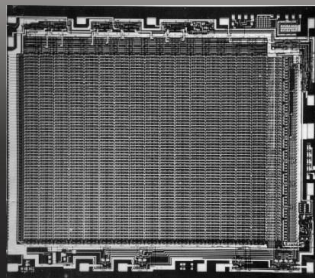
1930s and 40s



1950s and 60s



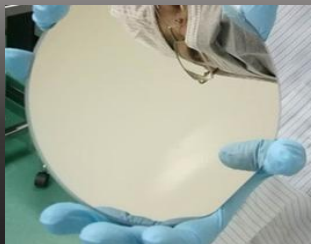
1970s and 80s



1990s



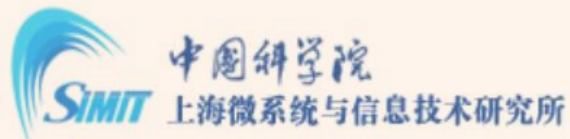
2001-Present



# Exploring "Three-in-One" Collaborative Innovation Practices

## “三位一体”协同创新实践探索

### Technology curators 技术策源主体



- Scientific innovation  
科研创新

### Pilot conversion subjects 中试转化主体



- Technology R&D Platform  
技术研发平台
- Engineering Services Platform  
工程服务平台



### Incubation and industrialisation subjects 孵化与产业化主体



- Industry Incubation  
产业孵化
- Capital Operation  
资本运作





# R&D pilot platform - an important grip for transformation and incubation

## 研发中试平台——转化与孵化的重要抓手

SITRI: New Research and Development Institute  
上海微技术工业研究院：新型研发机构



The "four pillars" of Shanghai Science and Technology Innovation Center,  
the world's leading 8-inch MtM R&D pilot line.  
上海科创中心建设的“四梁八柱”，全球领先8寸MtM研发中试线。



# About SIMIC InnoSpring

## 关于我们

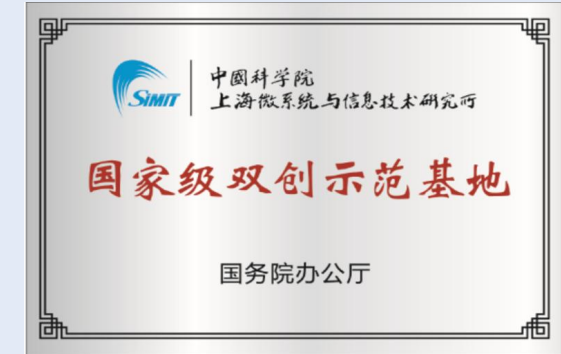
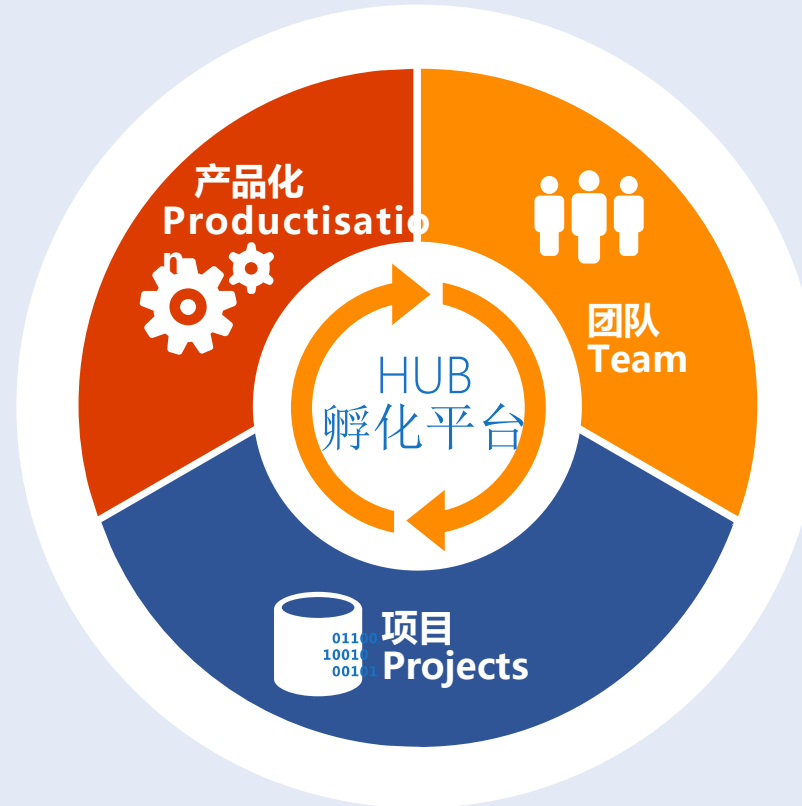
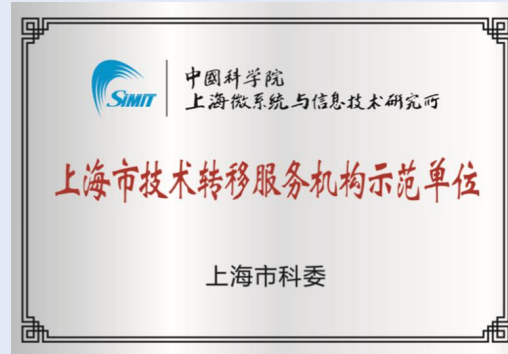


- SIMIC InnoSpring is an innovative technology incubation and acceleration platform with SIMIC as the background and the core direction of the IoT and advanced sensor industry. It is committed to building a professional, international and branded science and technology innovation centre with global influence, creating a highland of sensor and IoT innovation and forming an industrial cluster.
- Founded in July 2014, SIMIC InnoSpring Incubator has served thousands of start-ups and incubated over 100 projects since then. It has achieved remarkable results and reserved considerable industrial resources in the field of IoT sensors.
- SIMIC InnoSpring has been certified as a professional incubator by the central government of China.

新微创源孵化器是以集成电路、先进传感器及其应用为聚焦领域的硬核科技创新孵化器。专业化、国际化、品牌化是新微创源的目标。从2014年成立至今，服务过上千个硬科技创业者（其中半数以上有海外学习或工作经历的），孵化了100多个初创项目。新微创源孵化器经过多年努力，获得了由中国中央政府颁发的专业孵化器认证。

# Incubators: driving the transformation of results and creating an industrial ecology

## 孵化器：驱动成果转化，营造产业生态



**There are 100+ incubatees, 60% originated from the transformation of the achievements of research institutes, 90% focus on IC chips, sensors, and related materials, devices, services and applications, forming a specific industrial chain and ecosystem.**



## International Presence 国际化布局

Focus on cutting-edge technology dynamics, screen disruptive technology seeds and dock global innovation resources.

关注科技前沿动态，筛选颠覆性技术种子，对接全球创新资源。

# Windows & Channal

## 新微创源——窗口&通道



(新加坡) 全球一带一路技术  
转移转化中心合作



中科院曼谷创新中心



与埃及电子研究所电子产业  
孵化器签署国际合作备忘录



Swissnex中国  
START Global



SLUSH加速器



德国TUV莱茵



荷兰壳牌新能源



芬兰VTT

Forward thinking - need global vision, open windows,  
connect the world

Hardcore - need to be internally and externally compatible,  
build channal and market proven

超前——需要全球视野，打开窗口，连接世界

硬核——需要内外兼容，搭建通道，市场验证



# Bringing in - exchange and cooperation of talents and technologies

## 引进来——人才、技术的交流与合作



### Talent Exchange

SiTEC & "SH SHSILICON ALLEY PREQUEL" THE CROSS-BORDER WAY OF SEMICONDUCTOR INDUSTRY AND TALENTS



### Technical Exchange

Call For Hydrogen Delivery And Dispensing Solutions



### Industry Exchange

Agenda of Signing ceremony between ERI and Simic-InnoSpring Incubator

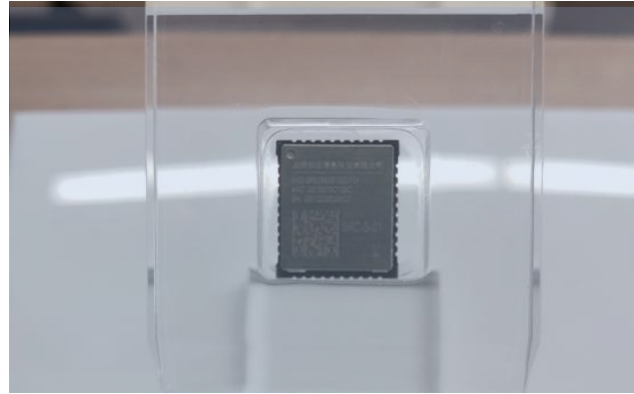
# Going global: the example of Belt and Road countries

## 走出去：以一带一路国家为例



### Thailand

PCR rapid test device receives FDA approval in Thailand and is successfully sold.



### Singapore

SIMIC's R&D technology applied to smart water meters in Singapore.



### Egypt

Introduction of New Cairo University of Science and Technology, PTS Group, ORO Fund and initial cooperation between the two parties



# Branding Development 品牌化发展

creating an ecology of innovation, triggering the passion and inspiration of entrepreneurs,  
Allowing start-ups to feel the power of converging resources.

一个能汇聚各方创新资源的HUB，需要持续营造创新生态，触发创业者的激情和灵感，让初创企业在这里感受到资源汇聚的力量。



# Creating an entrepreneurial ecology

## 新微创源：营造创业生态



## Startup Competitions



~黑科技大咖说~ 本期嘉宾：  
MEMS芯片达人-于海涛 上...

~黑科技大咖说~ 本期嘉宾：  
生物芯片达人-陈昌博士、...

黑科技大咖说 本期嘉宾：功  
率超声达人-赵博熙 中国科...

~黑科技大咖说~ 本期嘉  
宾：超材料达人吴卫平 中...

~黑科技大咖说~ 本期嘉  
宾：石墨烯达人 丁古巧 中...



## Short Eideos

## Forum Events



# Leveraging joint external resources

## 新微创源：撬动联手外部资源



# Deep industry collaboration for big business innovation

## 新微创源：深耕产业协同大企业创新



Focusing on new energy and smart energy industries

专注于新能源与智慧能源产业



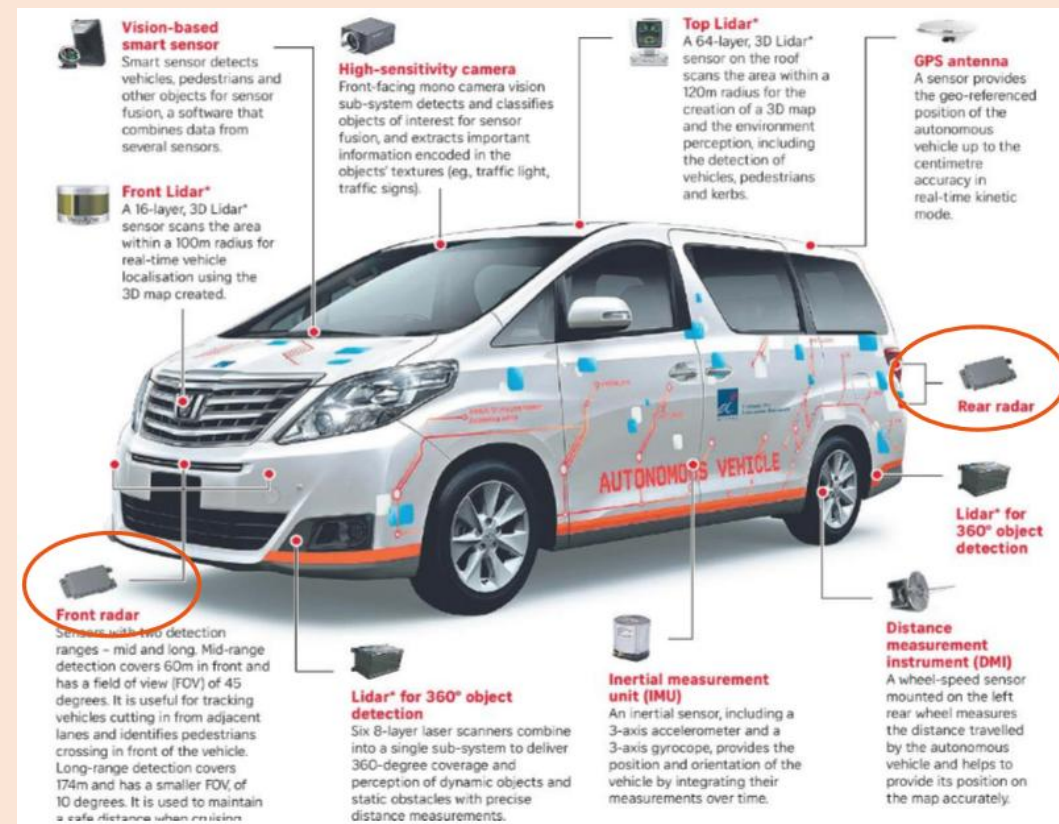
Focusing on automotive chips

专注于汽车芯片



Focusing on talent for the IC industry

专注于集成电路产业人才



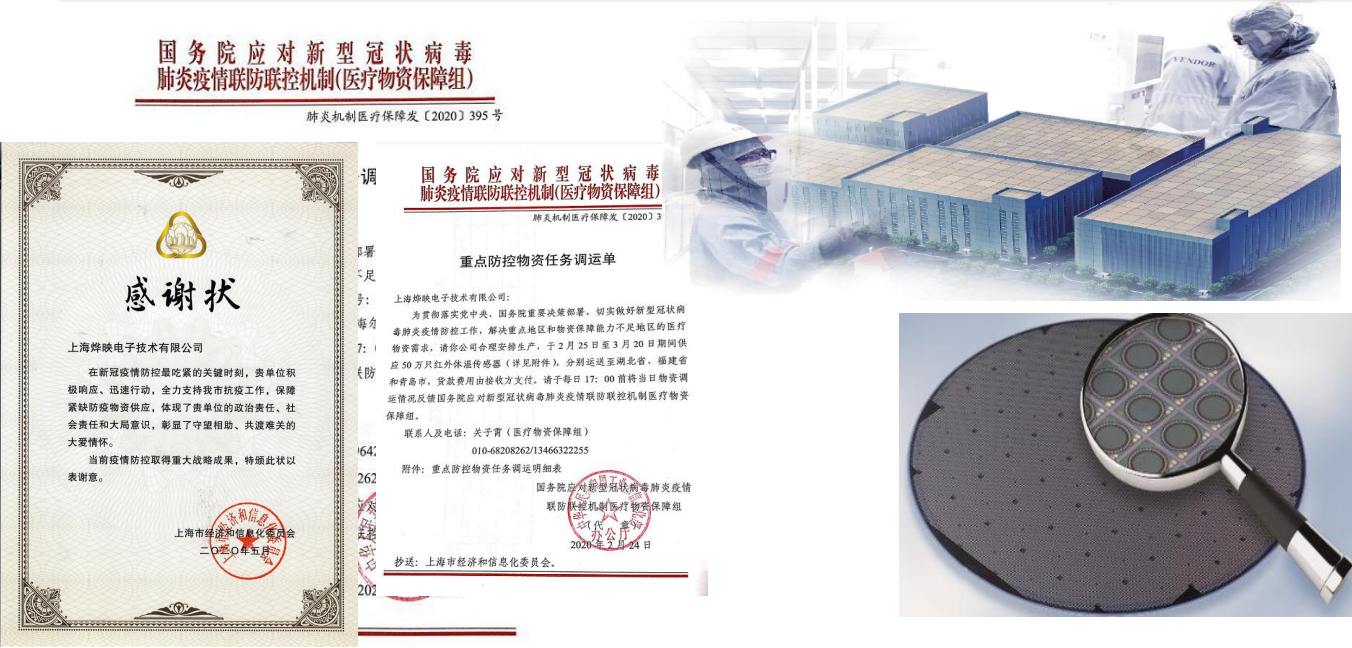
Building an innovation platform that is closely integrated with local industries  
搭建与地方产业紧密结合的创新平台



# The case for incubation: opportunity for those who are prepared

## 孵化案例：机会留给有准备的人

### Yeying solves the country's "chip shortage" problem



The company's thermopile infrared sensor products are widely used in infrared thermometers, thermostats, gas measurement, industrial instrumentation, intelligent sensing of the Internet of Things and intelligent human-computer interaction and other fields. The products have gradually replaced imported chips in the market.

### [视频]李克强到湖北武汉考察指导新型冠状病毒感染肺炎疫情防控工作

中央政府门户网站 www.gov.cn 2020年01月27日 19时14分 来源：央视网



烨映公司的热电堆红外传感器产品广泛应用于的物联网的智能感知和智能人机交互等领域，产品在市场上已经逐步替代进口芯片。

**Hard&Core Tech Incubation,  
Craftsmanship Spirit!  
Frontier Tech Incubation,  
Keen Eyes & Venture Capital!  
Achievements Transformation!  
Global & International!**





# THANK YOU

任佳 2023.4

