



# Application of Information Technologies in China Customs

—— WU Jiang, Shanghai Customs College

2010-6-29

1



## ❖ History

## ❖ Status Quo

❧ Scale

❧ Typical application: E-port

❧ Other major applications

## ❖ Importance of application of IT in China Customs

## ❖ H2010 Project

# History

1999- the forex and declaration networked verification system put into use.

控分析及帮助决

(2001)

2001, Customs enforcement evaluation system put into operation.

口岸执法管理跨部

(1998)

1998, began to roll out clearance reform and the use of H883 system (version 5.0)

海关内跨部门跨地

(1988)

1988 – began to develop and use a customs clearance system (H883 system).

系统化应用

(1978)

单项应用阶段

1978 – began to utilize computers for duty collection on passengers' baggage.



## ❖ History

## ❖ Status Quo

### ⌘ Scale

⌘ Typical application: E-Port

⌘ Other major applications

## ❖ Importance of application of IT in China Customs

## ❖ H2010 Project

2010-6-29



## Scale

**30 years of development. Constant explorations and accumulation. Network infrastructure, technological equipment, project development and applications. Gradually phased in the above-mentioned applications. Preliminary explorations are made in networked clearance processing, smart cargo flow control, and digitized management system.**

# Scale



## (1) Network infrastructure

**Based on telecom companies' broadband PSTN ATMs, complemented by DDN lines, frame relays, X.25, and backed up by telephone dial-up lines, we established a large-scale networked system covering all the operational sites nationwide totally over 800 nodes.**

# Scale

## (2) Investment in Science, Technology and Equipment



By the end of 2009

Small machines	390
PC servers	2575
Storage systems	291
PCs	73,000
Network equipment	8222 sets

Container inspection systems	59
Inspection equipment for articles	440 sets
CCTVs	22 sets
Express consignment inspection systems	3 sets
Other equipment	.....

# Scale



## (3) General picture of project development and applications

“E-Customs” projects: > 120

“E-GACC” projects: > 40

“E-port” projects: > 42

Local projects developed by regional  
Customs: > 280





## ❖ History

## ❖ Status Quo

↪ Scale

↪ **Typical application: E-Port**

↪ Other major applications

## ❖ Importance of application of IT in China Customs

2010-6-29

## ❖ H2010 Project



中国电子口岸  
CHINA E-PORT



**中国海天信息现代化的创举**

**——中国电子口岸**

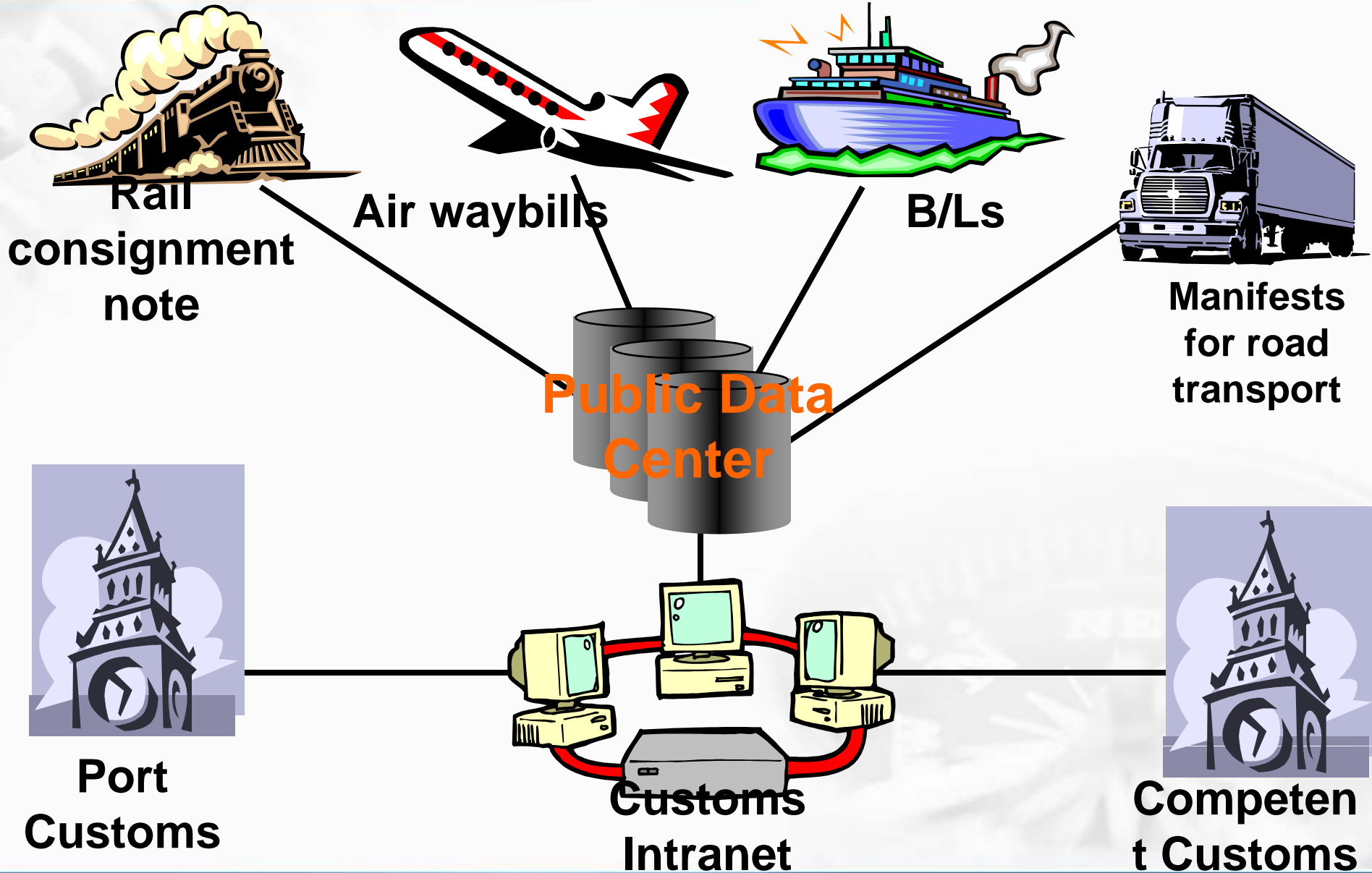


## **中国电子口岸 CHINA E-PORT**

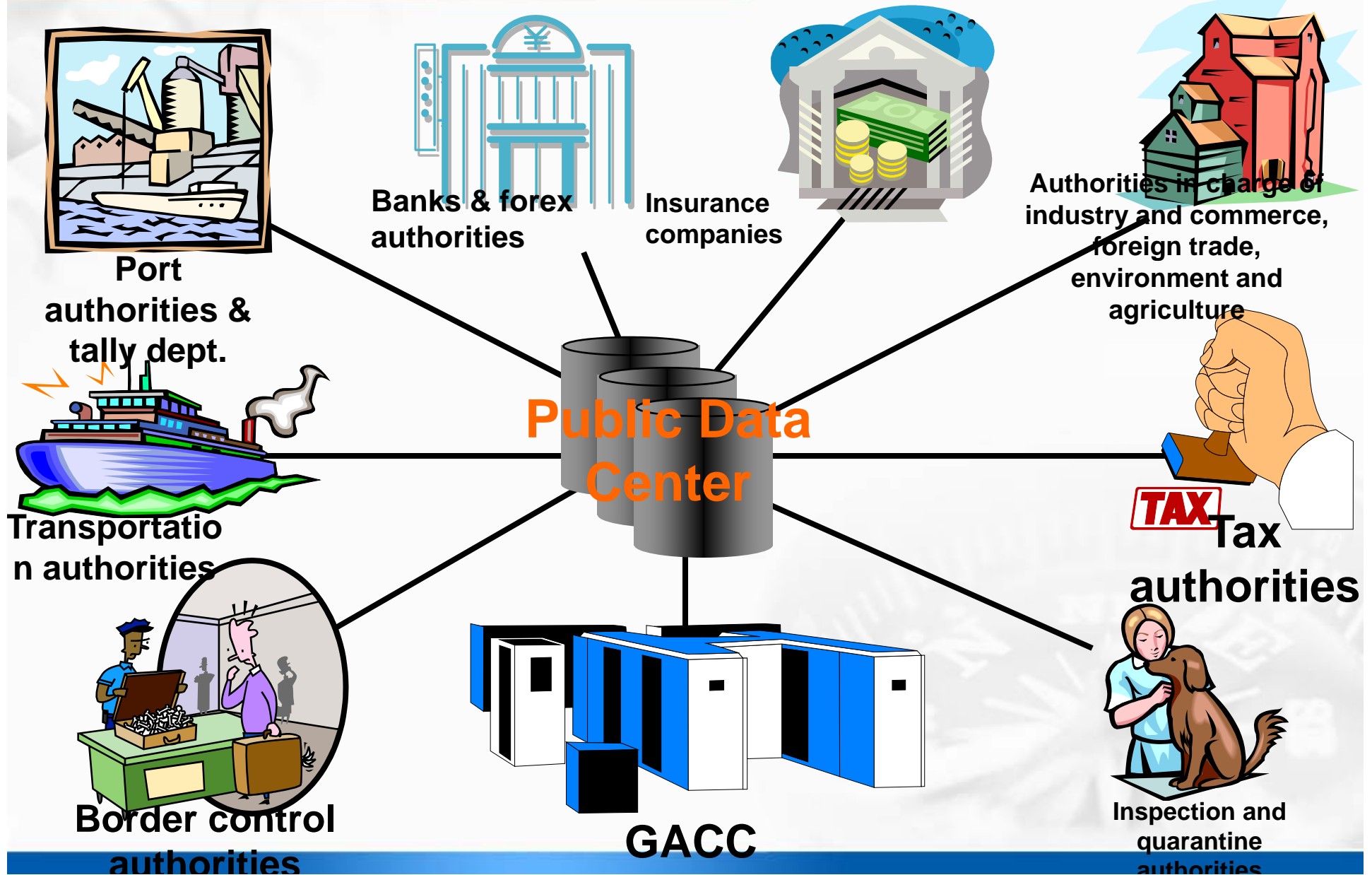
**China E-Port is a public data center and data exchange platform based on telecom companies' PSTN, which networks the authorities in charge of industry and commerce, Customs matters, forex management, foreign trade, quality supervision, inspection and quarantine, as well as banks, importers, exporters, companies engaging in processing trade, foreign trade intermediaries, and owners of goods, making one-card for all and one-stop services possible.**

**To establish a new management model featured by “E-ledger, networked verification and online services”, we built an integrated data center, i.e. single database, single switch center and single window. This has helped with the realization of “standardized and transparent enforcement, extended time and space for Customs control, holistic solution, risk management, and rule of law”.**

# *Establishment of E-ledger (Cargo flow)*



# Cross-cutting Networked Verification





## **Mottos of China E-Port:**

**Service-oriented, demand-oriented, promoting economic development through cooperation.**

## **Principles of development:**

**“Unified certification, unified standards, unified brand”**



## What is an E-Port

The goal is to build a unified information platform aimed at port clearance and enforcement mainly, which gradually expands to relevant logistics business and services, to realize integrated clearance, integrated logistics and integrated foreign trade. Two components:

1. **China E-Port.** Designed to realize data sharing and networked verification among government agencies under the State Council for integrated clearance, a shift from separate information platforms towards a single unified information platform. Information provided by those government agencies through this unified information platform is only intended for providing services for enterprises, so only involves data and information related to clearance, and other information (e.g. the proprietary information of the government agencies) is still kept within their own information systems and not disclosed to businesses.
2. **Local E-Ports.** Designed to bring the core procedures for integrated clearance and relevant logistics and business services onto a single unified information platform for local authorities, local institutions and business, to realize nationwide “unified certification, unified standards, unified brand”.



## Objectives of China E-Port:

To be a paragon of China e-governance. Within 5 years, to build E-Port into a unified information platform to realize one portal for access to all, one-time subscription and one-stop processing of formalities, for both port clearance and enforcement and relevant logistics and business services. This will render port enforcement and administration more effective and efficient, and make clearance more orderly and easier, thus elevating China's openness to the outside world and its competitive edge on the international arena.





## Status Quo of China E-Port

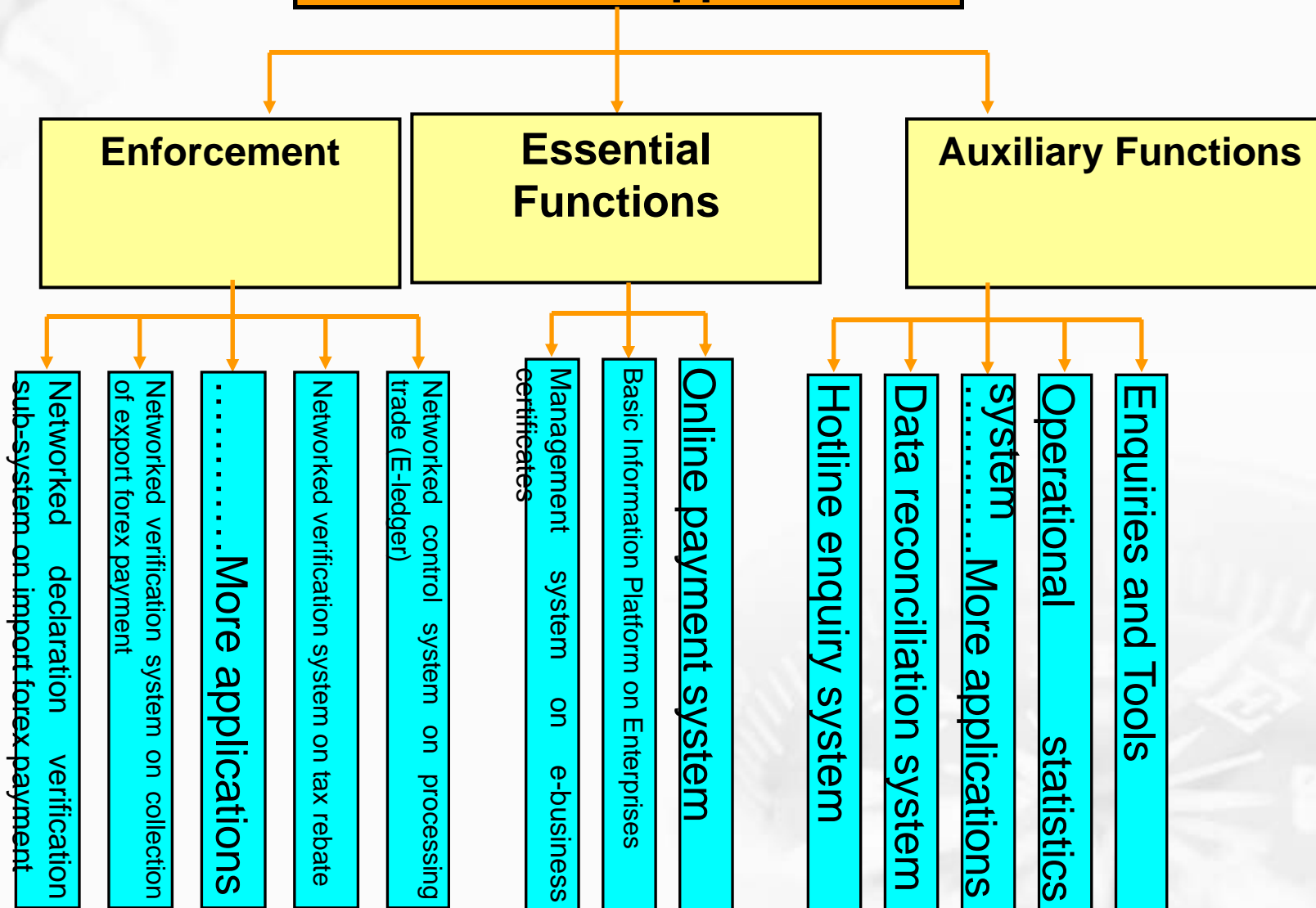
A total of 61 application projects already put into use.

Interoperability and information sharing is now available among the National Development and Reform Commission (NDRC), GACC, State Administration of Foreign Exchange (SAFE), State Administration of Taxation (SAT), General Administration of Quality Supervision, Inspection and Quarantine (AQSIQ), State Administration of Industry and Commerce (SAIC), Ministry of Commerce (MOFCOM), Ministry of Railway, Ministry of Environmental Protection (MEP), China Council for the Promotion of International Trade (CCPIT), Trade and Industry Department of Hong Kong SAR, Macao SAR's Economic Service, as well as the Bank of China (BOC), the Industrial and Commercial Bank of China (ICBC), the Agricultural Bank of China (ABC), the Bank of Communications (BOC), China Merchant's Bank, totally 13 commercial banks. 470,000 companies have jointed this platform. Everyday, it processes around 1.2 million e-documents. China E-Port's portal daily hits have reached 4.8 million person times. The systems are operating smoothly.



# 中国电子口岸 CHINA E-PORT

## China E-Port Applications





## Major Functions of China E-Port

- (1) data exchange
- (2) transaction processing
- (3) evidence storage and production
- (4) standards switch
- (5) enquiries and statistics
- (6) network isolation
- (7) online payment



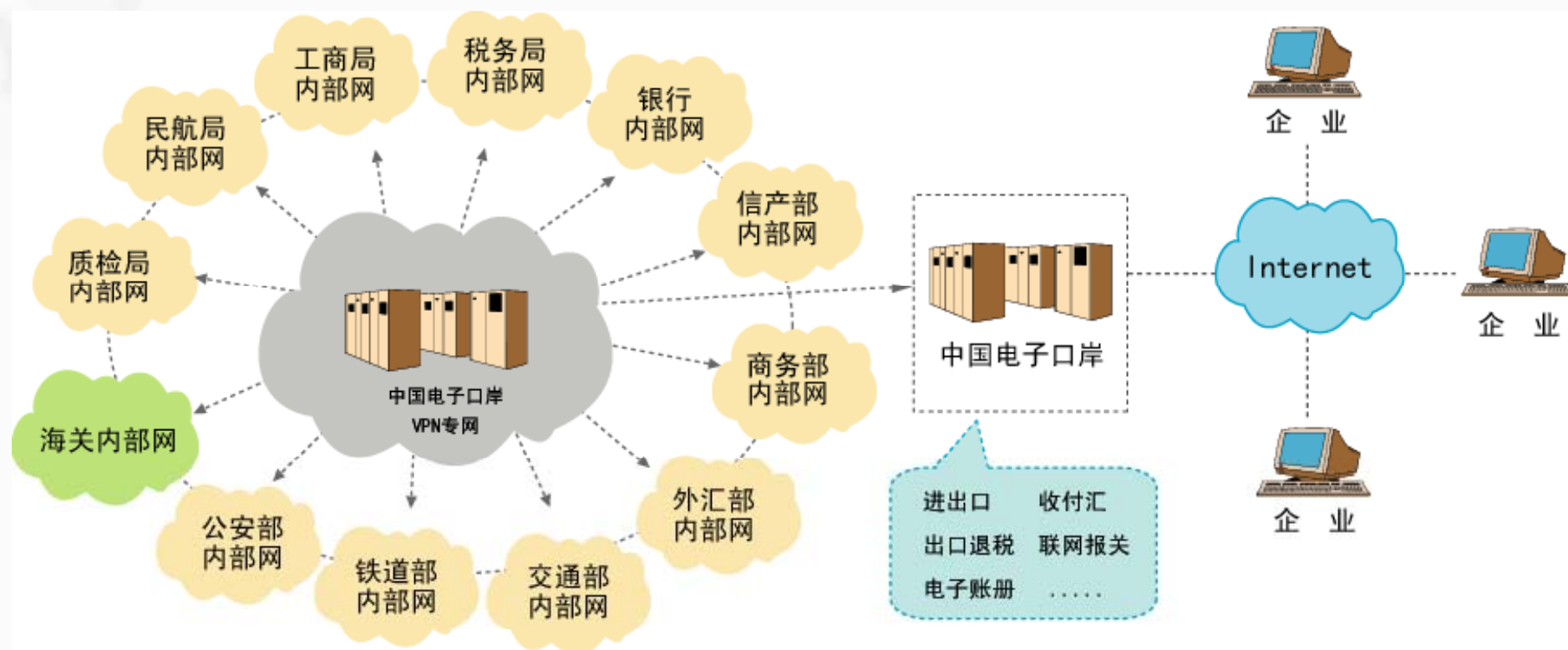
## Importance of China E-Port

- **Enhanced port enforcement and administration, elevated administrative enforcement capacity for government agencies**
- **Raised clearance efficiency, and reduced costs for businesses**
- **Improved non-physical environment for investment, and promoted development of logistics industry**
- **Advanced e-governance, and improved government services**



# 中国电子口岸 CHINA E-PORT

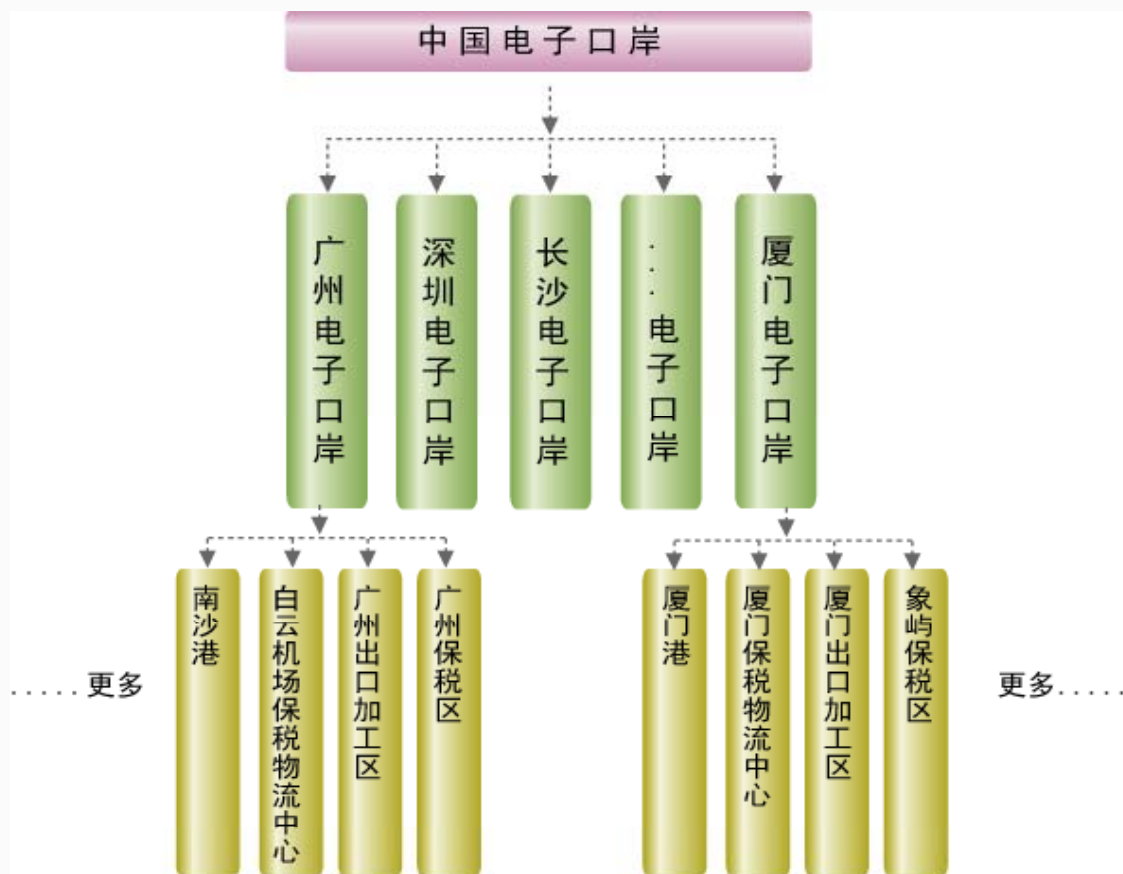
## E-Port Network Structure





# 中国电子口岸 CHINA E-PORT

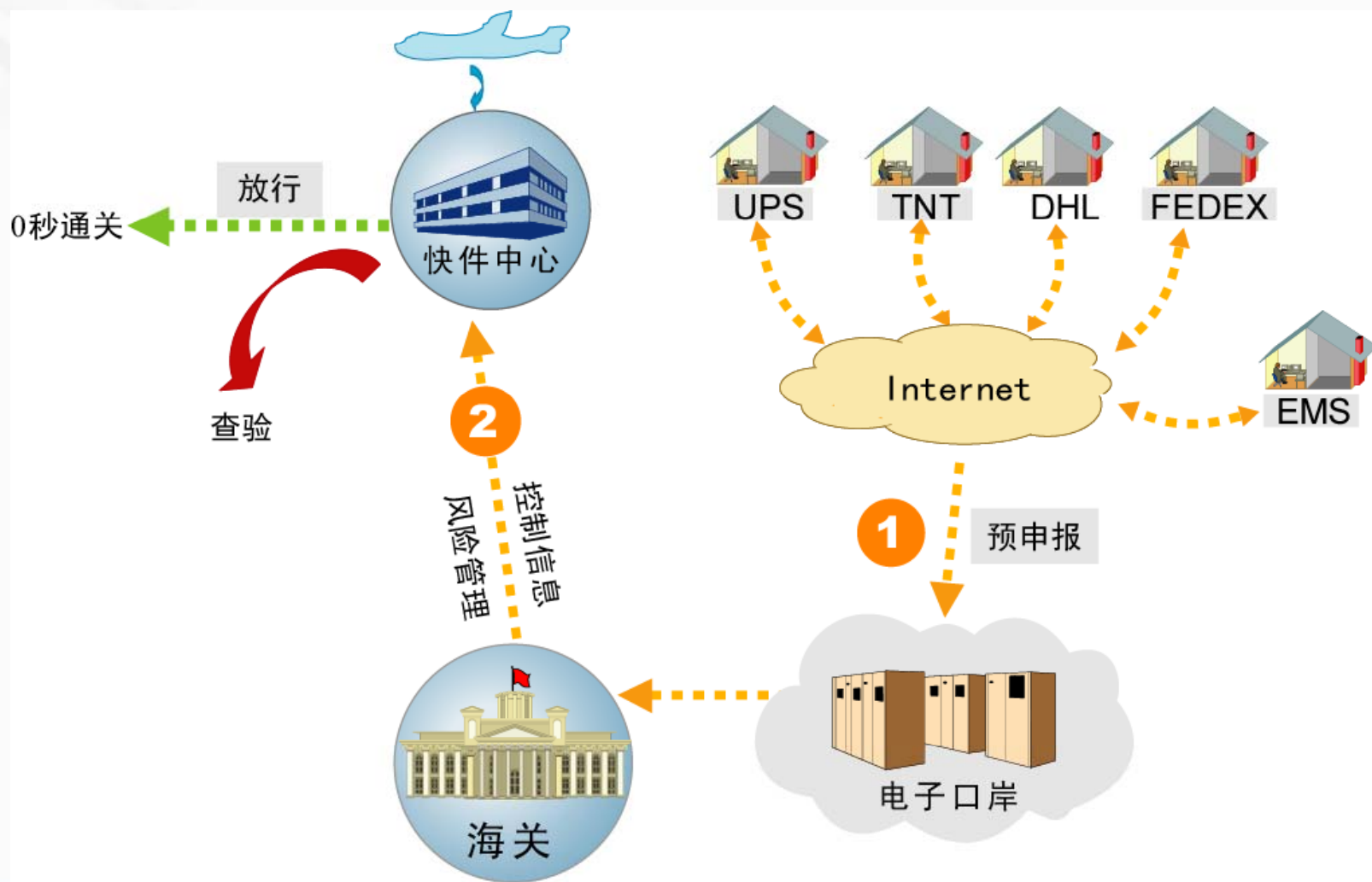
## E-Port Vertical Management Architecture





# 中国电子口岸 CHINA E-PORT

## Networked Applications for Express Consignments





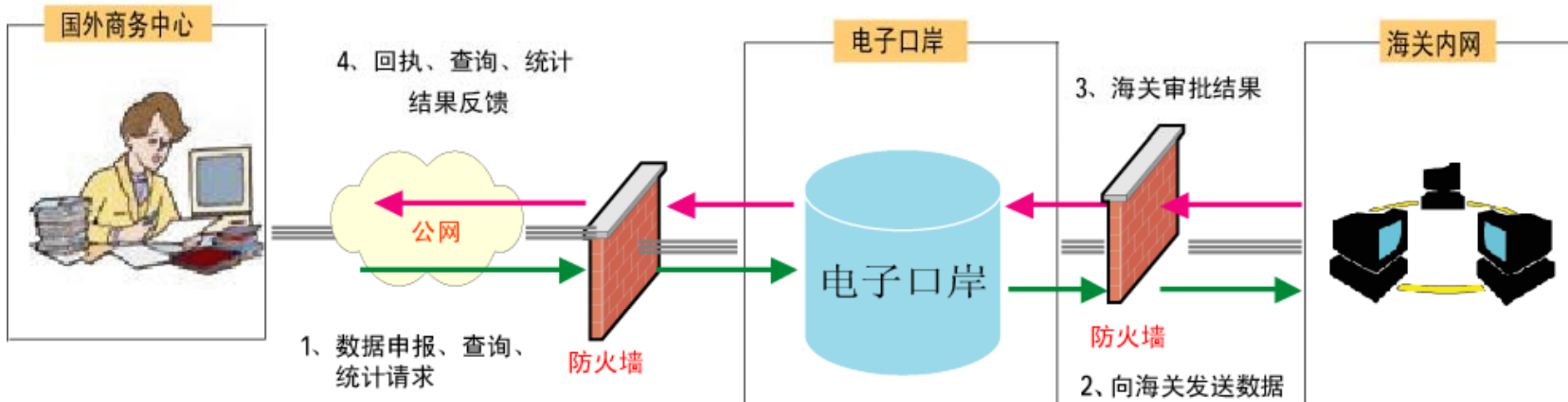
# 中国电子口岸 CHINA E-PORT

## Networked CO Verification System among Laos, Cambodia and Myanmar

国外发证机构

电子口岸

H2000系统



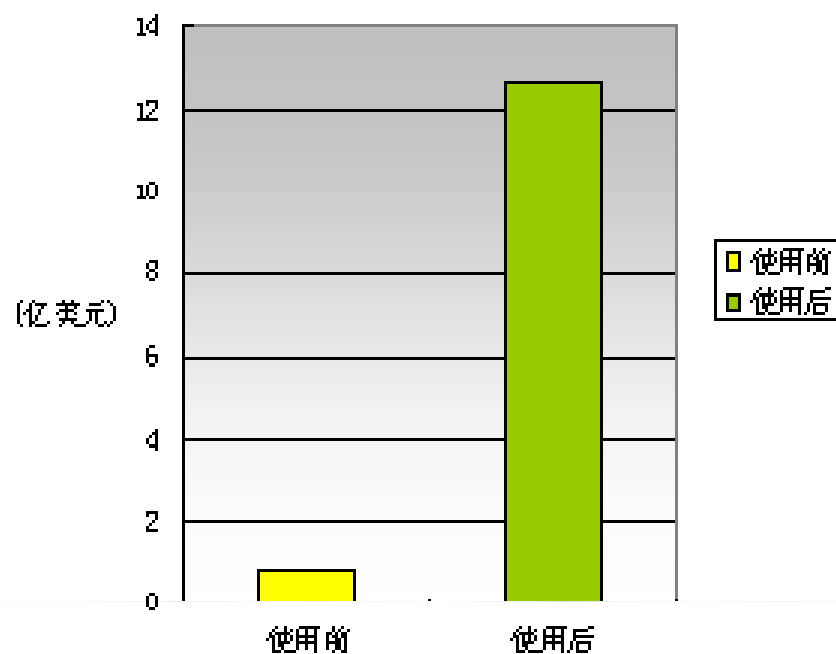




# 中国电子口岸 CHINA E-PORT

## Networked Control System on Processing Trade

Before using this system of China E-Port, Inventec's annual export value was only US\$ 80 million. After utilization of the system, the annual exports surged to US\$1.27 billion, a 15-fold increase.





## **中国电子口岸 CHINA E-PORT**

**With the applications of China E-Port, remarkable economic and social benefits have been brought about in port clearance and administration as well as the modernization and informatization of logistics. We are looking forward to close informatization cooperation with other countries to make even greater contributions to the security and facilitation of global trade.**



- 客服专区 | 入网指南 | 常见问题 | 互动论坛 | 程序下载 | 项目资料 | 业务指南 | 企业邮局
- 在线购卡 | 分支机构 | 海关实务 | 通关指南 | 海关动态 | 报关员 | 东方口岸 | 海关杂志

热点频道: { 在线购卡 } { 报关员 } { 东方口岸 } { 常见问题 } { 互动论坛 } { 项目资料 } { 保险经纪 } { 电子化手册 }



### 口岸公告

- 关于启用自助语音查询功能的公告
- 关于开通投诉电话的公告
- 使用公自用物品管理系统驻华外交机构专用制卡登记表

更多>>

## 安全技术服务用户登陆

点击进入 **中国电子口岸执法系统**



## 安全产品及解决方案



各地海关链接

### 海关动态

更多 >>

- 石家庄海关：诚信经营企业获海关优先支持
- 上海海关：世博会境外媒体注册记者顺利通关
- 拱北海关：4万件赈灾物资快速通关
- 常州海关：推动进出口物流改道应对世博影响
- 海关总署：捐款捐物抗震救灾
- 上海海关：多种形式哀悼玉树受灾同胞
- 福州海关：答疑解惑助海西绿色腹地腾飞
- 南京海关：邮递渠道查获走私大麻7.1公斤
- 珠江口“天眼”告成 海上巡查再添利器

### 通关指南

更多 >>

通关法规 | 通关手续 | 旅客通关 | 货物通关  
通关代码 |

- 海关总署公告2010年第29号
- 进出境运输工具改、兼营境内运输审批
- 海关总署公告2010年第24号
- 出口监管仓库、保税仓库设立审批
- 关于海关总署开具备案费收据的说明
- 中国海关实施AEO制度情况简介
- 关于公布海关特殊监管区域有关管理事宜

欢迎您访问 [www.chinaport.gov.cn](http://www.chinaport.gov.cn) 中国电子口岸。

中国电子口岸是国务院有关部委将分别掌管的进出口业务信息流、资金流、货物流等电子底帐数据集中存放到口岸公共数据中心，为各行政管理部门提供跨部门、跨行业的行政执法数据联网核查，并为企业及中介服务机构提供网上办理进出口业务服务的数据交换平台。

请输入IC卡密码：

常见问题解答

确认

一键修复

一键修复工具介绍

NEW

中国电子口岸数据中心综合服务网



请您按照以下步骤进行：

- 1、请先插入IC卡。
- 2、在输入框中输入IC卡密码。
- 3、请点击系统主页【退出系统】退出，取回您的IC卡。



热线服务电话：010-65195656 热线服务邮箱：[rexian@chinaport.gov.cn](mailto:rexian@chinaport.gov.cn)

热线服务传真：010-65194704



报关一点通

交通銀行  
BANK OF COMMUNICATIONS

7\*24小时全天候服务



## 中国电子口岸

### 企业专用

如果您要修改IC卡的口令, 请按如下步骤操作:

1. 输入旧口令

2. 输入新口令

3. 确认新口令

确认修改

本地软件最近  
更新日期  
(20041209)

本地软件更新

请选择您要进入的子系统

[身份认证管理](#)

[舱单申报](#)

[转关申报](#)

[加工贸易](#)

[出口收汇](#)

[减免税申报](#)

[报关申报](#)

[出口退税](#)

[网上支付](#)

[汽车证明](#)

[制卡发卡](#)

[出口加工区](#)

[上网卡注册](#)

[ATA单证册](#)

[快件管理](#)

[增值税管理](#)

[小型船舶](#)

[电子帐册](#)

[网上保险](#)

[公路口岸](#)

[进口付汇](#)



# 中国电子口岸 CHINA E-PORT

Input interface for an ordinary  
Customs declaration form

**中国电子口岸--报关行专用版**

报关单录入/申报(1) 转关运输提前报关录入/申报(2) 清单录入/申报(3) 单据修改(4) 查询/打印(5) 业务统计(6) 功能选择(7)

新增(N) 修改(M) 复制(O) 删除(D) 暂存(S) 打印(P) 上载(U) 申报(R) 批量申报(B)

### 报关单录入/申报(进口)——未暂存状态

申报地海关  录入单位  操作员

统一编号		预录入编号	
海关编号		进口口岸	十八里店
备案号		合同协议号	
进口日期	20030704	申报日期	
经营单位		运输方式	江海运输
收货单位		运输工具名称	
申报单位		航次号	
提运单号		监管方式	对台贸易
		征免性质	一般征税
		征税比例	
纳税单位		许可证号	
起运国(地区)		装货港	
		境内目的地	东城区
批准文号		成交方式	CIF
运费		保费	
		杂费	
件数		包装种类	
		毛重(KG)	
		净重(KG)	
集装箱号		随附单据	
报关单类型	有纸报关	备注	

NO	商品编号	备案序号	商品名称	规格	原产地	数量	单位	币制	总价	征免
商品序号	1	备案序号	商品编号	附加编号						
商品名称			规格型号							
成交数量		成交单位	成交单价		成交总价		币制	港币		
法定数量		法定单位	版本号		货号		用途	货样		
第二数量		第二单位	原产地	亚洲	征免	照章征税				

集装箱号	规格	自重(KG)

集装箱号   
 集装箱规格   
 集装箱自重(KG)

代码	随附单证编号

随附单证代码   
 随附单证编号

关联报关单	<input type="text"/>
关联备案	<input type="text"/>
监管仓号	<input type="text"/>
货场代码	<input type="text"/>

报关员   
 联系方式

输入9位预录入编号。输入后不允许修改



## ❖ History

## ❖ Status Quo

↪ Scale

↪ Typical application: E-Port

↪ Other major applications

## ❖ Importance of application of IT in China Customs

## ❖ H2010 Project

# Major Application System---E-Customs



**It is a Customs management information system covering all the business functions of nationwide Customs which connects GACC departments with regional Customs and connects different regional Customs, characterized by networked clearance operations and smart cargo flow control. In 1998, starting from clearance reform, we began the first step of building a modern Customs regime and rolled out the application of clearance management system (H883 version 5.0). E-Customs basically came to its shape. In 2003, focusing on risk management, we began the second step of building a modern Customs regime through some pilot projects and the rolling out of the H2000 clearance management system. E-Customs grew to a mature stage.**



# What has E-Customs realized?

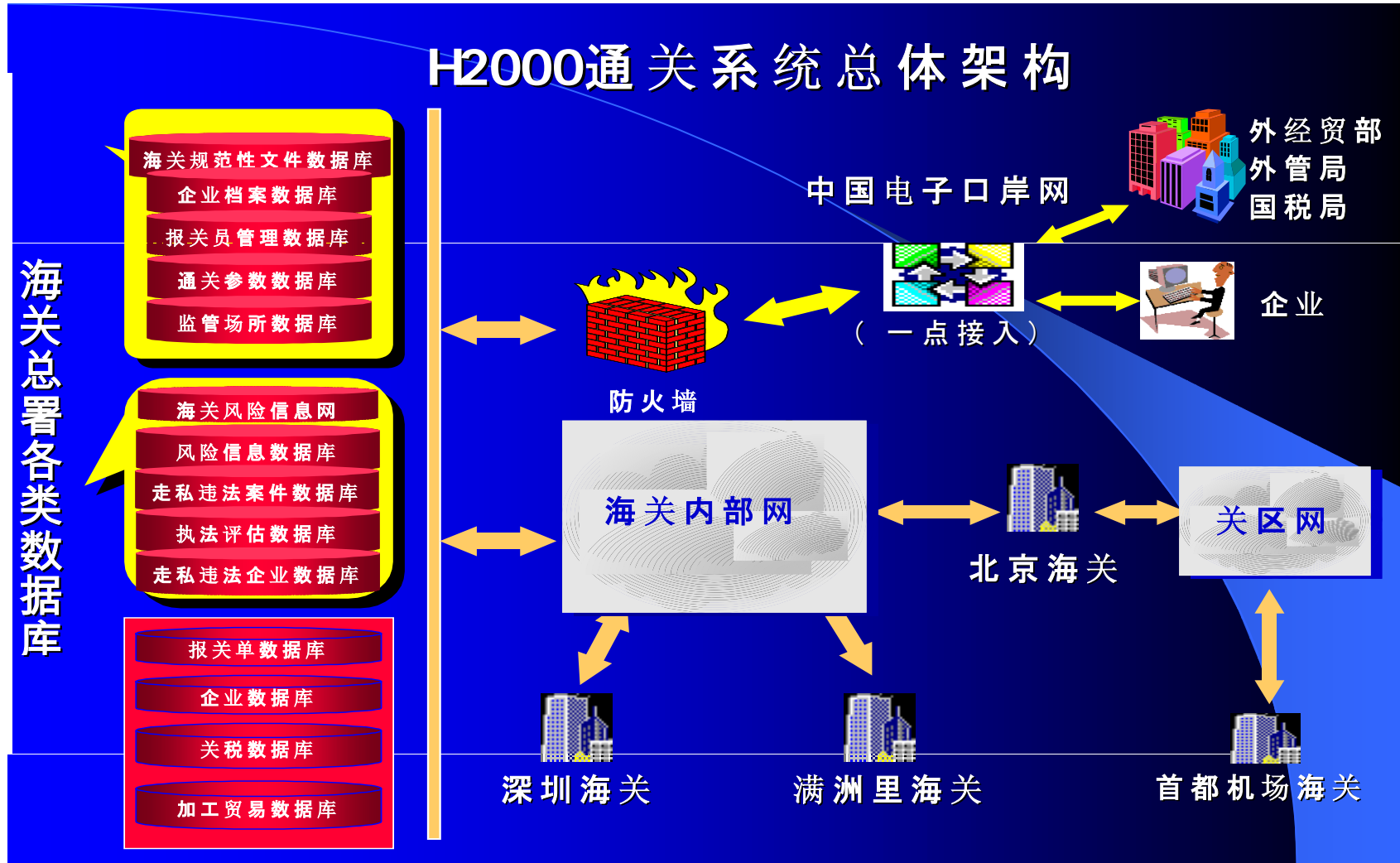


## 1. Networked clearance operations across China Customs

Utilizing PSTN, we established a three-tier VPN to connect GACC, 46 regional Customs subordinates under GACC, and over 700 operational sites. This helped realize the networked applications among the different links of a clearance site, between operational sites and regional Customs, and among different regional Customs. The networking of the different links of an operational site formed an informatized operational procedure to ensure interactions as well as checks and balances among the links. The networking of operational sites and regional Customs well combined the computerized automatic document inspection and the concentrated document inspection done manually for screened problematic ones, and enhanced unified and standardized clearance management of various operational sites by the regional Customs. The networking among different regional Customs made cross-customs data sharing and networked verification a reality, which addresses, from the root, the problems of falsified documents, falsified licenses, falsified stamps and other smuggling activities through preemptive prevention.

# Core of E-Customs

## --H2000 Clearance System



# Characteristics of H2000 System —Centralized Databank



- ❖ **Data recorded are shared across China Customs**
  - contract of bonded operations**
  - means of transport**
  - import/export manifests**
  - importers/exporters**
  - permits, licenses, certificate**
  - companies engaging in processing trade**
  - table of duty reliefs**
  - risk information**
- ❖ **Raised clearance efficiency, and reduced data transmission requirements**
- ❖ **Raised the accuracy of data, and reduced data redundancies**
- ❖ **GACC can have real-time access to data on import/exports across the country**

# Safety— Safety Design of the H2000 System

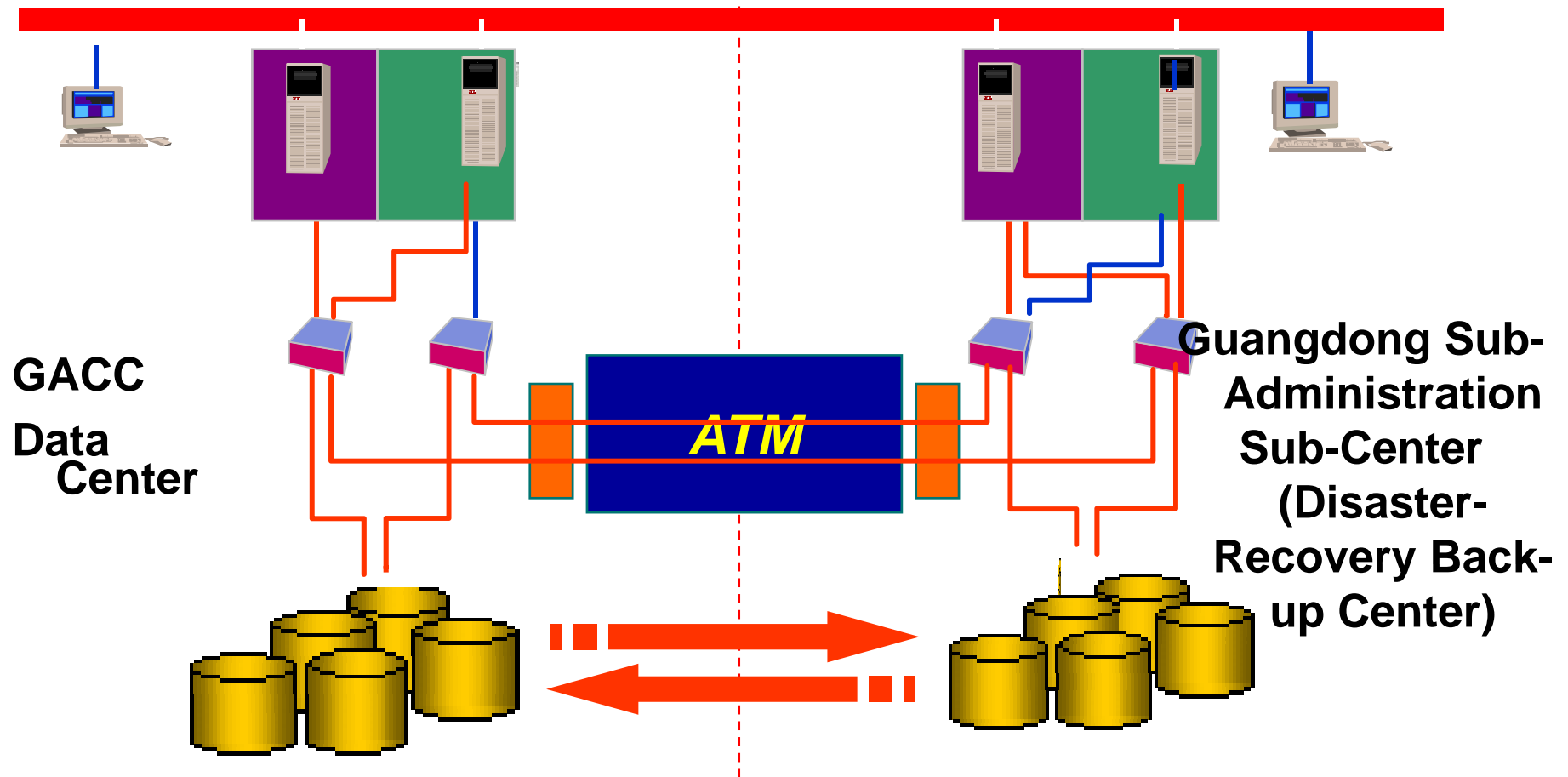


- ❖ ID reading
- ❖ Digital signature
- ❖ Data encryption
- ❖ System audit
- ❖ Network safety
  - ⌘ Firewalls
  - ⌘ Monitoring & Testing



# Highly Reliable

## —Data Center and Disaster-Recovery Back-up Center



# Benefits of H2000 System



## ❖ Economic

- ↪ Good for raising clearance efficiency
- ↪ Good for reducing trading costs
- ↪ Good for increasing national fiscal revenue
- ↪ Good for improving the economic order at ports

## ❖ Social

- ↪ H2000's rolling out is a milestone in China Customs' informatization drive
- ↪ H2000's rolling out is a creative move in China's informatization drive
- ↪ H2000's rolling out will promote reforms of Customs operations and management
- ↪ H2000's rolling out will make Customs operations more unified and standardized

# Essential Sub-Systems of H2000 System



- ❖ **At present, under H2000 System, there are 35 essential sub-systems**
  - ↪ **GACC parameters maintenance, local parameters maintenance, authorized management**
  - ↪ **advance input into the system, public services**
  - ↪ **document inspection centers, on-site operations, proceeding management, clearance management, manifest management, risk management, unified management of transit between different Customs houses**
  - ↪ **enterprise management, license and permit management, duty relief management, vessel tonnage tax management, case management, confiscated income management, processing trade management, trade statistics compilation, forex payment verification and write-off, vehicle certificates**



中国海关

H2000通关管理系统:广州海关- (接单管理)



文件(F) 编辑(E) 功能(U) 视图(V) 帮助(H)



外汇核销单  
公共服务  
现场...

现场接单管理系统

张继雷/511098/广州石牌 5130

现场接单管理系统



- 接单管理
- 税费管理
- 查验管理
- 查验派...
- 保金保...

- 现场接单审核
- 现场业务综合处理
- 现场业务一体化处理
- 查验通知单打印
- 接单统计
- 报关单查询
- 报关单打印

- 现场验估反馈
- 现场审单
- 报关单修改
- 现场值班审单
- 报关单修改申请
- 报关单删除申请
- 报关单删改申请查询
- 后补征免税证明
- 担保或无纸报关监控

贸易统计

准备...

插入 数字 大写



H2000通关管...

EN

10:47



- 总署参...
- 地方关...
- 选择查...
- 风险管理
- 企业管理
- 加工贸...
- 船舶吨...
- 舱单管理
- 统一版转关
- 预录入
- 公共服务
- 审单中心
- 现场...
- 接单管理
- 税费打印
- 税费管理
- 现场查...
- 情报式...
- 汽车证明书
- 电子手...
- 电子帐...
- 决策支...
- 国际合作

**现场接单审核**

**接单**

- 审单结果显示
- 修改记录显示
- 企业信息显示
- 布控信息显示
- 布控处理输入
- 布控指令输入
- 舱单信息显示
- 许可证显示
- 减免税显示
- 手册信息显示
- 帐册信息显示
- 通关单显示
- 价格参数显示
- 统计价控显示
- 转关单显示
- 企业资质显示
- 原产地显示
- 港澳DFA显示
- 环节备注输入
- 环保证件显示
- 风险信息显示
- 物流账册
- 国际合作
- 反倾销
- 保证金显示
- 查验通知单
- 打印

👤 法条0601/980071/上海关校 9800

报关单输入  
 报关单号码输入:

海关编号	980020081000002341	申报号	980020081000002341	备案号		申报口岸	上海关校
申报单位	杭州三和食品有限公司	3301931329	申报日期	2008/10/29	进口口岸	嘉关乍办	
经营单位	杭州三和食品有限公司	3301931329	合资	进口日期	2008/10/29	起运地	中国香港
收货单位	杭州三和食品有限公司	3301931329	货主地区	杭州其他	装货港	香港	
许可证号		运输方式	其它运输	监管方式	一般贸易	成交方式	CIF
结汇证号		合同号		件数			100
随附单据							210
监管仓号							200

**审单结果显示**

流转信息	状态数值	状态描述
!	0056	未输入运输工具及代码
	0065	未输入提运单号
	0093	经营单位为一般通关企业
!	0113	申报单位为一般通关企业
	0133	非“进料非对口”不应输入“征税比”
	0743	经营单位为A类企业
	0021	进口标志正确
	0171	优先决策或状态决策决策出通道结果
	1	优先决策第0003号决策出接单交单:接单通道

总价	成交币制	征免	规格
200.00	110	1	

商品编号	392	申报数量	100	法定单位	千克	海关单价	2	海关总价	200	用途	其它内销
第二数量		第二单位		备案序号		版本号		原产地	中国香港	征免	照章征税

该报关单10天前已审结

确认  
拒绝  
放弃

# What has E-Customs realized?



## 2. Smart Cargo Flow Control

Cargo Flow Control System is based on the clearance management system. It has adopted state-of-the-art monitoring and inspection technologies and computer network technologies to integrate container inspection equipment, GPS, electronic weigh bridges, electronic entry/exit gates, electronic vehicle plates, video surveillance and other relevant technologies and equipment into one single complex, which can consolidate the cargo flow information received from the risk management platform, E-Port and EDI centers to establish E-ledger and conduct networked matching and automated processing of cargo flow information

2010-6-29

collected on site.

# What has E-Customs realized?



## 2. Smart Cargo Flow Control

The Cargo Flow Control System mainly includes the following sub-systems: subsystem on recordation of transportation companies, means of transport, their staff, sub-system on recordation of Customs control premises, subsystem on management of international means of transport, sub-system on container management, sub-system on entry/exit gate networking and control, sub-system on management of small vessels of travelling to and fro Hong Kong SAR and Macao SAR, etc.. Its development started in 1998. After 2000, it was put into use in some Customs houses and gradually realized the computerized management and whole-process monitoring of clearance of means of transport and goods. By the end of 2006, import containers controlled utilizing this system exceeded 90%.





2010-6-29

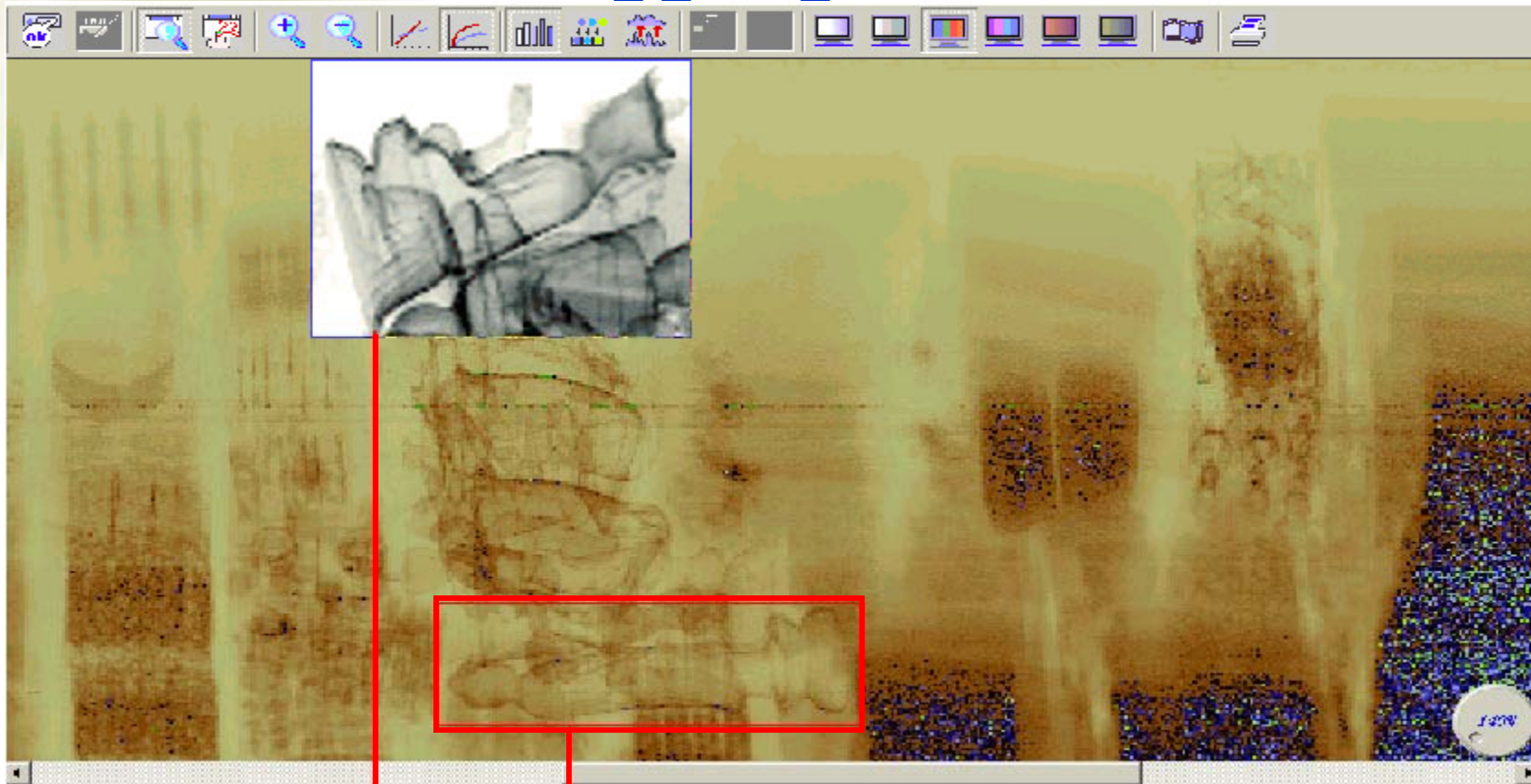


2010-6-29





# Guangzhou Sanshan Customs detected a case of Buddha figure smuggling

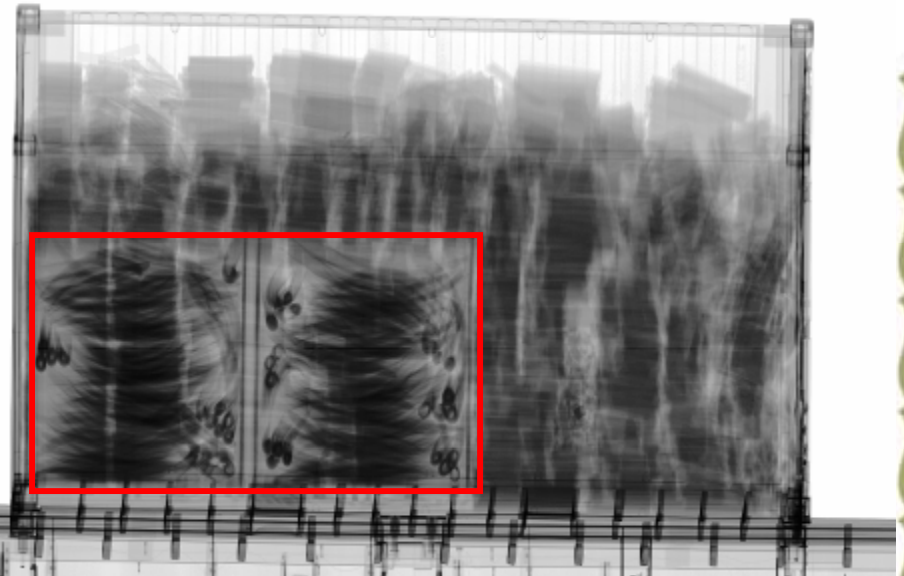


**Buddha figure smuggled**

2010-6-29



# Qingdao Dagang Customs: ivory smuggling case



# Major Applications: E-GACC



**This is a virtual information system built in light of the vertical management structure of China Customs. Based on E-Customs, it helps realize digitized operational monitoring & analysis and auxiliary decision making. It enables GACC and the regional Customs houses to have more scientific functional management and day-to-day administration. It comprises a confidential intranet (OA), an operational extranet, and the Internet as well as the different applications at the three levels of network.**



# E-GACC

**Development started in 2001. Now, a total of 5 key applications: risk management platform, sub-system on import/export statistics analysis & early warning, sub-system on enforcement evaluation, sub-system on tariff monitoring & analysis, and the confidential office automation (OA) sub-system.**

**Applications of E-GACC have provided scientific and effective means for GACC and regional customs houses for operational monitoring & analysis and auxiliary decision making. Very helpful.**

# E-GACC: Risk Management Platform



## Data Applications

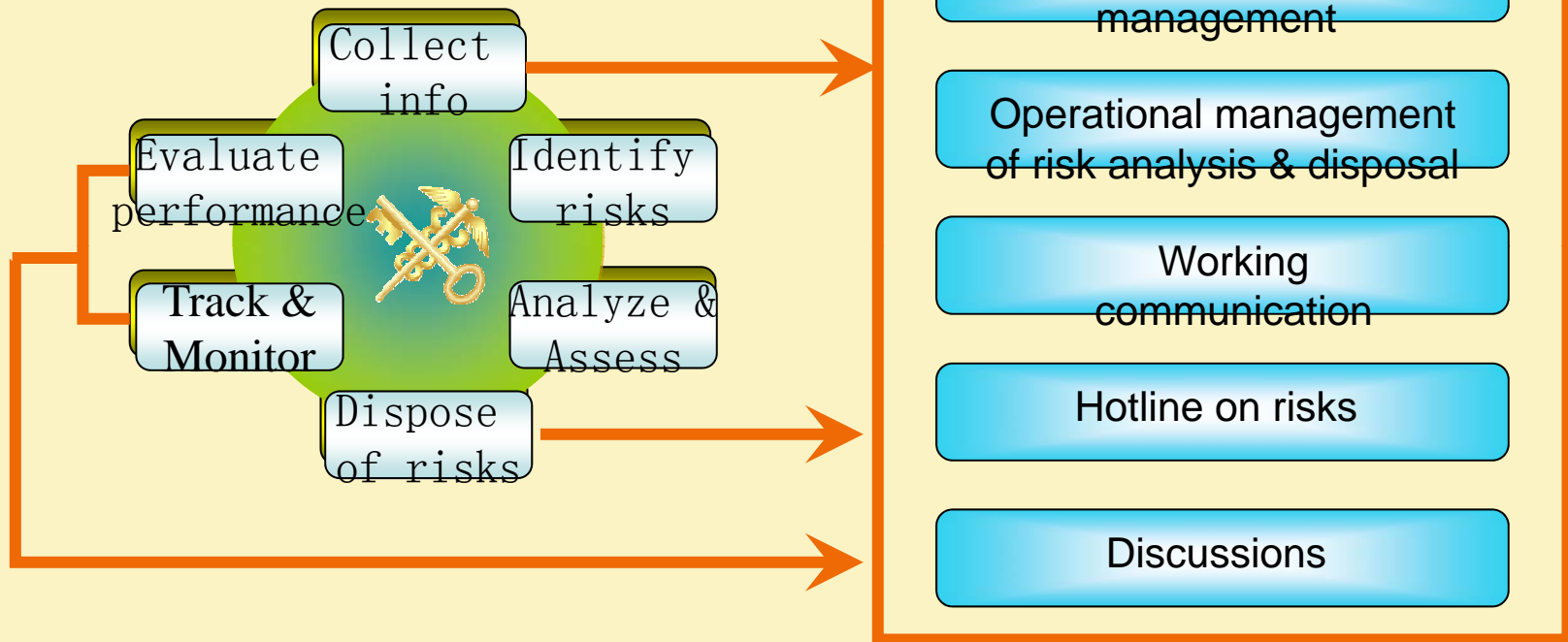
The risk platform collects various data, which are then presented in forms of reporting, enquiries, multi-dimensional demonstration. Through simulating human experience, it provides users with tools for knowledge and analysis of operations and risks.

## Information Management

Through Customs intranet, it integrates the functions of risk analysis coordination, risk disposal coordination and information exchange into a single platform for unified and shared risk management nationwide across different Customs districts.

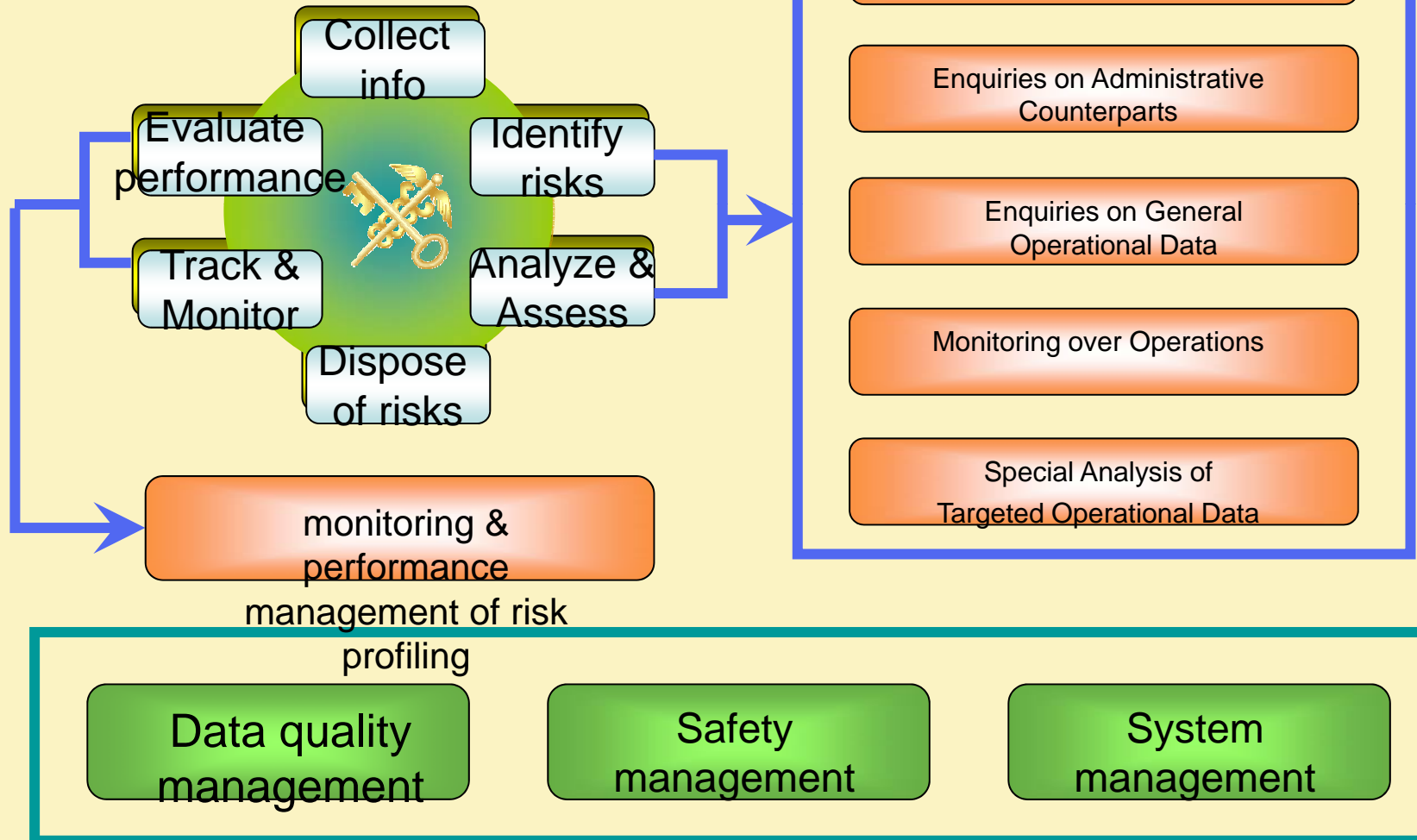


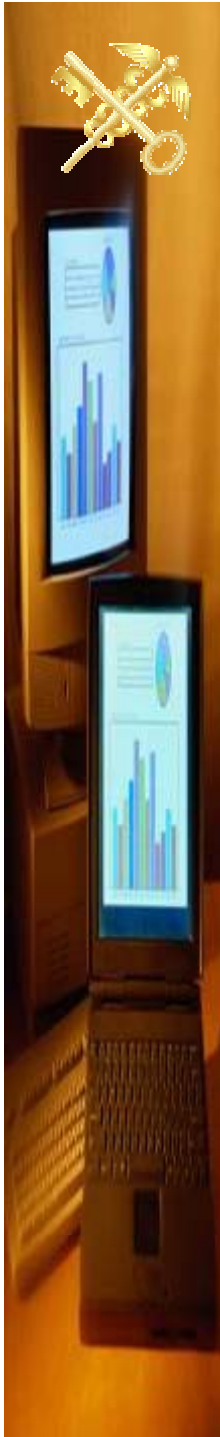
## Functional Design of Information Management Module





## Functional Design of Data Application Module





- **Risk platform realized risk management information and data exchange and sharing within China Customs. It is a very good platform for different departments of Customs to collaborate and exchange information with each other for risk management mutual assistance. At the same time, it also boasts of a powerful function of data enquiries, analysis and processing, which enables Customs officers to have timely monitoring of the import/export situations focusing on enterprises or on commodities to identify the potential risks.**
- **Incomplete statistics showed, in 2006 alone, through the risk management platform, China Customs detected 14,557 cases of violations, with a value of 18.583 billion CNY, involving 1.868 billion CNY of duties and taxes. Thanks to the platform, 836 million CNY of duties and taxes evaded and 114 million CNY of fines were collected. The platform can also reduce the blindness in on-site inspections, facilitate clearance for compliant enterprises, further standardize Customs operations and management, render operations more effective, and prevent corruption.**



# E-GACC: Customs E-governance

---

- **Confidential intranet (OA)**
- **E-governance extranet**



# Homepage of China Customs Portal

2010年5月13日 星期四

简体中文

繁体中文

English

海关电邮

使用帮助

用户注册

用户登录

请输入关键字

搜索



## 中华人民共和国海关总署

General Administration of Customs of the People's Republic of China

公开:	总署概况	海关要闻	各关动态	各关概况	专题聚焦	图片新闻	网上直播	在线访谈	口岸管理
统计:	统计快讯	统计数据	统计分析	监测报表	商品预警	监测报告	关区统计	统计资讯	访问分析
服务:	行政许可	办事指南	下载中心	电子口岸	公务员	报关员资格	报关员岗位考核	知识产权	境外通关
查询:	通关状态	舱单信息	报关员记分	企业情况	商品信息	通关参数	归类信息	化验信息	视频点播



在线访谈: 围绕中心 服务大局 创新海关宣传思想文化工作(4月28日)

“境外通关指南”栏目已添加

### 信息公开

公开规定	公开指南
申请公开	公开目录



查获两千余台侵权汽车空调压缩机

### 海关新闻

专题专栏 在线访谈 媒体报道 图片新闻

- 海关总署: 前4个月外贸增长超四成 4月份呈现小额贸易顺... [2010-05-10]
- 海关总署: 出措施、送物资, 海关火速支援玉树救灾 [2010-04-23]
- 海关总署: 捐款捐物抗震救灾 [2010-04-22]
- 海关总署: 海关开设进境救灾物资绿色通道 [2010-04-16]
- 海关总署: 中哈海关确定合作重点 [2010-04-16]
- 重庆海关: 首个内陆保税港区顺利通过国家验收 [2010-05-12]
- 上海海关: 黄金面具、黄金泪滴相继进境(图) [2010-05-12]
- 厦门海关: 截获千余废旧电池(图) [2010-05-12]
- 成都海关: 参与汶川灾后重建两周年记 [2010-05-12]
- 黄埔海关: 保护地球在行动(图) [2010-05-11]

### 网上服务大厅

### 境外通关指南

### 中新农产品专栏

### 今日中国海关

交流互动 订阅服务

### 海关法规

更多信息 >>

### 署令公告

更多信息 >>

海关总署公告2010年第29号(关于对原产于美国的进

[2010-04-29]

海关总署令 >>

海关总署公告 >>



# 海关政务办公系统

规范 高效

仿生化 模块化

全部应用



工作台



吴江, 您好!

个人信息

个人设置

个人收藏

待办事项 (1)

已办事项

授权委派

收文管理 >>

发文管理 >>

签报管理 >>

督办管理 >>

政务信息 >>

文书档案 >>

系统管理 >>

已办箱

应用程序

查询

刷新

删除

全选

任务类型

全部

标题	应用程序	目的	来自于	时间	选定
签批提醒:《关于购买手提电脑的申请》	签报管理	签批提醒	肖建国	2010-05-13 07:26	<input type="checkbox"/>
关于成立上海海关学院等级保护领导小组的通知	发文管理	部门审核	刘继进	2010-05-12 11:17	
关于购买手提电脑的申请	签报管理	会签部门批办	陈荣	2010-05-12 10:36	
!! 吴江副处长对文件《海关总署办公厅关于举办涉密办公网分级保护整改实施工作培训班的通知》的批示	收文管理	提醒	吴江	2010-05-11 14:33	<input type="checkbox"/>
!! 海关总署办公厅关于举办涉密办公网分级保护整改实施工作培训班的通知	收文管理	收文批办	陈荣	2010-05-11 14:33	
签批提醒:《关于成立上海海关学院等级保护领导小组的请示》	签报管理	签批提醒	陈晖	2010-05-10 08:34	<input type="checkbox"/>
!! 送阅文件《海关总署关于召开海关总署2010年巡视工作电视电话会议的通知》	收文管理	文件送阅	毛成功	2010-05-07 14:36	<input type="checkbox"/>
!! 吴江副处长对文件《海关总署关于召开海关总署2010年巡视工作电视电话会议的通知》的批示	收文管理	提醒	吴江	2010-05-07 14:57	<input type="checkbox"/>
!! 海关总署关于召开海关总署2010年巡视工作电视电话会议的通知	收文管理	收文批办	陈荣	2010-05-07 14:57	
签批提醒:《关于申报信息系统安全等级保护备案表的请示》	签报管理	签批提醒	陈晖	2010-05-06 09:28	<input type="checkbox"/>
吴江副处长对文件《上海市教育委员会关于做好市教委系统2010年上海市科学技术奖推荐工作的通知》的批示	收文管理	提醒	吴江	2010-05-06 08:16	<input type="checkbox"/>
上海市教育委员会关于做好市教委系统2010年上海市科学技术奖推荐工作的通知	收文管理	收文批办	陈荣	2010-05-06 08:16	
签批提醒:《关于将“周界电子围栏及配套工程”作为“技防二期项目延续”的请示》	签报管理	签批提醒	肖建国	2010-05-05 11:29	<input type="checkbox"/>
关于成立上海海关学院等级保护领导小组的请示	签报管理	签报人	刘继进	2010-05-06 08:15	
关于申报信息系统安全等级保护备案表的请示	签报管理	签报人	刘继进	2010-04-28 11:02	
吴江副处长对文件《科技司关于通报海关技术协作区2009年工作总结的通知》的批示	收文管理	提醒	吴江	2010-04-27 10:29	<input type="checkbox"/>



## **E-GACC: Tariff Analysis & Monitoring Sub-System**

- ◆ **It performs the following tasks:**
  - ◆ **timely compilation of statistics on tariff, processing trade and bonded operations**
  - ◆ **Timely knowledge of trade mix and commodity mix for multi-dimensional analysis of tariff collection situations; monitoring the operations and enforcement at various links of duty collection**
  - ◆ **Overall evaluation of duty collection by Customs for improvement of enforcement; provide risk information on clearance, examination & approval, and management;**
  - ◆ **Promote standardization of various operations, and provide primary-line information on import/export duties/taxes, commodity mix, pricing level, trade volume, etc. for economic policy-making of the State.**



## **E-GACC: Customs Enforcement Evaluation Sub-System**

- **This system has adopted advanced statistics analysis and data exploration technologies. It can help with decision making through monitoring & supervising Customs enforcement effectiveness & efficiency and the overall risk indicators. It conducts overall analysis of Customs clearance data and data fed by other agencies and international partners. It conducts dynamic analysis & monitoring of the implementation of trade measures, duty collection quality, cargo flow control, processing trade control, etc. at different customs houses, and makes a quantitative assessment of their administrative enforcement, operations and management, to identify problems and signal an early warning.**
- **Specific functions of the system: evaluation of duty collection situations, price levels, risks, processing trade management, reasonableness of cargo flow directions; analysis & early warning concerning smuggling situations and trends; release and management of evaluation reports, etc.. Rolled out in 2001. By Aug. 2008, through tips given by this system, China Customs collected an additional amount of 970 million CNY duties and taxes, and detected 62 million CNY of evaded duties/taxes. The total amount involved in problems detected by the system reached 1.22 billion CNY.**



## ❖ History

## ❖ Status Quo

↪ Scale

↪ Typical application: E-Port

↪ Other major applications

## ❖ Importance of application of IT in China Customs

## ❖ H2010 Project

2010-6-29

61

# Importance of application of IT in China Customs



- ❖ Better clearance operations
- ❖ Better duty collection
- ❖ Enhanced control and anti-smuggling efforts to ensure normal economic order of import/export
- ❖ Higher clearance efficiency, lower trading costs, and enhanced competitive edge on the international market
- ❖ Better cross-cutting cooperation for improved management and services at ports
- ❖ Better statistics analysis for provision of better services for decision making and macro-control by the State
- ❖ Reduced corruption risks and higher level of integrity



## ❖ History

## ❖ Status Quo

↪ Scale

↪ Typical application: E-Port

↪ Other major applications

## ❖ Importance of application of IT in China Customs

## ❖ H2010 Project

# An Integrated Management System for a Modern Customs (H2010 Project)

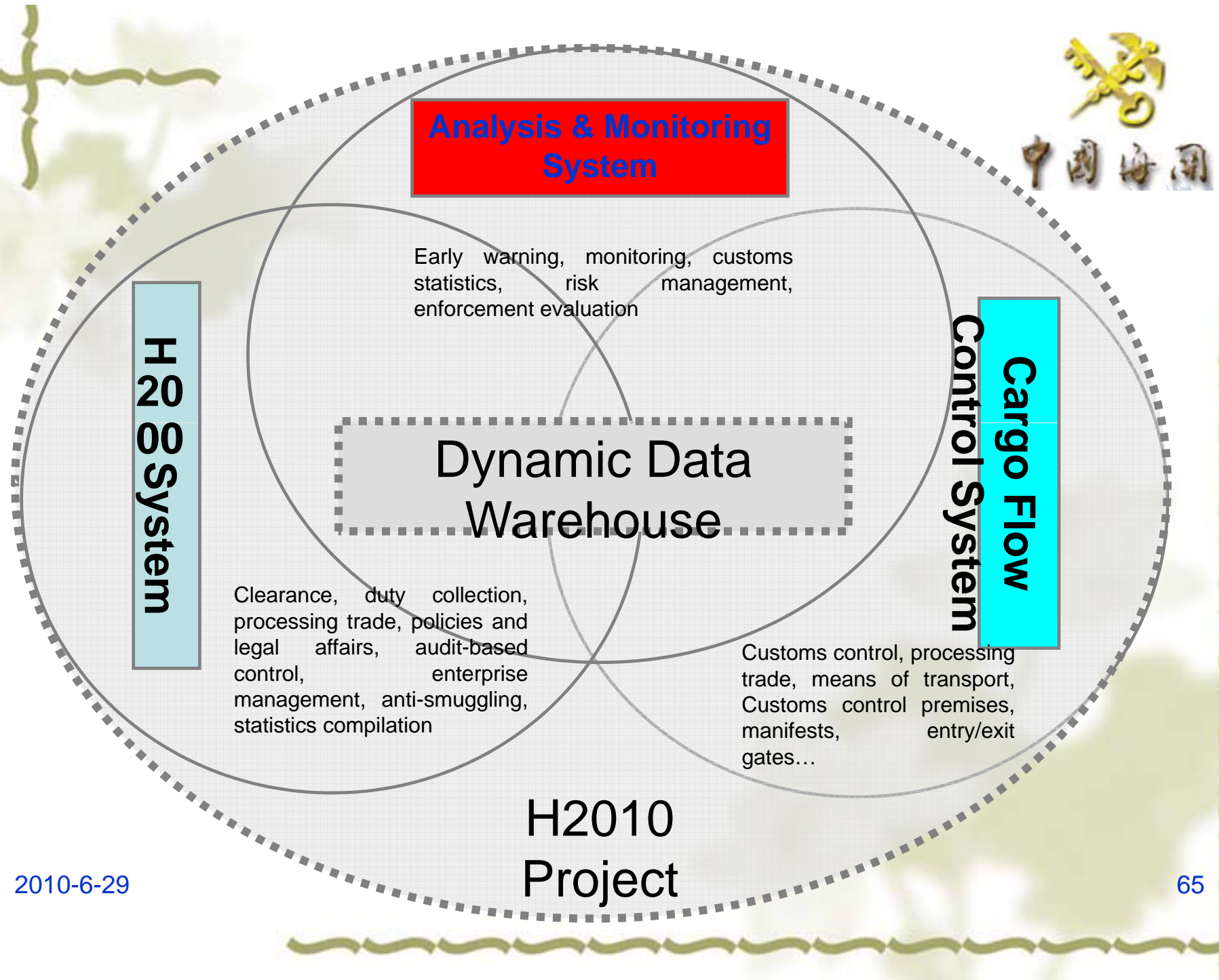


- ❖ In light of the requirements of changing situations, it is necessary to develop a new-generation computerized management system which can meet the needs of integrated Customs control while accommodating the needs of clearance management so that there is no lagging behind when the integrated Customs control framework is being built.
- ❖ Necessity and urgency for H2010 Project: development of integrated Customs control; non-traditional Customs functions and international cooperation; integration of Customs information systems; upgradation and development of modern ICT technologies.





中國海關



**Analysis & Monitoring System**

Early warning, monitoring, customs statistics, risk management, enforcement evaluation

**H20 System**

Clearance, duty collection, processing trade, policies and legal affairs, audit-based control, enterprise management, anti-smuggling, statistics compilation

**Cargo Flow Control System**

Customs control, processing trade, means of transport, Customs control premises, manifests, entry/exit gates...

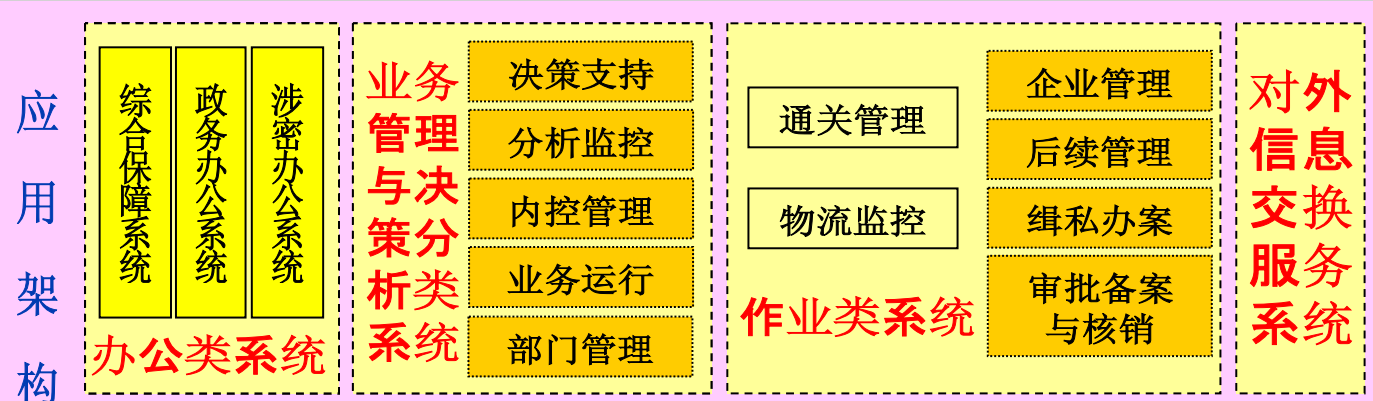
**Dynamic Data Warehouse**

**H2010 Project**

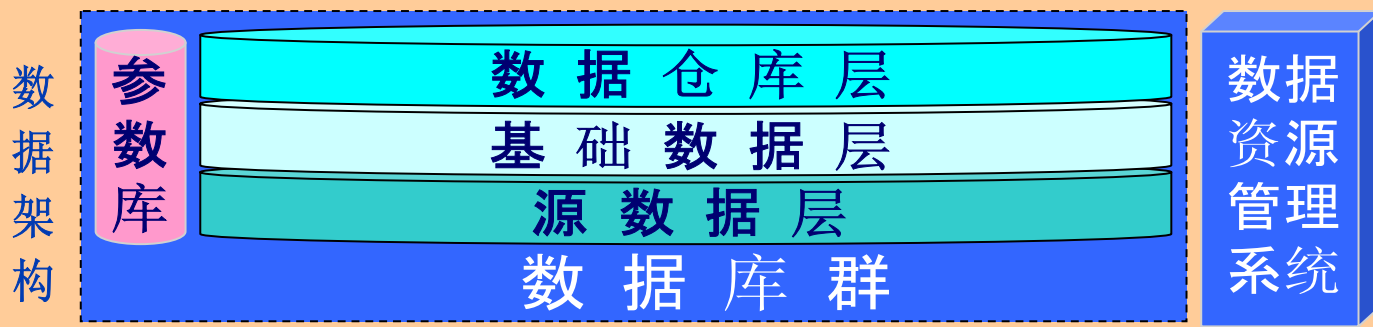
组织与管理

标准化体系

业务架构 组织结构 业务流程 业务功能



统一门户 统一认证 统一授权



技术架构 应用支撑平台 技术基础平台