

State Customs Inspectorate under the Government of the Kyrgyz Republic

JOINT CUSTOMS CONTROL – REALITY AND PERSPECTIVES

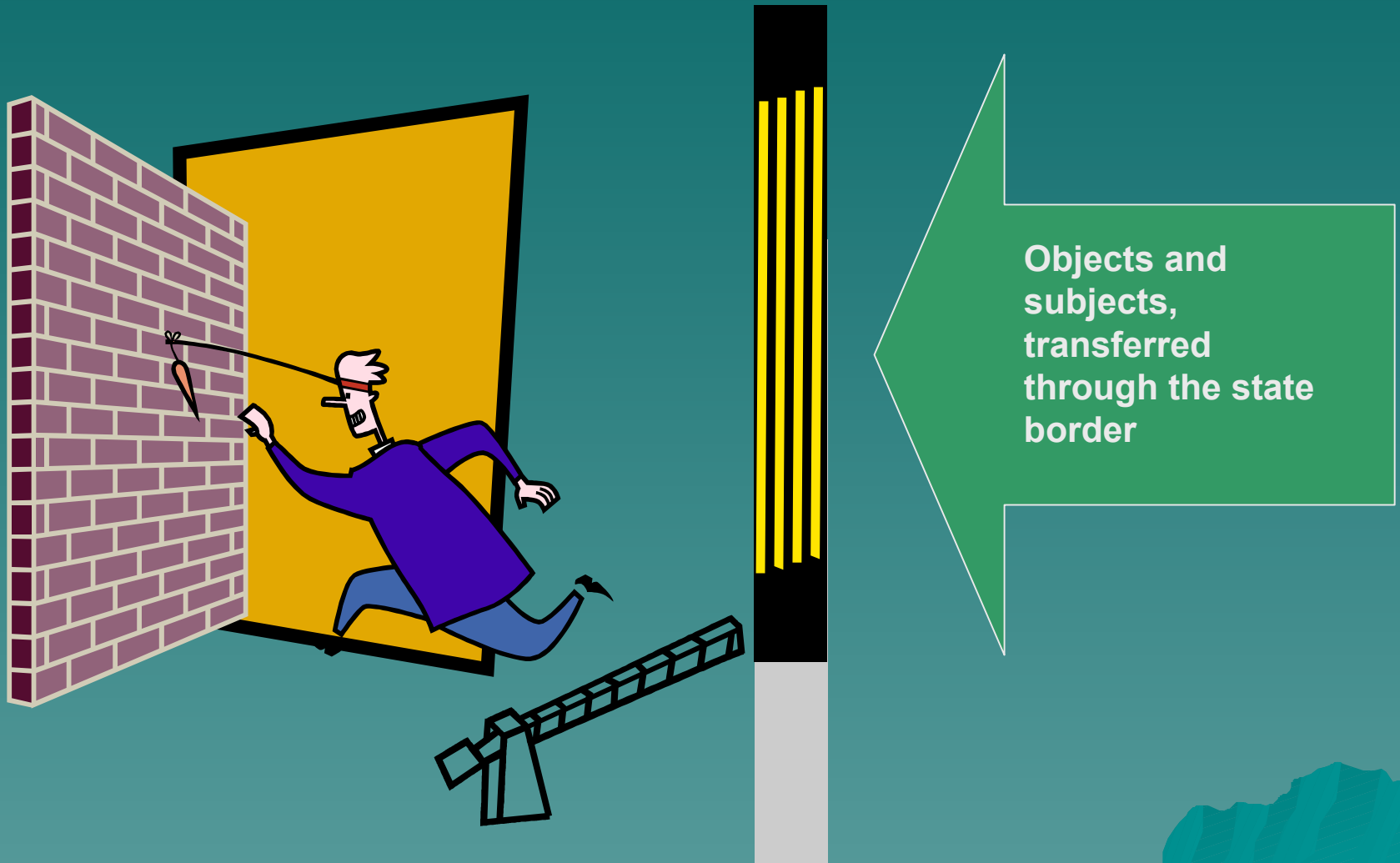


Bangkok - 2005

The views expressed in this paper are the views of the author and do not necessarily reflect the views or policies of the Asian Development Bank (ADB) or its Board of Directors, or the governments they represent. ADB does not guarantee the accuracy of the data included in this paper and accepts no responsibility for any consequences of their use. Terminology used may not necessarily be consistent with ADB official terms.

Frontier

State border control



What is the state border control\processing?

Border control



Customs control



Veterinary control



Phytosanitary control



Transport control



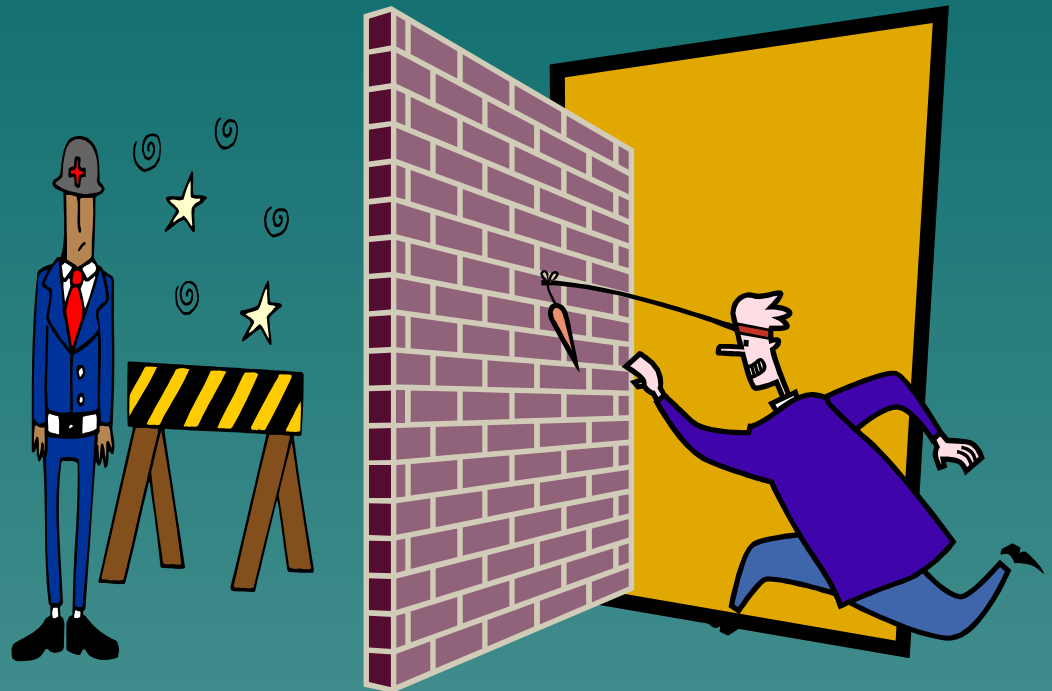
Radiation control



Ecological control



Etc.



Subjects of transfer through the state border

Objects and
subjects,
transferred
through the state
border



- ✓ For commercial aims (total trade)
- ✓ Not for commercial aims (not trade turnover)...




- ✓ As goods
- ✓ Handle transportation
- ✓ Personal transport...



- ✓ Individuals
- ✓ Equipage of means of transport
- ...


Flows through the state border

- ✓ Crosswalk for pedestrians
 - ✓ Crosswalk for pedestrians on a personal transport
 - ✓ Crosswalk for pedestrians on a public transport
 - ✓ Transfer of empty motor transport/surplus transportation
 - ✓ Transfer of goods under the TIR procedure
 - ✓ Transfer of goods by freight transport
 - ✓ Transfer of goods in capacity of hand luggage...
- 
- A stylized, dark teal silhouette of a mountain range is positioned in the bottom right corner of the slide, adding a decorative element to the background.


Possible directions on the way of simplification of the state border crossing

- ◆ Creation of a varied technological schemas in accordance with the aims and tasks of the state control
- ◆ Risks analyze – a simplified control is virtual, when a risk of possible violations of provisions of a national legislation is absent or minimized
- ◆ Management of flow movement through a border by most optimal way using different technological schemas
- ◆ Creation of common information data bases on the state border crossing points
- ◆ Mutual recognition of results of the state control in a legislative order
- ◆ Preparation and signing of interagency and intergovernmental agreements
- ◆ Conducting of the joint control
- ◆ Another possibilities

ADB's assistance in a case study on simplification of procedures by border crossing

- ◆ Under the assistance of the ADB starting from 2002 a set of seminars and meetings of working groups was conducted.
 - ◆ Researches within other Projects (TRACECA) on problems of simplification of procedures on border crossing points are studied.
 - ◆ Experience on joint control of France-Germany, Poland-Byelorussia and other countries is explored.
- 
- A stylized, dark teal mountain range graphic is located in the bottom right corner of the slide, extending from the right edge towards the center.


Efforts of customs services for optimization of the border crossing process

- ◆ Study of the state border crossing problems
 - ◆ Drafting of the intergovernmental agreement
 - ◆ Automation of customs services
 - ◆ Modernization of infrastructure
 - ◆ Data exchange
 - ◆ Conducting of the joint control
- 
- A stylized, layered mountain range graphic in shades of teal and blue, located in the bottom right corner of the slide.

Experiment on the joint control for:

- ◆ Preparation of the intergovernmental agreement
- ◆ Revelation of categories of goods, means of transport, individuals, unrelated to the risk category
- ◆ Approbation of possible technological schemas simplifying border crossing process
- ◆ Approbation of a separate elements of the joint control

Possibilities of application of the joint control by customs services on the first stage

- ◆ Surplus transportation
 - ◆ Pedestrian
 - ◆ Public transport
 - ◆ Transfer on personal transport
 - ◆ Transit transportation
 - ◆ On TIR procedure
- 
- A stylized, dark teal silhouette of a mountain range is positioned in the bottom right corner of the slide, extending from the right edge towards the center.

Existing problems:

Insufficient support of common pilot procedures on the part of other related agencies

Departmental interests of a large quantity of controlling authorities on the border

Perspective directions.

- ◆ Development of national concepts on interaction of different state controlling authorities
- ◆ Harmonization of national concepts on bilateral level

Thank you for the attention !

