

.....**CROSS-BORDER TRANSACTIONS**.....

ON THE FAST TRACK.....→

WCO Data Model & Single Window Environment



SP SAHU



World Customs Organization



Outline

This presentation covers the following:

I. Implementing a Single Window Environment

- Plotting readiness for a Single Window
- Priorities - Integrating with Customs Strategic Plan
- Single Window - What will be built?
- Business processes – locating the inter-agency exchanges

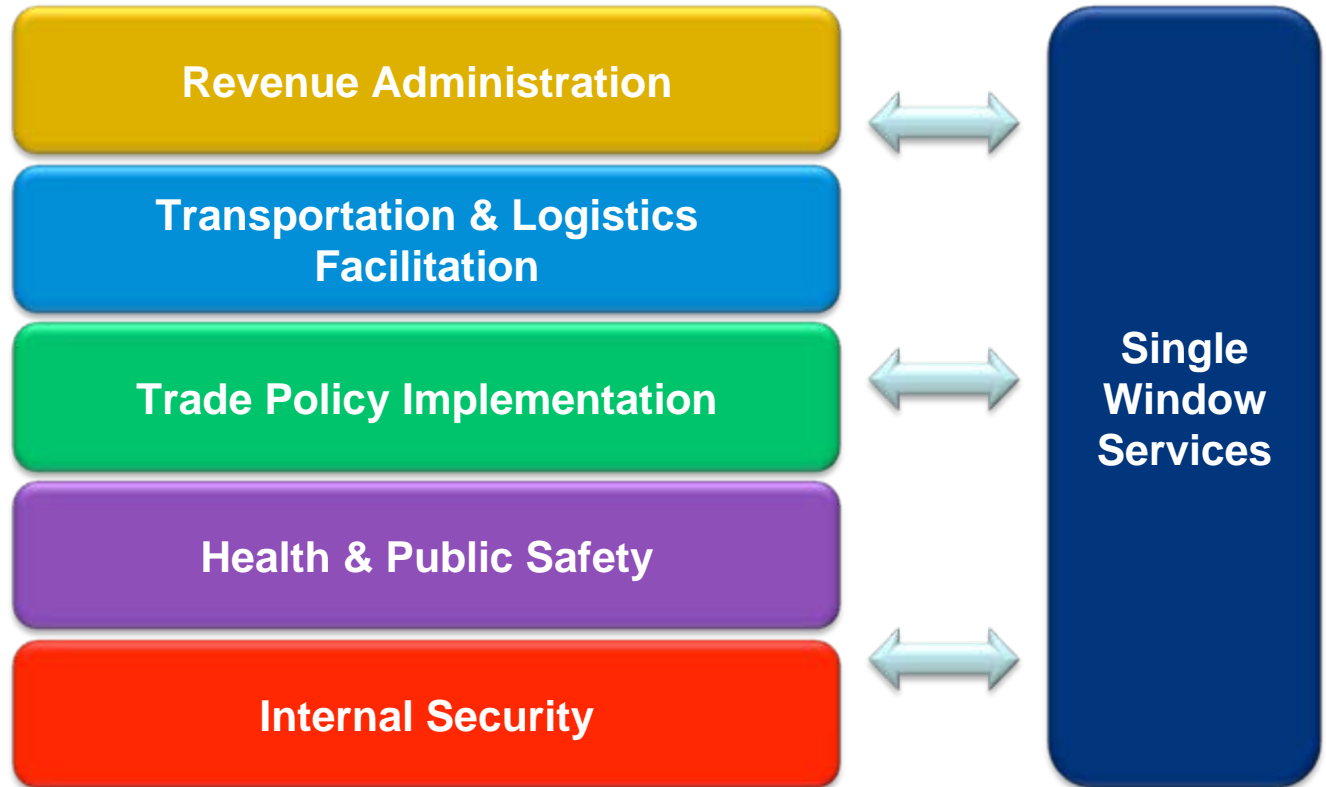
II. Single Window Data Harmonization

- Tools for functional assessment
- Tools for data harmonization





Customs Functions & Single Window Services



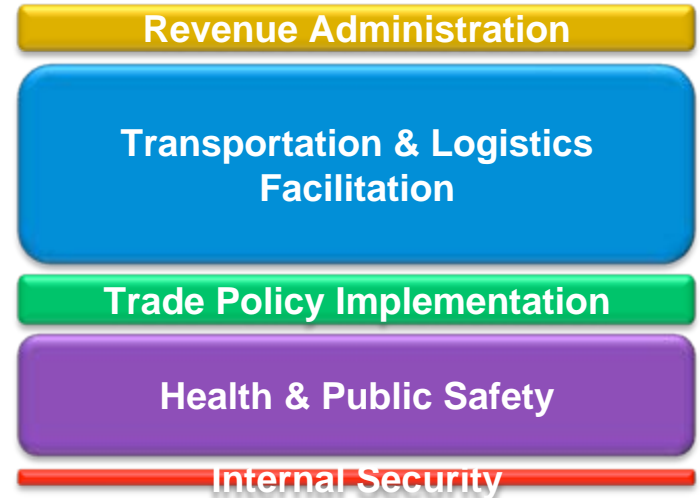
The choice of services for Single Window would depend on the national customs



What is the priority?



Country A



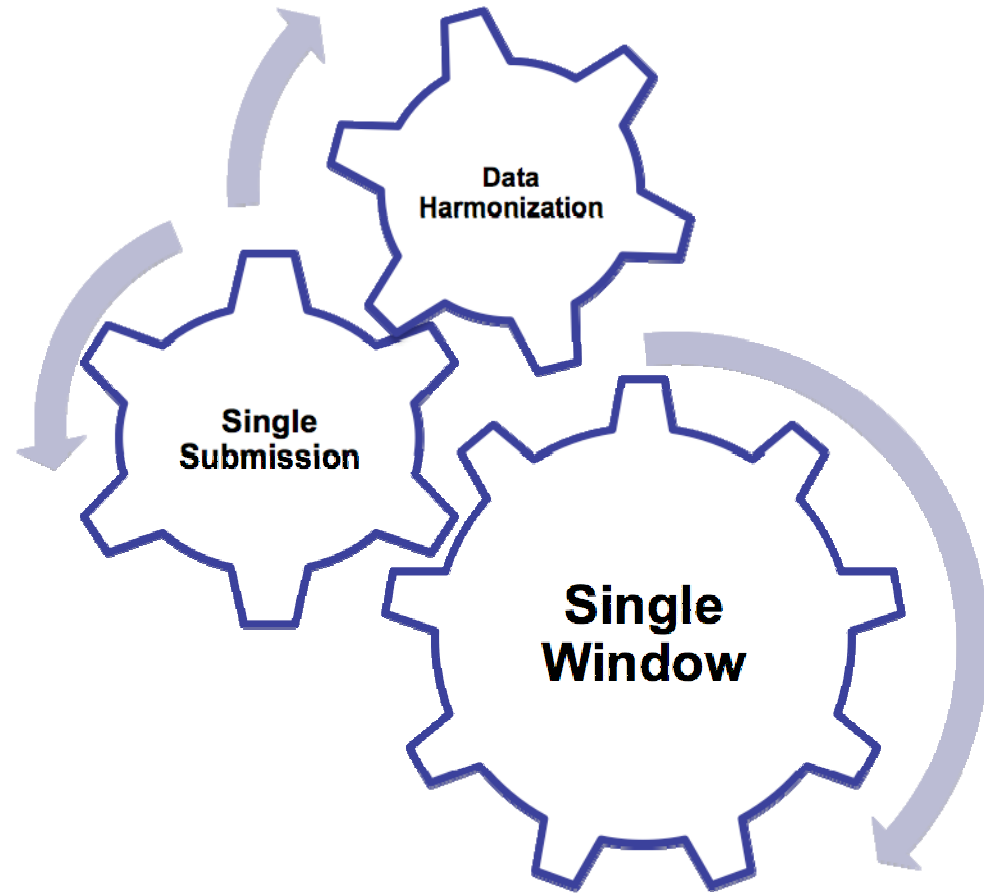
Country B

Coverage of Cross-border movements by subject & mode

Mode →	Air	Sea	Road	Rail
Goods				
Conveyances				
People				



A portal for single submission..



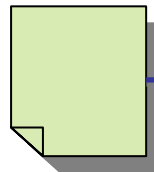
The most commonly accepted definition of Single Window is provided in UN/CEFACT Recommendation 33



Or a network of co-operating facilities?



Broker
Files declaration....



Which refers to
additional documents ..



Cross-border
Regulatory
Services



Transportation Documents



Trusted
Logistics
providers

Trade Documents



Trusted
B2B trade
networks

Payment Documents



Trusted
Payment
facilities

Certificates / Licenses/ Permits



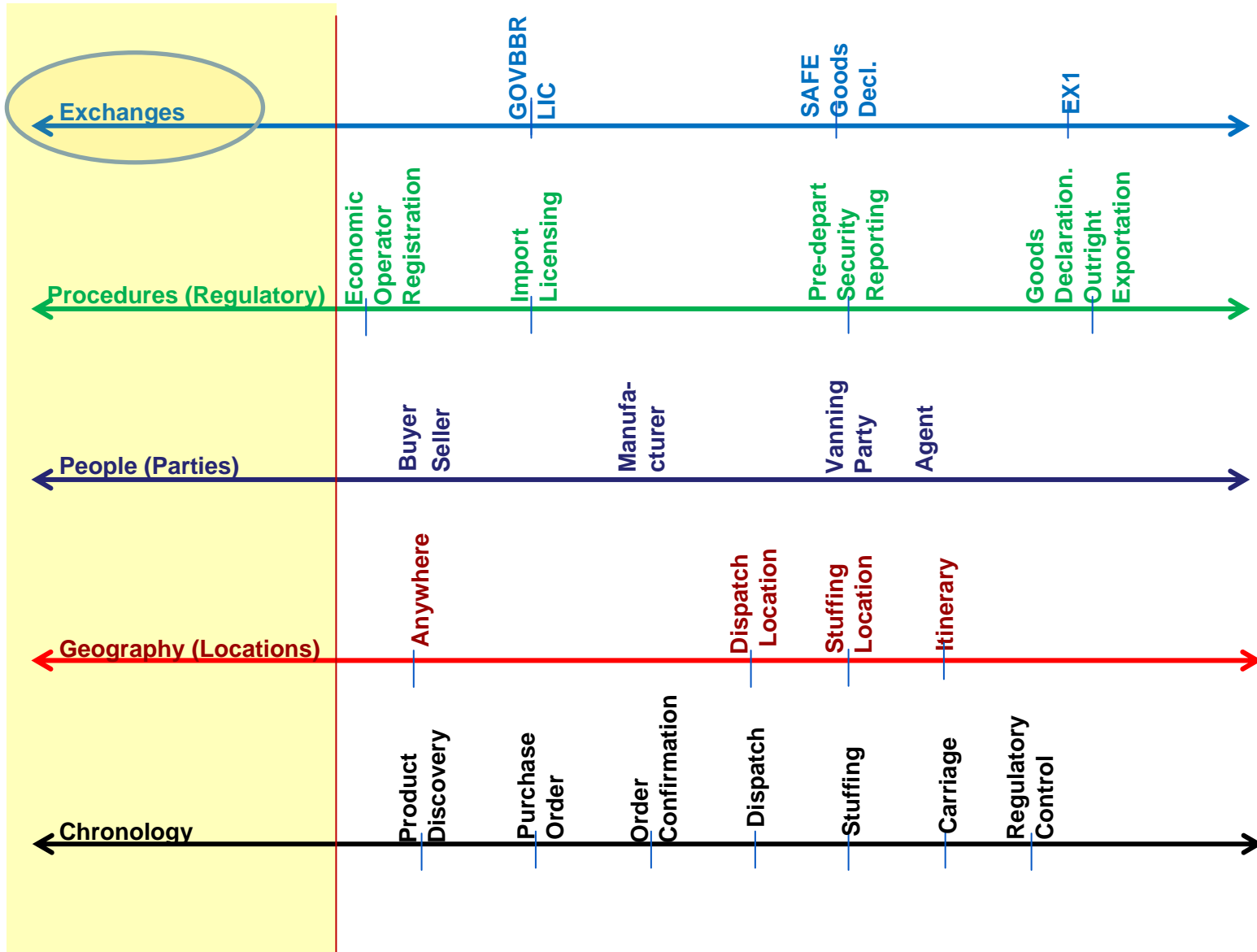
Trusted
Government
facilities

Secure repositories of “supporting” document



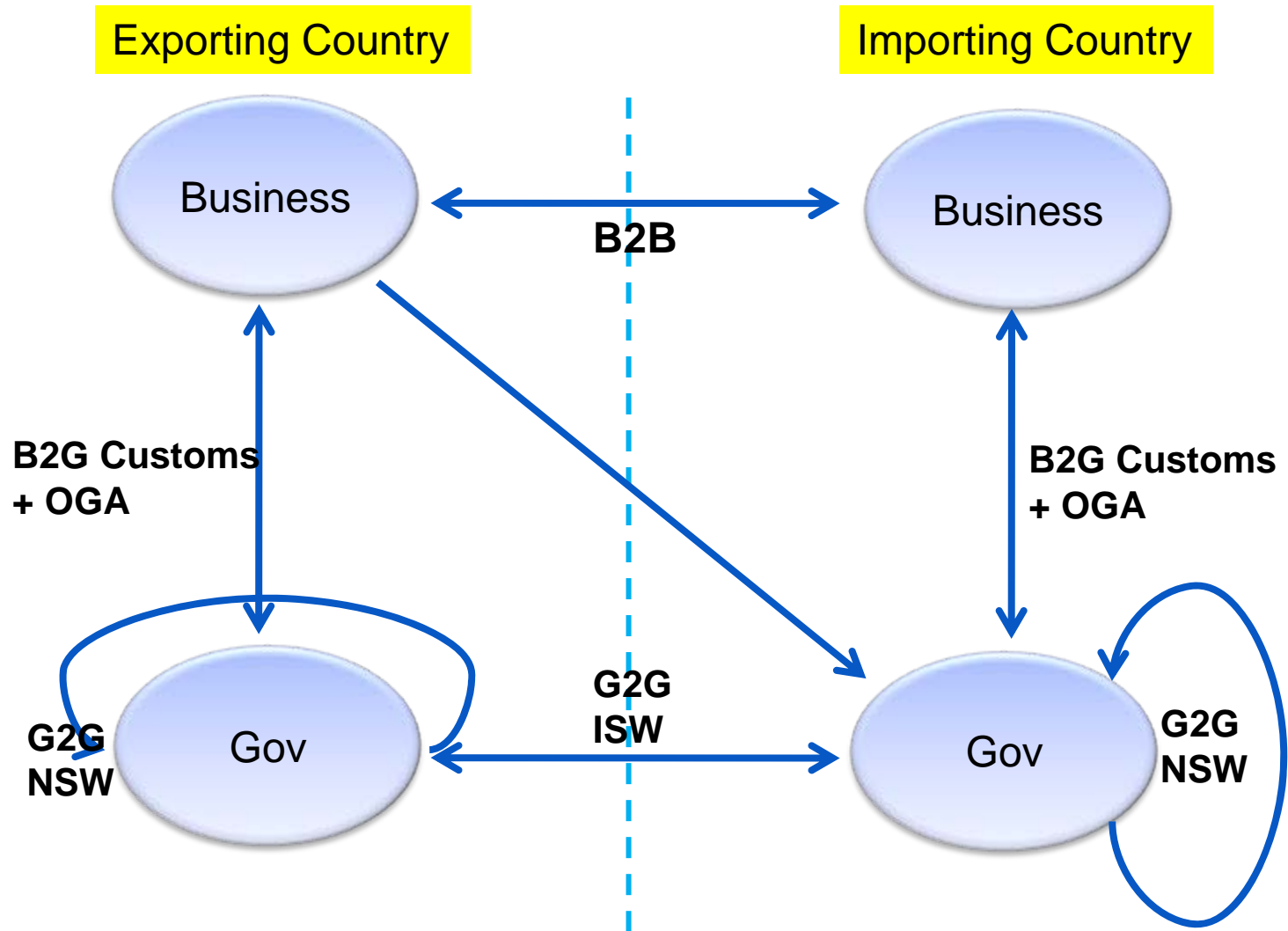
SW Business Processes Analysis

WCO's Five Dimensions





Analyzing Cross-Border Exchanges

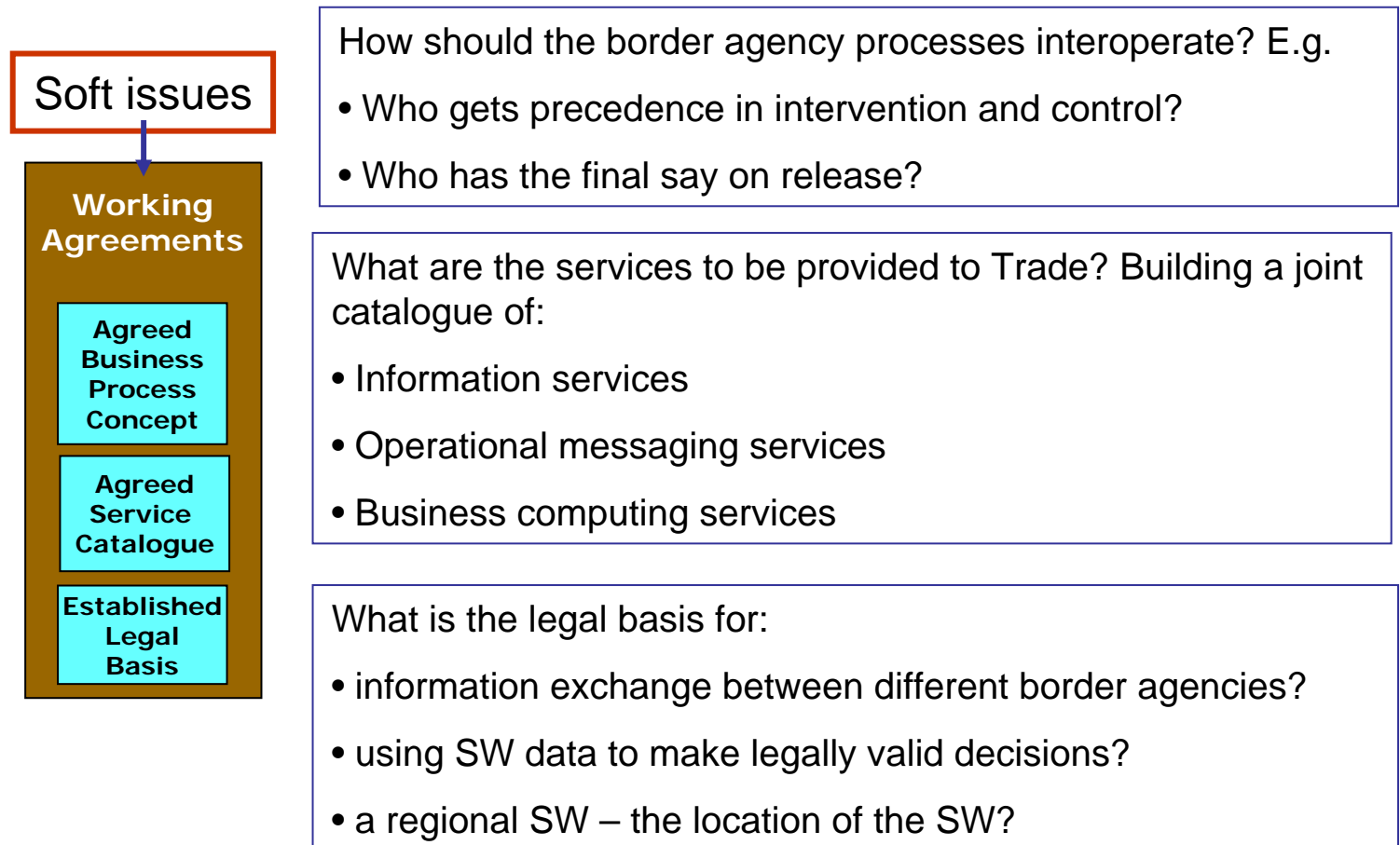




Building Blocks

Pre-requisite for setting up whole-of-government cross-border Single Window.

All participating Cross-border Regulatory Agencies (CBRAs) have to agree on:



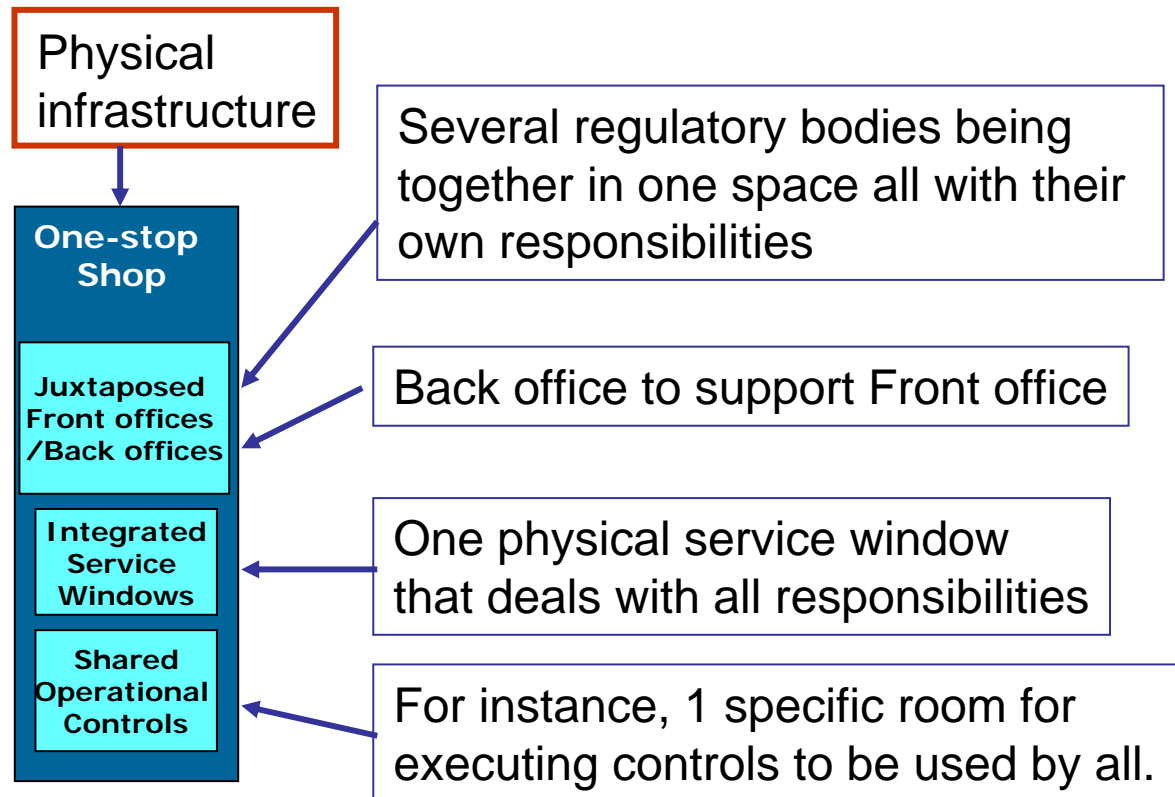


Single Window Services

- Information Services
 - e-forms
 - Data structures
 - Electronic messages/ Snippets
 - Guidelines
 - Regulatory information specific to commodities
 - Admissibility,
 - tariff structure
- Operational messaging Services
 - Registering Business entities & Business Collaboration
 - Electronic Messaging Services
 - Parsing, translating, Routing, Delivering, and Audit logging
- Business Computing services
 - Declaration Management
 - Lodging (and responding to) declarations, reports, results
 - Computing duties, taxes, fees, entitlements
 - Payment & Reconciliation
 - Accounts Management
 - Risk Management
 - Service Metrics



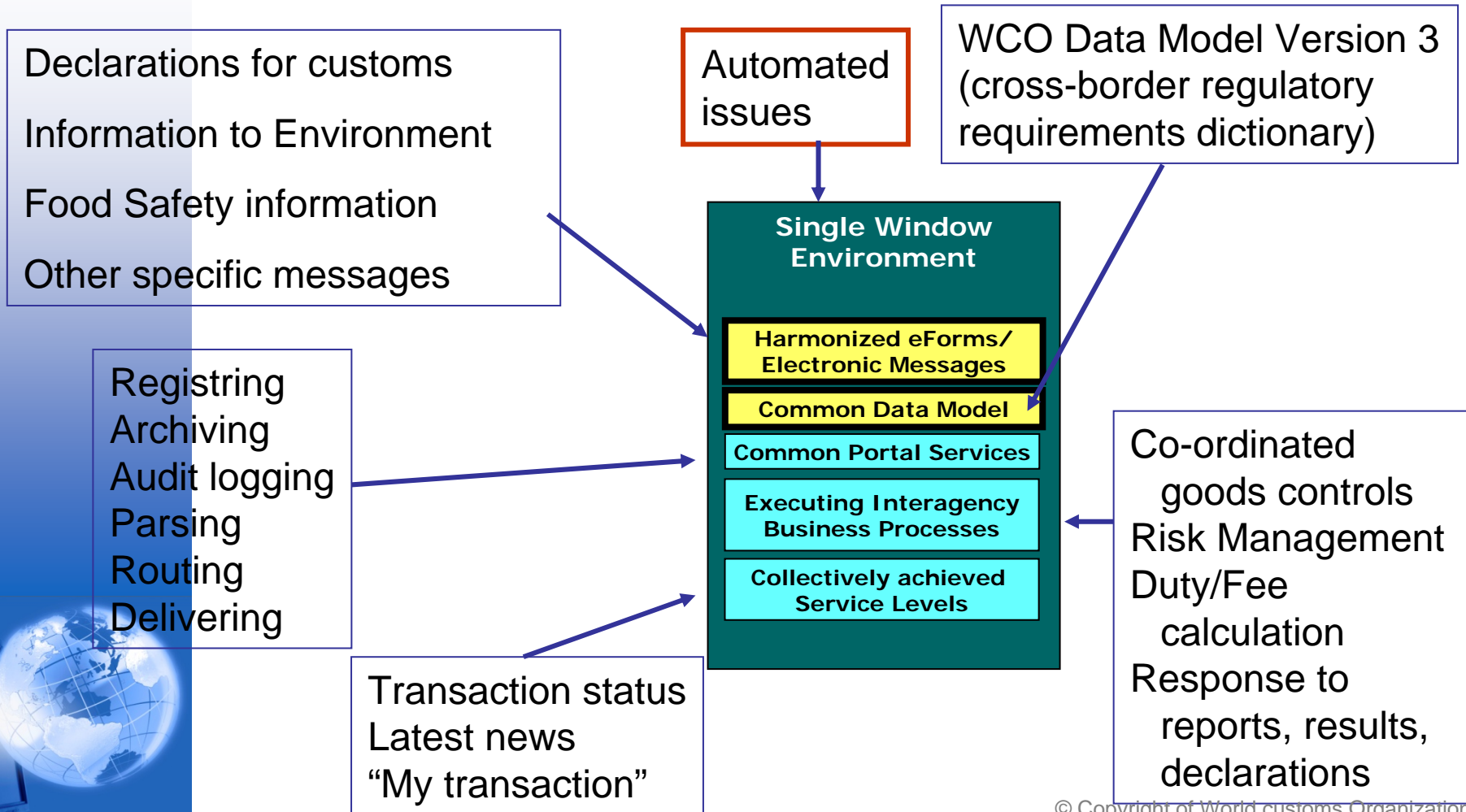
Building Blocks





Building Blocks

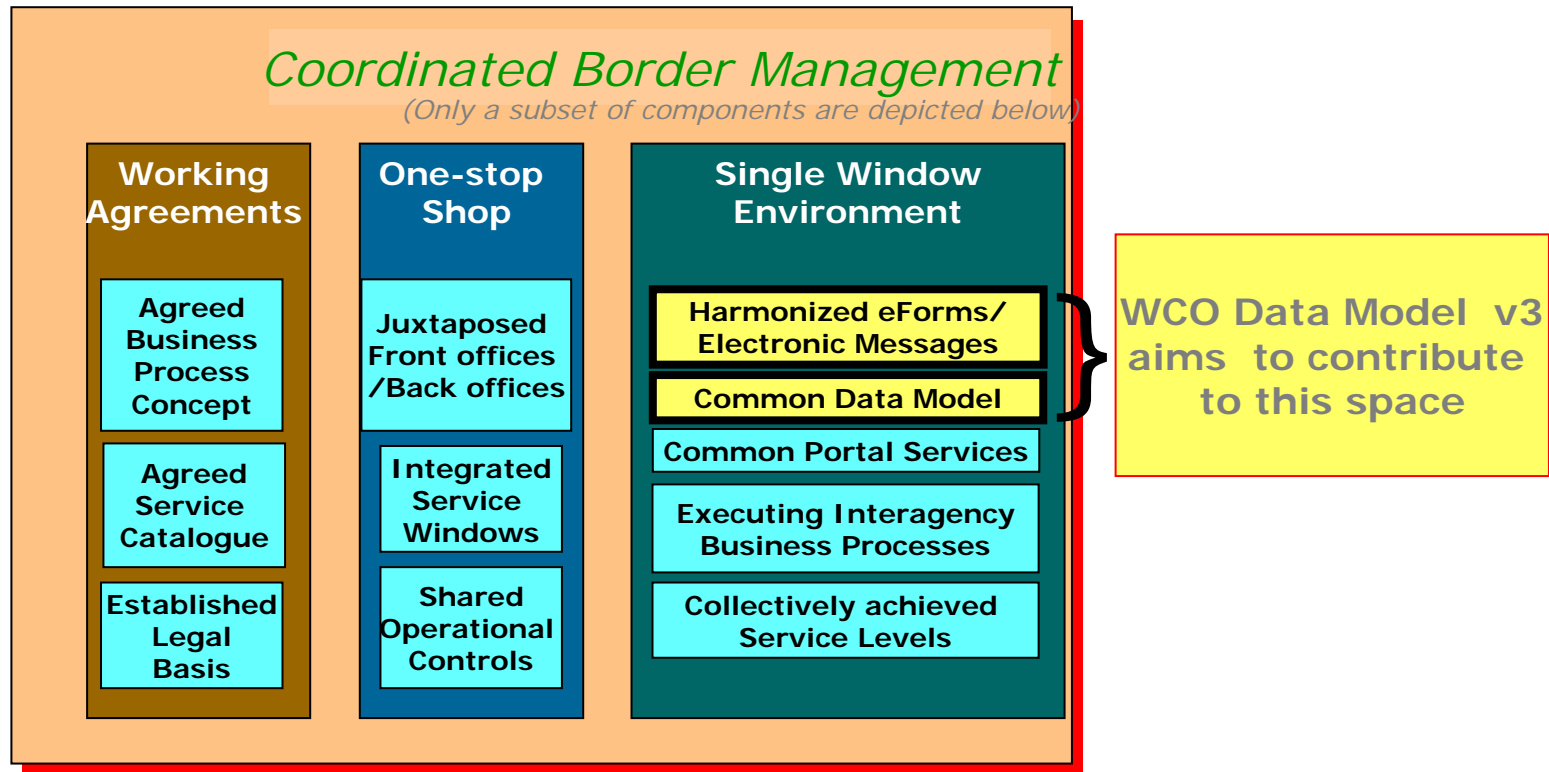
Whole-of-Government Cross-Border Single Window including Customs





Building Blocks

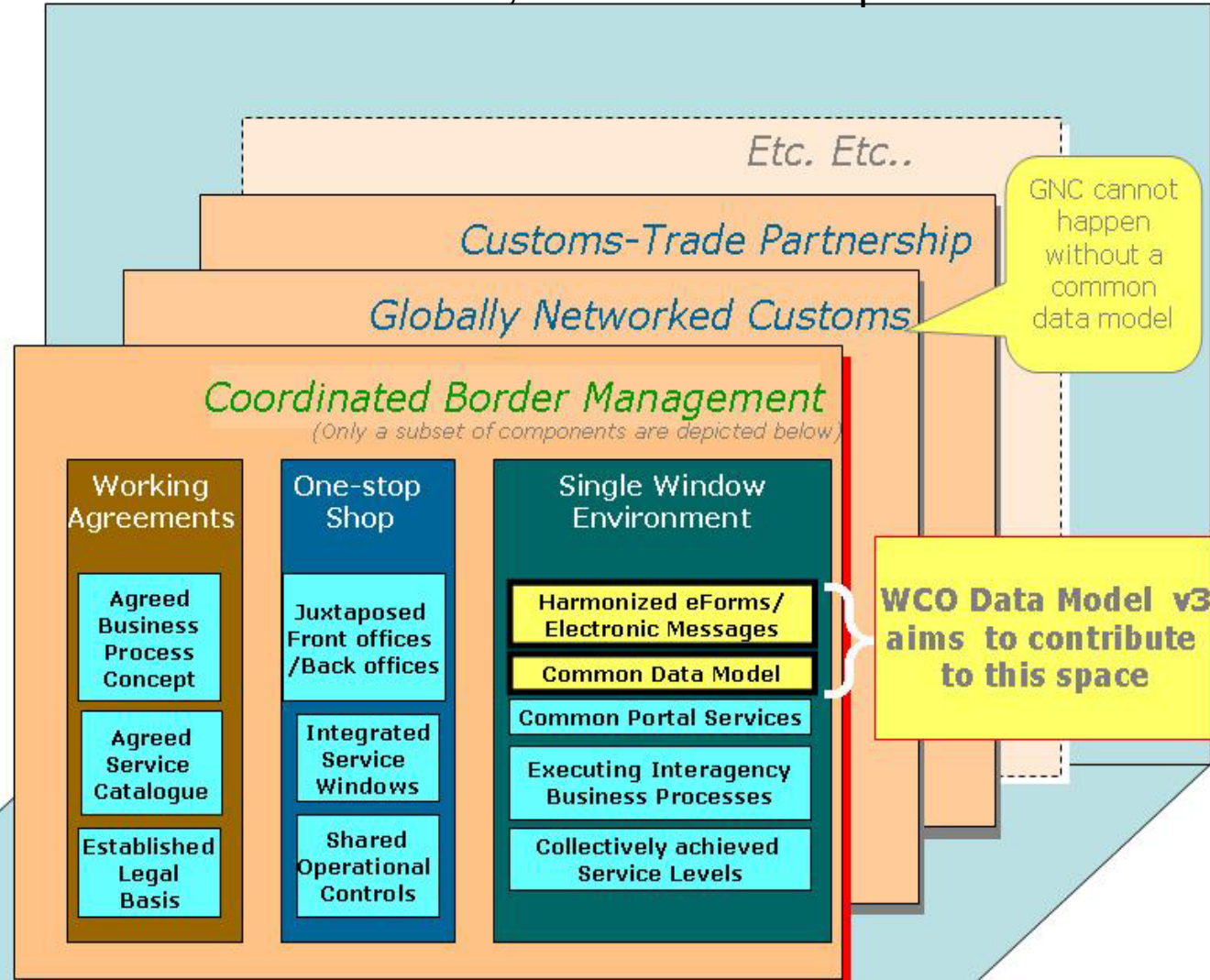
This will result in Co-ordinated Border Management amongst all border control agencies





Building Blocks

As such the Single Window should be part of CBM and that on its turn Should provide information for GNC, Trade Partnership etc.





Focus on Service Outcomes

Single Window is a bundle of services

- Joined-up services are provided by multiple government departments & agencies
- Service Outcomes:
 - Commonly measured in terms of cycle times & total cost
 - Severely impacted by variability/ predictability
 - Usually intangible or “total service experience”
 - Combined experience of all individual service encounters
- Begin with the complete scripting of the border services involving the “Single window” facilities
- Defining Single Window Projects as Service projects:
 - Ensures maintenance of service levels
 - Possible to implement as ‘Public Private Partnership’
- Single window is the System outcome
 - It is the tip of the iceberg





National Legislation & International Standards

- Single Window requirements will be drawn-up based on national legislation
 - Each participating Cross-Border Regulatory Agency needs to be consulted
- Need to examine international data standards as a source for best practices.
- Combining multiple regulatory forms to enable a single submission
 - The ‘corner stone’ of the Single Window
 - WCO Data Model as the basis for Data Harmonisation
- Procedural simplification should be based on the ‘scripted’ ideal for border service





WCO Guidelines on Single Window Data Harmonization

- Introduction
- Objective
- Tools:
 - WCO Guide to Initial Functional Assessment
 - WCO Single Window Data Harmonization Guidelines
- Horizontal issues
 - Harmonization Policy
 - Organization
 - Communication
- Data Harmonization process steps
 - Data Capturing
 - Defining
 - Analyzing
 - Reconciling
- The size of the standard data set
- Impact on Legacy Systems
- **Example**





What to Capture?

- Agency data element number
- Data element name
- Data element description
- Representation
- Data domain
- Mode of transport
- Process
- Category of use
- Legal permission to collect or view
- Source of legal authority
- Expiration date of legal authority
- Data source
- Trade Source
- Timing, when data is required and provided
- Agency flow source -
- Remarks/Comments





Illustration

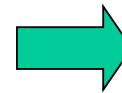
NAME	DESCRIPTION	TYPE	SOURCE	MODE
Port of Unloading	Location where goods are removed from the ship	4 digit proprietary code	Carrier	Ship
Port of unloading	Airport where consignment is taken off the airplane	4 digit proprietary code	Carrier	Air
Domestic Port of Unloading	Domestic port where merchandise is removed mode of transport	4 digit proprietary code UNLOCODE	Carrier Broker Importer	Air, Rail, Ship, Truck
Domestic Port of Unlading	Domestic airport where consignment is taken off the airplane	UNLOCODE	Carrier	Air
Foreign Port of Unloading	Foreign port where merchandise is unloaded from the conveyance	5 digit proprietary code	Carrier Exporter	Air, Rail, Ship, Truck
Foreign Port of Unlading	Foreign airport where consignment is taken off the airplane	5 digit proprietary code UNLOCODE	Carrier	Air, Ship



Illustration contd..

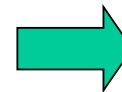
Research/Findings - example

Currently Collected
Port of Unloading
Port of Unlading
Domestic Port of Unloading
Domestic Port of Unlading
Foreign Port of Unloading
Foreign Port of Unlading



From the WCO DM
Place of discharge,
coded
UNTDDED, 3225

Port Codes
4 N Customs Proprietary
5 N Statistical Proprietary



UNLOCODE
UNECE Recommendation
Number 16





Data Harmonization Projects

- Data Harmonization – Key to Single Window implementation
 - Begins with analysis of forms & regulations
 - WCO SW and Data Harmonization Guidelines
- National Project
 - Integrated Trade Data System – United States
 - Electronic Documents Management System – Rep. of Korea
 - SDS – Australia
- Regional Project
 - APEC Data Harmonization guidelines
 - ASEAN SAD
 - European Union (MCC, ITAIDE, MarNis)
- WCO Regional Workshops on WCO Data Model
 - WCO Data Model helps in Single Window Data Harmonization.
 - WCO Regional workshops promote SW Data harmonization initiatives





WCO Data Model

Top 4 Benefits

1. Reduces costs to trade by **simplifying data requirements**
2. Improves reporting and compliance by improving the **quality of data**.
3. A **comprehensive reference** on cross-border regulatory data standards.
 1. Meets requirements of several international conventions.
 2. Is aligned with widely used international standards
4. Enables **Single Window** implementation
 1. Can be used as the basis for Data Harmonization
 2. Includes data requirements from Customs, statistics, agriculture, environment & marine safety
 3. Provides an electronic messaging solution for Single Window





WCO Data Model

How to adopt?

- Review existing systems and solutions
 - hardware & software applications
- Develop a business model
 - Cost benefit analysis
- Engage with senior managers involved in:
 - Policy & Procedures
 - Information Technology solutions
 - Operations
- In case of a Single Window project:
 - Engage with the senior managers of other Cross-Border Regulatory Agencies
- Implementation strategy to include
 - Business process redesign
 - Change management
- Engage with the Private Sector & Industry Groups





WCO Data Model

Policy Decision needed

- Executive decision to adopt standardized data elements
 - At the national level
 - At the level of a regional trading block
- Ensure **full awareness** among
 - Strategic managers/ Policy leaders
 - Operational/ technical & IT staff
- **Prescribe** the use of WCO Data Model **as a basic reference**:
 - For specifying regulatory forms
 - Electronic messaging guidelines
- Assess the present state of alignment with the WCO Data Model
 - **Publish and maintain** mapping between national requirements and WCO Data Model
- Ensure that:
 - New regulations will use Data Model names and definition
 - Use WCO Data Model elements & structures in new systems
- Encourage regular participation in WCO Data Model activities





THANK YOU

SP SAHU
sp.sahu@wcoomd.org

