

CPMM Methodology Review & Quarterly Reports

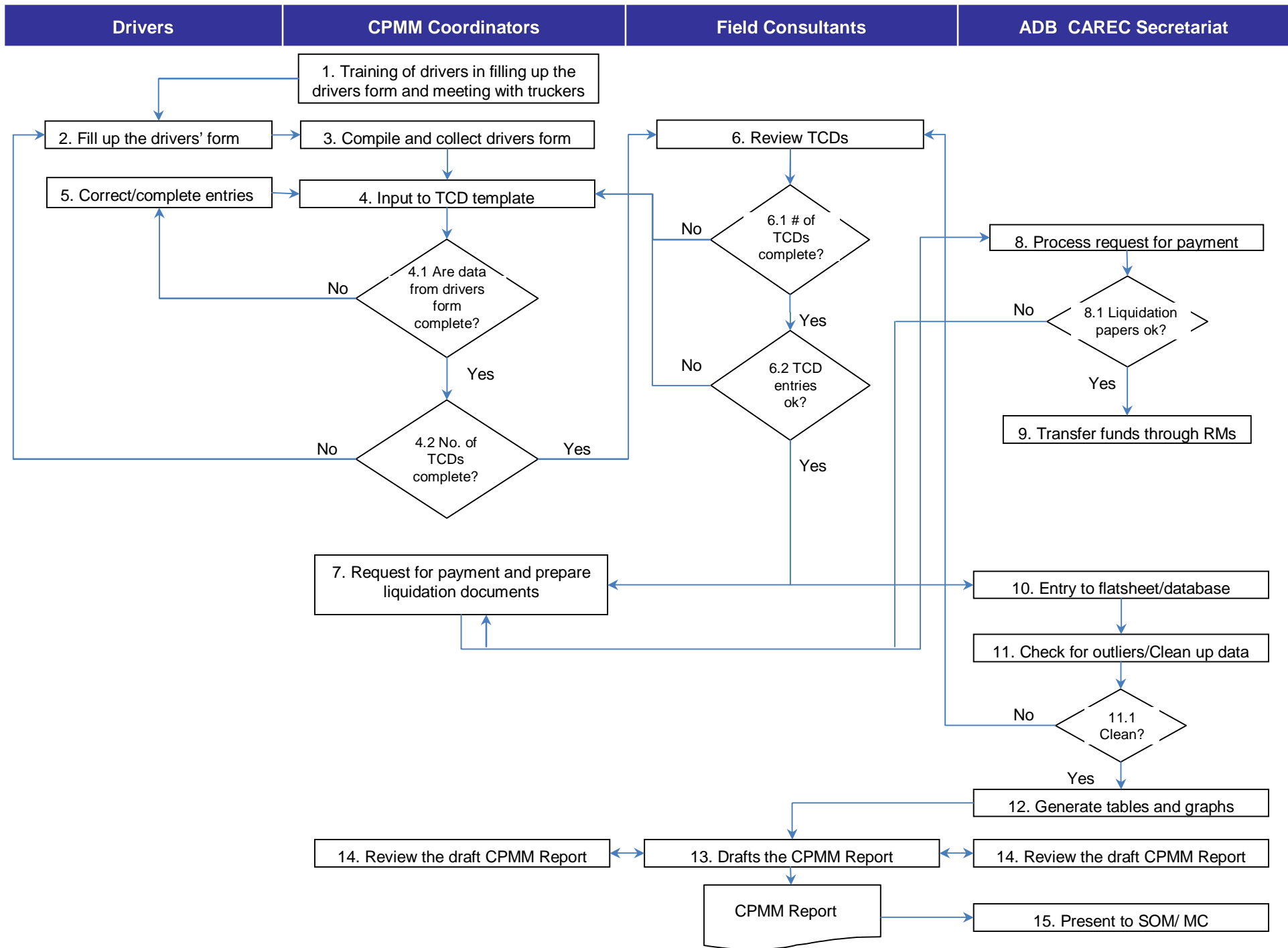
**Corridor Performance Measurement and
Monitoring (TA 6437 REG)**

**28 July 2010
Urumqi, People Republic of China**

Contents

1 Review of CPMM Methodology

2 Persistent Problems in Q4 2009



Problem 1 : Please indicate 'TIR' Status

	A	B	C	D	E	F	G	H	I	J	K	L	M	N	O	P	Q	R	S	T	U	V
7	Route Plan			Naushki-Sukhbaatar-Tolgoit-Choir-Sainshand-Zamiin-Uud-Erlian-Tianjin																		
10	City/Town of origin	<input type="text" value="Naushki"/>		Country of origin	<input type="text" value="RUS"/>		TIR?	<input type="text" value="No"/>														
12	City/Town of destination	<input type="text" value="Tianjin"/>		Country of destination	<input type="text" value="PRC"/>																	
14	Date of departure	<input type="text" value="28-Feb-10"/>		Time of departure	<input type="text" value="2:30 PM"/>																	
16	Date of arrival	<input type="text" value="3-Mar-10"/>		Time of arrival	<input type="text" value="None"/>																	
18	Vehicle information																					
20	Odometer reading start	<input type="text"/>			Odometer reading end	<input type="text"/>																
22	Country of registration	<input type="text"/>			Country of manufacture	<input type="text"/>																
24	Model	<input type="text"/>			Manufacturer	<input type="text"/>																
26	Year of manufacture	<input type="text"/>			Compliance	<input type="text"/>																
28	Cargo Information																					
30	Commodity type	<input type="text" value="Wood"/>		Cargo weight (tons)	<input type="text" value="61.00"/>		<input type="text" value="No"/>	20 ft container														
32	Perishable?	<input type="text" value="No"/>					<input type="text" value="No"/>	40 ft container														
34	Other Information																					
36	Drivers citizenship	<input type="text" value="MON"/>		Date of questionnaire completion	<input type="text" value="9-Apr-10"/>																	
38	Route Distance, Cost and Duration																					
40	Overall distance (km)	<input type="text" value="1,109.00"/>		Overall duration	<input type="text" value="3.00"/>				days													
42	Overall cost (USD)	<input type="text" value="1,398.46"/>				<input type="text" value="11.82"/>		hours														

Please put 'Yes' or 'No' to all TIR box.

For associations providing rail only data, please indicate 'No' on all forms.

Problem 2 : Please indicate 'Cargo Weight'

	A	B	C	D	E	F	G	H	I	J	K	L	M	N	O	P	Q	R	S	T	U	V	W
8	Route Name																						
9	nanjin-Erlian-Zamin-Gud-Sainshand-Chov-Ulaanbaatar																						
10	City/Town of origin	<input type="text" value="Tianjin"/>			Country of origin	<input type="text" value="PRC"/>			TIR?	<input type="checkbox"/>													
12	City/Town of destination	<input type="text" value="Ulaanbaatar"/>			Country of destination	<input type="text" value="MON"/>																	
14	Date of departure	<input type="text" value="19-Mar-10"/>			Time of departure	<input type="text" value="None"/>																	
16	Date of arrival	<input type="text" value="27-Mar-10"/>			Time of arrival	<input type="text" value="1:45 AM"/>																	
18	Vehicle information																						
20	Odometer reading start	<input type="text"/>			Odometer reading end	<input type="text"/>																	
22	Country of registration	<input type="text"/>			Country of manufacture	<input type="text"/>																	
24	Model	<input type="text"/>			Manufacturer	<input type="text"/>																	
26	Year of manufacture	<input type="text"/>			Compliance	<input type="text"/>																	
28	Cargo Information																						
30	Commodity type	<input type="text" value="Material"/>			Cargo weight (tons)	<input type="text"/>			Yes	20 ft container													
32	Perishable?	<input type="text" value="No"/>						No	40 ft container														
34	Other Information																						
36	Drivers citizenship	<input type="text" value="MON"/>			Date of questionnaire completion	<input type="text" value="9-Apr-10"/>																	
38	Route Distance, Cost and Duration																						
40	Overall distance (km)	<input type="text" value="1,277.00"/>			Overall duration	<input type="text" value="8.00"/>			days														
42	Overall cost (USD)	<input type="text" value="2,180.60"/>						<input type="text" value="2.75"/>			hours												
63																							

- 1) If you have the weight information, please put in the tons.
- 2) For container cargoes, please put the 'tons'. If it is 20 ft container, tons = '20'. If it is 40 ft container, tons = '40'.

Do not enter 'kgs' for tons.

Problem 3 : Define the BCP

1	A	B	D	E	F	G	H	I	J	K	L	M	N	O	P	Q	R	S	T	U	V	W	X	Y	Z	AA	AB	AC	AD	AE	AF	AG	AH	AI	AJ	AK	AL							
			ORIGIN			STOP 1			STOP 2			STOP 3			STOP 4			STOP 5																										
2		Name of city:	Tianjin				Erlian					Zamiin-Uud				Sainshand				Choir				Ulaanbaatar																				
3	Place of stop	Name of country:	PRC				PRC					MON				MON				MON				MON																				
4		CAREC Corridor	4b				4b					4b				4b				4b				4b																				
5	Mode of transport		Rail				Rail					Rail				Rail				Rail				Rail																				
6	Distance from previous stop (km)		0				565					8				235				231				238																				
7	Duration of travel (hours)						120 hrs 0 mins					12 hrs 0 mins				4 hrs 39 mins				10 hrs 15 mins				2 hrs 50 mins																				
8	Transit cost (US\$)						\$1,200.00					\$3.60				\$250.50				\$275.80				\$284.10																				
9	Reason for stop	Place of Departure					Exit Border Crossing					Entry Border Crossing				Intermediate Stop				Intermediate Stop				Final Destination																				
10		Activities	Duration	Cost (USD)	Official?	Duration	Cost (USD)	Official?	Duration	Cost (USD)	Official?	Duration	Cost (USD)	Official?	Duration	Cost (USD)	Official?	Duration	Cost (USD)	Official?	Duration	Cost (USD)	Official?	Duration	Cost (USD)	Official?	Duration	Cost (USD)	Official?	Duration	Cost (USD)	Official?	Duration	Cost (USD)	Official?	Duration	Cost (USD)	Official?	Duration	Cost (USD)	Official?			
11	Description of stop	Health / quarantine	hrs mins			hrs mins			hrs mins			hrs mins			hrs mins			hrs mins			hrs mins			hrs mins			hrs mins			hrs mins			hrs mins			hrs mins			hrs mins					
12		Phytosanitary	hrs mins			hrs mins			hrs mins			hrs mins			hrs mins			hrs mins			hrs mins			hrs mins			hrs mins			hrs mins			hrs mins			hrs mins			hrs mins					
13		Veterinary inspection	hrs mins			hrs mins			hrs mins			hrs mins			hrs mins			hrs mins			hrs mins			hrs mins			hrs mins			hrs mins			hrs mins			hrs mins			hrs mins			hrs mins		
14		Border security / control	hrs mins			hrs mins			hrs mins			hrs mins			hrs mins			hrs mins			hrs mins			hrs mins			hrs mins			hrs mins			hrs mins			hrs mins			hrs mins			hrs mins		
15		Visa / immigration	hrs mins			hrs mins			hrs mins			hrs mins			hrs mins			hrs mins			hrs mins			hrs mins			hrs mins			hrs mins			hrs mins			hrs mins			hrs mins			hrs mins		
16		Customs clearance	hrs mins			hrs mins			hrs mins			hrs mins			hrs mins			hrs mins			hrs mins			hrs mins			hrs mins			hrs mins			hrs mins			hrs mins			hrs mins			hrs mins		
17		Detour	hrs mins			hrs mins			hrs mins			hrs mins			hrs mins			hrs mins			hrs mins			hrs mins			hrs mins			hrs mins			hrs mins			hrs mins			hrs mins			hrs mins		
18		Waiting/ queue	hrs mins			24 hrs 0 mins			hrs mins			hrs mins			5 hrs 21 mins			3 hrs 45 mins			11 hrs 55 mins																							
19		Loading / unloading	hrs mins			hrs mins			hrs mins			hrs mins			hrs mins			hrs mins			hrs mins			hrs mins			hrs mins			hrs mins			hrs mins			hrs mins			hrs mins			hrs mins		
20		Escort / convoy	hrs mins			hrs mins			hrs mins			hrs mins			hrs mins			hrs mins			hrs mins			hrs mins			hrs mins			hrs mins			hrs mins			hrs mins			hrs mins			hrs mins		
21		Weight/standard inspection	hrs mins			hrs mins			hrs mins			hrs mins			hrs mins			hrs mins			hrs mins			hrs mins			hrs mins			hrs mins			hrs mins			hrs mins			hrs mins			hrs mins		
22		Police checkpoint / stop	hrs mins			hrs mins			hrs mins			hrs mins			hrs mins			hrs mins			hrs mins			hrs mins			hrs mins			hrs mins			hrs mins			hrs mins			hrs mins			hrs mins		
23		Transport/GAI inspection	hrs mins			hrs mins			hrs mins			hrs mins			hrs mins			hrs mins			hrs mins			hrs mins			hrs mins			hrs mins			hrs mins			hrs mins			hrs mins			hrs mins		
24		Environment/ecology checkpoint	hrs mins			hrs mins			hrs mins			hrs mins			hrs mins			hrs mins			hrs mins			hrs mins			hrs mins			hrs mins			hrs mins			hrs mins			hrs mins			hrs mins		
25		Vehicle registration	hrs mins			hrs mins			hrs mins			hrs mins			hrs mins			hrs mins			hrs mins			hrs mins			hrs mins			hrs mins			hrs mins			hrs mins			hrs mins			hrs mins		
26		Repair / tire replacement	hrs mins			hrs mins			hrs mins			hrs mins			hrs mins			hrs mins			hrs mins			hrs mins			hrs mins			hrs mins			hrs mins			hrs mins			hrs mins			hrs mins		
27		Transshipment	hrs mins			hrs mins			hrs mins			hrs mins			hrs mins			hrs mins			hrs mins			hrs mins			hrs mins			hrs mins			hrs mins			hrs mins			hrs mins			hrs mins		
28		Meals	hrs mins			hrs mins			hrs mins			hrs mins			hrs mins			hrs mins			hrs mins			hrs mins			hrs mins			hrs mins			hrs mins			hrs mins			hrs mins			hrs mins		
29		Rest/overnight stay	hrs mins			hrs mins			hrs mins			hrs mins			hrs mins			hrs mins			hrs mins			hrs mins			hrs mins			hrs mins			hrs mins			hrs mins			hrs mins			hrs mins		
30		Change of Railways Gauge	hrs mins			hrs mins			hrs mins			hrs mins			hrs mins			hrs mins			hrs mins			hrs mins			hrs mins			hrs mins			hrs mins			hrs mins			hrs mins			hrs mins		
31	Activity 2	hrs mins			hrs mins			hrs mins			hrs mins			hrs mins			hrs mins			hrs mins			hrs mins			hrs mins			hrs mins			hrs mins			hrs mins			hrs mins			hrs mins			
32	Activity 3	hrs mins			hrs mins			hrs mins			hrs mins			hrs mins			hrs mins			hrs mins			hrs mins			hrs mins			hrs mins			hrs mins			hrs mins			hrs mins			hrs mins			
33	Activity 4	hrs mins			hrs mins			hrs mins			hrs mins			hrs mins			hrs mins			hrs mins			hrs mins			hrs mins			hrs mins			hrs mins			hrs mins			hrs mins			hrs mins			
34	TOTAL		hrs 0 mins	0	0	24 hrs 0 mins	0	0	0 hrs 0 mins	0	0	5 hrs 21 mins	0	0	3 hrs 45 mins	130.6	0	11 hrs 55 mins	0	0																								

For Erlian, it should be 'Exit Border Crossing' since goods are leaving from China PRC. For Zamii-Uud, it should be 'Entry Border Crossing' since the goods are entering into Mongolia.

Problem 4 : Distance, Transit Time and Cost

	A	B	C	D	E	F	G	H	I	J	K	L	M	N	O
1			ORIGIN					STOP 1							
2	Place of stop	Name of city:	Kirgiziya					Girgatal							
3		Name of country:	KGZ					TAJ							
4		CAREC Corridor													
5	Mode of transport	Road					Road								
6	Distance from previous stop (km)	80					17								
7	Duration of travel (hours)	3	20				1	hrs	mins						
8	Transit cost (US\$)	<div style="border: 2px solid red; border-radius: 50%; padding: 2px; display: inline-block;">\$46.00</div>					\$6.00								
9	Reason for stop	Place of Departure					Intermediate Stop								
10		Activities	Duration		Cost (USD)	Official?	Duration		Cost (USD)	Official?					
11		Health / quarantine	hrs	mins	\$4.00	Yes	hrs	mins							
12		Phytosanitary	hrs	mins	\$3.00	No	hrs	mins							
13		Veterinary inspection	hrs	mins	\$3.00	Yes	hrs	mins							
14		Border security / control	hrs	mins	\$5.00	No	hrs	mins							
15		Visa / immigration	hrs	mins			hrs	mins							
16		Customs clearance	hrs	mins	\$17.00	No	hrs	mins							
17		Detour	hrs	mins			hrs	mins							
18		Waiting / queue	hrs	mins			hrs	mins							
19		Loading / unloading	hrs	mins			hrs	mins							
20		Escort / convey	hrs	mins			hrs	mins							

Please note the distance, time and cost is from **PREVIOUS** stop to **THIS** stop.

What is the meaning of this?

Problem 5: The last column has no data

STOP 12			STOP 13			STOP 14		
Rudaky			Terminal of Dushanbe city					
TAJ			TAJ					
Road			Road					
4								
hrs	10	mins	hrs		mins	hrs		mins
\$3.00								
Intermediate Stop			Final Destination					
Duration	Cost (USD)	Official?	Duration	Cost (USD)	Official?	Duration	Cost (USD)	Official?
hrs			hrs			hrs		
mins			mins			mins		
hrs			hrs			hrs		
mins			mins			mins		
hrs			hrs			hrs		
mins			mins			mins		
hrs			hrs			hrs		
mins			mins			mins		
hrs			hrs			hrs		
mins			mins			mins		
hrs			hrs			hrs		
mins			mins			mins		
hrs	12		hrs			hrs		
mins		No	mins			mins		
hrs			hrs			hrs		
mins			mins			mins		
hrs			hrs			hrs		
mins			mins			mins		
hrs			hrs			hrs		
mins			mins			mins		
hrs			hrs			hrs		
mins			mins			mins		

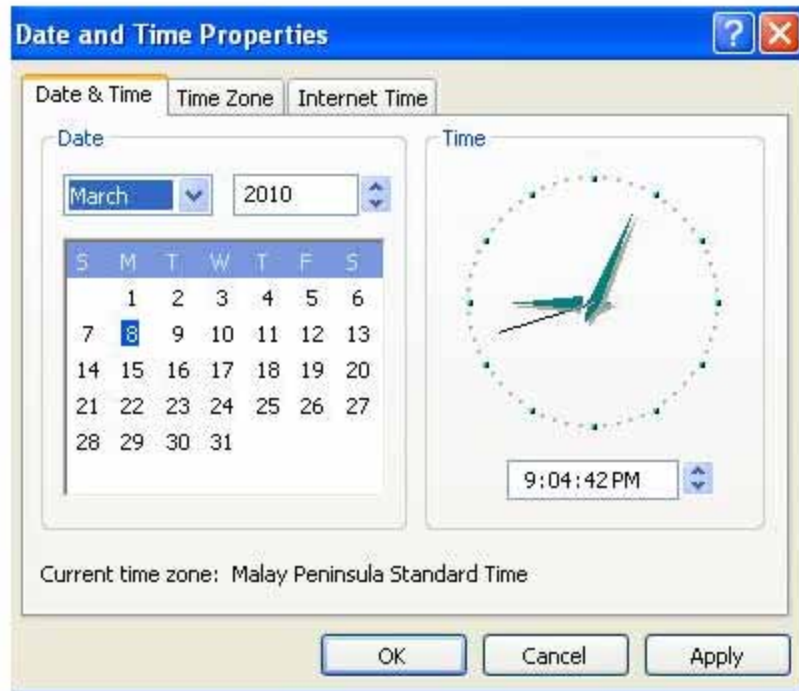
If the last stop is a BCP, please enter 'Exit Border Crossing' or 'Entry Border Crossing'.

If the last stop is not a BCP, then put 'Final Destination'.

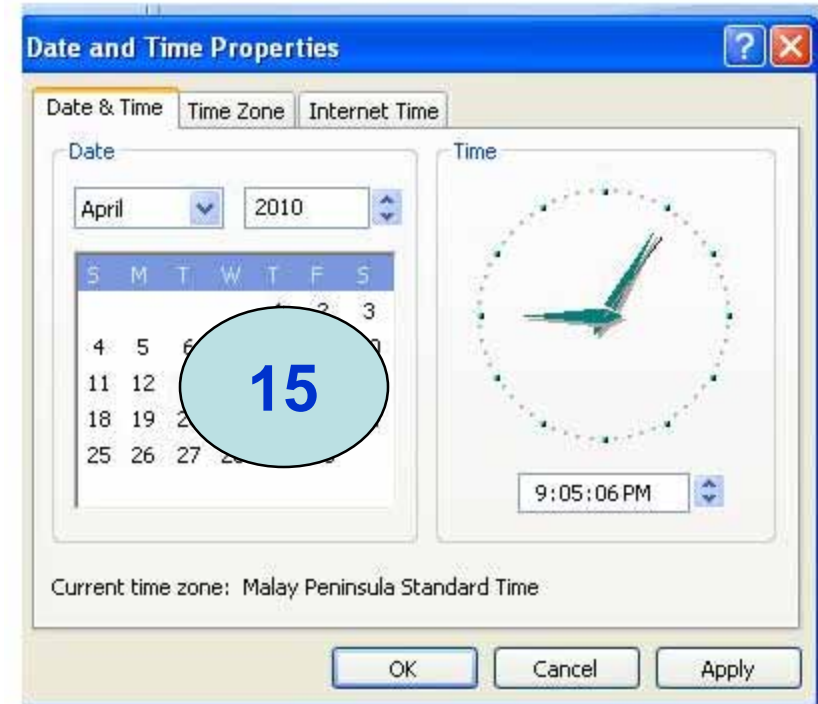
The last stop should have distance, time and cost information.

In particular, please provide the information on the stop activities.

Problem 6 : Late Submission of Data



For the data in this month....



Please submit by the 15th of next month

TCD Form for Rail Data

1			ORIGIN			
15	Description of stop	Visa / immigration	hrs	mins		
16		Customs clearance	hrs	mins		
17		Detour	hrs	mins		
18		Waiting/ queue	48	hrs	3	mins
19		Loading / unloading	hrs	mins		
20		Escort / convoy	hrs	mins		
21		Weigh/standard inspection	hrs	mins		
22		Police checkpoint / stop	hrs	mins		
23		Transport/GAI inspection	hrs	mins		
24		Environment/ecology checkpoint	hrs	mins		
25		Vehicle registration	hrs	mins		
26		Repair / tire replacement	hrs	mins		
27		Transshipment	hrs	mins		
28		Meals	hrs	mins		
29		Rest/overnight stay	hrs	mins		
30	Change of Railways Gauge	4	hrs	30	mins	
31	Classification of Cargoes	7	hrs	46	mins	
32	Change of Locomotives	hrs	mins			
33	Railways Inspection	1	hrs	30	mins	
34	TOTAL		60	hrs	##	mins
				0	0	
35	Description of actions taken (e.g. procedures, formalities applicable to the section of the route).					

Suggested Activities for Rail

1. Change of Railways Gauge
2. Classification Charges
3. Change of Locomotives
4. Railways Inspection
5. Load Protection Fees

Types of Activities (Rails)

S/N	Types of Rail Costs	Definitions
1	Change of Railways Gauge (only applicable in BCPs with Chinese border)	PRC uses 1.435m railway gauge standard, which is the international standard used in the world. Countries in the former Soviet bloc use the 1.520m railway gauge, which is the wide gauge. When the train crosses the border, the rail cars must be re-loaded onto another kind of carriage that works in the destination country. This work is chargeable by the railways terminal.
2	Classification	This activity occurs at the railway terminals. The reason is that a train of freight cars contain different goods bound for different destinations. At major railways terminals, the operations department needs to identify the destination for each freight car and then group them together.

Types of Activities (Rails)

S/N	Types of Rail Costs	Definitions
3	Change of locomotives	Many Central Asian Republics use old locomotives since the Soviet times, where many are worn out. They need frequent repairs and after working for a while, they need to be taken out and maintained. These are done at major terminals.
4	Railways Inspection	There are two types of railway inspections. They are technical and commercial inspections. Technical inspection is to check the condition of the rail cars, and wheels and the locomotives. The commercial inspection is to conduct customs seal for cargoes and to check the safety of goods.

Types of Activities (Rails)

S/N	Types of Rail Costs	Definitions
5	Load Protection Fees	A charge by the Chinese customs for providing armed escort on the railways, especially when the goods are highly valuable or controlled.

Thank you



Max Ee

Supply Chain Consultant

SCM Analytics Pte Ltd

Contact : +65 8138 8700

Email: satica@pacific.net.sg