

Disclaimer: The views expressed in this article are those of the author and do not necessarily reflect the views and policies of the Asian Development Bank, or its Board of Governors or the governments they represent.

Impact at the BORDER: The Case of Quang Tri, Vietnam

The Benefits of Regional Cooperation



5 – 10 August 2007

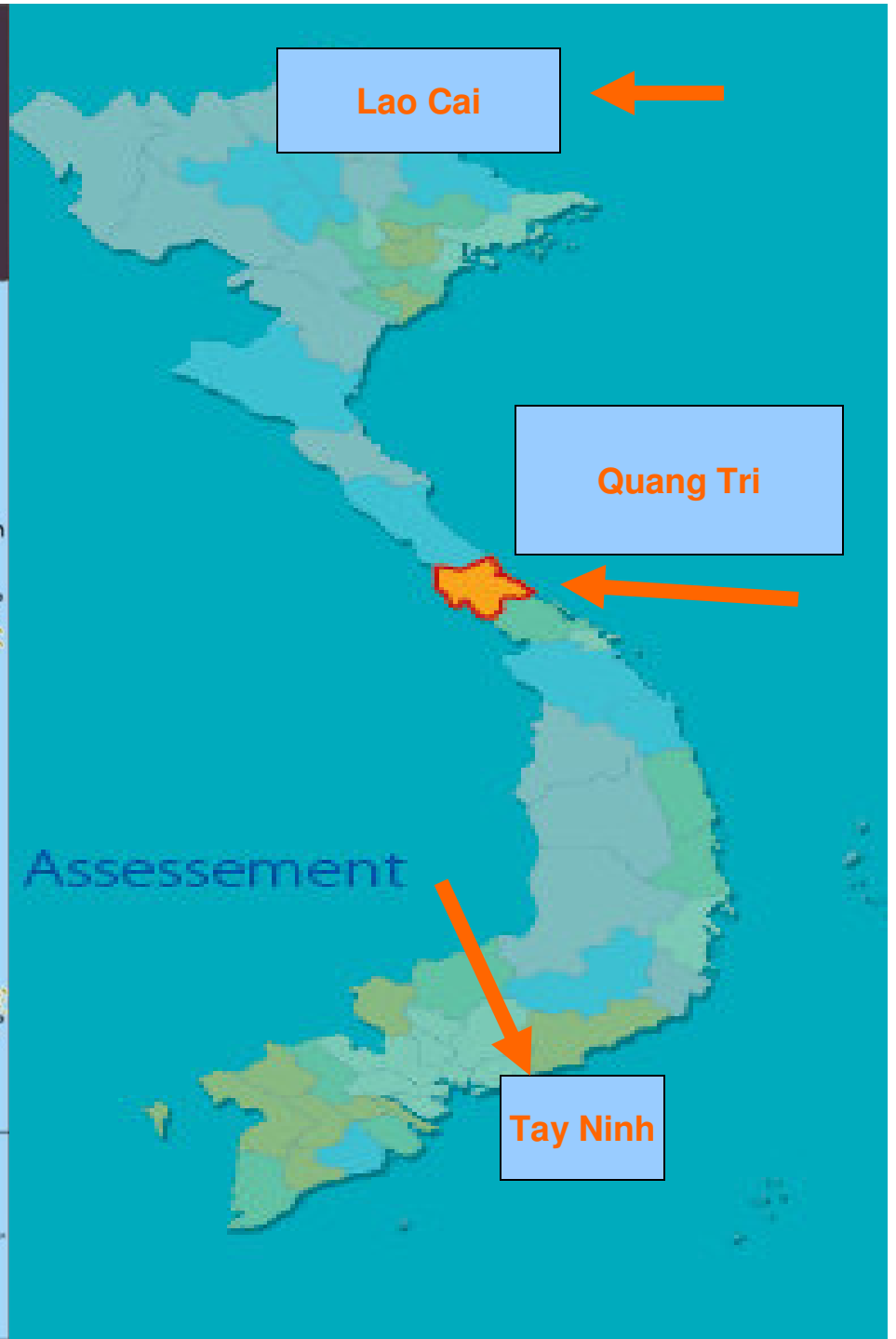


The Benefits of Regional Cooperation



**Human
Development**

**Economic
growth**



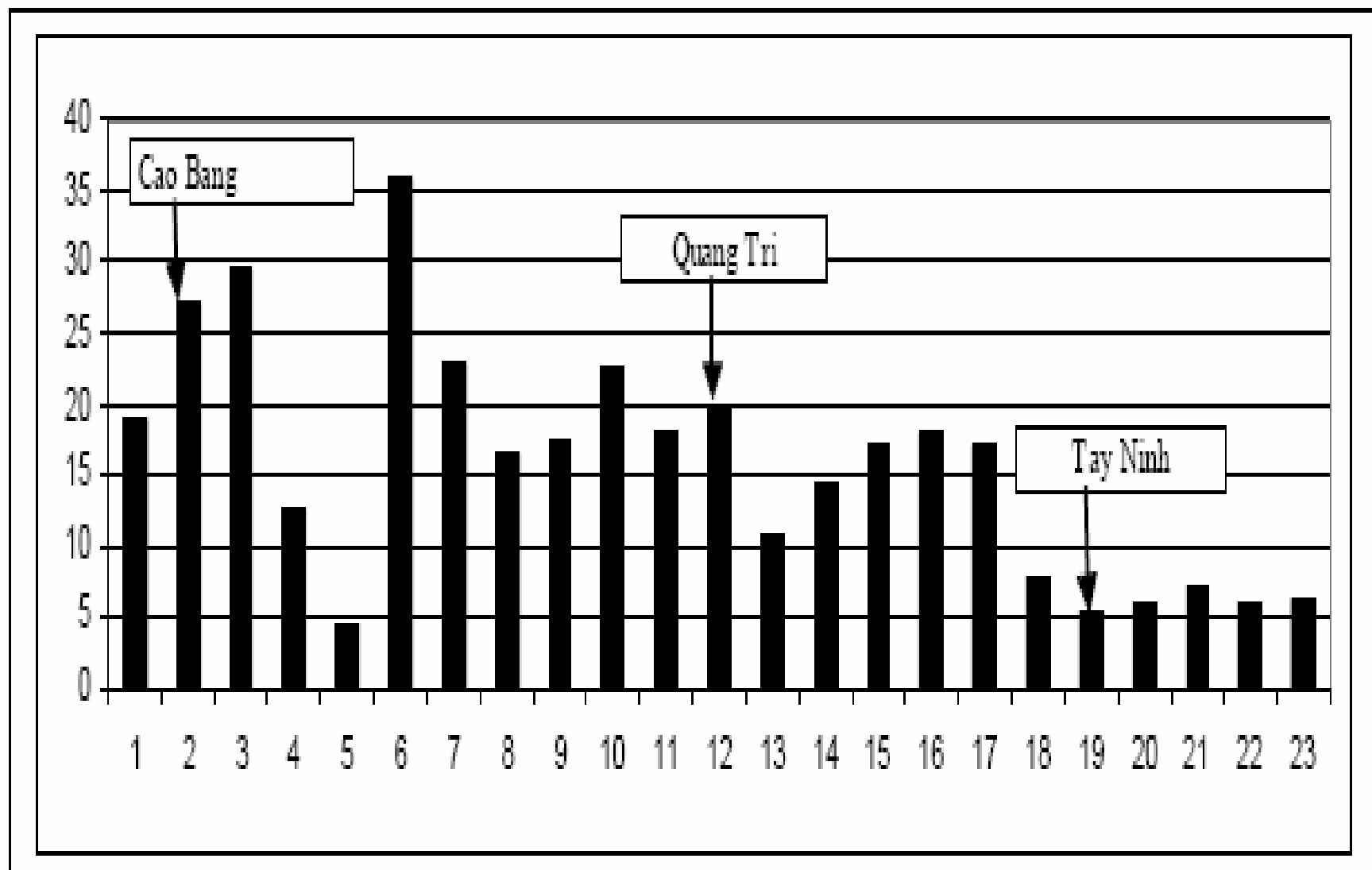
Background Data

- **Heavily bombed area during the war**
- **Agent Orange (dioxin) site**
- **Very high poverty incidence**
- **4,746 sq. km**
- **608,000 population**
- **Ethnic groups: Viet (Kinh), Bru - Van Kieu, Ta Oi, Hoa**

Socio-Economic Measures

- poverty reduction**
- Literacy**
- Tourism**
- Domestic/foreign investment**

Figure 1. Food Poverty Rate of Border Provinces, 2002



Source: Vietnam Living Standard Survey 2002, General Statistic Office.

Figure 3. Total Poverty Rate of Border Provinces, 2002

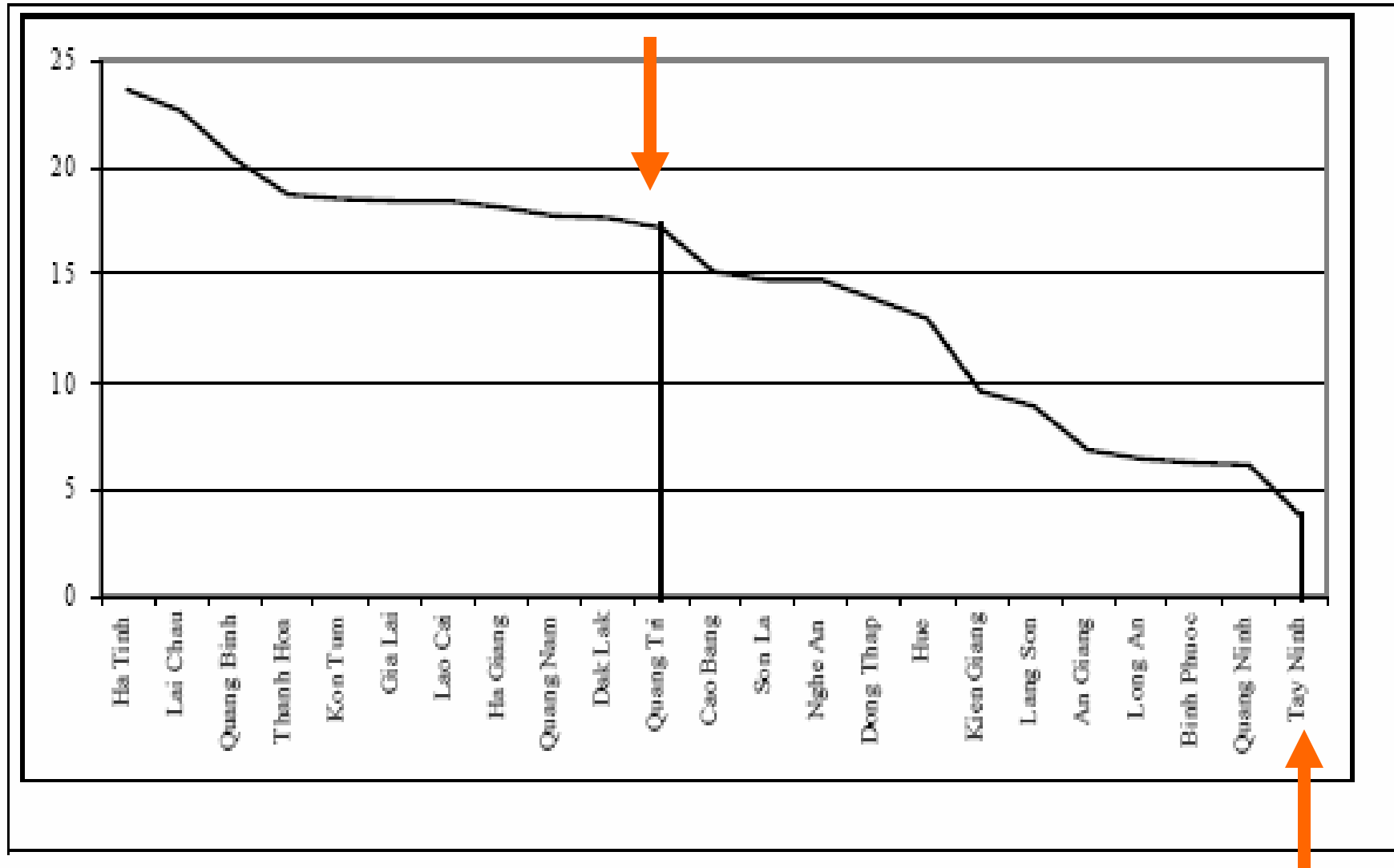


Table 6. Poverty rate (national standard) of Quang Tri province, 2001-2010

	2001	2002	2003	2004	2005	2006	2008	2010
Total households	124550	126290	128100	129850	131730	129095	123983	119073
Poor households	29951	24500	19215	16881	14490	14200	13638	13098
Poverty-escaped Hs.	4100	5451	5285	2334	2391	2439	2538	2641
Poverty rate (%)	24.05	19.40	15.00	13.00	11.00	11.00	11.00	11.00

Source: Quang Tri People's Committee (2005).

CONCENTRATED POVERTY

Commune selection in Gio Linh District:

Commune 3: Linh Thuong	Commune 4: Gio Thanh
<ul style="list-style-type: none"> • 100 % of the population are Van kieu ethnics • Obsolete production, poor transport, • Backward customs and traditions • Poverty incidence: 62.7 % 	<ul style="list-style-type: none"> • Agriculture production • It is possible to develop non-agricultural occupations • Poverty incidence: 22,4 %

Profiles of villages and communes surveyed (2 villages per commune)

	Total households	Total number of poor households	Poverty incidence
1. Linh Thuong Commune	244	153	62,7
- Cu Dinh	39		
- Dong Don	40		
2. Gio Thanh Commune	638	143	22,4
- Hoang Ha	83		
- Tan Minh	75		
3. Hai Son Commune	981	155	15,8
- Khe Muong	63		
- Tan Dien	83		
4. Hai An Commune	924	228	24,6
- Tan Tay An	158		

Table 5: Education and technical levels of the poor

	Number of poor people	Percentage (%)
<i>1. By education level (population from 5 years up)</i>		
Illiterate	21685	24,52
Graduating primary school	34097	38,56
Graduating lower secondary school	26113	29,53
Graduating upper secondary school	6538	7,39



Table 2: Pupil enrollment rates by education level (Unit: percent)

Education level	Enrollment rate (1996-2000) %	2001-2002			
		Pupil percentage	Percentage of female pupils	Percentage of ethnic pupils	Percentage of graduates
Pre-school	9,50	19,92	X	X	X
Primary	92,00	95,30	47,82	9,80	100,00
Lower secondary	85,00	89,78	45,53	6,04	97,05
Upper secondary	70,00	75,00	44,16	1,51	90,03

Source: *Education and Training Development Plan, 2001-2005.*

Table 5. Tourism development, Quang Tri province, 2000-2010

	2000	2001	2002	2003	2004	2005	2006	2008	2010
Hotels	6	10	18	23	29	29	31	36	40
- 3-star and higher grade hotels	-	-	-	-	-	-	-	3	3
- Capacity of room use (%)	40	41	43	43	45	50	60	65	70
Restaurants	2000	2081	2382	2383	2390	2400	2410	2435	2450
Total tourists	77000	86150	96382	107915	120733	135190	153120	196660	249490
- International tourists	17000	19550	22482	25855	29733	34190	40000	54760	71490
<i>As percentage of total tourists (%)</i>	<i>22.08</i>	<i>22.69</i>	<i>23.33</i>	<i>23.96</i>	<i>26.63</i>	<i>25.29</i>	<i>26.12</i>	<i>27.85</i>	<i>28.65</i>
- Residence duration/ international tourist (days)	1.1	1.12	1.57	1.2	1.4	1.5	1.57	1.73	1.9
- Expenditures/ international tourist (USD)	50	50.5	51	52	54	55	56.9	60.8	65

Source: Quang Tri People's Committee (2005).

Increasing Investment

Table 2. Total investment capital, Quang Tri province, 2000-2010 (billion VND)

	2000	2001	2002	2003	2004	2005	2006	2008	2010
Total investment capital	609	764	871	1050	1310	1700	1910	2320	3010
<i>As percentage of GDP (%)</i>	36.27	42.26	43.08	45.30	47.17	53.13	53.09	50.48	50.17
- Domestic capital	478	621	723	863	1124	1500	1690	2050	2660
<i>As percentage of total investment capital (%)</i>	78.49	81.28	83.00	82.19	85.80	88.24	88.48	88.36	88.37
- Foreign capital	131	143	148	187	186	200	220	270	350
<i>As percentage of total investment capital (%)</i>	21.51	18.72	17.00	17.81	14.20	11.76	11.52	11.64	11.63
+ FDI	0	0	0	30	50	60	50	70	150
+ ODA	131	143	148	157	136	140	170	200	200
+ Other sources	0	0	0	0	0	0	0	0	0

Source: Quang Tri People's Committee (2005).

CONCLUSIONS

- **A good Regional Cooperation story**
 - **Lessons for border development**
 - **Capitalize on strategic advantages**

