



State Customs Committee
Of the Republic of Azerbaijan

Basic Principles of Establishing SAMS in Customs Service of Azerbaijan Republic

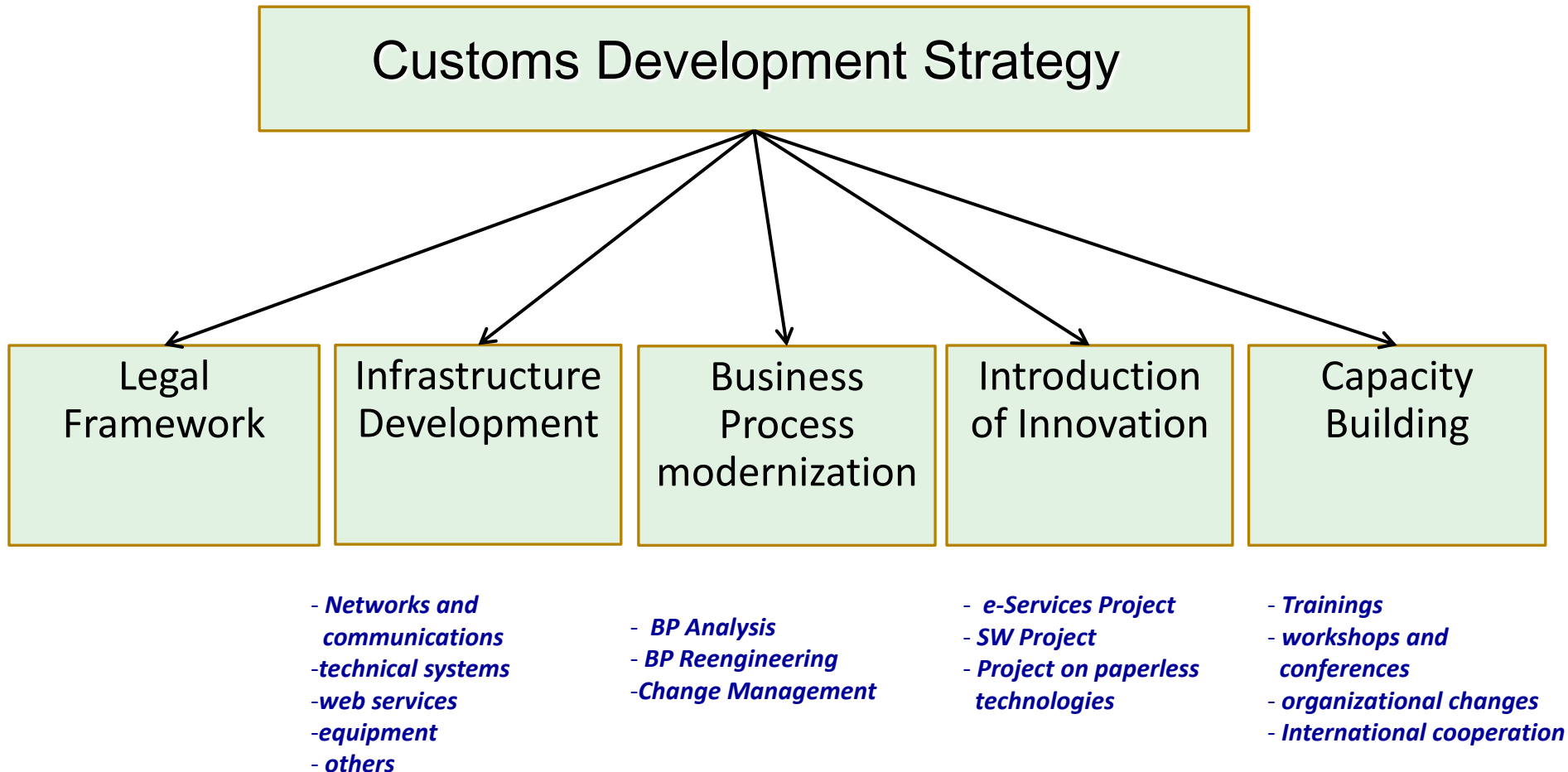
Rauf Guliyev

Head, Project Management Division,
Head Department of Performance Measurement
and Development Programs

▶ e-mail: rauf.guliyev@customs.gov.az



Customs Service Development Strategy



Key Pillars of the Strategy

State Program

State Program on Customs Systems Development in RA (2007-2011)

Decree of the President No.12 of 11 November 2009

Application of Single Window Principle in the Inspection of Goods and Vehicles Moved through State Border Crossing Points of the RA

Decree of the President No.429 of 23 May 2011

Decree of the President of the Azerbaijan Republic On Certain Measures Related to Organization of Electronic Services Provision by Government Agencies

Decree of the President of 15 September 2011

Decree of the President of the Azerbaijan Republic On Approval of the Customs Code of the RA

Decree of the President of 25 February 2011

On Certain Measures to Simplify Procedures and Improve Transparency in Customs Affairs

***Decree of the President of the Azerbaijan Republic
On Establishing Coordination Council of Azerbaijan Republic
on Transit Traffic***

***No. 655
21 October 2015***

- 1. Establishing a Coordination Council** of the Azerbaijan Republic on Transit Traffic.
-
-
- 4. Apply Single Window principle** to the transportation of transit freight across the territory of the Azerbaijan Republic by means of **rail, maritime transport, sea ports and marine terminals**.
- Vest **the powers of the National Body for the application of Single Window principle** to the transportation of transit freight across the territory of the Azerbaijan Republic by means of rail, maritime transport, sea ports and marine terminals in the Coordination Council of the Azerbaijan Republic on Transit Traffic.



***Order of the President of the Azerbaijan Republic
On Additional Measures Related to the Continued Customs Reform***

No. 1853

Baku, 4 March 2016

- **Ensure acceptance by customs bodies of all declarations, as provided by the Customs Code of the Azerbaijan Republic, in electronic form;**
- **Secure mutual electronic information exchange with selected government authorities in the relevant fields;**
- **Improve Automated Risk Management System**
- **Provide conditions for the movement of goods across customs border on the basis of the veterinary, phytosanitary, sanitary, and other certificates and documents, provided in advance by exporting country, and notify of this the relevant government authorities;**
- **Take appropriate measures to improve competitiveness and efficiency of the transit corridors, crossing the territory of the RA, and to attract additional transit traffic to such corridors, including the improved quality of cargo transportation and reduced times of cargo delivery;**



***Decree of the President of the Azerbaijan Republic
On Approval of the Rules for the Use of Green Channel and Other Clearance Systems for
Movement of Goods and Vehicles Across the Customs Border***

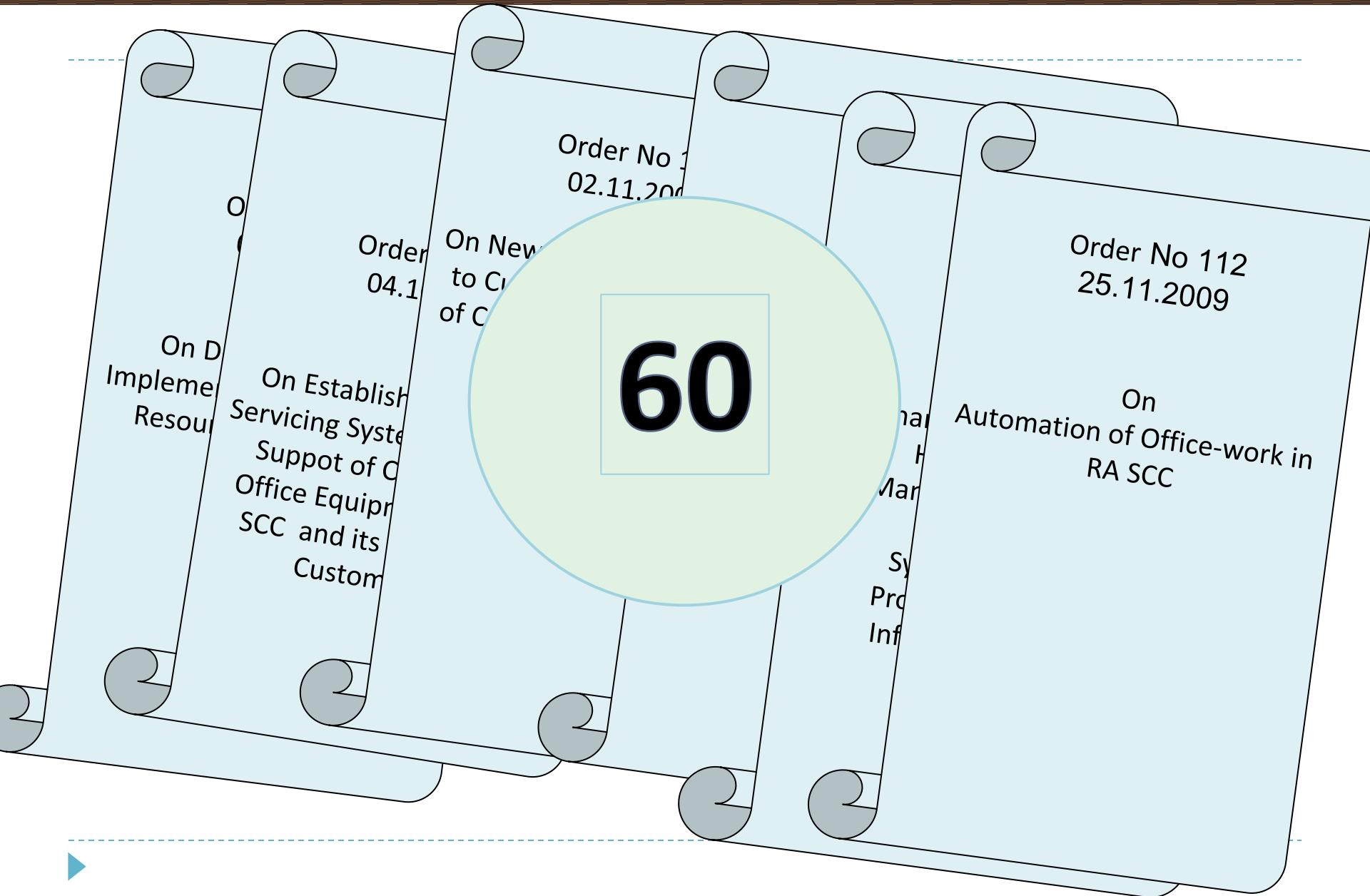
No. 920

Baku, 21 May 2016

- **Approve the Rules for the Use of Green Channel and Other Clearance Systems for Movement of Goods and Vehicles Across the Customs Border.**
 - **State Customs Committee of the Azerbaijan Republic shall, within the two-months time, take measures to establish the appropriate infrastructure for the application of the clearance systems as provided by the Rules approved hereby.**
-



Regulations



Order No
02.11.200

Order No 04.1
On New
to C
of C

Order No 112
25.11.2009

On
Automation of Office-work in
RA SCC

60

On D
Impleme
Resour
On Establish
Servicing System
Support of C
Office Equipm
SCC and its
Custom

na
H
Mar
Sy
Pro
Inf

Infrastructure Development



Infrastructure Development and Technological Improvements

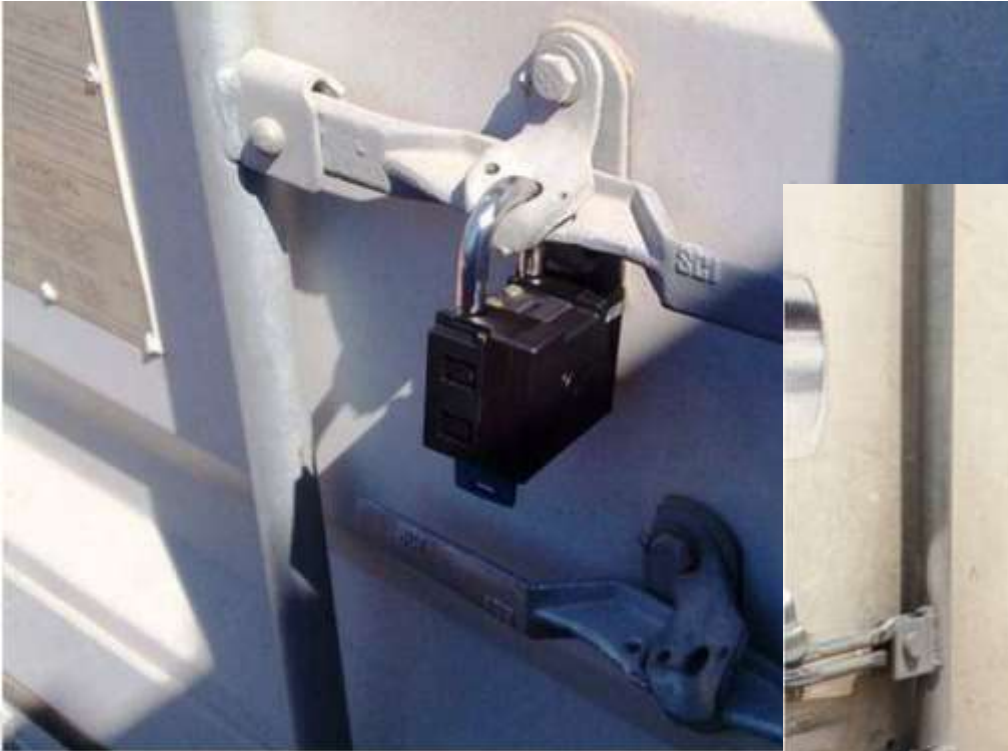


Corporate Network Connecting Customs Bodies With Fiber-Optic Lines



- Regional Customhouses – Gömrük idarələri
- Customs clearance posts – Gömrük proseduralarının rəsmiləşdirilməsi postları
- ▲ Border checkpoints – Sərhəd buraxılış məntəqələri
- ◆ Internal customs checkpoints – Ölkə daxili gömrük məntəqələri

Vehicle Tracking System



Mobile Customs Teams



Transit Movement Tracking Map

Firefox 192.168.253.200/gps/

GPS monitoring
Nəqliyyatın GPS monitorinqi sistemi və digər aktivlər

Giriş vərinə yətirmisizdir. Admin [Malumat](#)
[ArcGIS Resources](#)

Əlavə olaraq... [Böcə xəritəsi](#)

GPS monitoring

Menecer Obyektlər Monitor Simvolika Parametrlər

Qal Watchclocks Filtr

Seriya №- si Bütün sütunlar

Seriya №- si	GPS vaxtı	Enerji...	Sürət	P...	Tre...	Qrup
417626	00:58:00, 21.10.2013	aşağı(21%)	0	7	1566	B
417287	00:45:95, 21.10.2013	aşağı(12%)	87	7	1336	B
417506	00:44:53, 21.10.2013	aşağı(20%)	0	7	1478	B
417359	00:06:49, 21.10.2013	aşağı(1%)	78	7	1423	B
417505	00:04:27, 21.10.2013	aşağı(2%)	0	7	1475	B
559068	23:57:53, 20.10.2013	aşağı(13%)	81	7	1096	B

Bütün obyektlər: 301 yəni işləməyə

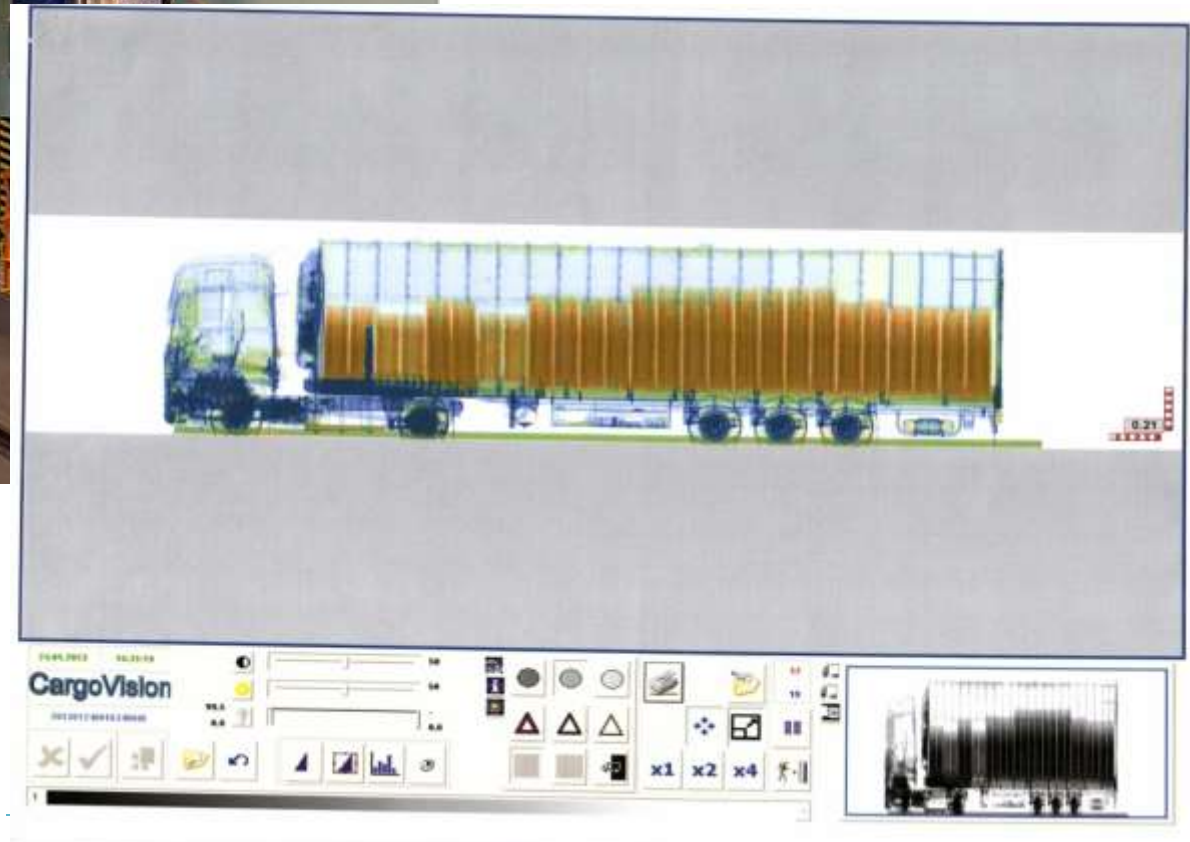
(c) avtomatik yeniləməsi 20

© OpenStreetMap contributors

Trek	Vaxt	Seriya №- si	Tip	Məlumat	aler...
1315	13:29:05, 22.10.2013	417246	417246 Akumulyatorun enerjisi	Zəif enerji(29%)	<input type="checkbox"/>
1878	13:27:38, 22.10.2013	417941	417941 Akumulyatorun enerjisi	Zəif enerji(29%)	<input type="checkbox"/>

Bəs signalını qoşun

Vehicle Scanning



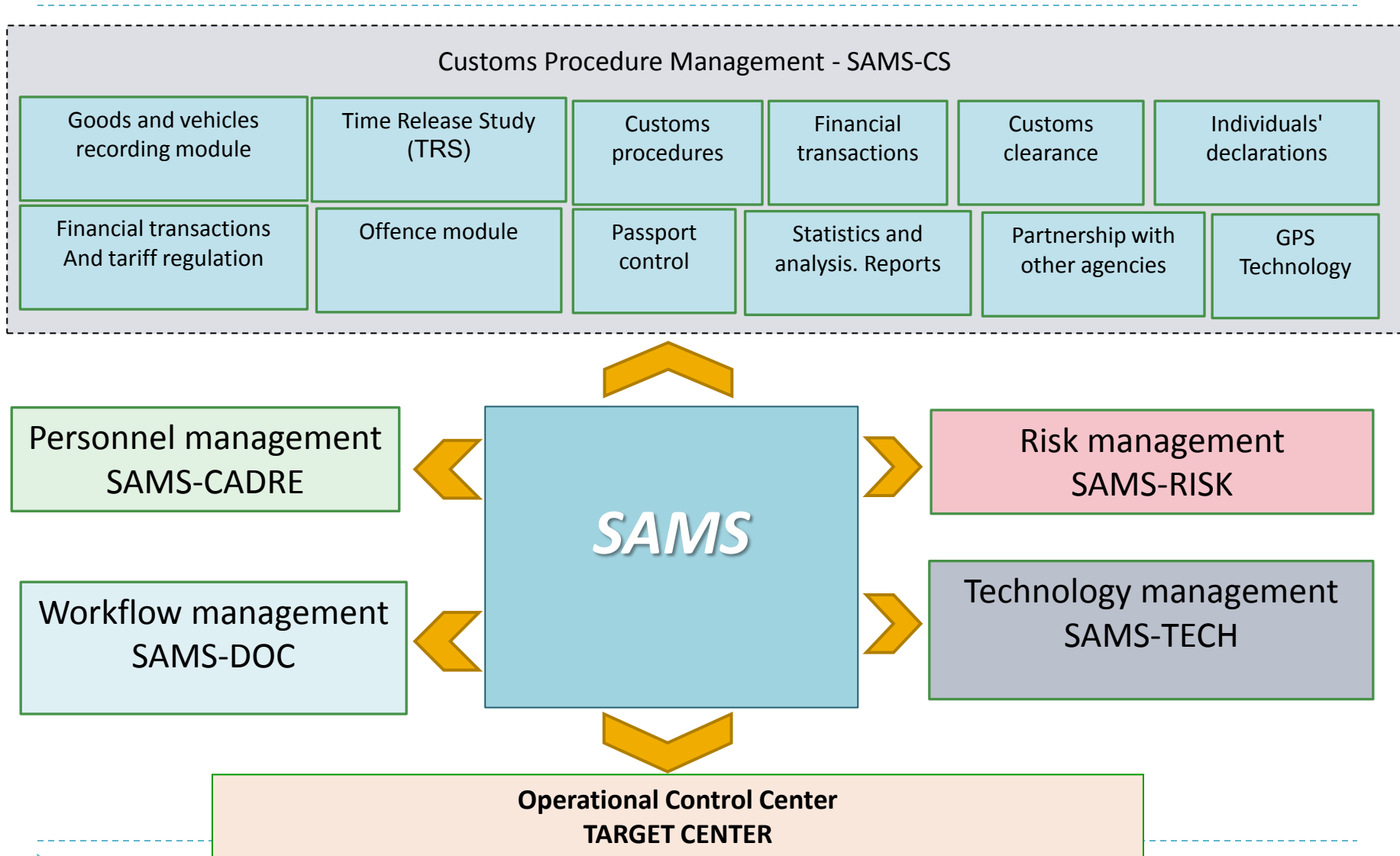
RA SCC Border Crossing Point Infrastructure



Operational Control Center



SAMS Development Concept



Innovation Projects

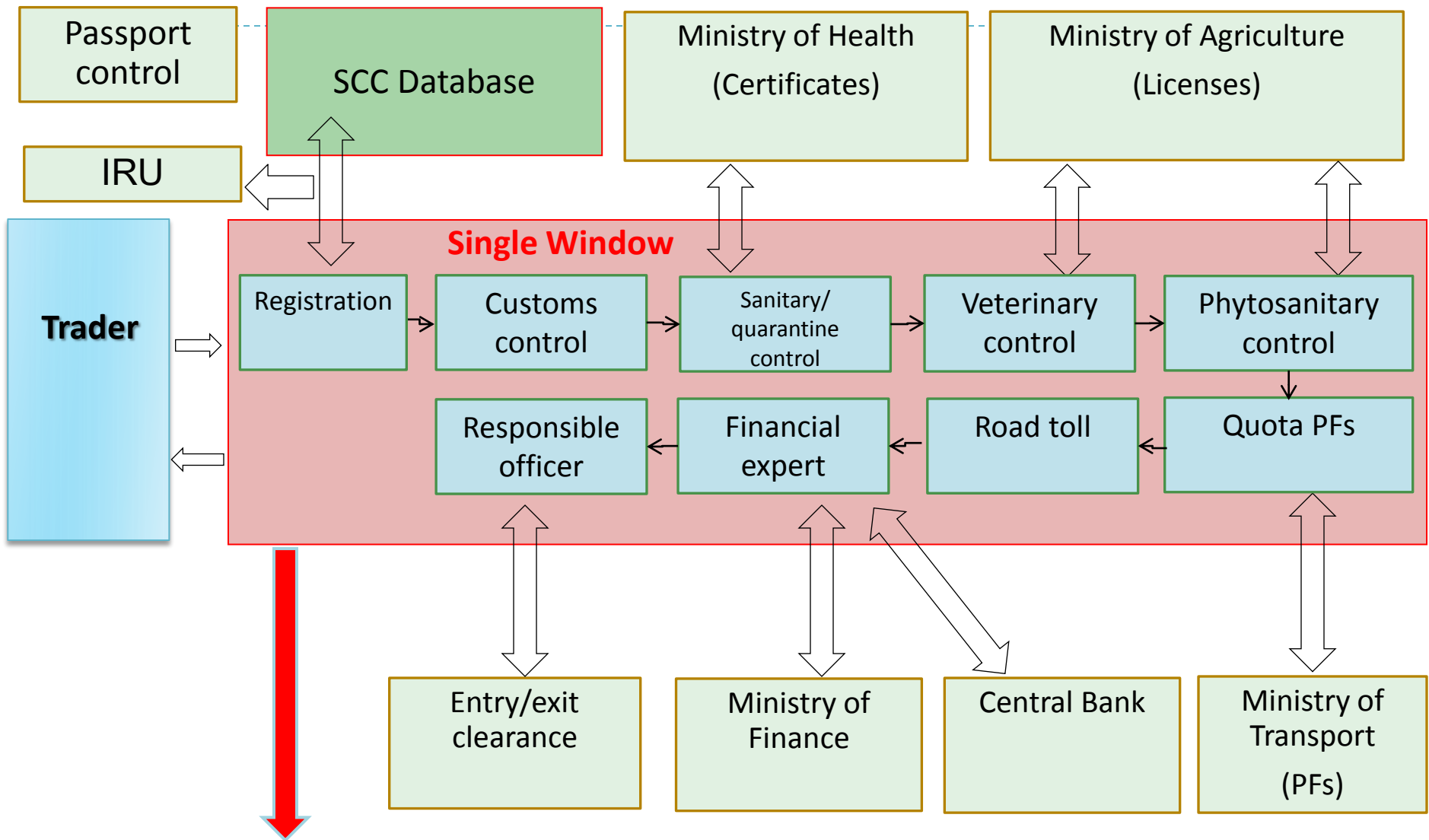
1. SINGLE WINDOW

Decree of the President No.12 of 11 November 2009

Application of Single Window Principle in the Inspection of Goods and Vehicles Moved through State Border Crossing Points of the Azerbaijan Republic



Operation of Single Window AMS

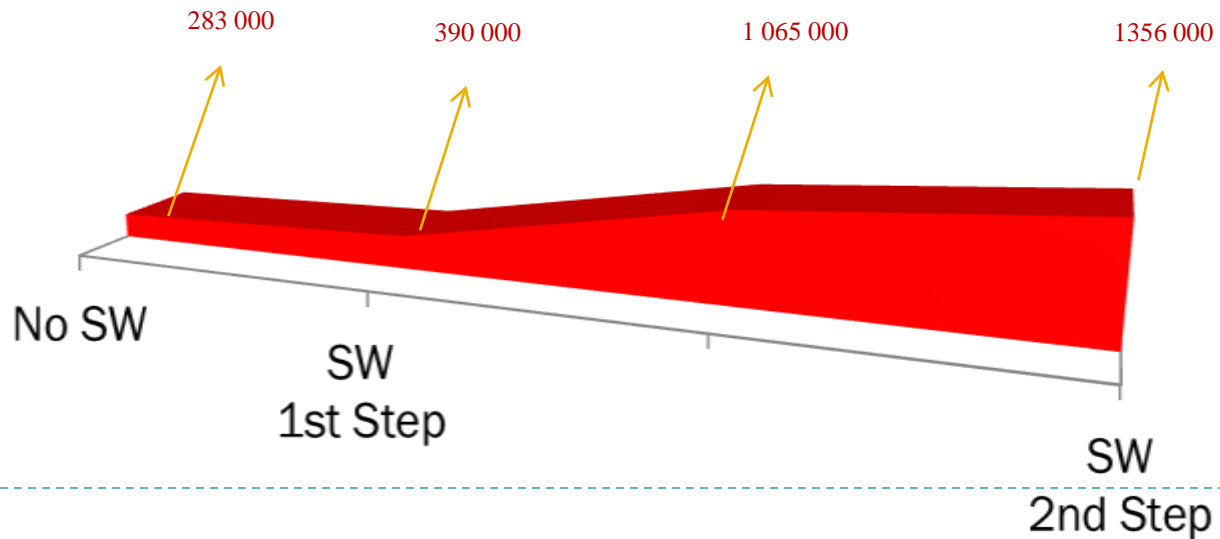


Single Window Implementation Results

Difference in goods release times



Number of vehicles



Electronic Signature and Information Security

Order No 138
22.12.2008

On the Use of
Electronic Signature
in the Customs
Corporate
Information System



To provide information security when using the customs information system and SCC information resources, all customs employees working with SAMS use **2683** electronic keys.

Advance Information Exchange








- ✓ Georgia– Exchange is exercised
- ✓ RF – Exchange is exercised (only by Azerbaijan)
- ✓ Iran – Protocol signed (February 2016)
- ✓ GUAM – Protocol signed (July 2015)
- ✓ Turkey – Protocol draft
- ✓ Uzbekistan – Protocol draft



C2B - Customs to Business Partnership

Navigation bar: Back, Send to a friend, Print, Homepage, Sitemap

CUSTOMS TO BUSINESS PARTNERSHIP

 <p>Traders private office</p>	 <p>Information for Natural Persons and Legal Entities</p>	 <p>Customs payments</p>
 <p>Time Release Study</p>	 <p>Customs glossary</p>	 <p>Samples of customs documents</p>
 <p>Goods Nomenclature</p>	 <p>Information on light transport means imported to the Republic of Azerbaijan</p>	 <p>How customs officers treat you?</p>

9504



C2B - Customs to Business Partnership



E-CUSTOMS SERVICES

	e - Services	Administrative Regulation
2386	⇒ e - Customs Declaration / Goods	Download Regulation
59100	⇒ e - Pre-arrival Information	Download Regulation
2054	⇒ e - Customs Declaration / Passengers	Download Regulation
170	⇒ e - Monitoring	Download Regulation
	⇒ e - Imports / Exports	Download Regulation
	⇒ e - Customs Examination	Download Regulation
	⇒ Goods Nomenclature	Download Regulation
	⇒ Application for permission to establish duty-free shop	Download Regulation
	⇒ Submission of application and documents to get, to terminate or annihilate the license for operating as customs broker and customs carrier	Download Regulation
	⇒ Submission of application and documents to get, to terminate or annihilate the license for establishing customs warehouses and warehouses of temporary storage	Download Regulation
	⇒ Online monitoring of application and inquiries submitted to the State Customs Committee	Download Regulation
12210	⇒ e - CPPIN	Download Regulation
279332	⇒ e - Customs Payments	Download Regulation
	⇒ Calculation of customs payments for import of light vehicles	Download Regulation



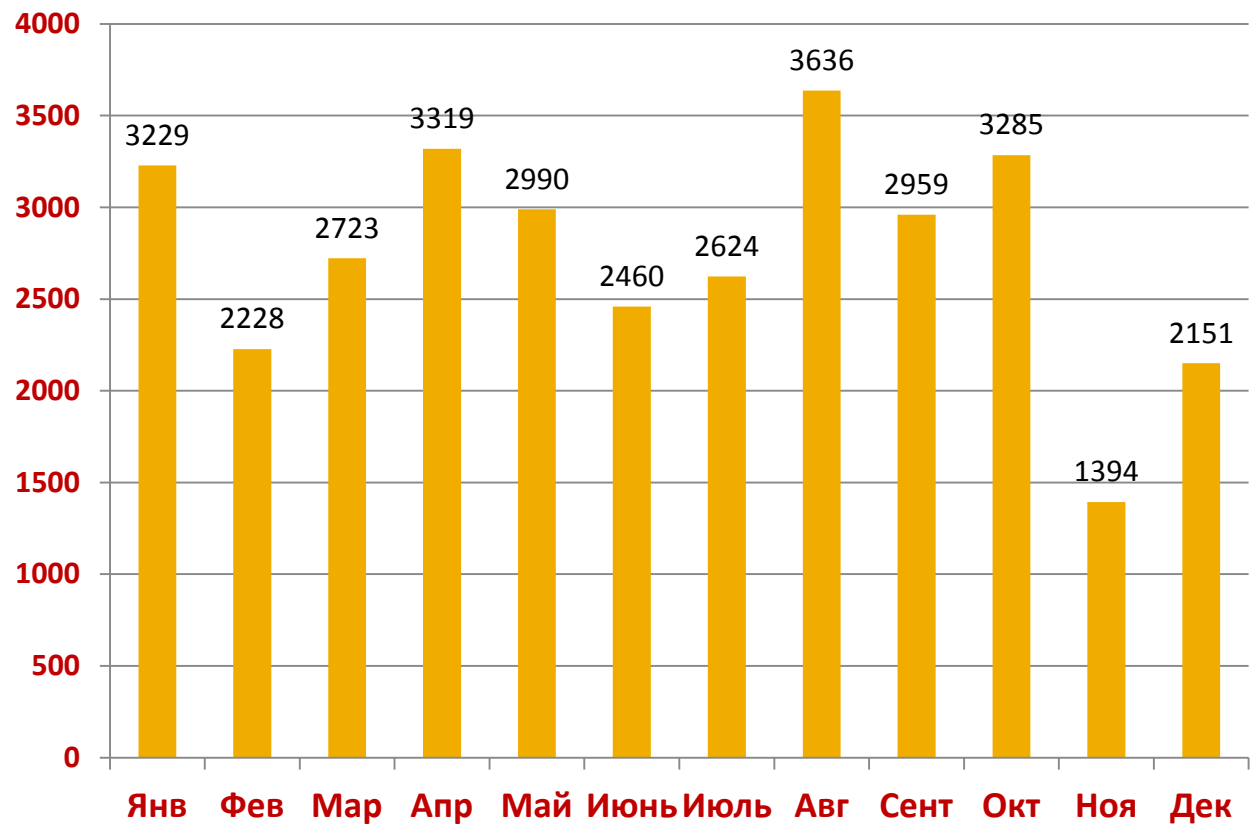
C2B - Customs to Business Partnership



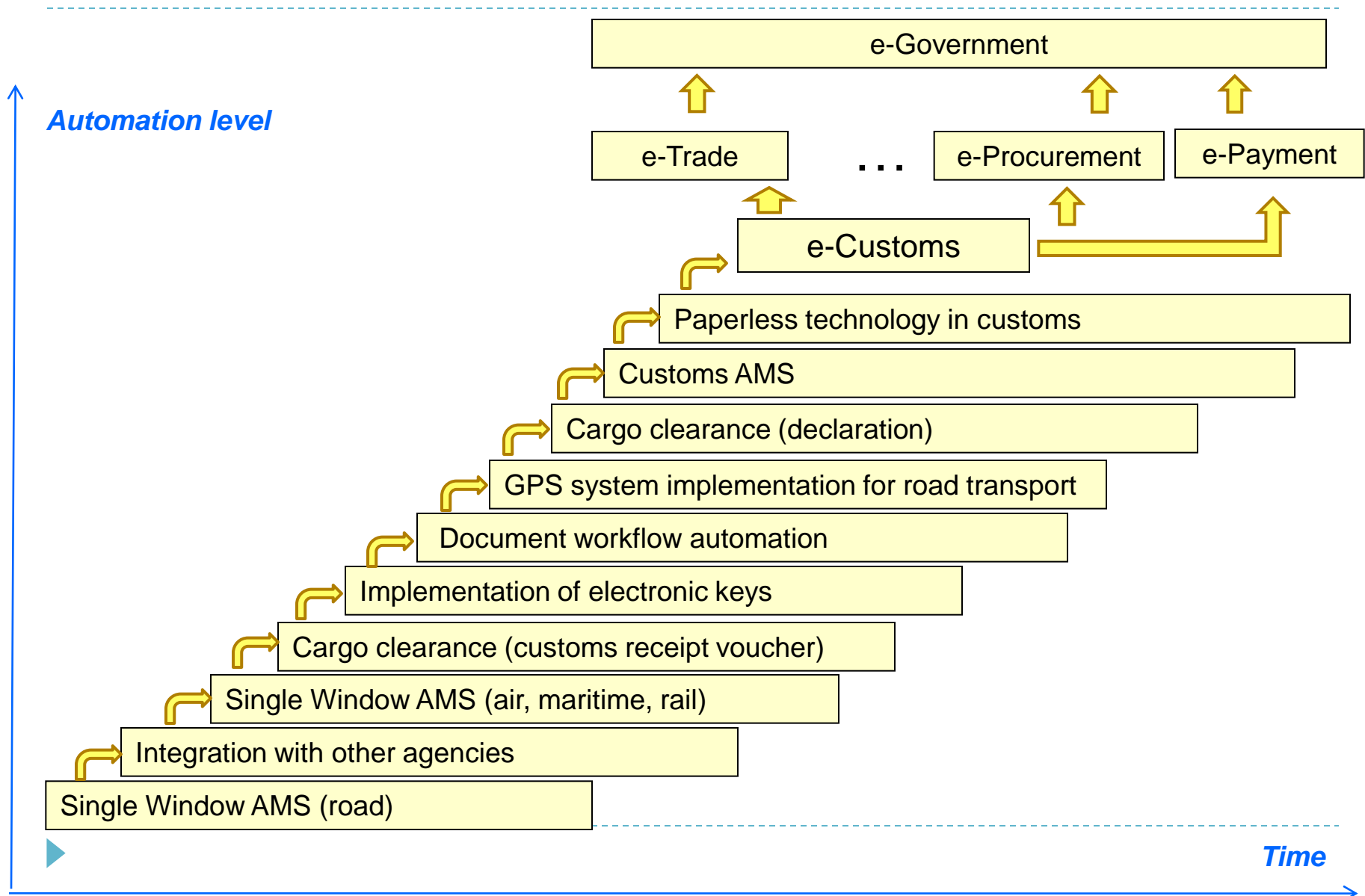
Total: 59100

Azerbaijan: - **42741**

Foreigners. - **16359**



Динамика развития ГТК РА



Time Release Study (TRS)

Background and Rationale



World Customs Organization
Organisation Mondiale des Douanes

Objective: Establish legal and technical framework for time release studies in countries.

Brief description: Time Release Study is a unique tool and method for measuring the actual performance of Customs activities as they directly relate to trade facilitation at the border. The TRS thereby measures relevant aspects of the effectiveness of operational procedures that are carried out by Customs and other regulatory actors in the standard processing of imports, exports and in transit movements. It seeks to accurately measure these elements of trade flows so that related decisions to improve such performance can be well conceived and thereby carried out.

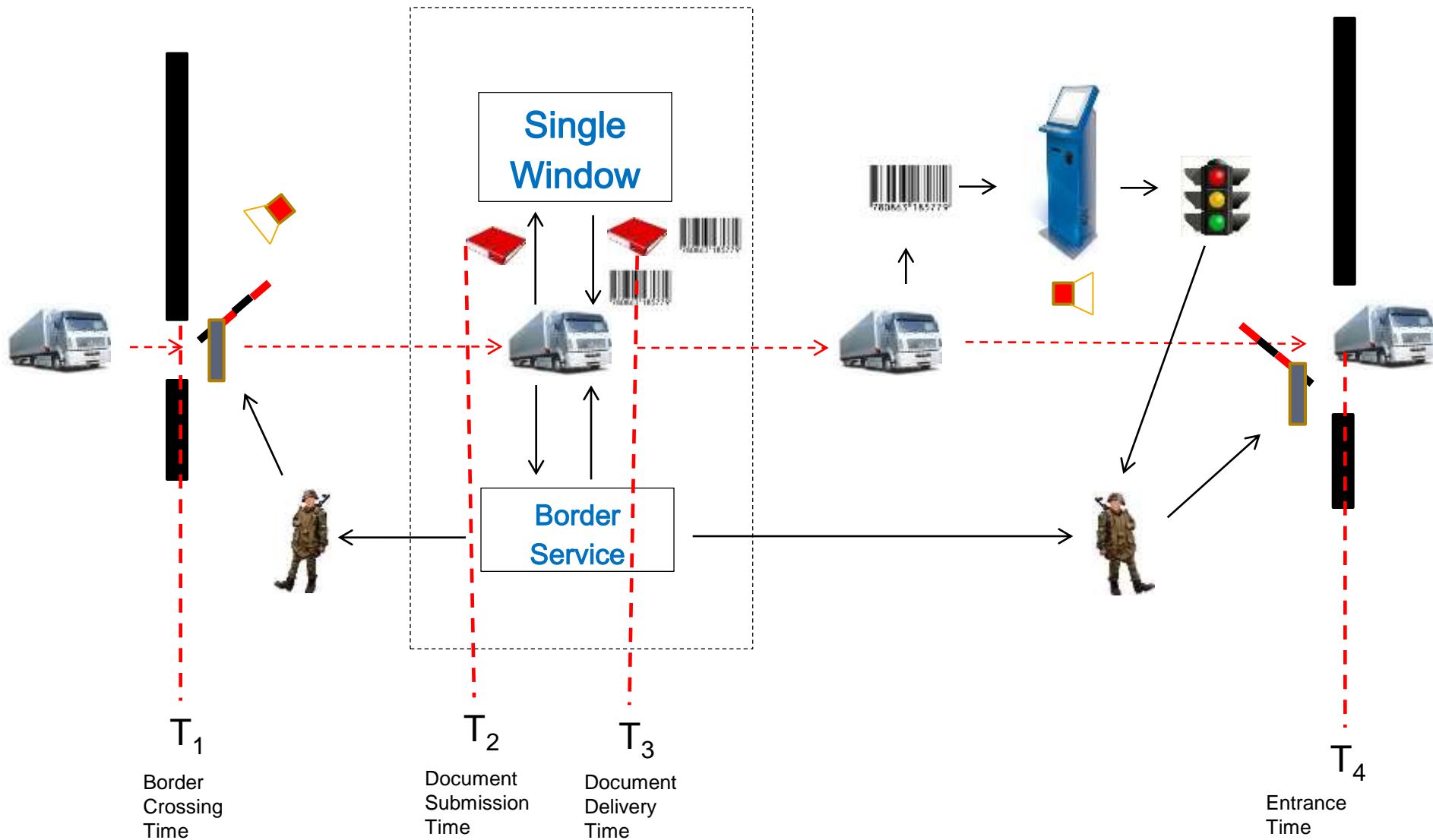
Solution: For this purpose, in some countries, Time Release Study tools have been developed. A number of WCO members such as Australia, Japan, Korea, New Zealand and Serbia have undertaken TRS, with some Members regularly conducting one. The WCO Secretariat has provided developing Members such as Kenya, Tanzania, Uganda and Lesotho with technical assistance to design, plan and implementation of a national TRS.

GUIDE TO MEASURE THE TIME REQUIRED FOR THE RELEASE OF GOODS

WORLD CUSTOMS ORGANIZATION

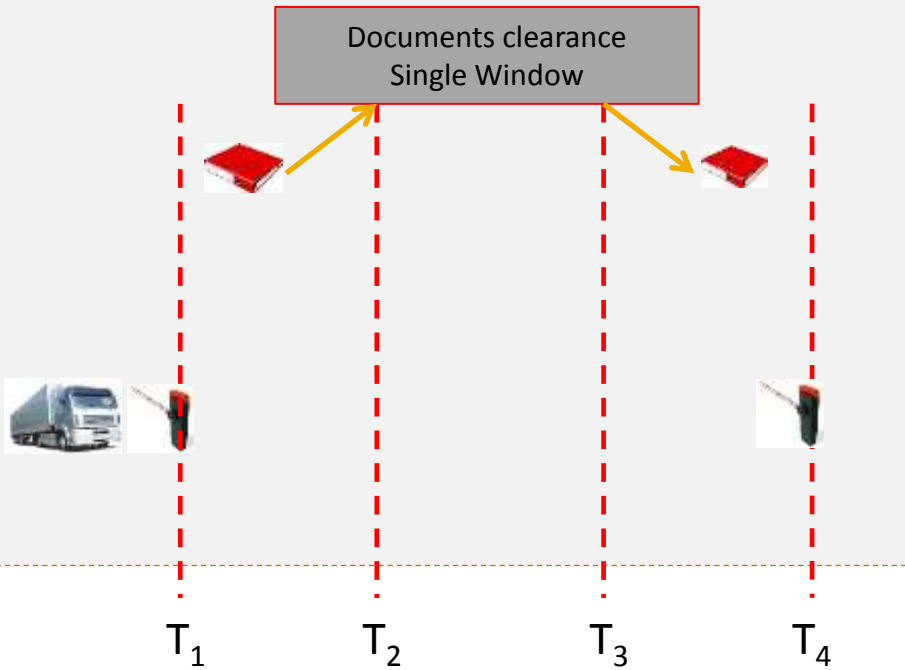


Time Release Study (TRS)



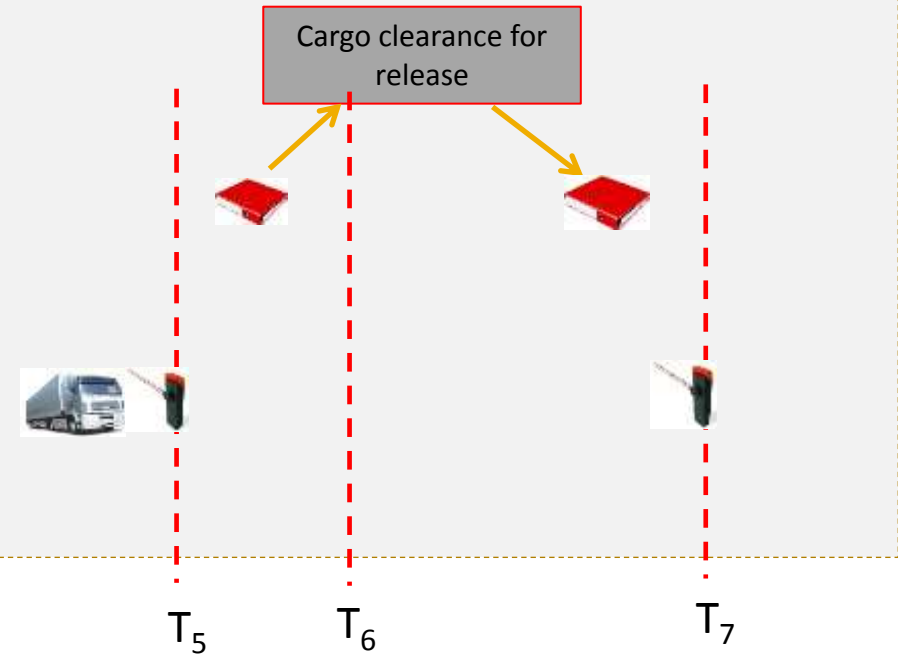
Time Release Study (TRS)

Customs station on border



T_1 Border crossing date
 T_2 Documents lodging date
 T_3 Documents Receipt date
 T_4 Date of entry to the country

Customs station of destination



T_5 Date of entry to the clearance station
 T_6 Date of lodging the documents for clearance of goods
 T_7 Goods release date

Time of passing through customs control at the border

$$\Rightarrow T_{TK} = T_4 - T_1$$

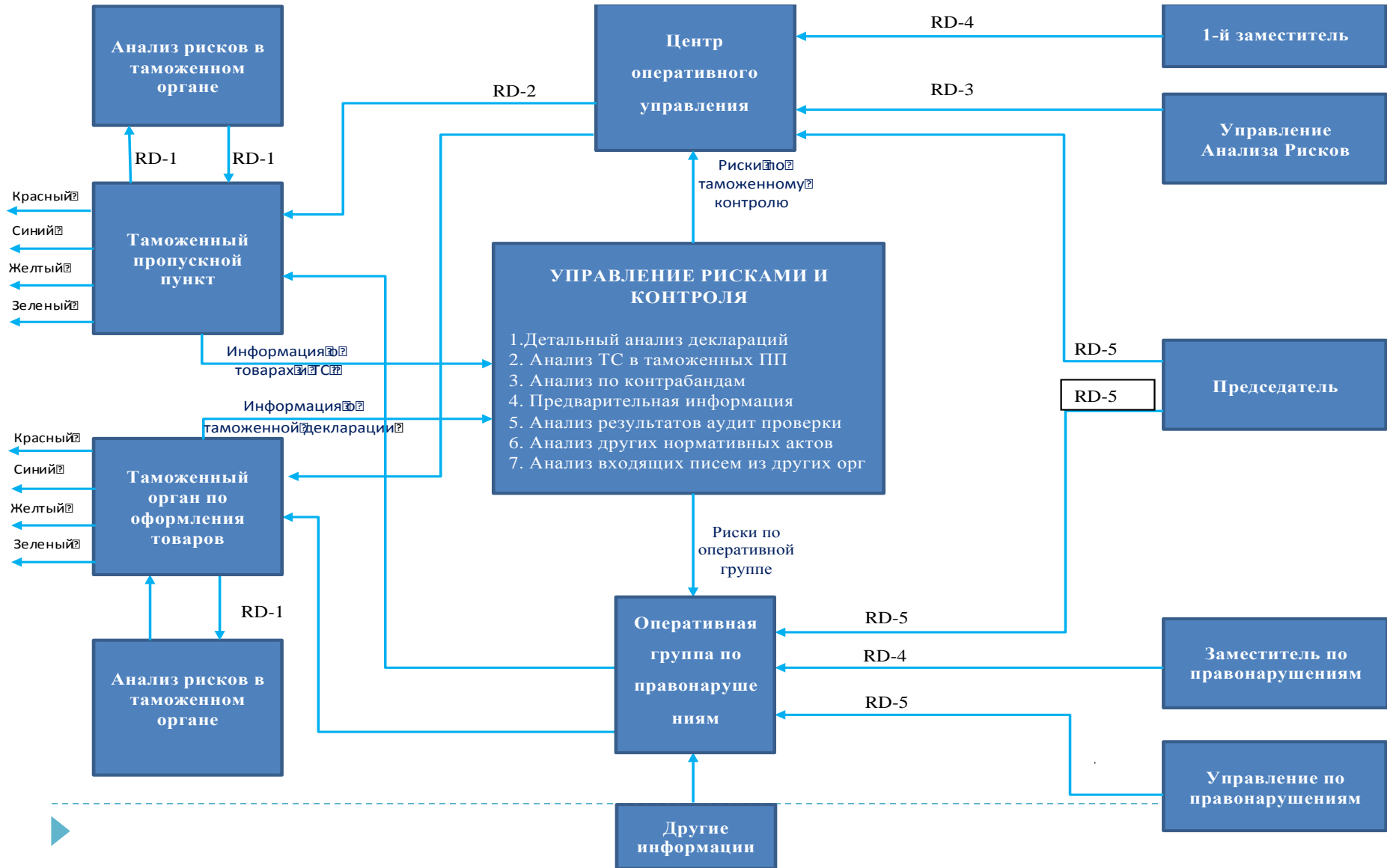
Time of customs clearance RELEASE of goods

$$\Rightarrow T_{TO} = T_7 - T_5$$

Time of customs clearance RELEASE of goods

$$T_{\text{ВЫП}} = T_{TK} + T_{TO}$$

Risk Management in Customs Operation



Risk Management in Customs Operation

Customs Clearance

	Document check	Goods inspection	Post-release audit
Green	—	—	—
Blue	—	—	+
Yellow	+	—	—
Red	+	+	—



Risk Management in Customs Operation

At Border Crossing Point

Activity \ Channel	Document check	GPS	X-RAY scanning	Physical comprehensive team
Green	—	—	—	—
Yellow	+	+	—	—
Red	+	+	+	— + (with arrows from X-RAY scanning)



**Thank you
For attention!**

