



21st Transport Sector Coordinating Committee Meeting

22–23 April 2024 • Almaty, Kazakhstan

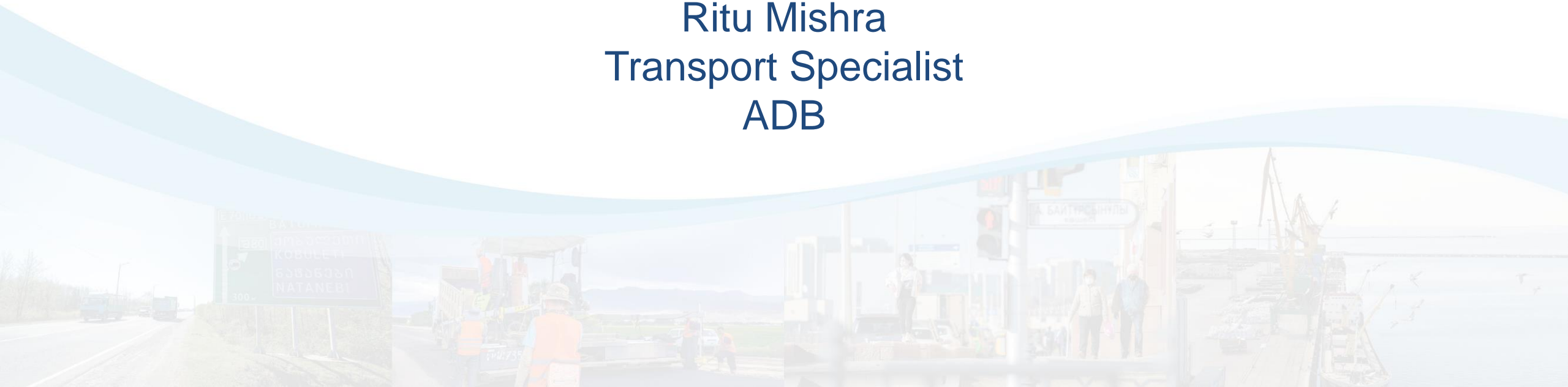
21-е заседание Координационного комитета по транспортному сектору

22–23 апреля 2024 года • Алматы, Казахстан



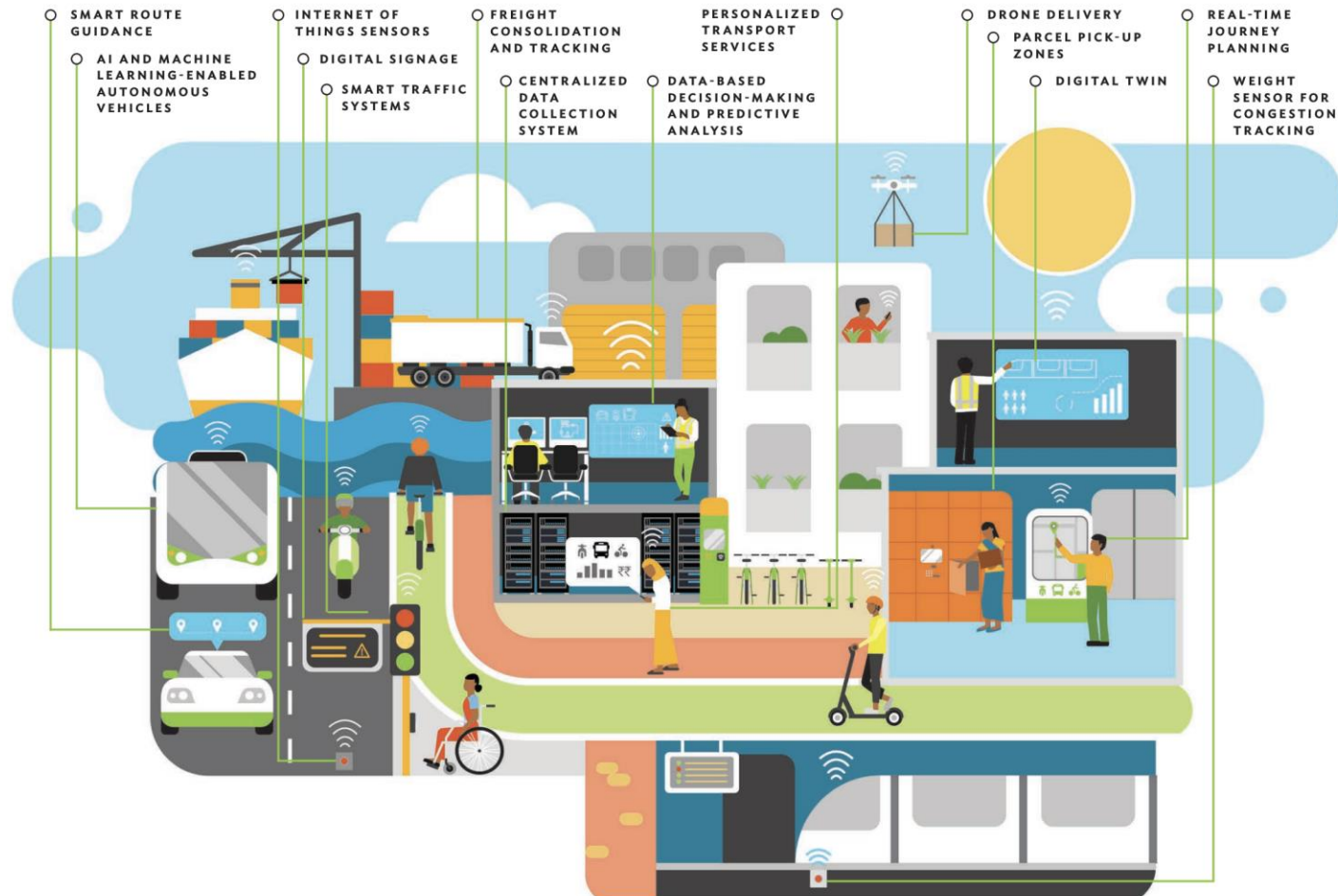
Transport Emerging Areas for the CAREC Region

Ritu Mishra
Transport Specialist
ADB



TECHNOLOGY ENABLED TRANSPORT SERVICES

- Transport must embrace and adopt mobility innovations that are driven by clear outcome-led planning to address specific social, environmental, and economic needs of transport users.



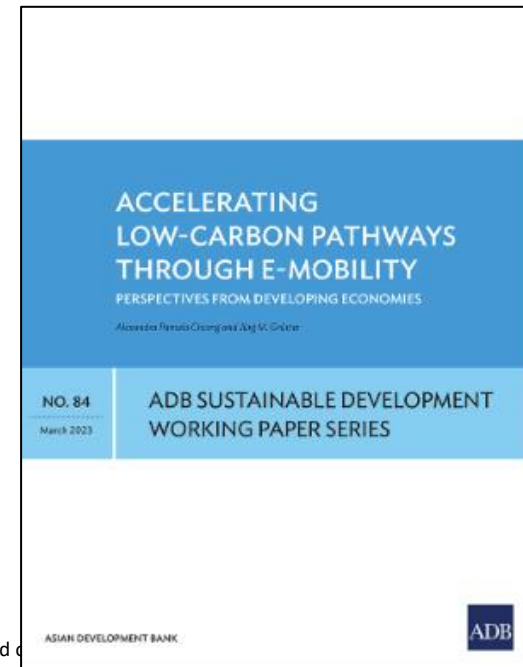
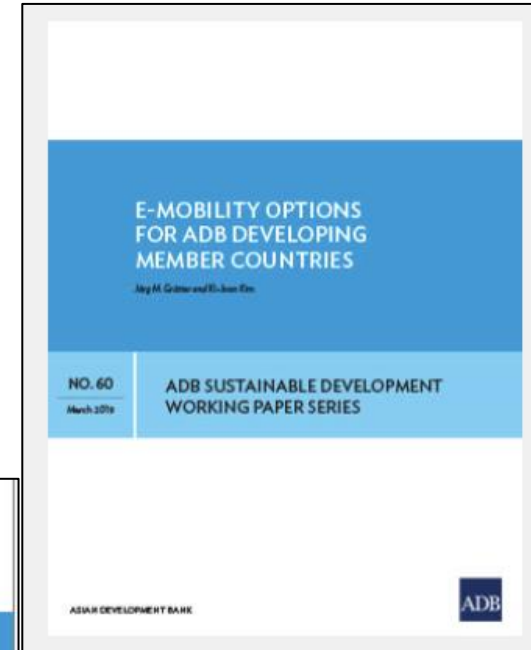
Source: ADB

E-MOBILITY

- supporting e-mobility readiness for CAREC corridor;
- supporting e-mobility readiness for individual countries;
- E-bus projects
- Greening the freight (strategies and technologies)
- and enhance supply chain for EV.

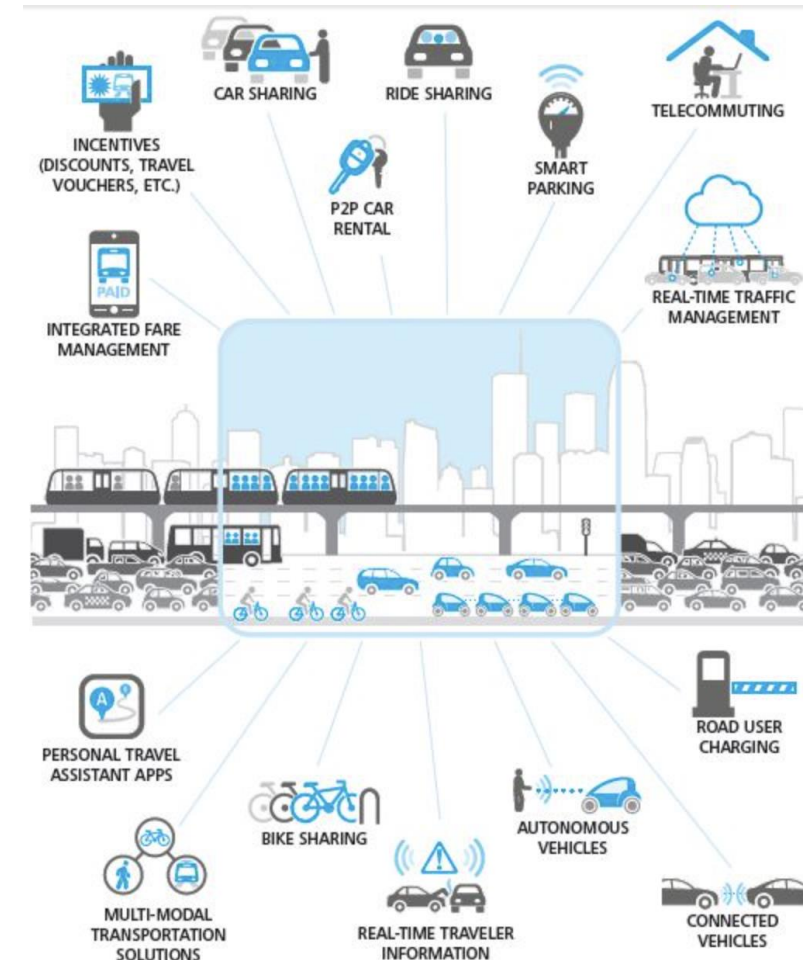
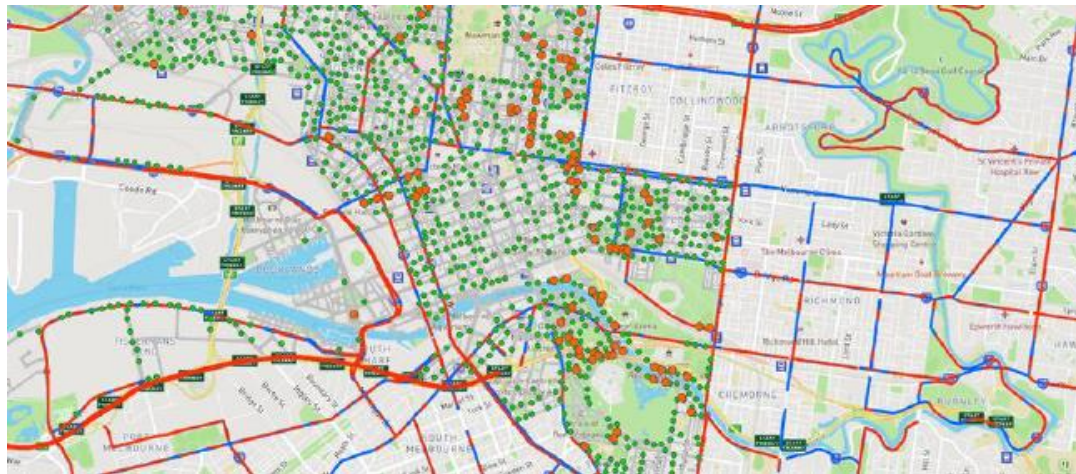


Source: AVL



USE OF BIG DATA

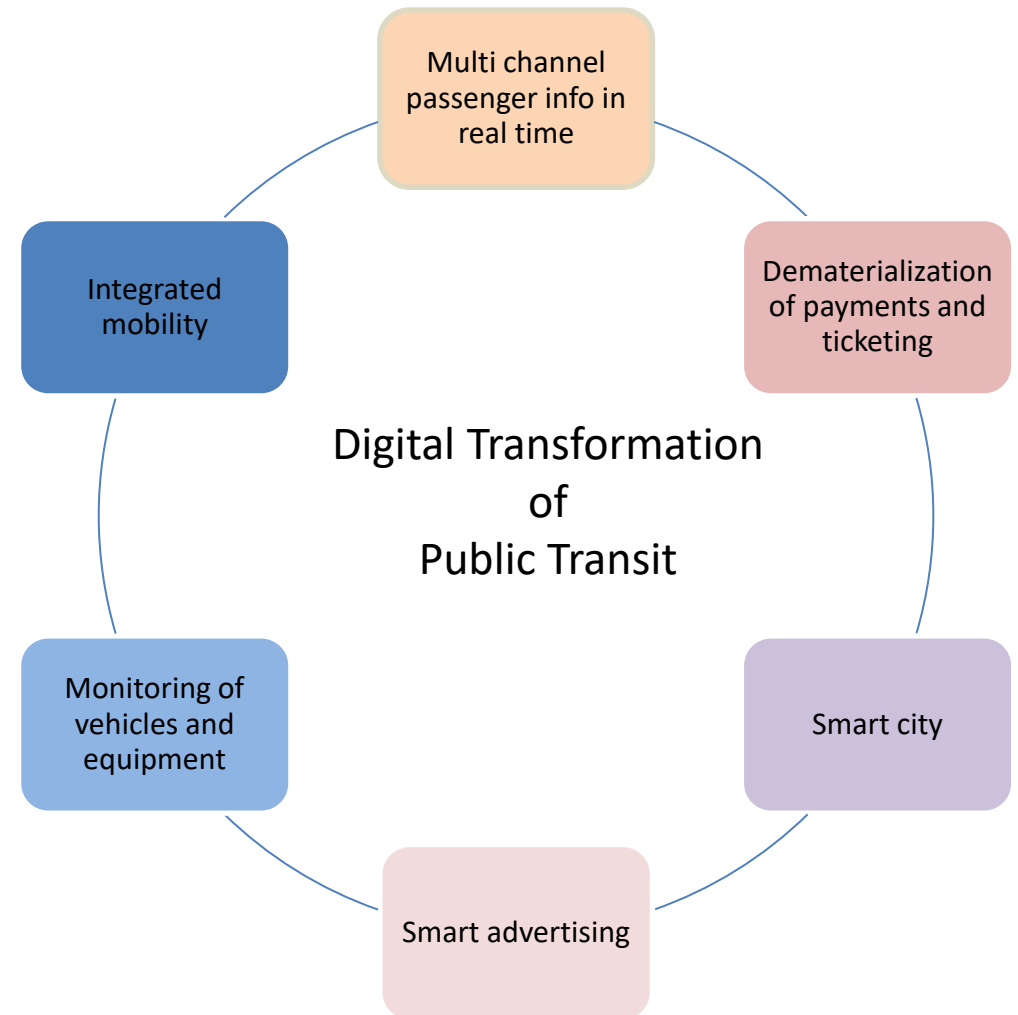
- Data-analytics platform showing travel demand forecasting
- Mobility mapping for CAREC corridors or individual countries.
- Geohazard mapping of road networks.
- Infrastructure monitoring with inclusion of emergency and incident management.



Source: consultancy.uk

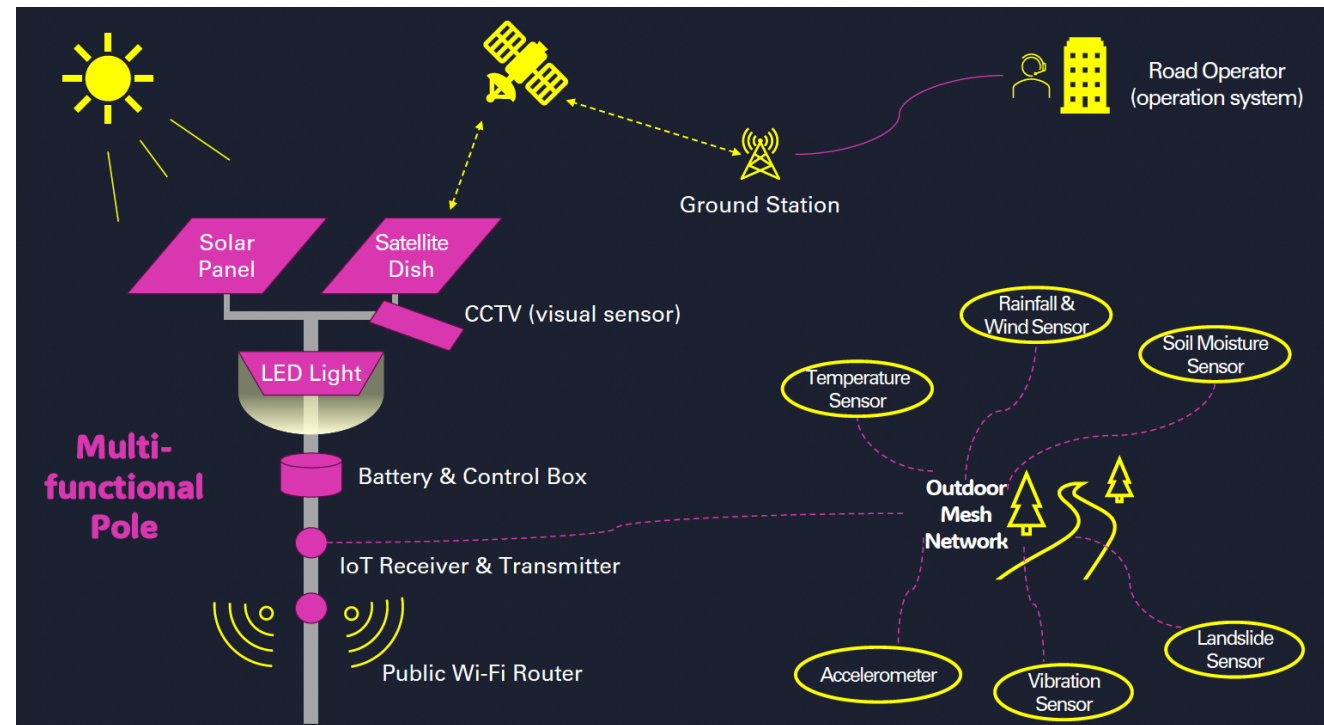
DIGITAL TRANSPORT TECHNOLOGY IN ROAD TRANSPORT

- Digital transformation strategy for each country.
 - Infrastructure Design to support the digitization of the transport sector;
 - Digital Connectivity to enhance communication, data sharing, and coordination
 - Propose policies and guidelines
 - Regulatory reforms
 - Investments
 - Smart Technologies: integrate solutions such as Internet of Things (IoT), AI, and blockchain
 - Intermodal integration to optimize freight handling, improve intermodal connections, and enhance customs clearance through digital solutions.



ITS AND SMART MOBILITY

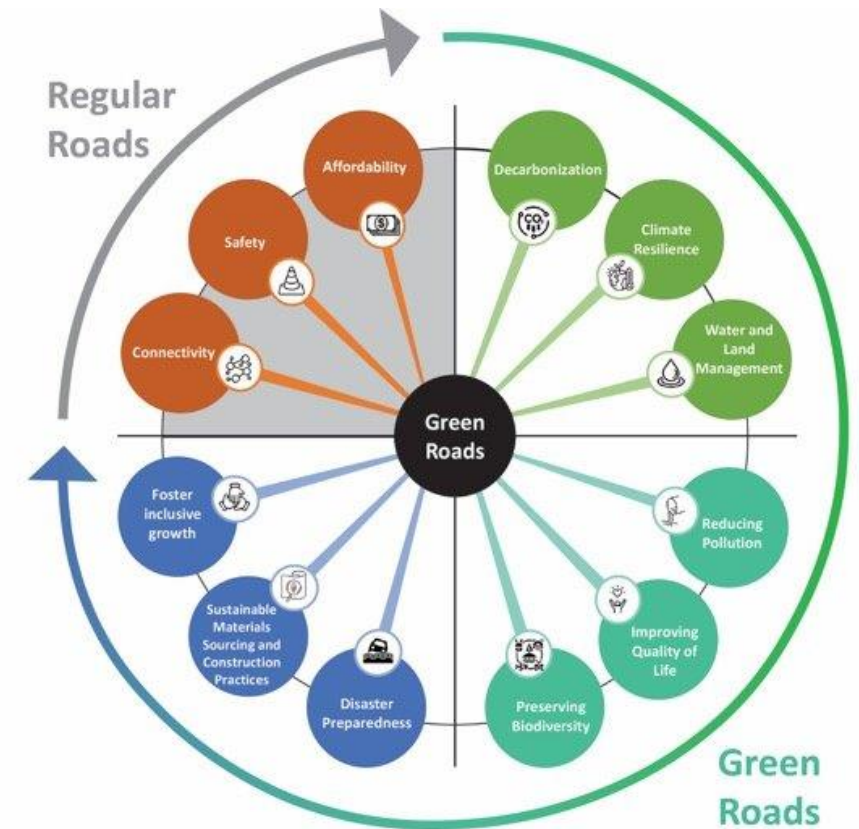
- Advanced traffic management systems.
- Mobility as a Service (MaaS)-Trends and Future Directions.
- vehicle to Infrastructure (V2I) Communication technologies.
- ITS Role in Climate Change Adaptation and Mitigation.



Source: Jiwoon Kang, ADB

ENVIRONMENTAL MANAGEMENT & CLIMATE RESILIENCE

- Strategies for natural disaster recovery in transport
- GHG Reduction in transport: strategies and case studies
- Climate change adaptation for road infrastructure
- National strategies for greener transport
- Strategies for reducing the carbon footprint of road pavements
- Implementation of Green Roads Initiatives



Source: ADB, Meta Meta, IRF

Suggestions are welcome

Thank you!

