



# 20th Transport Sector Coordinating Committee Meeting

24–25 May 2023 • Tbilisi, Georgia

## 20-е заседание Координационного комитета по транспортному сектору

24–25 мая 2023 года • Тбилиси, Грузия



**20th Transport Sector Coordinating  
Committee Meeting**

24–25 May 2023 • Tbilisi, Georgia



**20-е заседание Координационного комитета  
по транспортному сектору**

24–25 мая 2023 года • Тбилиси, Грузия

# **Improving cross-border transportation between Azerbaijan and Georgia**

**Giorgi Doborjginidze**

Logistics & Trade Facilitation Expert



# OUTLINE

- ✓ Trends in the Middle Corridor
- ✓ Cross-border traffic performance
- ✓ Case study- Red bridge
- ✓ Concept of joint border crossing



# CURRENT TRENDS IN THE MIDDLE CORRIDOR (MC)

Increase of traffic flows

Growing containerized trade

Capacity limits in the ports

Digitalization of transport documents



**Diversion of freight flows** toward the Middle Corridor results in border delays and increased transit time of goods



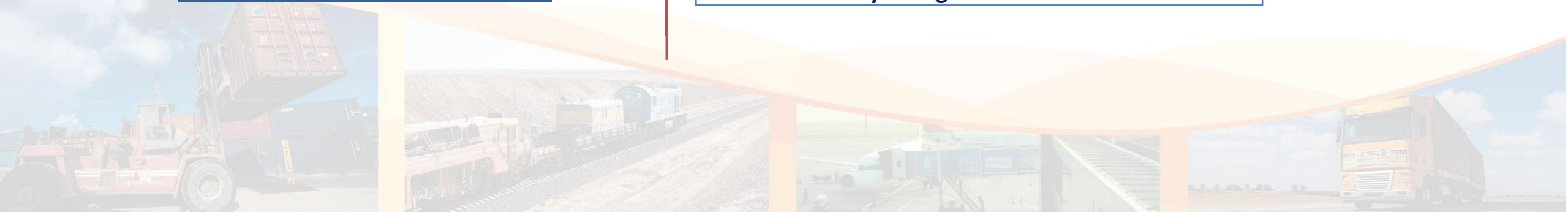
**Growing railway container traffic in the corridor** requires improvement of the intramodality of the transport system



Georgian Black Sea ports **reaching their capacity limits**. Extension of container terminal capacities in Caspian ports needed



**Digitalization of transport documents** creates opportunities for improved cross-border traffic and reliability of logistics services

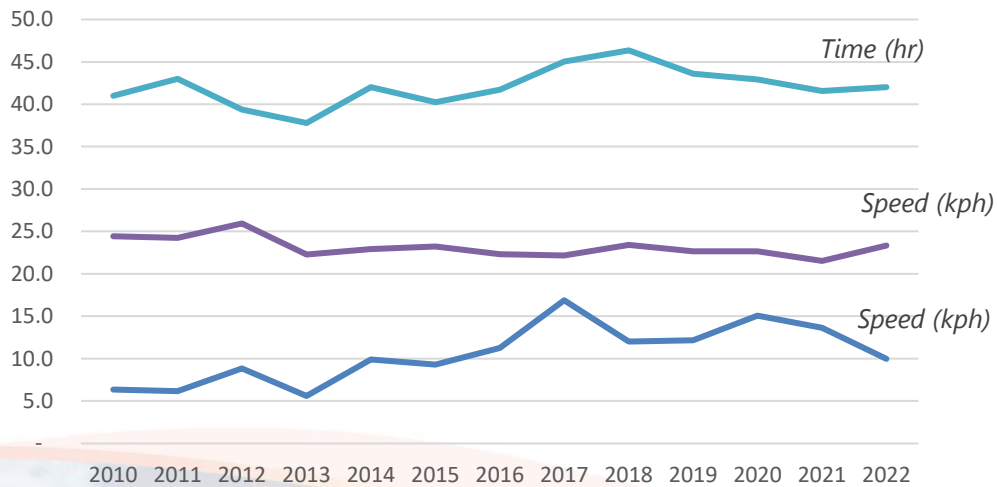




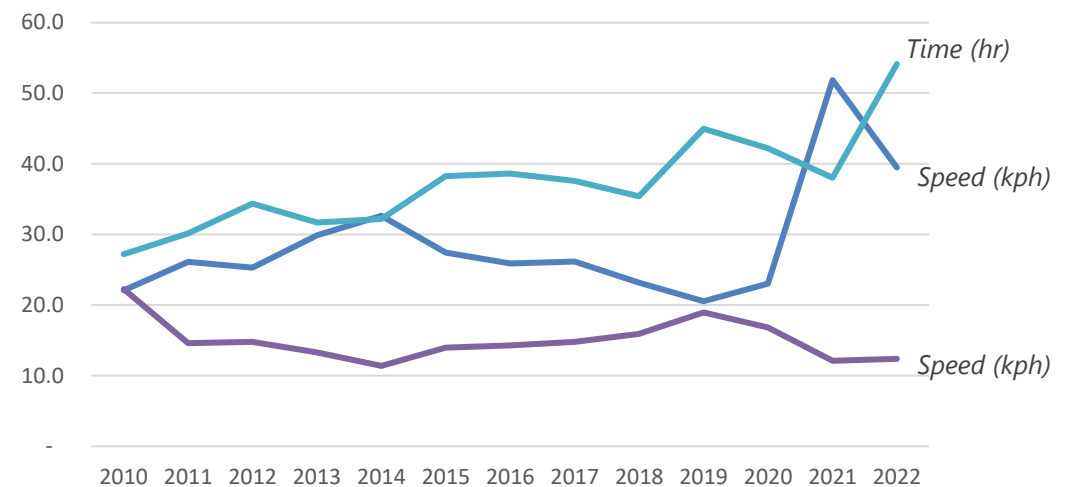
# CROSS-BORDER TRAFFIC PERFORMANCE IN CAREC

Long border-crossing times result in the reduced transportation speed of vehicles

**ROAD CROSS-BORDER TRAFFIC PERFORMANCE**



**RAIL CROSS-BORDER TRAFFIC PERFORMANCE**



Source: CPMM

TFI1 TFI4 SWOD

TFI1 TFI4 SWOD

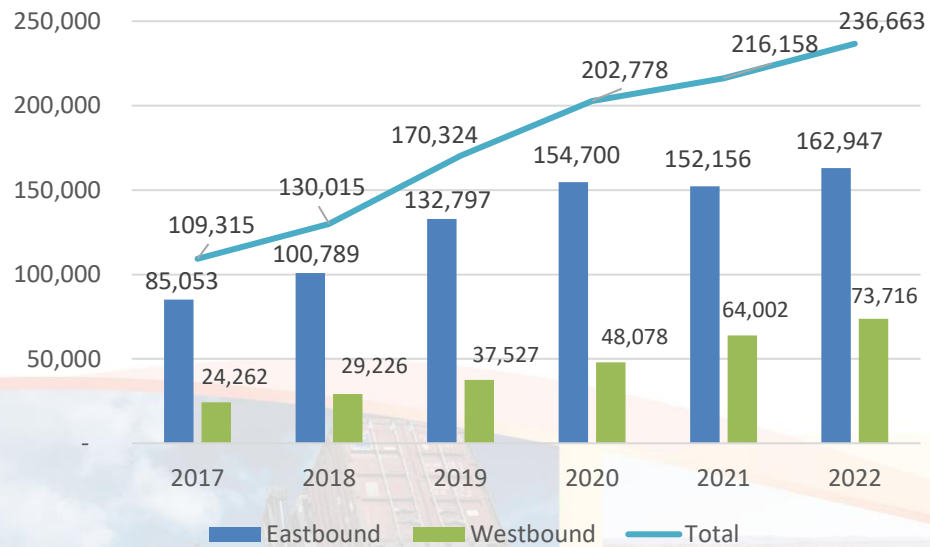
TFI1	Time taken to clear a border crossing point (hr)
TFI4	Speed to travel on CAREC Corridors (kph)
SWOD	Speed without delay

# CROSS-BORDER TRAFFIC THROUGH RED BRIDGE BCP

Diversion of traffic to MC results in the dramatic increase of cross-border traffic between Azerbaijan & Georgia

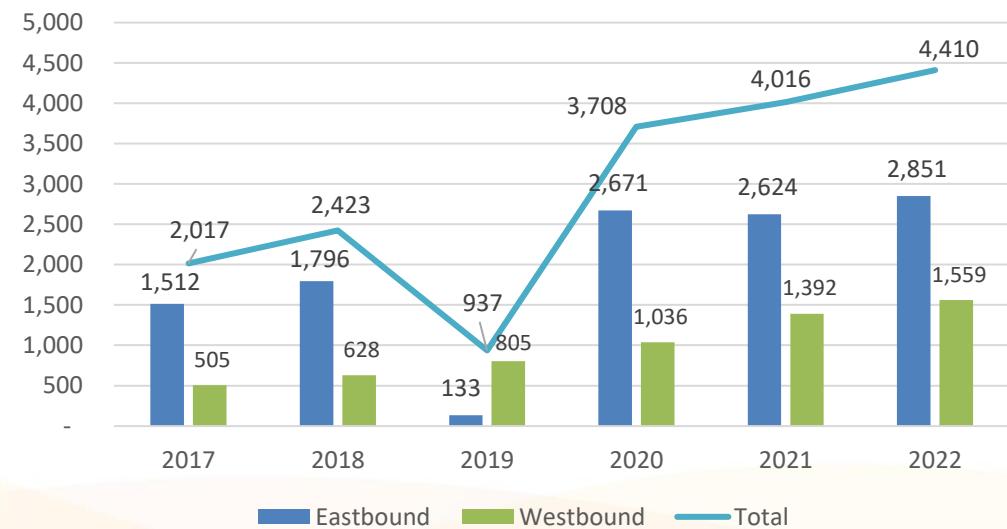
### TRANSIT TRAFFIC THROUGH RED BRIDGE BCP

Number of vehicles



### TRANSIT VOLUMES THROUGH RED BRIDGE BCP

000 tons



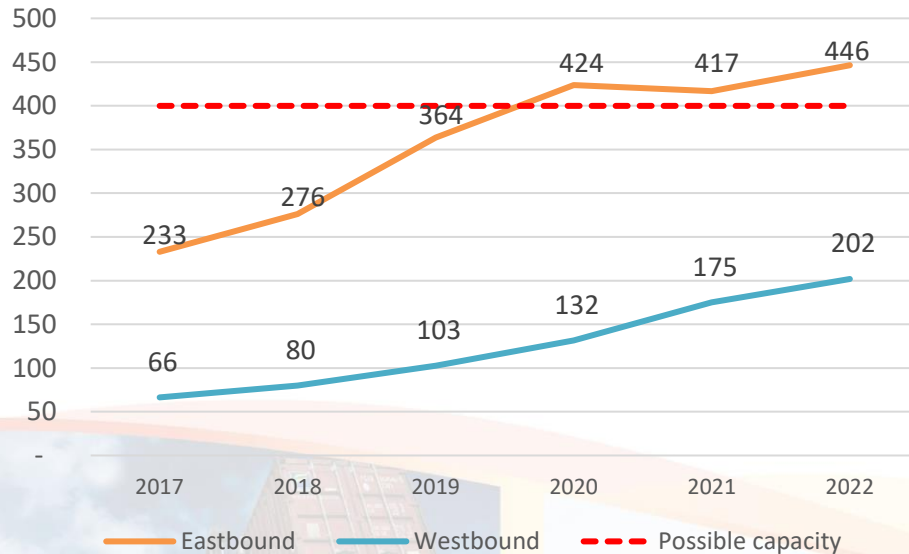
Source: Georgian Revenue Service

# CAPACITY UTILIZATION OF THE RED BRIDGE BCP

Red Bridge BCP works over its capacity. Traffic demand is significantly higher than the actual BCP capacity

**ANNUAL AVERAGE TRAFFIC- RED BRIDGE BCP**

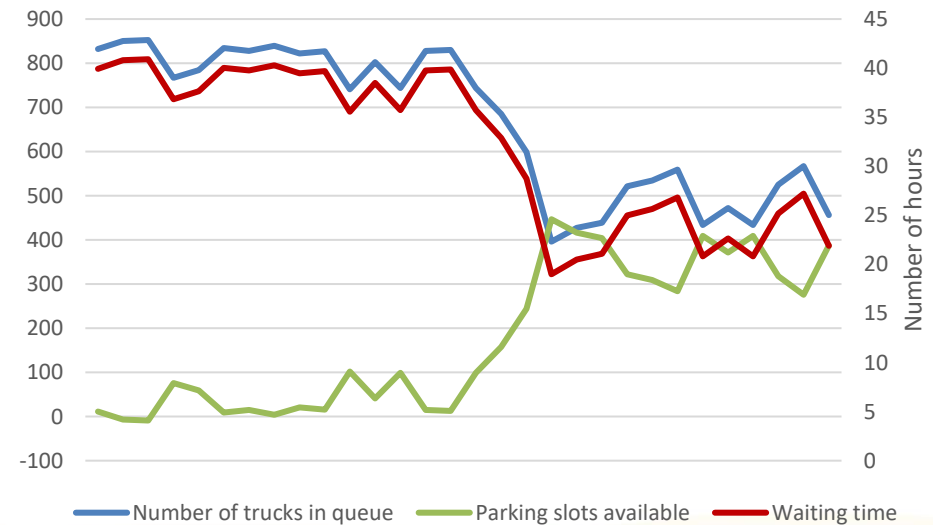
Number of vehicles



Source: Georgian Revenue Service

**TRUCKS QUEUING AT RED BRIDGE, MARCH 2023**

Number of vehicles / number of hours



# MAIN PROBLEMS ACCRUING AT RED BRIDGE BCP

- Increased waiting time of trucks- 36h on average
- Limited throughput capacity of BCP facility
- No possibility for extension
- Lengthy and redundant administrative procedures
- Physical checks of trucks and the absence of a single window system on the Azerbaijan side
- Insufficient risk management system





# JOINT BORDER-CROSSING CONCEPT

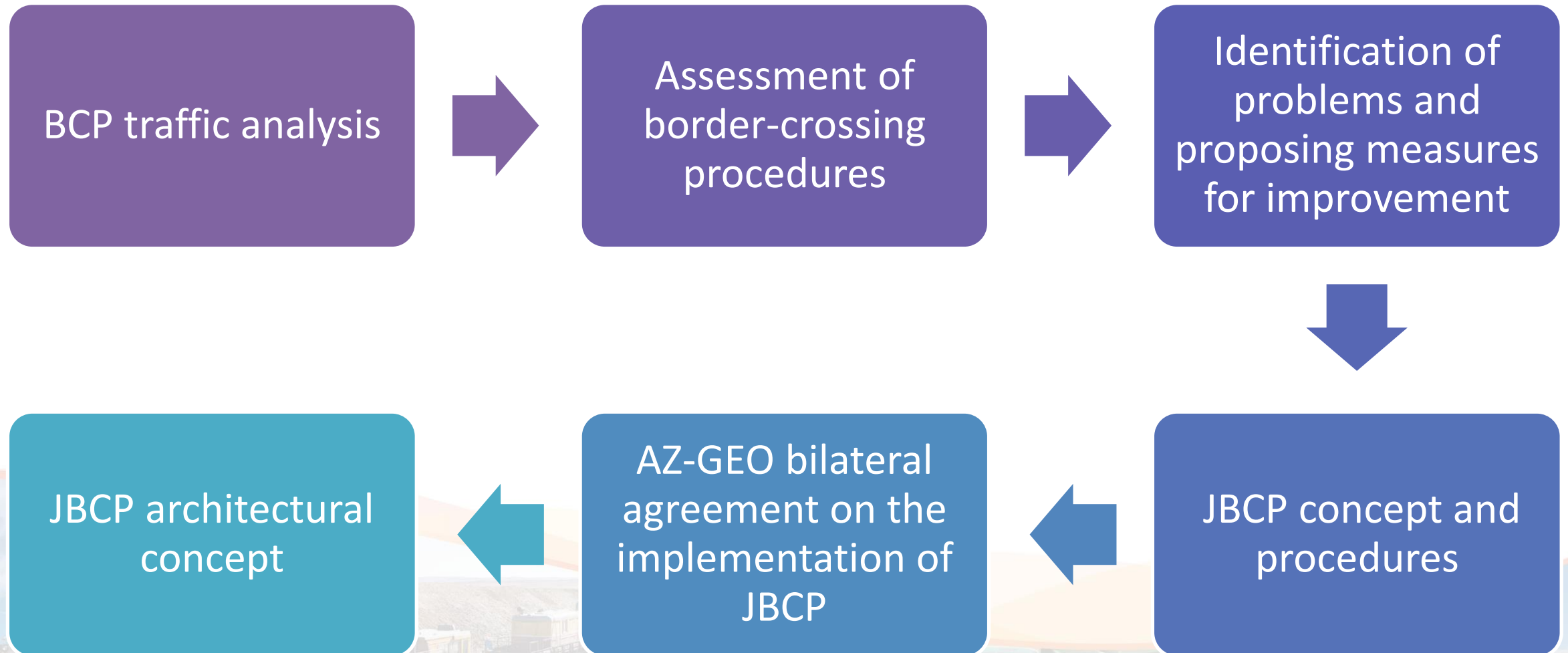
## Procedures

- The customs controls are conducted within a common area where customs offices of both administrations are established in a single facility
- The customs controls of the exporting and importing administrations are conducted simultaneously by officers from both customs administrations
- Comparable, harmonized and mutual recognition of customs formalities from Azerbaijan and the Georgian side

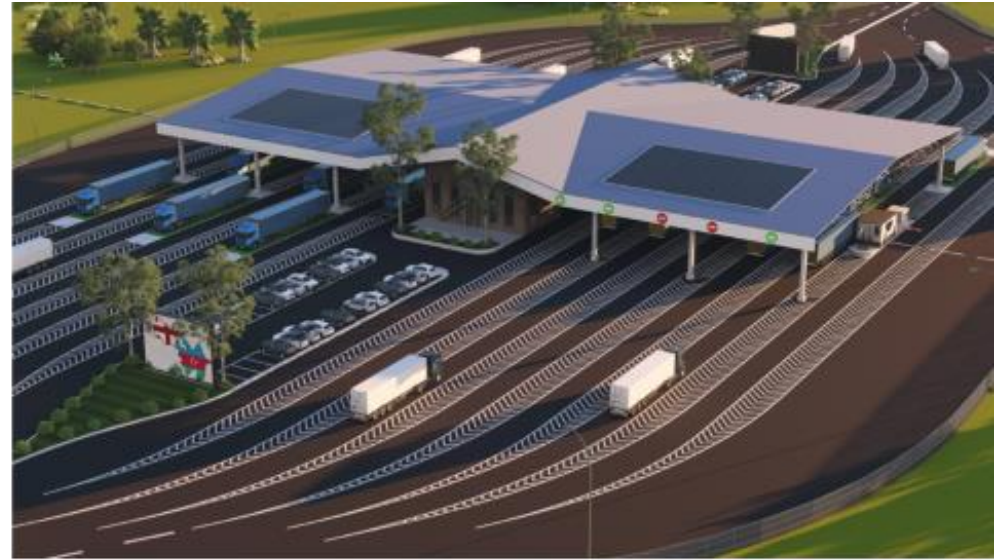
## Needs

- Reduction in customs formalities and harmonization of customs control procedures between Azerbaijan and Georgia
- Improving the risk management system
- Improved cooperation needed among customs authorities authorities

# AZERBAIJAN-GEORGIA JBCP PROJECT MILESTONES



# AZERBAIJAN-GEORGIA JBCP- 3D CONCEPT





# EXPECTED BENEFITS

- Significant increase in BCP throughput capacity through the improvement of procedures and adoption of the one-stop, single-window principle
- Reduction of the cross-border time to the minimum (2-5 min)
- Elimination of paper-based procedures
- Harmonization of customs control processes and improvement of risk management
- Implementation of real-time tracking of goods nationwide- short-term, corridor wide- medium term





**THANK YOU FOR YOUR ATTENTION!**

