

# Trans Euro-Asia Railway

## 渝新欧铁路运输





# Transshipment from Standard to Wide Gauge

## 准轨至宽轨换轨

### EFFECTIVE Transshipments

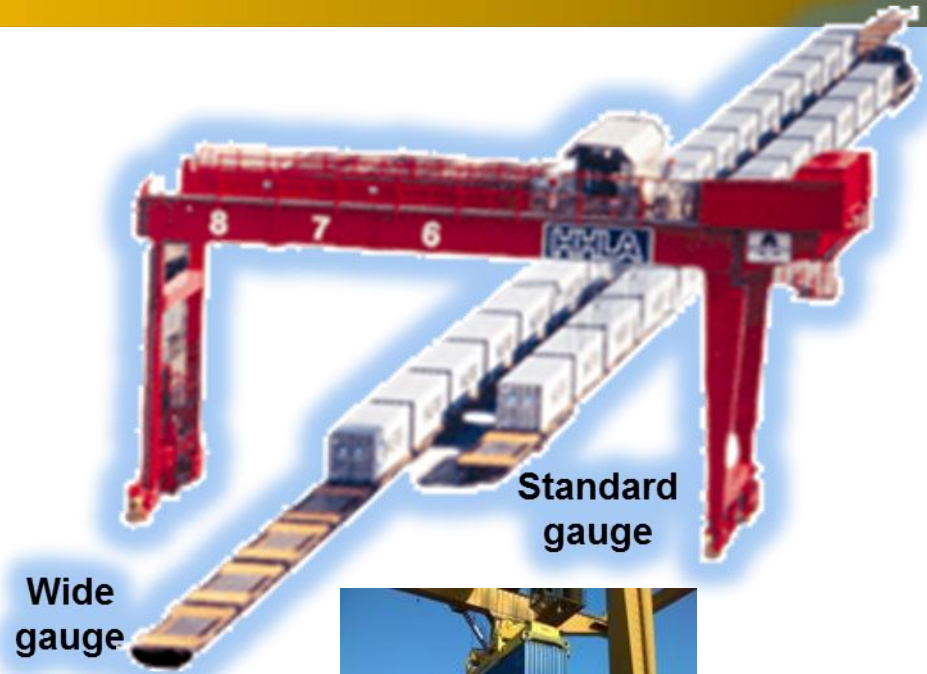
快捷的换轨速度

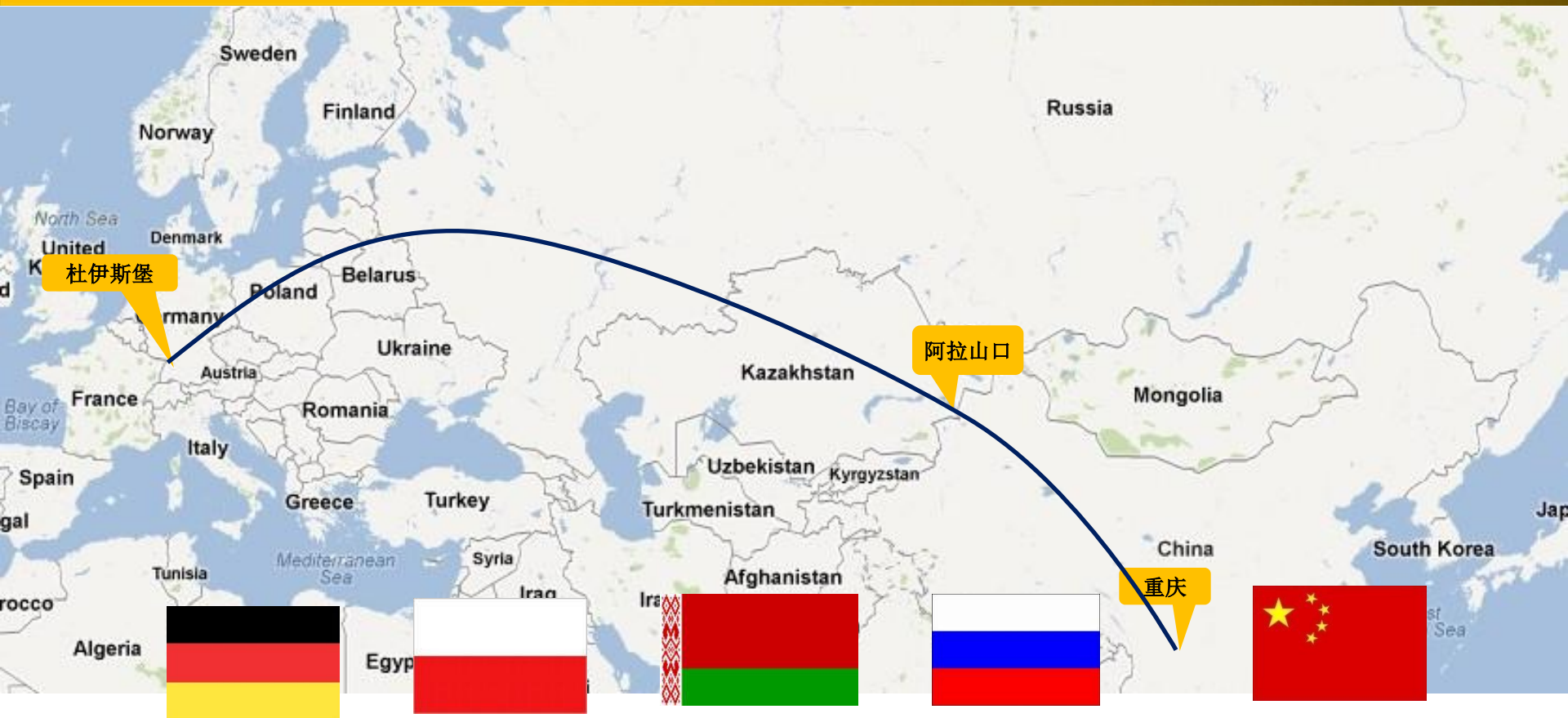
With common consignment note and electronic cargo manifest

(全程跨国铁路运输一票电子运单到底)

The first transshipment will be made at Poland from standard to wide gauge.  
(在波兰进行第一次换轨)

The second transshipment will also be made from wide gauge to standard gauge at Dostyk/Alashankou (在阿拉山口进行换轨)



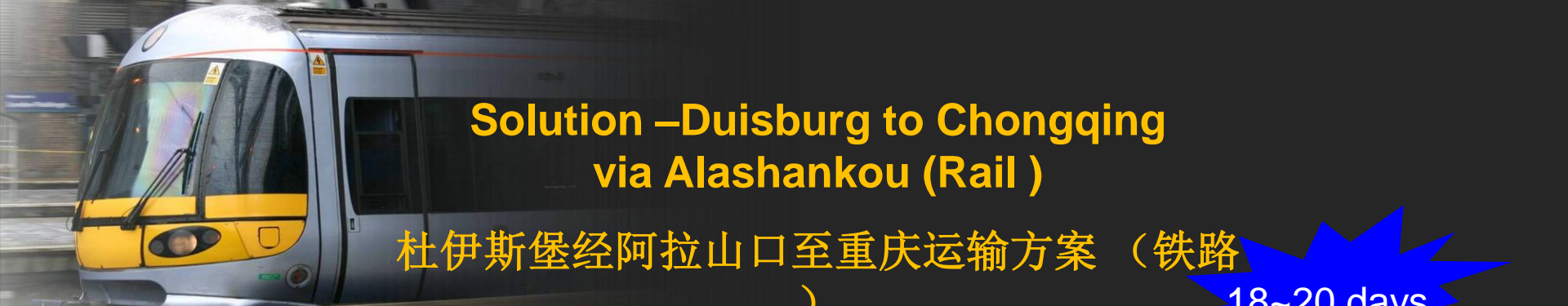


# Transit Time Overview in Each Country

— From EU to CQ via Alashankou

杜伊斯堡经阿拉山口至重庆的途经国家以及运输距离

Country 国家	City 城市	Transit Distance (Km) 运输公里	Transit Time 运输时间
China 中国	重庆	0	
	达州	205	
	西安	901	
	咸阳	989	
	哈密	3036	
	乌鲁木齐	3608	
	阿拉山口	3854	5 Days transport + customs transit +transshipment (6 days) 运输1天+转关+换轨共6天
Russia 俄罗斯	Chita	3953	Chita—Ulan-Ude—Irkutsk—Krasnoyarsk— Yekaterinburg—Berm—Kirov—Moscow 赤塔-乌兰乌德-伊尔库茨克-科诺雅斯科-叶卡捷琳堡-彼尔姆- 基洛夫-莫斯科
	Moscow	10380	8 Days 8天
Belarus 白尔罗斯	Krasnoye	10829	
	Minsk	11097	2 Days
Poland 波兰	Malazsewiche	11452	Malazsewiche—Warsaw—Poznan 马拉舍维奇-华沙-波兹南
	Łódź,	12173	1day+customs transit +transshipment 1天（转关+换轨）



# Solution –Duisburg to Chongqing via Alashankou (Rail )

## 杜伊斯堡经阿拉山口至重庆运输方案（铁路

18~20 days

3 days+1 day transshipment

10~12days

5 days

/Duisburg

poland

Alashankou

chongqing

### Rail :

Duisburg – Mala/Poland by Rail 科隆至波兰马拉舍维奇铁路运输： 3 days 3天

Transshipment at Mala Poland: 波兰马拉舍维奇转关、换轨 1 day 1天

Mala/Poland - Alashankou in block trains : 波兰至阿拉山口班列 10 to 12 days 5天

Alashankou – Chongqing Rail :山口至重庆 5 days 5天

**Total:** 总时间: 18~20 days

**Schedule:** block trains can depart every day from Duisburg. 科隆或杜伊斯堡可每天发班列



## Operation Plan – High Level 高水平的操作规划

### Customs (报关)

- One packing list and one Invoice for each container  
(每一个集装箱均需提供一套箱单和发票)
- China domestic customs clearance handled by Carrier (中国国内报关可以由承运人推荐和协助办理)
- Overseas customs clearance handled by Agent  
(境外清关手续一般均由收货人指定代理进行操作，亦可推荐目的地代理和报关行但不承担清关费用。)

# Tracklocks on Each Container (GPS and Alarm System) 在每个集装箱上安装电子锁

## Data transforming protocol

- GSM (850 / 900 / 1800 / 1900)

## Positioning

- GPS

## Installation

- Plug and play 电子锁有报警和定位的功能

## • Security

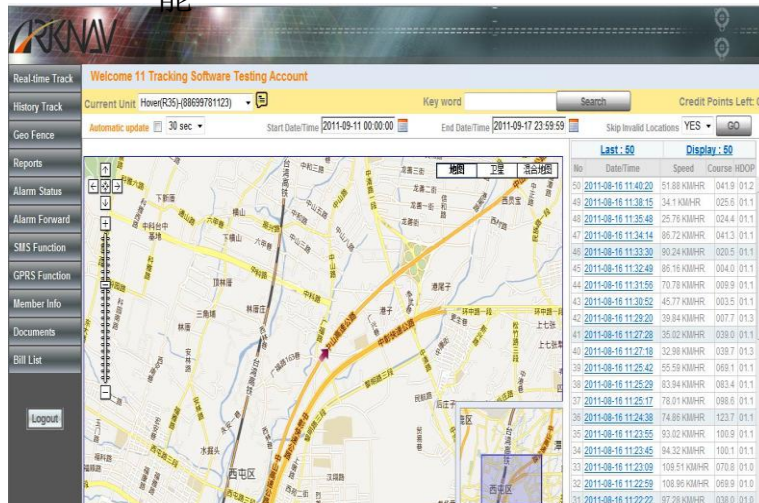
- Door Sensor / Tamper resistance

## • Track and Trace

- SMS / Email / Website

## • Alert

- SMS / Email / Website





# Tracing Map from a Tracklock

## 电子锁可提供货物实时追踪信息





# Communication Plan—Track & Trace from ACT

## 货物追踪信息提供

追踪日期 Tracing Date	车次号 Train number	站名 Station Name	站编 Station Code	国家 Country	数量 Quantity of CMTK	到达日期/时间 Date and Time of Arrival	离开日期/时间 Date and Time of departing	重量 (KG) Transported	剩余里程(KM) The left mileages that will transport	备注 Remarks
Oct. 27, 2011	81422	重庆南站 TJC Terminal Chongqing		Chengdu Rail	1210KG		10/27/2011 22:00	0	3854 (FM TJC to Alashankou)	
Oct. 28, 2011	81422	达州 Dazhou Station		Chengdu Rail	1210KG	10/28/2011 12:00		205	3649	
Oct. 28, 2011	81422	东坝站 East Labay Station		Chengdu Rail	1210KG	10/28/2011 18:30		270	3584	
Oct. 29, 2011	81422	xiaohenzhen 小回镇		Xian Rail	1210KG	10/29/2011 04:18		694	3160	
Oct. 29, 2011	81422	大寨坪 Daizhai		Xian Rail	1210KG	10/29/2011 09:18		698	3156	
Oct. 29, 2011	81422	西安南站 Xi'an South Station		Xian Rail	1210KG	10/29/2011 12:00		901	2953	
Oct. 29, 2011	81422	甘泉堡站 Ganshanba		Xian Rail	1210KG	10/29/2011 14:20		941	2994	
Oct. 29, 2011	81422	咸阳西站 Xi'an West Station		Xian Rail	1210KG	10/29/2011 18:00		989	2865	
Oct. 29, 2011	81422	咸阳站 Xi'an Station		Xian Rail	1210KG	10/29/2011 20:08		1010	2844	
Oct. 30, 2011	81422	甘泉堡站 Ganshanba		Lanzhou Rail	1210KG	10/30/2011 08:46		1502	2352	
Oct. 30, 2011	81422	兰州东站 Lanzhou East Station		Lanzhou Rail	1210KG	10/30/2011 12:01		1557	2297	
Oct. 30, 2011	81422	河口南站 Hekou South Station		Lanzhou Rail	1210KG	10/30/2011 14:00		1606	2248	
Oct. 30, 2011	81422	出口村 Chūkǒu Cūn		Lanzhou Rail	1210KG	10/30/2011 16:01		1784	2070	
Oct. 30, 2011	81422	会昌 Huichang		Lanzhou Rail	1210KG	10/30/2011 18:45		1993	1861	
Oct. 31, 2011	81422	会昌站 Huichang Station		Lanzhou Rail	1210KG	10/31/2011 2:30		2438	1416	
Oct. 31, 2011	81422	河口站 Hekou Station		Wulumuqi Rail	1210KG	10/31/2011 12:01		2696	1158	
Oct. 31, 2011	81422	柳泉站 Liúquán		Wulumuqi Rail	1210KG	10/31/2011 14:01				
Oct. 31, 2011	81422	红柳河站 Hongliúhé Station		Wulumuqi Rail	1210KG	10/31/2011 17:30		2836	1018	
Oct. 31, 2011	81422	明善站 Míngshàn		Wulumuqi Rail	1210KG	10/31/2011 22:58		3036	818	
Nov. 1, 2011	81422	都善站 Dūshàn		Wulumuqi Rail	1210KG	11/01/2011 06:06		3186	668	
Nov. 1, 2011	81422	天山站 Tiānshān		Wulumuqi Rail	1210KG	11/01/2011 12:01				



# Neighbouring Provinces Situation

## 其他省市情况简介

### 1. Chengdu 成都

Destination: Lodz, Poland 目的地波兰罗兹

Formal block began: July 14, 2013 首发: 2013年7月14日 (试运行2013年4月26日)

Time: 14 days 运行时间: 14天

### 2. Wuhan 武汉

Destination: Meilink Pal Dube Ce, Czech 目的地捷克梅林克帕尔杜比采

Formal block began: October 24, 2012 首发: 2012年10月24日

Time: 17 days 运行时间: 17天

### 3. Zhengzhou 郑州

Destination: Hamburg, German 目的地德国汉堡

Formal block began: July 17, 2013 首发: 2013年7月17日

Time: 18 days 运行时间: 18天



# Transit in Shanghai

## ⑩ 1. EDI

⑩ Agent sent EDI to carrier on manifest, loading list, etc

## ⑩ 2. LOADING PLAN

⑩ Carrier sent loading plan to terminal/station according to EDI

## ⑩ 3. Customs declaration

⑩ a. transit customs declaration (EDI+documents)

⑩ b. Territoriality declaration port clearance 属地申报口岸验放

⑩ Standard: enterprise with A credit



THANKS