

# CAREC Federation of Carrier and Forwarder Associations (CFCFA)

## 8<sup>th</sup> Annual Meeting

### CFCFA Standardization Initiative



**Capt. Lin Zhong**  
**Chairman of CFCFA**

**18 September 2017 | Dushanbe, Tajikistan**



# Part 1. CFCFA Standards Planning, Phase II-1

Jan. 2015: Kick-off meeting of the Almaty transit trade facilitation TA project

July, 2016: Interim Report on Almaty Transit Trade Facilitation TA Projects

Nov. 2016: Final Meeting on the Uzbekistan Transit Trade Facilitation TA projects

**Establish RTGM (Regional Transit Guaranteeing Mechanism) and substitute transit guarantee with insurance**

**Develop CAREC Advanced Transit System, CATS**



# Part 1. CFCFA Standards Planning, Phase II-2

## The 1<sup>st</sup> CCC/CFCFA joint meeting was held in Ulaanbaatar in August, 2015.

1. Participate in the RTGM and substitute transit guarantee with insurance projects, in order to streamline process and reduce the operational risk for the private sectors.

2. Participate in the AEO system construction, improve the international supply chain and border safety, reduce custom inspections and cost of clearance, improve competitiveness within the region.

3. support private sectors participation into the technical research of the regional standardization; encourage the private sector to study the impact standards disparity and counter measures.

4. Support CFCFA to make some unstandardized, but frequently used transport documents and electronic message standards within the framework of WCO.

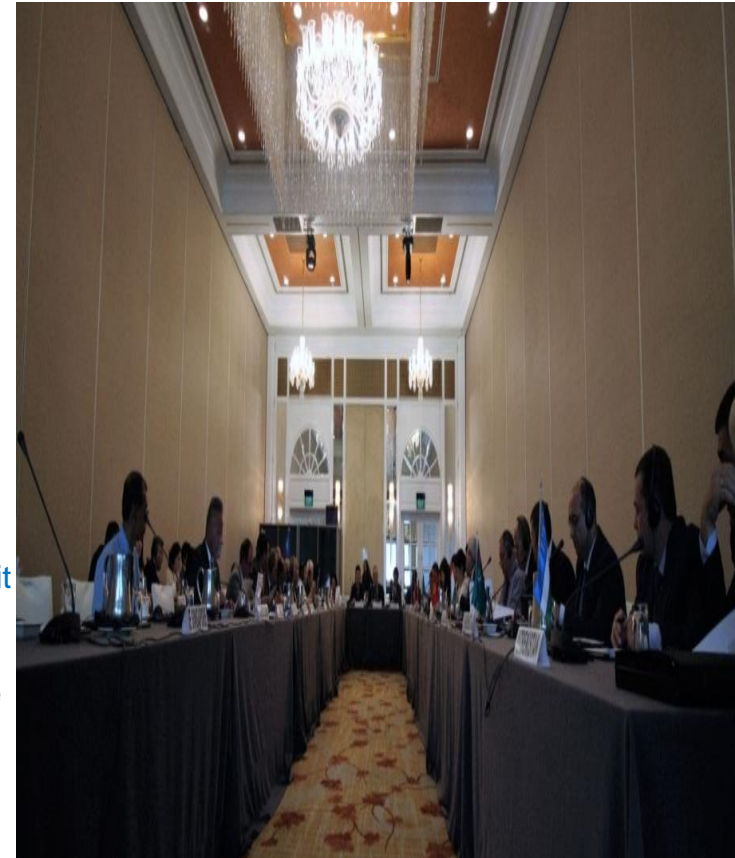


# Part 1. CFCFA Standards Planning, Phase II-3

Standards proposals made by the 2<sup>nd</sup> CCC/CFCFA joint meeting held in Singapore, Sept. 2016:

■ **IT related:** <http://www.docin.com/p-88678448.html>

- ✓ CAREC Road cross-border (transit) transport, consignment note
- ✓ CAREC Road cross-border (transit) transport, packing list
- ✓ CAREC Road cross-border (transit) transport, freight weight list
- ✓ CAREC specifications on describing cross border logistics, the entry and exit transportation tools
- ✓ CAREC specifications on describing cross-border logistics, basic info of the drivers and accompanying people inside the entry and exit transport tools
- ✓ CAREC specifications on cross-border, entry and exit goods, basic info
- ✓ CAREC specifications on road cross-border/transit transport IT system interface
- ✓ eb-XML-based international cross-border/transit transport exiting declaration message.



# Part 1. CFCFA Standards Planning, Phase II-3

- ✓ eb-XML-based international cross-border (transit) transport transit declaration message
- ✓ eb-XML-based international cross-border (transit) transport declaration message
- ✓ eb-XML-based international cross-border (transit) transport transit completion confirmation message
- ✓ ebXML-based transport and other billing statement message
- ✓ ebXML-based international road transport waybill message

## ■ Equipment

- ✓ Scope of application for CAREC transport tool (equipment) Smart e-locks
- ✓ Scope of application for CAREC cross-border transport whole-process
- ✓ monitoring equipment

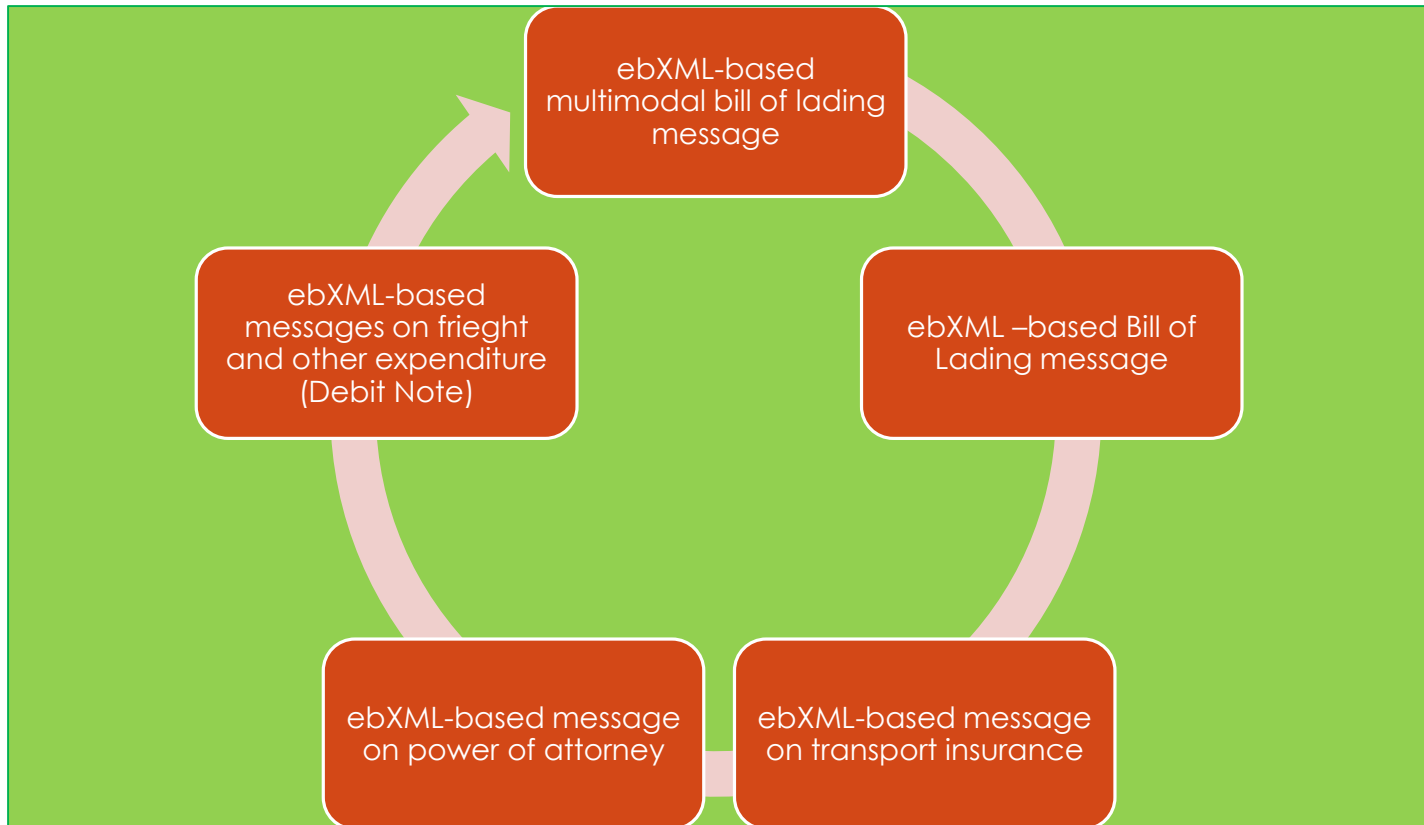
## ■ Others

- CAREC Practical Code for protecting cross-border transport vehicles and goods
- CAREC Code for performance testing and energy efficiency measurement of the cross-border fridge transport



## PART II. 5 CFCFA STANDARDS-PHASE II--REVIEW

Phase II review on 5 standards was held on Sept. 14, 2017 in Beijing.



## PART II. 5 CFCFA STANDARDS-PHASE II--REVIEW

Phase II review on 5 standards was held on Sept. 14, 2017 in Beijing.



# PART II. 5 CFCFA STANDARDS-PHASE II—MAJOR CONTENT

Specifies the structure and compiling method of the ebXML-based BoL message

Applicable to ebXML-based e-data exchange in the international trade; could be taken as a reference for e-documents management.

## Major content

Biz scenario description, message compiling rules and data format

Info of the core participants

High-level class diagram of the core participants

Documents information

Documents file class diagram

Documents high-level class diagram

Documents details class diagram

Data dictionary

## Reference Appendices

Appendix A. Documents application diagram and sequence diagram

Appendix B. Document templates

Appendix C. XMLSchema example of the document

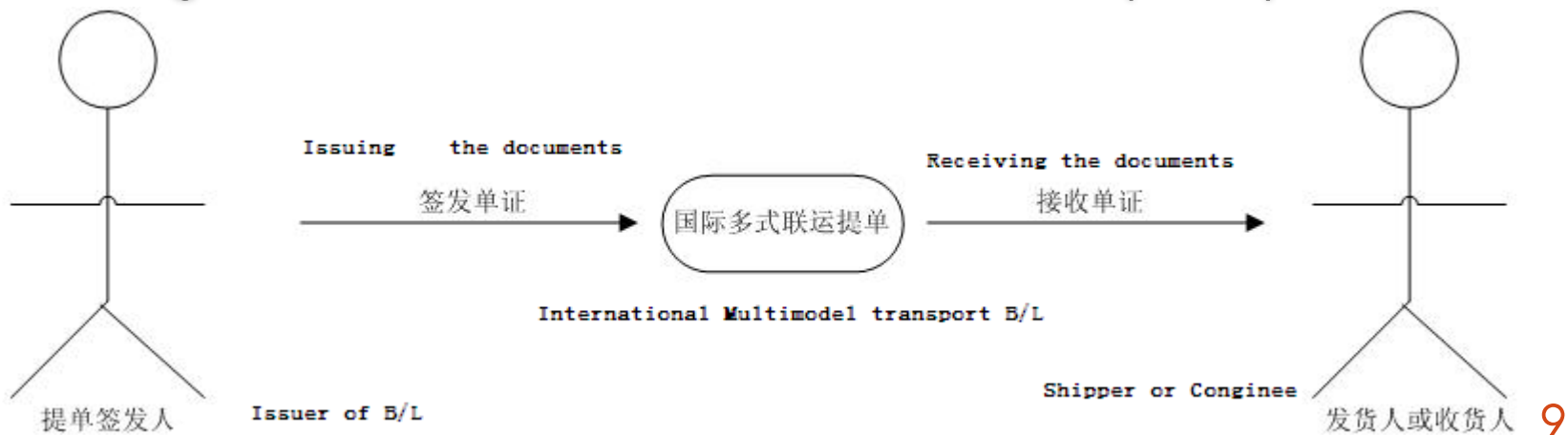
Appendix D. XML example of the document



# PART II. 5 CFCFA STANDARDS-PHASE II—BILL OF LADING

## CFCFA Recommendation 011

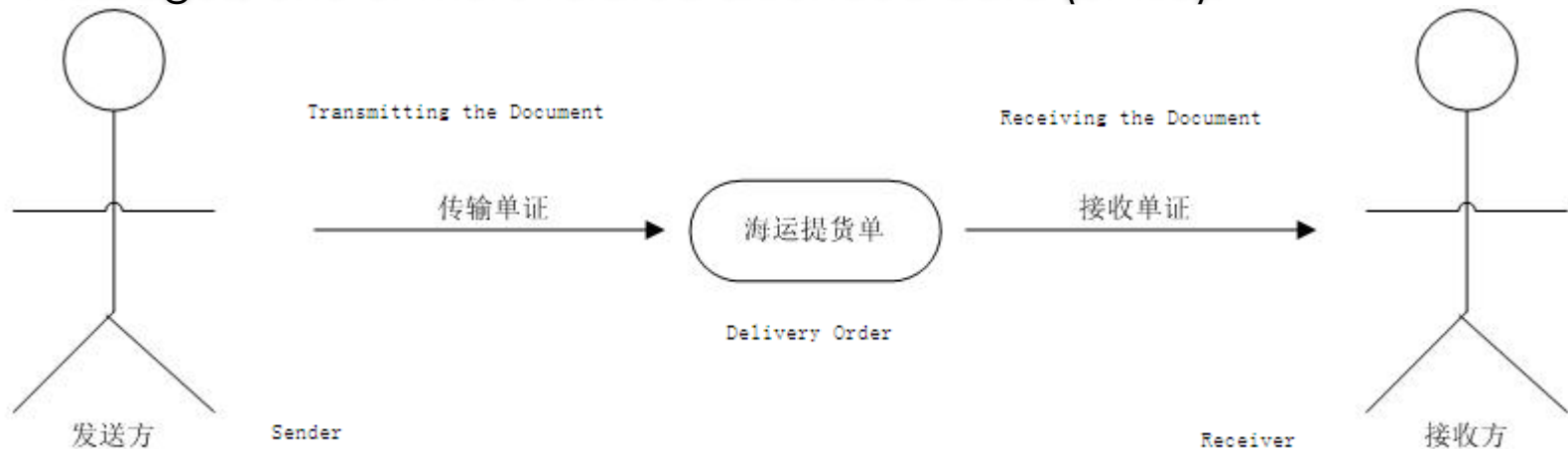
The International multi-modal transport document/C.T.D (Combined Transport Document) is a document that the C.T.D operators receive and deliver consignment in accordance to the C.T.D. contract terms. It is the property certificate of the consignment, and the certificate of the consignee when taking the delivery. The related parties (the B/L issuer and its agent, the shipper and its agent, the consignee and its agent, the notifier etc.) exchange necessary information through C.T.D. B/L message, one or more related extended data (or file).



# PART II. 5 CFCFA STANDARDS-PHASE II—BILL OF LADING

## CFCFA Recommendation 012

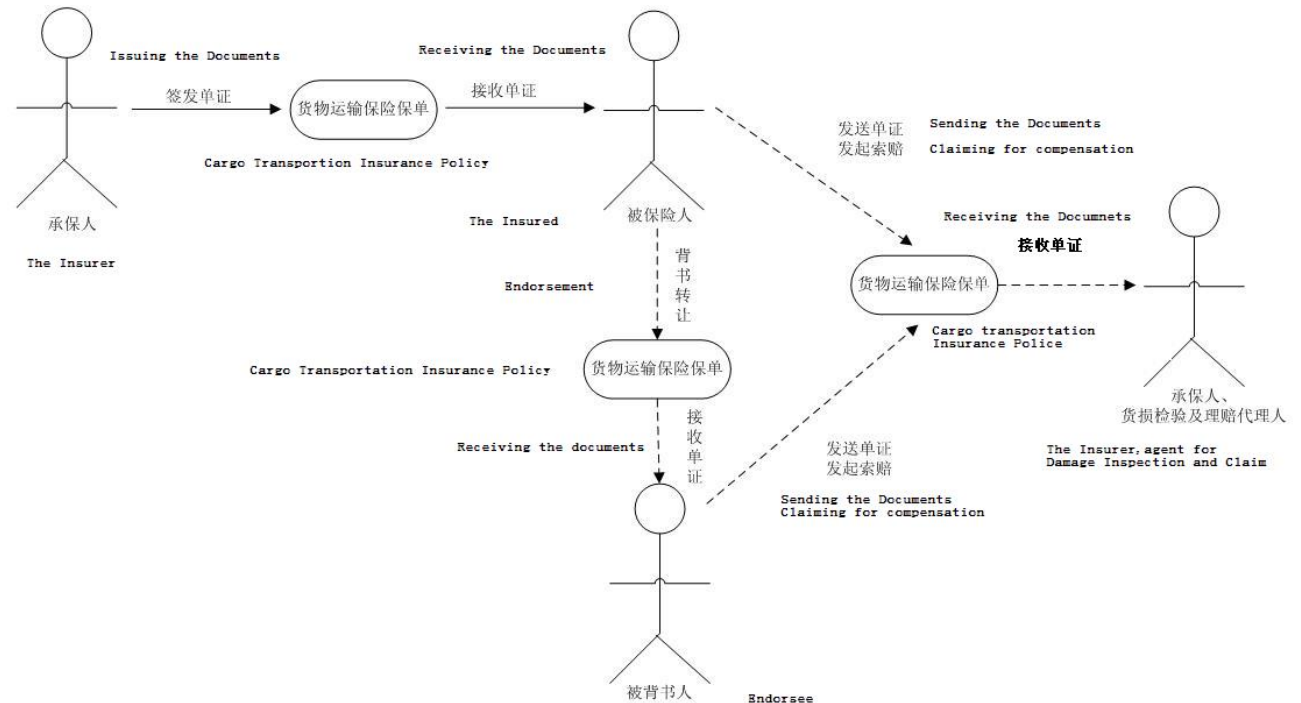
B/L issued by the carrier or its agent is a certificate for the consignee or its agent to take the delivery on site of a dock, warehouse or ship. The consignee or its agent exchanges with B/L original for B/L from the carrier or its agent, based on which the custom declaration and inspection will be conducted, and consignment will be collected from the receiver (dock or warehouse etc.). The sender of the B/L info (the carrier and its agent), and the receiver (the consignee and its agent, inspection and quarantine organization, custom, consignment keeper etc.) exchange necessary information through sending B/L messages, one or more related extended data (or file).



# PART II. 5 CFCFA STANDARDS-PHASE II—INSURANCE POLICY

## CFCFA Recommendation 013

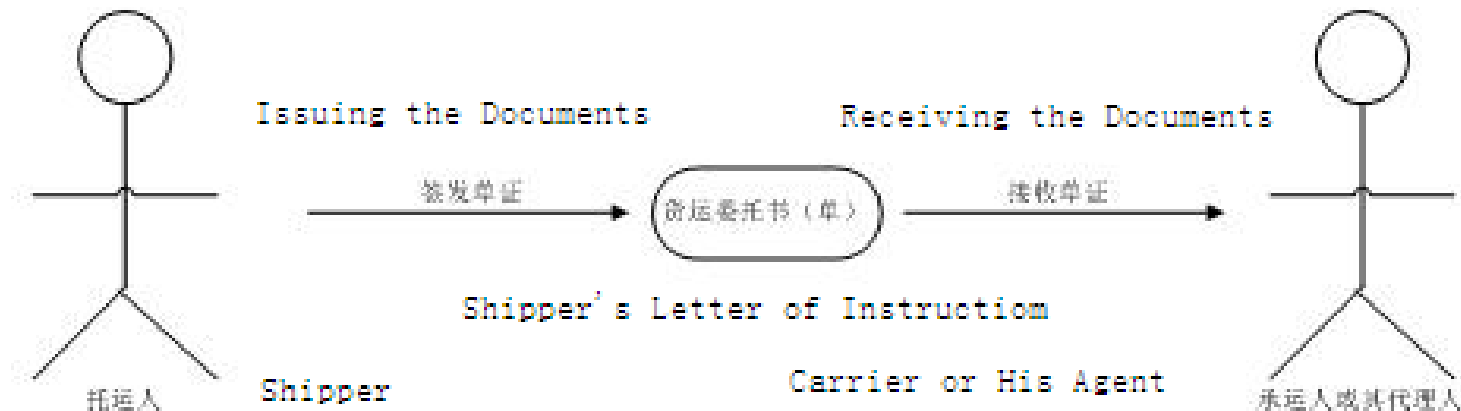
The cargo insurance policy is a written certificate issued by the issuer to the insured after signing of the insurance contract. The rights of claim and compensation of the insured could be transferred through endorsed assignment. The endorsee could claim for compensation with this policy from the insurer or the agent for damage inspection and claim once any risk loss incurs. The related parties (the insurer, agent for damage inspection and claim, the insured, the endorsee etc.) exchange necessary information through sending freight transport insurance policy messages, one or more related extended data (or file).



# PART II. 5 CFCFA STANDARDS-PHASE II—POWER OF ATTORNEY

## CFCFA Recommendation 014

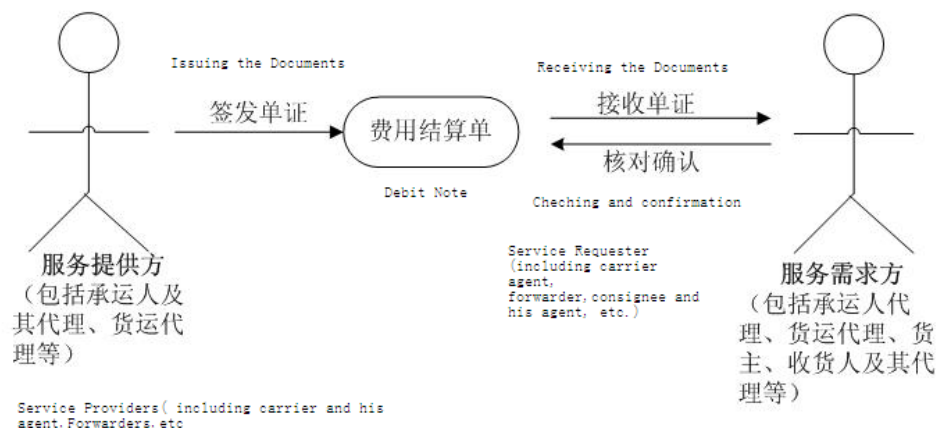
Letter (Bill) of Instruction is a form filled out and issued by the shipper to the carrier in relation the freight transport. The carrier and its agent will send confirmation document after receiving and is happy with the letter of instruction, ever since when the L/I is legally binding. The shipper and carrier and their agents could exchange necessary information through sending L/I messages, one or more related extended data (or file).



# PART II. 5 CFCFA STANDARDS-PHASE II—DEBIT NOTE

## CFCFA Recommendation 015

The Debit Note is a document issued by the recipient to the payer. After the goods is loaded, or the carrier issued the transport document after receiving the goods, the carrier or its agent will issue such a note to its customer (the shipper, consignee or its agent, other carrier or its agent, other other service users); or it could also be issued by service provider to the serviced party once the service is delivered. The recipient of the note will check and confirm, and start the payment and invoicing process if there is no objections. The related parties (the carrier and it agent, shipper, the consignee and its agent, service providers, service requester etc.) could exchange necessary information through sending debit note, one or more related extended data (or file).



# 2017 Forum on Regional Knowledge Sharing

Thank you!



Capt. Lin Zhong

Chairman of CAREC Federation of Carrier and Forwarder Association

Tel: +86 10 58603780 +86 13801282182

E-mail: [captlin@126.com](mailto:captlin@126.com)