



**REVENUE
SERVICE**

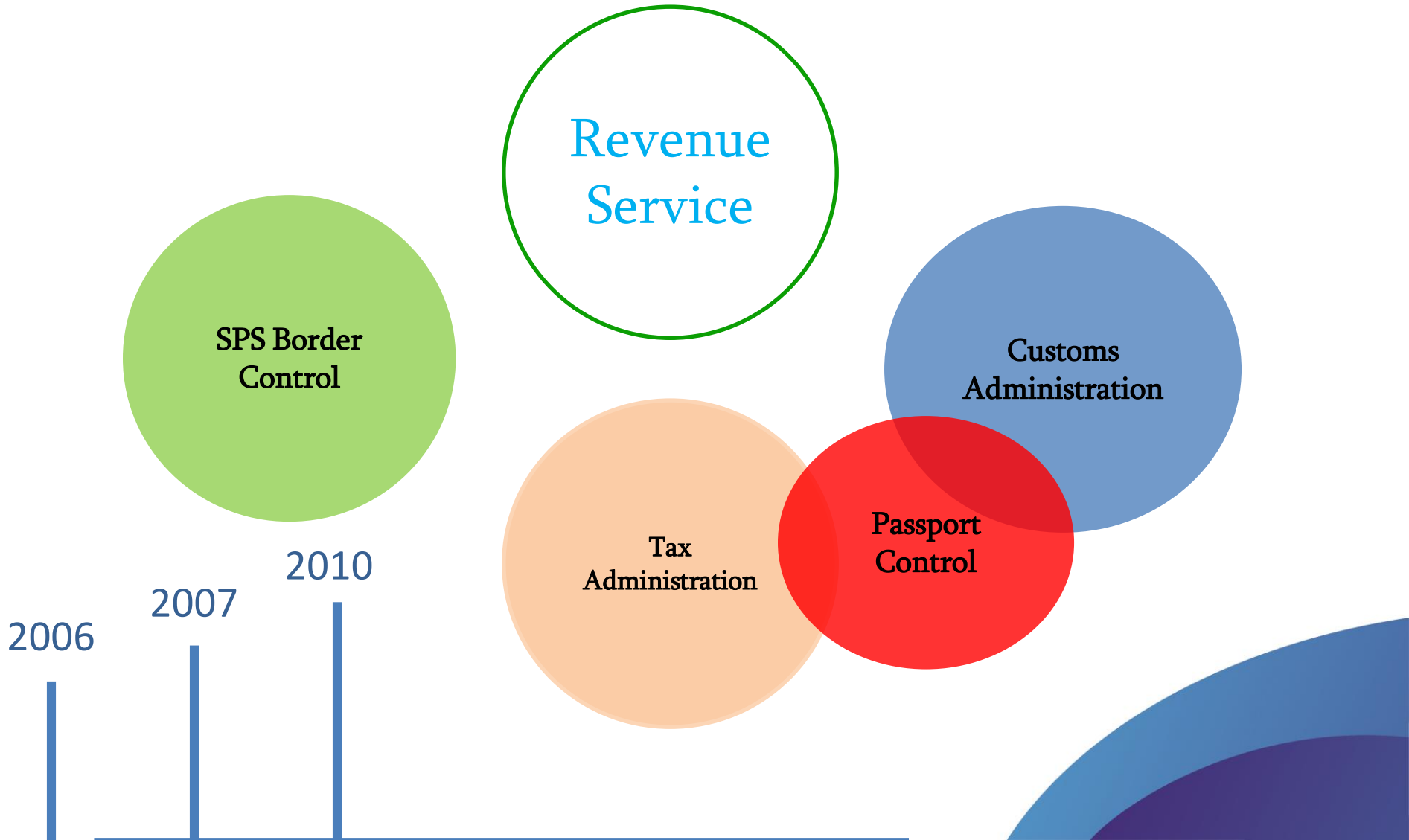
Revenue Service of Georgia

TRS - Time Release Study

2017



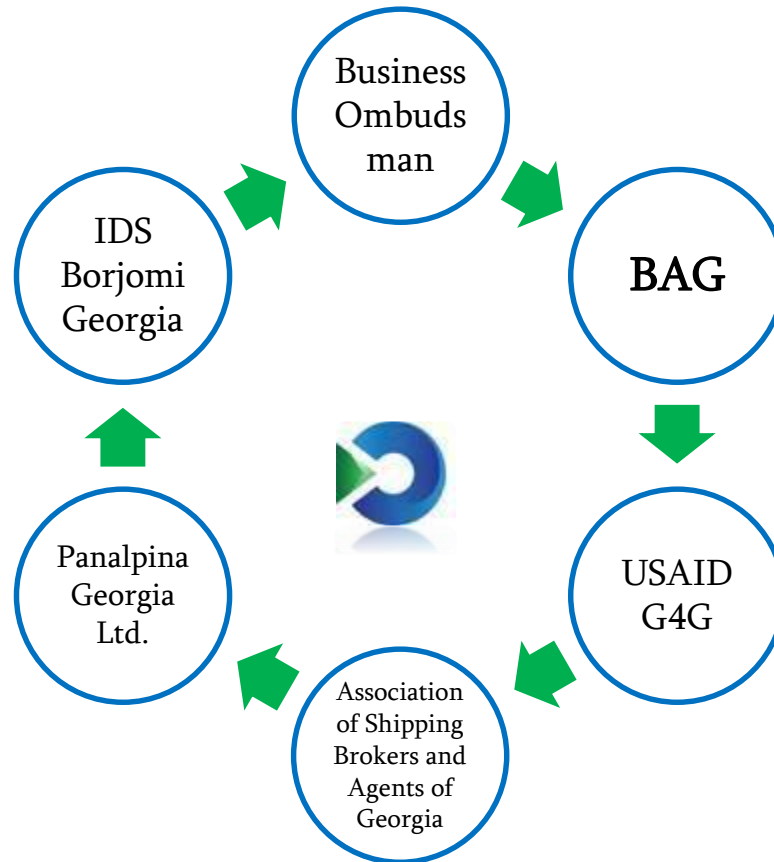
Revenue Service of Georgia





- ▶ *Study preparation and planning*
- ▶ *Data collection and analysis*
- ▶ *Conclusions / findings*







Study preparation and planning

Scope of study



Time period

- 16-21 February, 2016
- 6 days – 24 hours



Procedures

- Import
- Transit
- Goods subject to veterinary/sanitary control



Questionnaire

- CBCP “Sarpi”
- CBCP “Poti Sea Port”
- TCO “Tbilisi”
- TCO “Batumi”
- TCO “Poti”



Study preparation and planning

Scope of Study





Study preparation and planning

Scope of Study



CBCP

- Each 10-th shipment
- 3 shifts- CBCP «Sargi» и CBCP «Poti Sea Port»
- Information based on filled out questionnaires for CBCP



TCO

- All import operations
- 2 смены - TCO «Tbilisi», TCO «Batumi» and TCO «Poti»
- Information from the database (E-Customs, Oracle, QMATIC)



Time from the arrival of a vehicle to the customs control zone to the exit from the customs control zone

procedure	min	maximum	average
transit	2 min	24 min.	7 min
import	2 min	26 min.	7 min

procedure	min	maximum	average
K9	11 min	37 min	19 min
Weighing	1 min	3 min	2 min
X-ray	2 min	6 min	3 min
physical inspection	5 min	6 hr and 20 min	3 hr and 16 min



Time for SPS control

procedure	min	maximum	average
import	13 min	3 days 9 hr and 11 min	5 hr and 18 min
transit	13 min	54 min	27 min

Advance declaration – the time from the arrival of a vehicle to the customs control zone to the exit from the customs control zone

min	maximum	average
1 min	10 min	4 min



Two ships

Ships	Unloading time	Pier	Number of unloaded containers
„ASMARS“	17 February 2016	XIV	196
„AYSE NAZ BAYRAKTAR“	18 February 2016	XIV	226

Time from unloading to removal from the port area : 418 cases with “simplified form” N- 222

min	maximum	average
5 min	1 hr 03 min	14 min

Time spent exclusively for customs procedures (418 cases with “simplified form” N- 222)

min	maximum	average
1 min	7 min	1 min



Additional control

procedure	min	maximum	average
X-ray	2 min	5 min	3 min
physical inspection	47 min	47 min	47 min

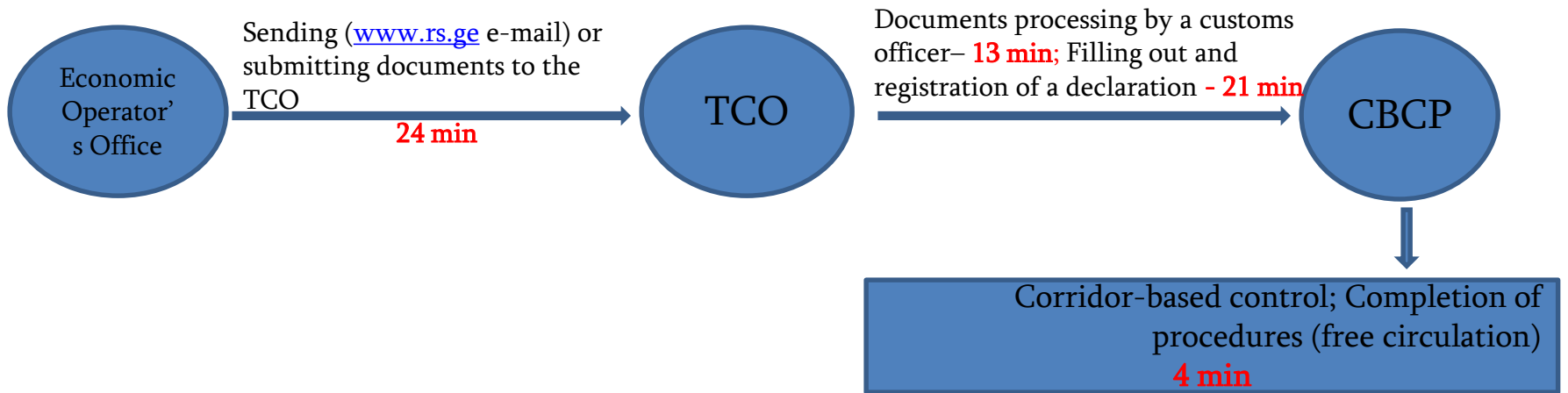
Time for SPS control

procedure	min	maximum	average
import	58 min	2 days 6 hr and 31 min	5 hr and 45 min
transit	1 min	25 min	4 min

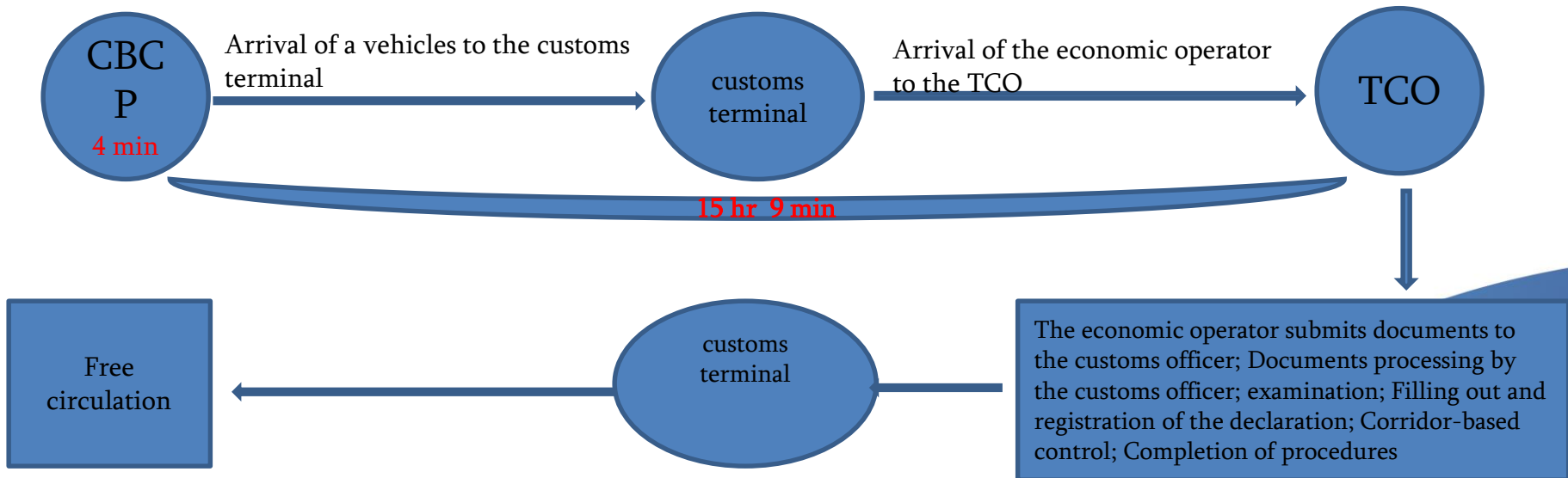


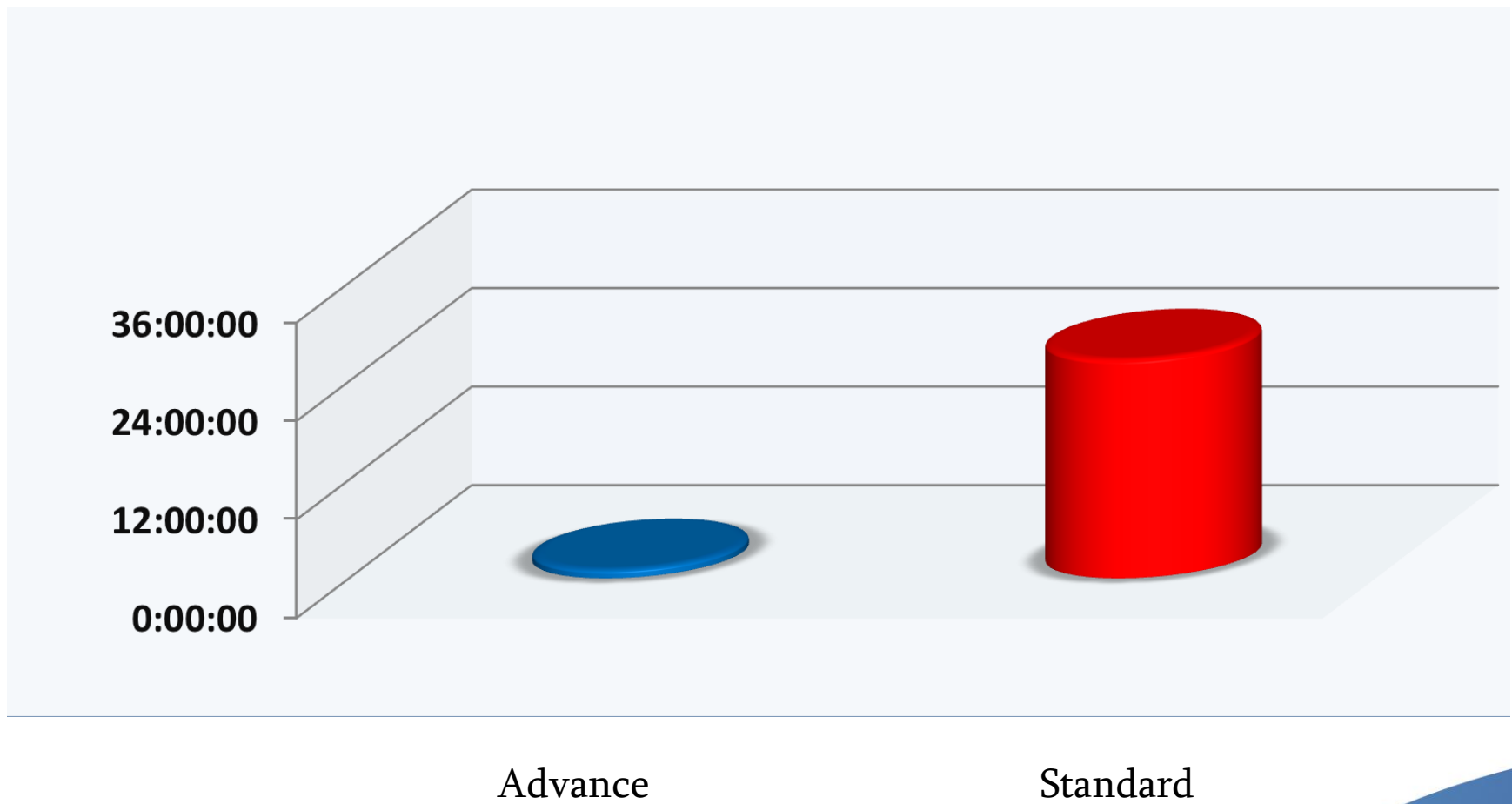
TCO Clearance options

Advance declaration



Standard declaration

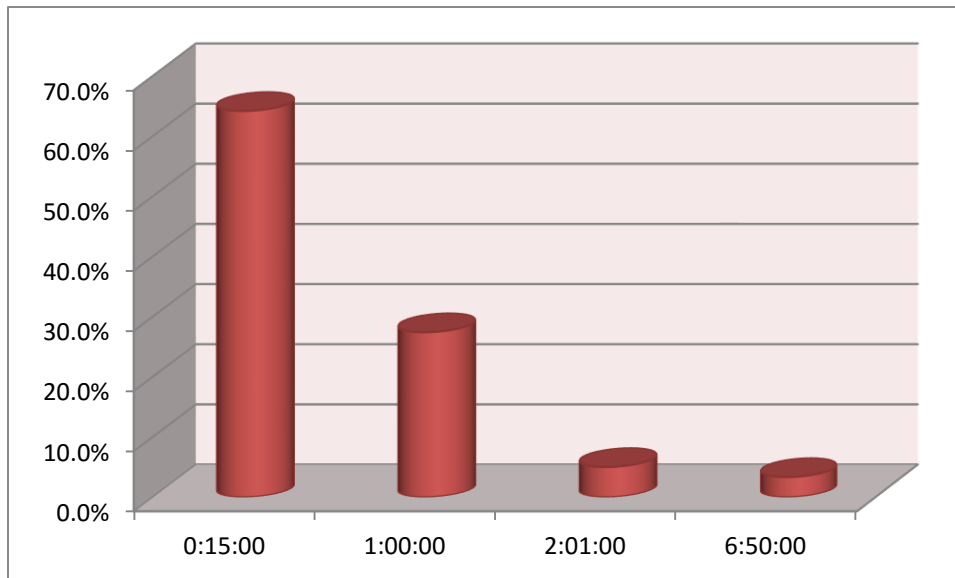






The time from submission of documents by the economic operator to documents processing

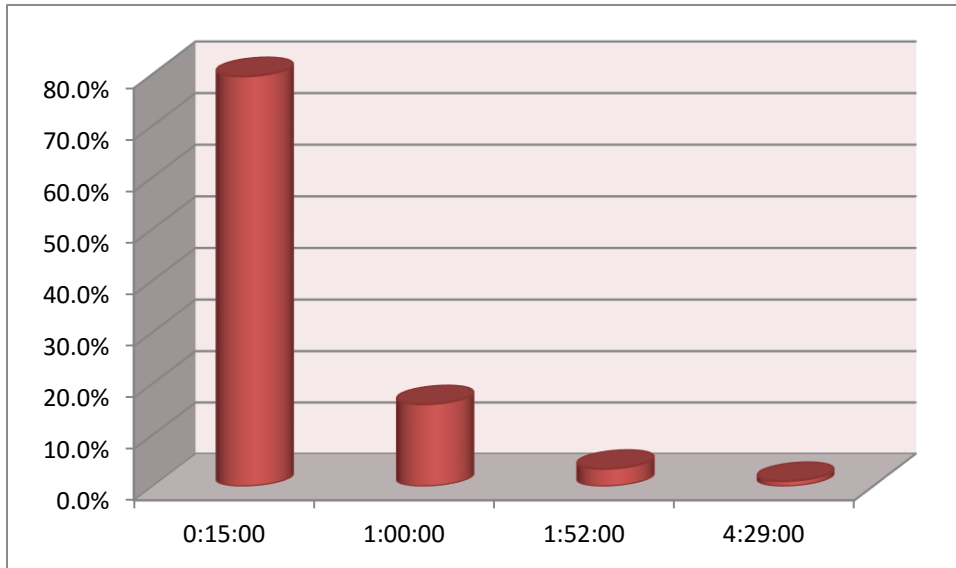
min	maximum	average
0 min	6 hr and 50 min	24 min





The time to process documents sent electronically

min	maximum	average
0 min	4 hr and 29 min	13 min



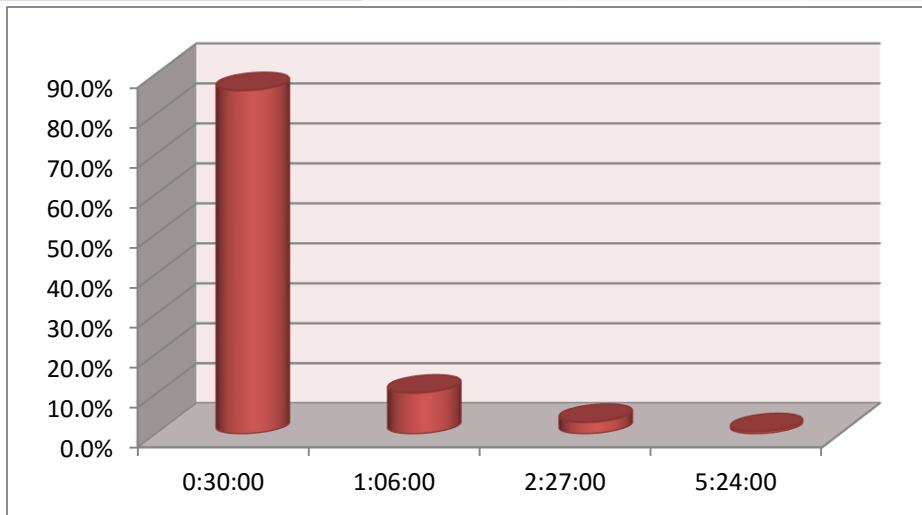


Time to fill out the advance declaration by the customs officer

min	maximum	average
5 min	5 hr and 24 min	21 min

The time to fill out the declaration depends on the number of commodity codes

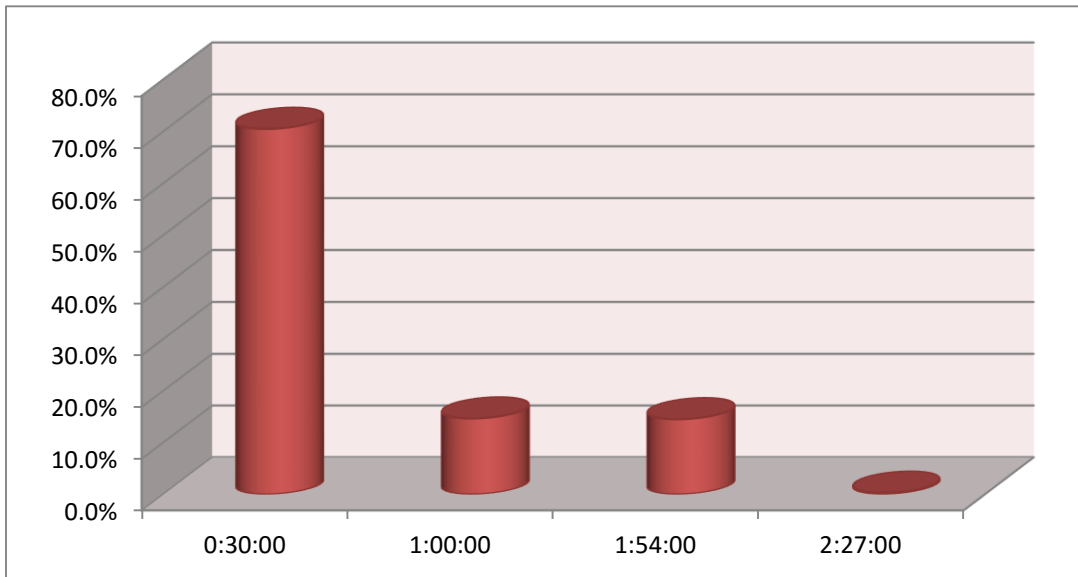
Number of commodity codes	1 – 5	5 – 10	10 – 20	20 and more
Declaration (%)	258 (86%)	23 (8%)	15 (5%)	4 (1%)





The time from arrival of the vehicle to the TCO to submission by the economic operator

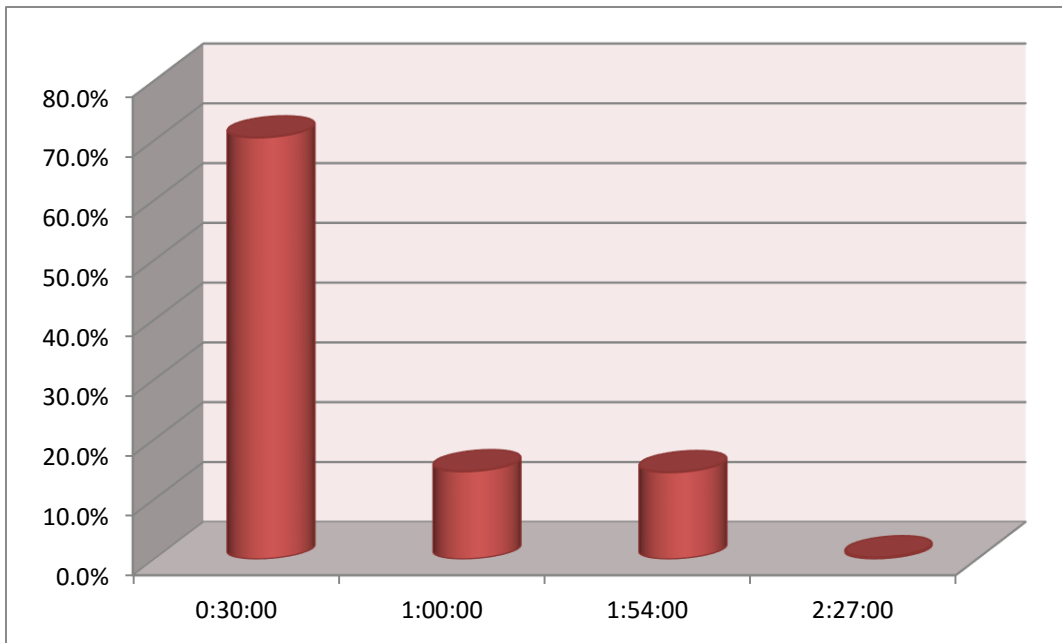
min	maximum	average
0 min	71 hr and 55 min	10 hr and 18 min





The time from the issuance of the queue number to the beginning of customs formalities

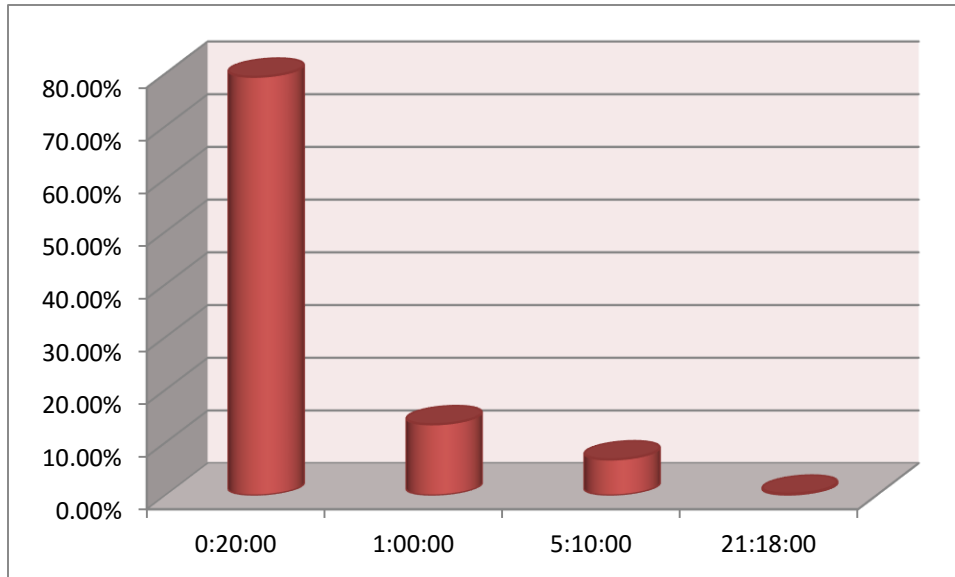
min	maximum	average
0 min	2 hr and 27 min	25 min





Documents processing by the customs officer

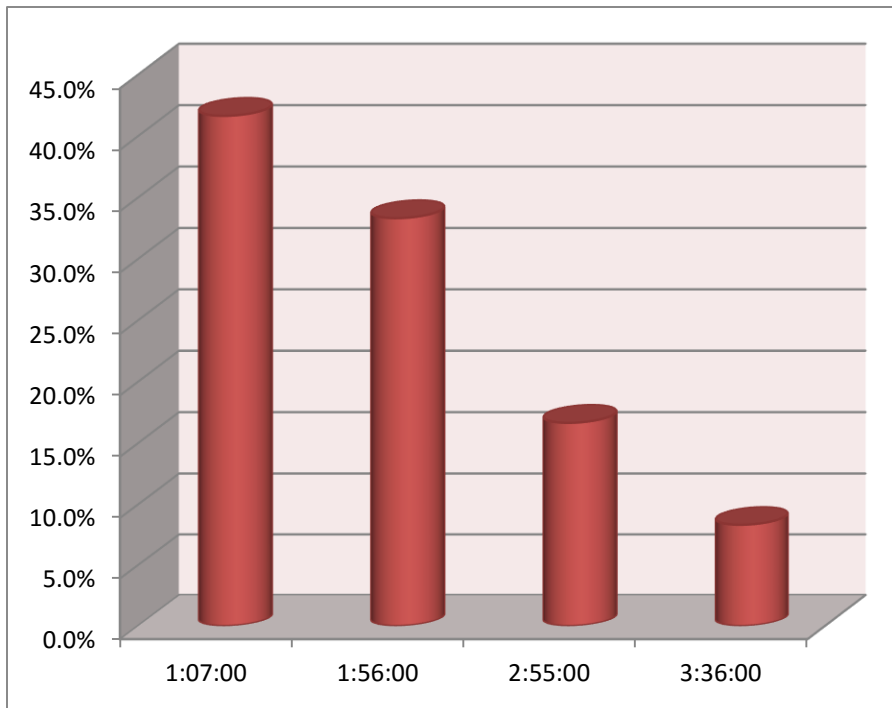
min	maximum	average
0 min	21 hr and 18 min	20 min





Time for examination

min	maximum	average
46 min	3 hr and 36 min	1 hr and 38 min

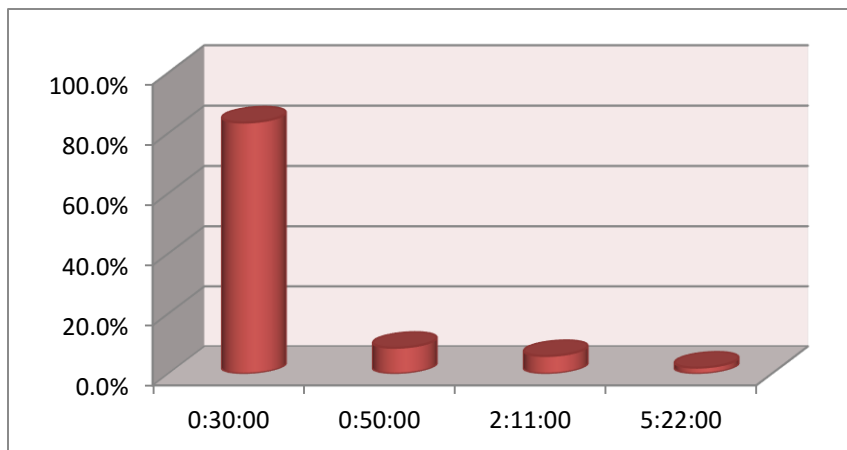


Time to fill out a standard declaration by the customs officer

min	maximum	maximum
1 min	5 hr and 22 min	22 min

The time to fill out the declaration depends on the number of commodity codes

Number of commodity codes	1 – 5	5 – 10	10 – 20	20 and more
Declaration (%)	540 (77%)	89 (13%)	46 (7%)	22 (3%)



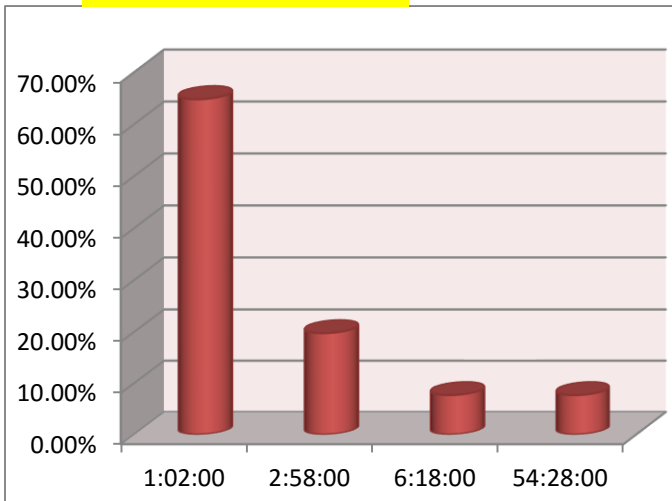


Time from registration of the declaration (issuance of C number) to assignment of the corridor (to number issuance)

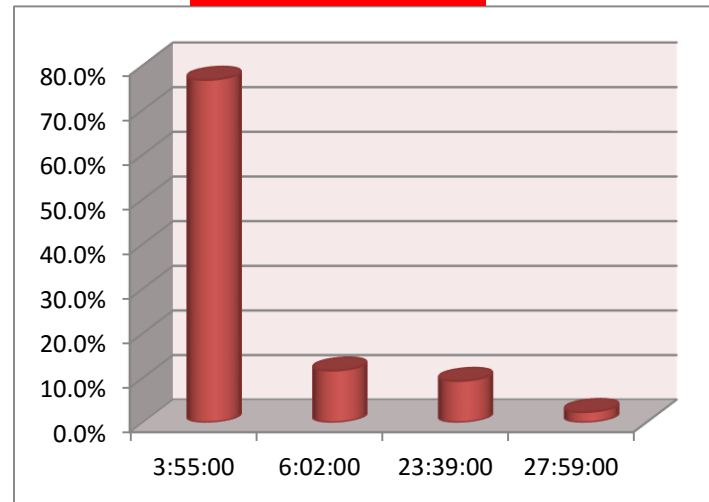
Corridor	min	maximum	average
Green	0 min	21 min	1 min
Blue	0 min	1 min	0 min
Yellow	0 min	54 hr and 28 min	3 hr and 4 min
Red	37 min	27 hr and 59 min	4 hr and 46 min



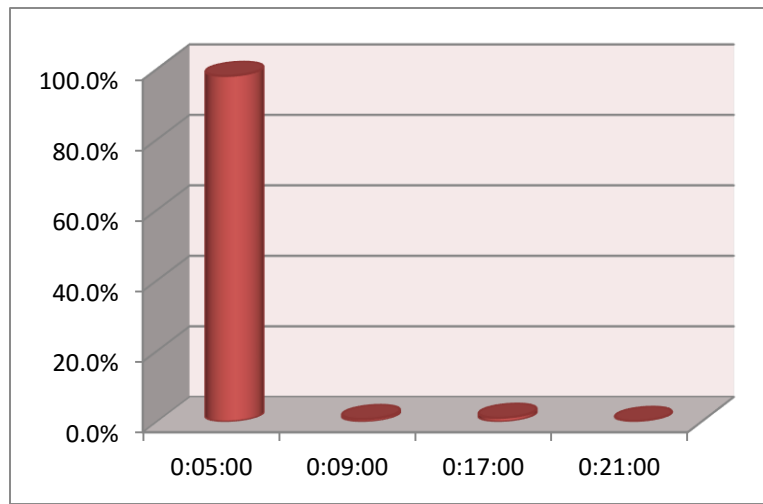
Yellow corridor



Red corridor



Green and Blue corridors





procedure	year	min	maximum	average
transit	2016	2 min	24 min	7 min
	2013	2 min	39 min	10 min
import	2016	2 min	26 min	7 min
	2013	2 min	36 min	15 min



Time for SPS control

year	min	maximum	average
2016	13 min	3 days 9 hr and 11 min	4 hr and 46 min
2013	35 min	3 days 20 hr and 30 min	9 hr and 11 min

Advance declaration – Time from arrival of the vehicles to the customs control zone to exit from the customs control zone

year	min	maximum	average
2016	1 min	10 min	4 min
2013	4 min	21 min	10 min

Additional control

procedure	year	min	maximum	average
Weighing	2016	1 min	3 min	2 min
	2013	1 min	11 min	2 min
X-ray	2016	2 min	6 min	3 min
	2013	2 min	27 min	4 min
Physical inspection	2016	5 min	6 hr and 20 min	3 hr and 16 min
	2013	8 min	7 hr and 10 min	3 hr and 33 min



The time from obtaining the queue number to the beginning of customs formalities

year	min	average	maximum
2016	0 min	20 min	1 hr and 37 min
2013	0 min	46 min	3 hr and 39 min

Documents processing by the customs officer

year	min	average	maximum
2016	0 min	22 min	21 hr and 18 min
2013	0 min	16 min	20 hr and 58 min



Time for examination

year	min	average	maximum
2016	46 min	1 hr and 38 min	3 hr and 36 min
2013	22 min	1 hr and 30 min	3 hr and 36 min

Time to fill out the declaration by the customs officer

year	min	average	maximum
2016	1 min	20 min	5 hr and 22 min
2013	2 min	26 min	4 hr and 37 min



Time from registration of the declaration (issuance of C number) to assignment of the corridor (to number issuance)

Corridor	year	min	average	maximum
Green	2016	0 min	1 min	21 min
	2013	0 min	1 min	38 min
Blue	2016	0 min	0 min	1 min
	2013	0 min	1 min	38 min
Yellow	2016	0 min	3 hr and 53 min	54 hr and 28 min
	2013	18 min	1 hr and 10 min	1 hr and 50 min
Red	2016	37 min	4 hr and 36 min	27 hr and 59 min
	2013	23 min	1 hr and 34 min	3 hr and 32 min



Challenges and Recommendations

- ▶ Time for SPS control
- ▶ Time for lab tests
- ▶ The need for customs labs
- ▶ The need for **SPS labs**
- ▶ Encouraging advance declarations
- ▶ Expanding the Study's scope (air, railway shipments)



THANK YOU FOR YOUR ATTENTION!

