



Introduction to CPMM+

Andy Sze / Max Ee



Almaty

Date : October 2017



Table of Contents

1 **Framework**

2 New Trade Facilitation Indicators

3 Revised Activities

4 Revised Excel Template

5 Implementation Time-line



Framework





Table of Contents

1 Framework

2 **New Trade Facilitation Indicators**

3 Revised Activities

4 Revised Excel Template

5 Implementation Time-line



Existing Trade Facilitation Indicators (TFIs)

TFI1 : Time Taken to Cross a BCP (Hours)

TFI2 : Cost Incurred in Border Crossing (\$)

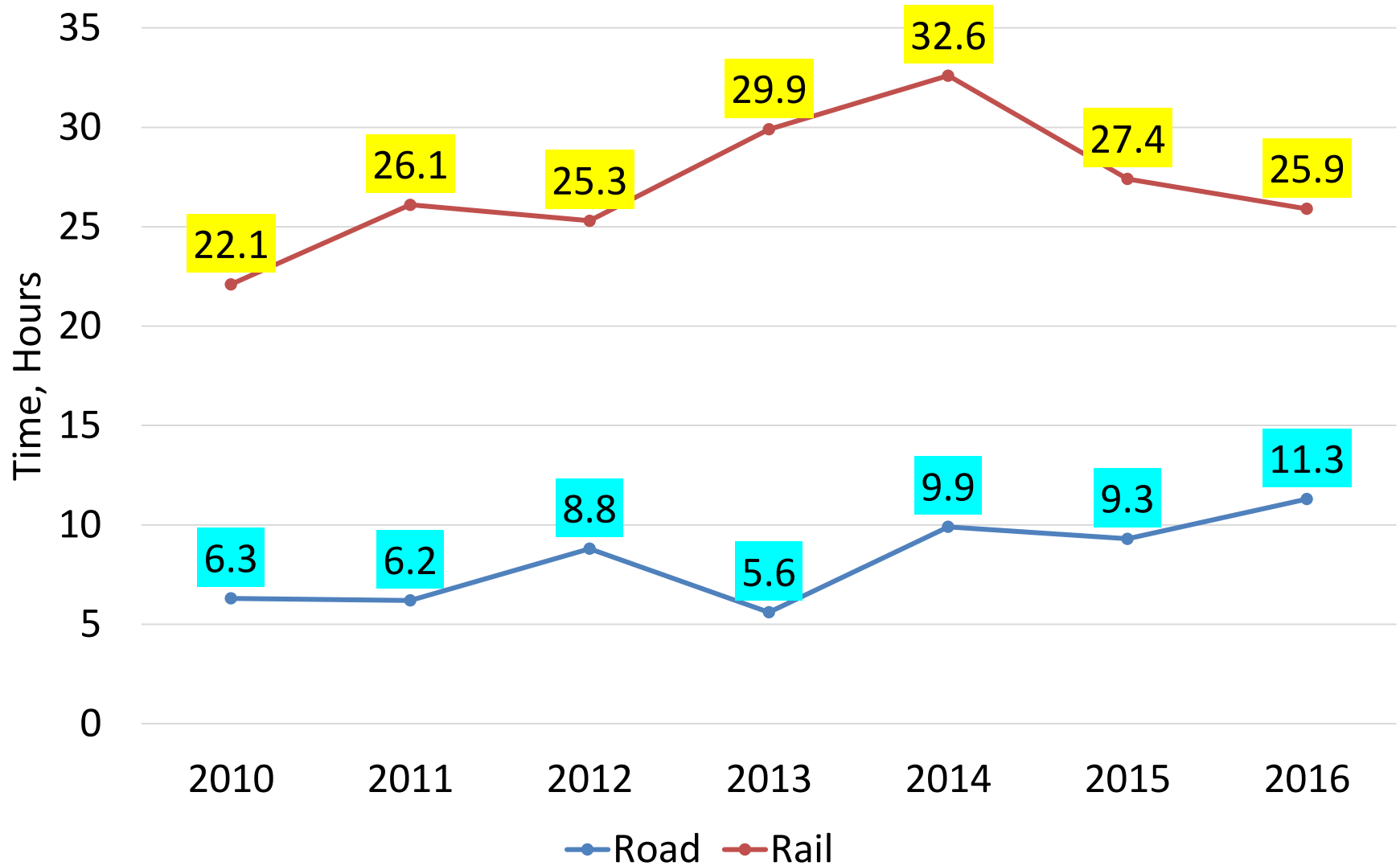
TFI3 : Cost Incurred to travel a 500 km Corridor Section carrying
20 tons

TFI4 : Average Speed Along Corridor (SWOD, SWD)

These four values are selected as part of the official indicators under Development Effectiveness Review for the Transport and Trade Facilitation Strategy (TTFS)

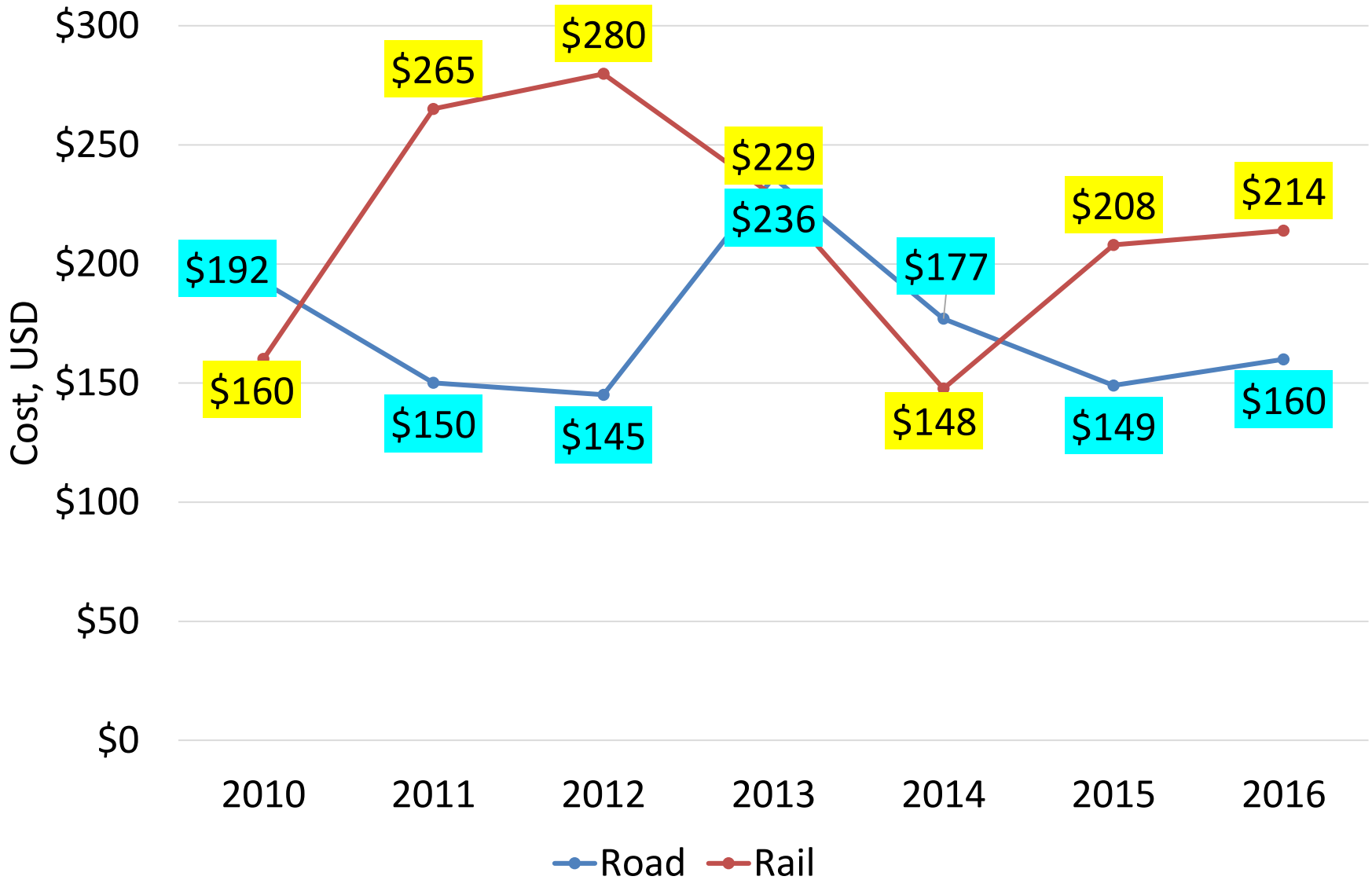


TFI1 : Average Border Crossing Time



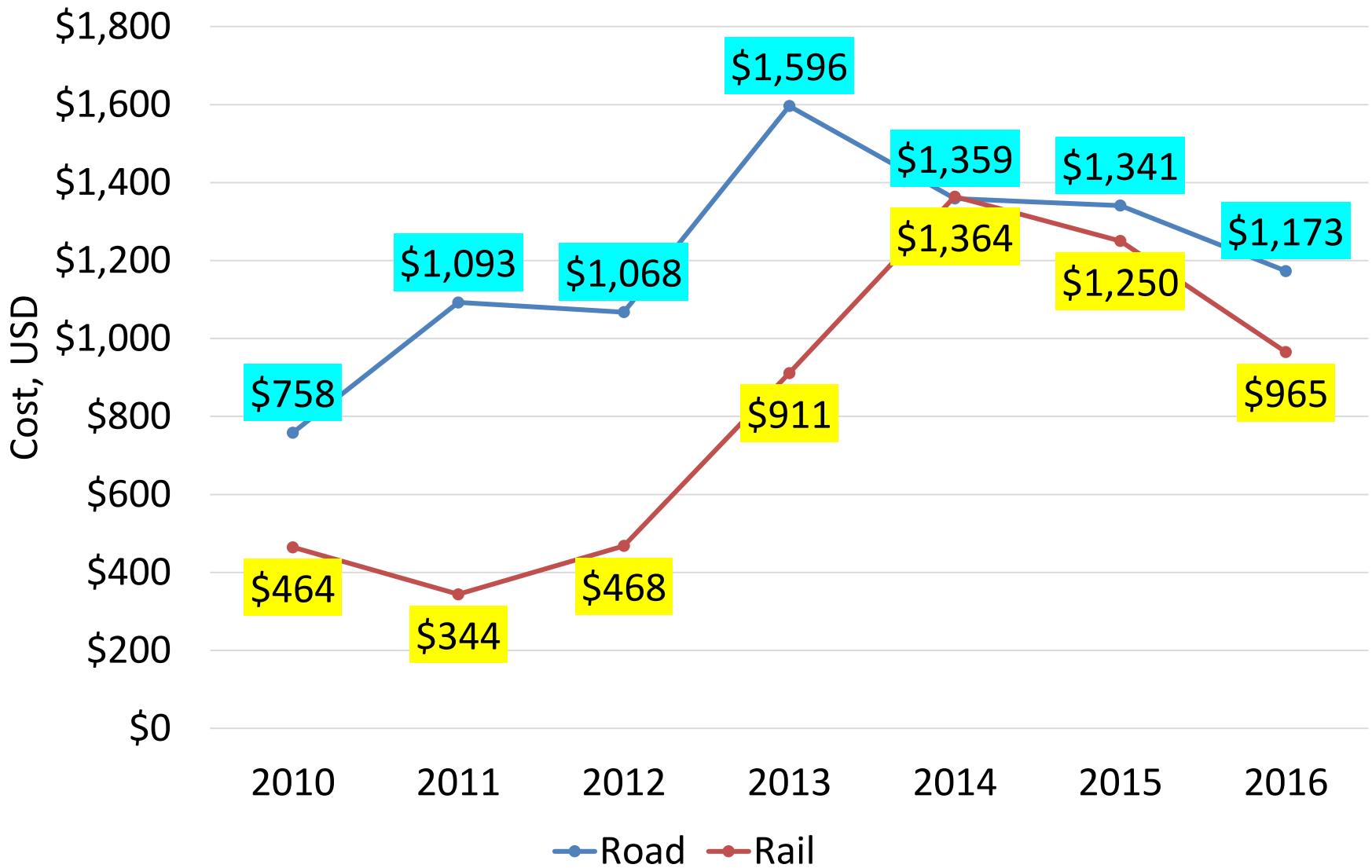


TFI2 : Average Border Crossing Cost



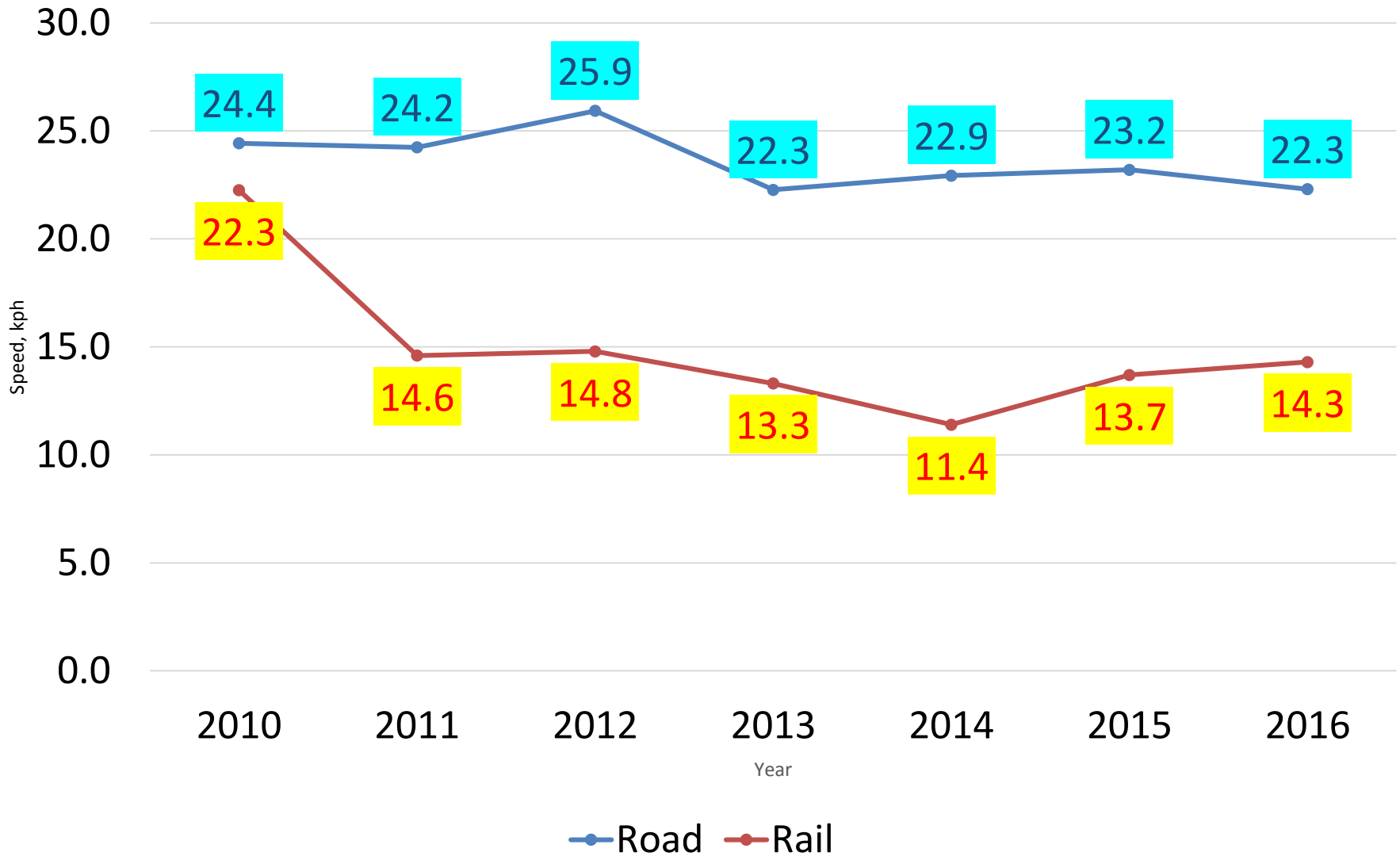


TFI3 : Average Total Transport Cost





TFI4 : Average Speed





In the new template, please report the

- Fuel Cost in USD
- Fuel Consumption in Litres

This is for ADB CAREC to analyse the impact of fuel on transport cost for **road samples**.

Some comments on CPMM are that the existing TFIs are too ‘transport-heavy’. We can consider including some new measures for trade facilitation effectiveness. Let’s discuss this in Day 2.



Table of Contents

1 Framework

2 New Trade Facilitation Indicators

3 Revised Activities

4 Revised Excel Template

5 Implementation Time-line



Frequency of **Road** Activities (Time)

			Corridors					
	Road	Overall	1	2	3	4	5	6
A.	Border Security / Control	3,942	409	393	403	972	638	1,127
B.	Customs Clearance	4,324	171	420	297	990	1,218	1,228
C.	Health / Quarantine	2,240	75	110	225	930	335	565
D.	Phytosanitary	1,911	-	232	327	360	319	673
E.	Veterinary Inspection	879	-	9	180	-	314	376
F.	Visa/Immigration	1,813	192	98	184	480	376	483
G.	GAI/Traffic Inspection	581	49	10	22	360	36	104
H.	Police Checkpoint / Stop	1,124	45	159	190	-	281	449
I.	Transport Inspection	1,026	63	64	278	-	-	621
J.	Weight/Standard Inspection	2,344	237	353	195	540	354	665
K.	Vehicle Registration	1,621	54	180	160	495	314	418
L.	Emergency Repair	56	-	-	-	-	54	2
M.	Escort / Convoy	1	-	-	-	-	1	-
N.	Loading / Unloading	1,181	50	31	80	409	149	462
O.	Road Toll	963	-	112	4	237	316	294
P.	Waiting/ Queue	2,801	144	385	183	354	959	776

Source : CPMM Annual Report 2016



Frequency of **Road** Activities (Cost)

			Corridors					
	Road	Overall	1	2	3	4	5	6
A.	Border Security / Control	2,730	210	248	298	480	566	928
B.	Customs Clearance	3,675	122	244	298	750	1,218	1,043
C.	Health / Quarantine	1,909	74	77	227	678	349	504
D.	Phytosanitary	1,308	-	127	278	60	319	524
E.	Veterinary Inspection	876	-	5	204	-	314	353
F.	Visa/Immigration	1,081	48	103	208	-	339	383
G.	GAI/Traffic Inspection	190	49	-	16	-	36	89
H.	Police Checkpoint / Stop	854	45	90	73	-	281	365
I.	Transport Inspection	1,010	63	59	277	-	-	611
J.	Weight/Standard Inspection	1,628	233	243	40	240	354	518
K.	Vehicle Registration	1,144	52	142	220	2	314	414
L.	Emergency Repair	54	-	-	-	-	54	-
M.	Escort / Convoy	104	-	-	-	-	1	103
N.	Loading / Unloading	939	48	-	72	313	146	360
O.	Road Toll	1,259	-	112	4	522	327	294
P.	Waiting/ Queue	66	48	-	-	15	3	-

Source : CPMM Annual Report 2016



Changes in Road Activities

Existing Activities

1. Border Security / Control
2. Customs Clearance
3. Health / Quarantine
4. Phyto-sanitary Inspection
5. Veterinary Inspection
6. Visa/Immigration
7. Traffic Inspection
8. Police Checkpoint / Stop
9. Transport Inspection
10. Weight/Standard Inspection
11. Vehicle Registration
12. Emergency Repair
13. Escort / Convoy
14. Loading / Unloading
15. Road Toll
16. Waiting/ Queue

Proposed Changes

1. Border Security / Control
2. Customs **Controls**
- 3. Commercial Inspection**
4. Health / Quarantine
5. Phyto-sanitary Inspection
6. Veterinary Inspection
7. Visa/Immigration
- 8. Transit Conformity**
9. Traffic Inspection
10. Police Checkpoint / Stop
9. Transport Inspection
10. Weight/Standard Inspection
11. Vehicle Registration
12. Emergency Repair
13. Escort / Convoy
14. Loading / Unloading
15. Road/**Bridge** Toll
16. Waiting/ Queue



Frequency of **Rail** Activities (Time)

	Rail	Overall	1	2	3	4	5	6
A.	Load Cargoes	7	7	-	-	-	-	-
B.	Unload Cargoes	61	61	-	-	-	-	-
C.	Fix Cargo Shift	17	-	-	-	17	-	-
D.	Remove Excess Cargo	-	-	-	-	-	-	-
E.	Transload at Gauge Change Point	704	456	-	-	248	-	-
F.	Pick-up and Deliver Wagons	60	-	-	-	60	-	-
G.	Replace/Repair Inoperable Wagon	-	-	-	-	-	-	-
H.	Emergency Repair	-	-	-	-	-	-	-
I.	Train Classification	213	196	-	-	17	-	-
J.	Document Errors	-	-	-	-	-	-	-
K.	Reissue Transit Documents	285	67	-	-	218	-	-
L.	Customs Inspection	934	585	-	-	281	-	68
M.	Technical Inspection	3	-	-	-	3	-	-
N.	Commercial Inspection	24	7	-	-	17	-	-
O.	Sanitary/Phyto-sanitary Control	-	-	-	-	-	-	-
P.	Busy reloading facilities	933	454	-	-	479	-	-
Q.	Faulty handling equipment	10	-	-	-	10	-	-
R.	No wagons available	466	449	-	-	17	-	-
S.	Restriction on entry	219	202	-	-	17	-	-
T.	Marshalling	270	253	-	-	17	-	-
U.	Waiting for priority trains to pass	64	64	-	-	-	-	-
V.	For Other Reasons	32	32	-	-	-	-	-



Frequency of **Rail** Activities (Cost)

	Rail	Overall	1	2	3	4	5	6
A.	Load Cargoes	7	7	-	-	-	-	-
B.	Unload Cargoes	61	61	-	-	-	-	-
C.	Fix Cargo Shift	17	-	-	-	17	-	-
D.	Remove Excess Cargo	-	-	-	-	-	-	-
E.	Transload at Gauge Change Point	683	456	-	-	227	-	-
F.	Pick-up and Deliver Wagons	-	-	-	-	-	-	-
G.	Replace/Repair Inoperable Wagon	-	-	-	-	-	-	-
H.	Emergency Repair	-	-	-	-	-	-	-
I.	Train Classification	-	-	-	-	-	-	-
J.	Document Errors	-	-	-	-	-	-	-
K.	Reissue Transit Documents	61	-	-	-	61	-	-
L.	Customs Inspection	687	585	-	-	34	-	68
M.	Technical Inspection	-	-	-	-	-	-	-
N.	Commercial Inspection	24	7	-	-	17	-	-
O.	Sanitary/Phyto-sanitary Control	-	-	-	-	-	-	-
P.	Busy reloading facilities	1	-	-	-	1	-	-
Q.	Faulty handling equipment	-	-	-	-	-	-	-
R.	No wagons available	-	-	-	-	-	-	-
S.	Restriction on entry	53	53	-	-	-	-	-
T.	Marshalling	-	-	-	-	-	-	-
U.	Waiting for priority trains to pass	-	-	-	-	-	-	-
V.	For Other Reasons	-	-	-	-	-	-	-



Changes in Rail Activities

Existing Activities

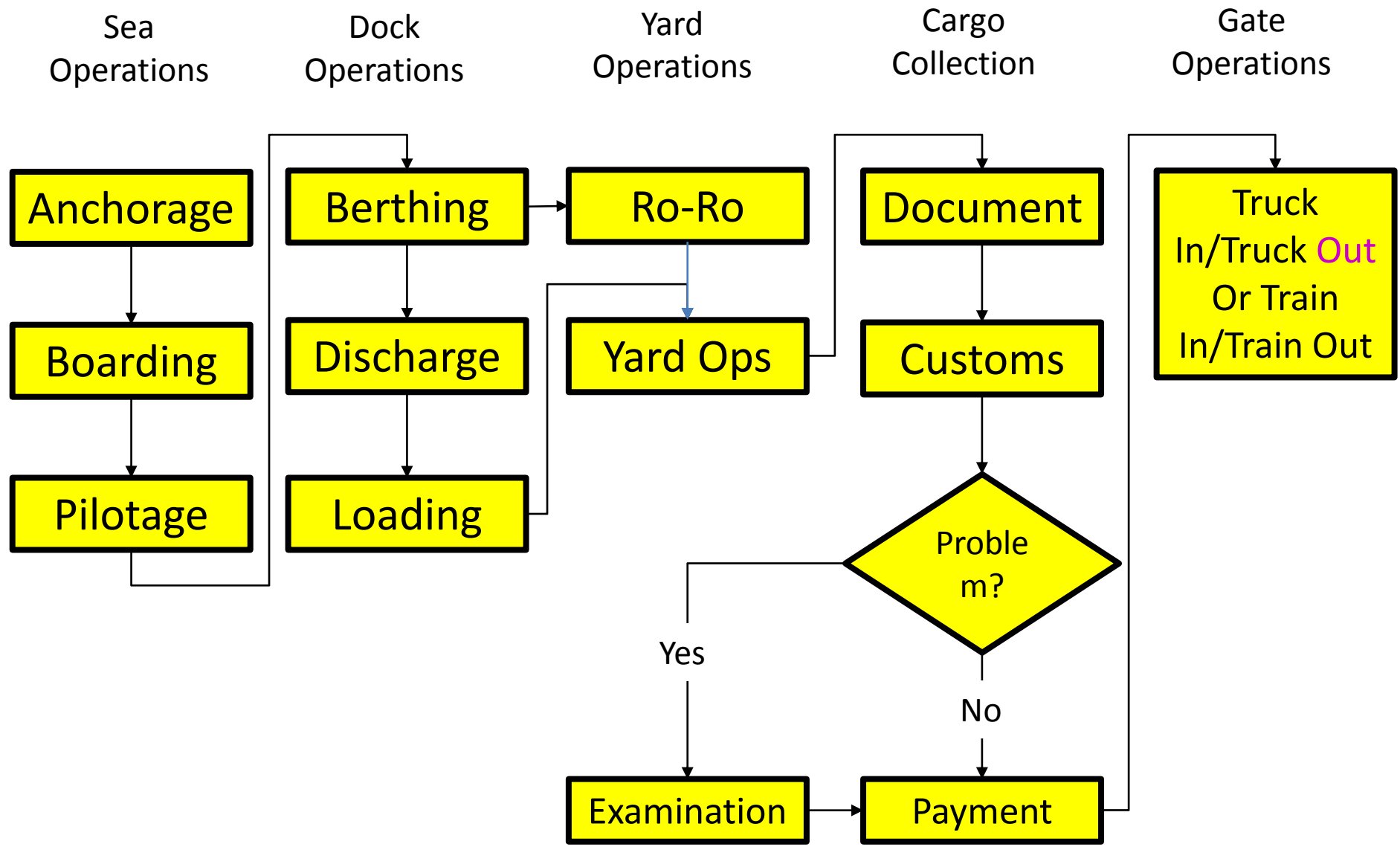
1. Load Cargoes
2. Unload Cargoes
3. Fix Cargo Shift
4. Remove Excess Cargo
5. Transload at Gauge Change Point
6. Pick-up and Deliver Wagons
7. Replace/Repair Inoperable Wagon
8. Emergency Repair
9. Train Classification
10. Document Errors
11. Reissue Transit Documents
12. Customs Inspection
13. Technical Inspection
14. Commercial Inspection
15. Sanitary/Phyto-sanitary Control
16. Busy reloading facilities
17. Faulty handling equipment
18. No wagons available
19. Restriction on entry
20. Marshalling
21. Waiting for priority trains to pass
22. For Other Reasons

Proposed Changes

1. Load Cargoes
2. Unload Cargoes
3. Fix Cargo Shift
4. Remove Excess Cargo
5. Transload at Gauge Change Point
6. Pick-up and Deliver Wagons
7. Replace/Repair Inoperable Wagon
8. Emergency Repair
9. Train Classification
10. Document Errors
11. Reissue Transit Documents
12. Customs Inspection
13. Technical Inspection
14. Commercial Inspection
15. Sanitary/Phyto-sanitary Control
- 16. Materials Transfer**
17. Faulty handling equipment
18. No wagons available
19. Restriction on entry
20. Marshalling
21. Waiting for priority trains to pass
22. For Other Reasons



Seaport Activities





Suggested Activities

Activities	Explanation
Berthing	Includes performance of anchorage, pilotage, boarding and berthing. Can be obtained by comparing the Estimated Time of Arrival (ETA) versus the Actual Time of Arrival (ATA).
Loading and Unloading	Transfer of materials between vessel and dock.
Documentation	Complete and submit paperwork.
Customs Controls	Complete Customs formalities.
Inspection and Examination	Includes X-ray scanning, or physical examination.
Waiting Time	When truck or train is waiting for cargo inside the port.

Locations of Impact

1. Aktau (KAZ) in Corridor 2
2. Baku (AZE) in Corridor 2
3. Tianjin (PRC) in Corridor 4
4. Hairatan (UZB) in Corridor 6
5. Bandar Abbas (IRN) in Corridor 6

Significance

To understand if the seaport is a bottleneck in the transport corridor.
To determine if the bottleneck is due to infrastructure or trade facilitation problems.



Table of Contents

1 Framework

2 New Trade Facilitation Indicators

3 Revised Activities

4 Revised Excel Template

5 Implementation Time-line



The Revised CPMM Template

Sample Header

Stop 1

Stop 2

Stop 3

Stop 4

No change to the header

Border Crossing Activities

Road

Time and Cost Data

Time and Cost Data

Time and Cost Data

Time and Cost Data

Rail

Time and Cost Data

Time and Cost Data

Time and Cost Data

Time and Cost Data

Water

Time and Cost Data

Time and Cost Data

Time and Cost Data

Time and Cost Data

Each stop can only have one mode of transport. Enter the data into the correct mode and leave the other modes empty.



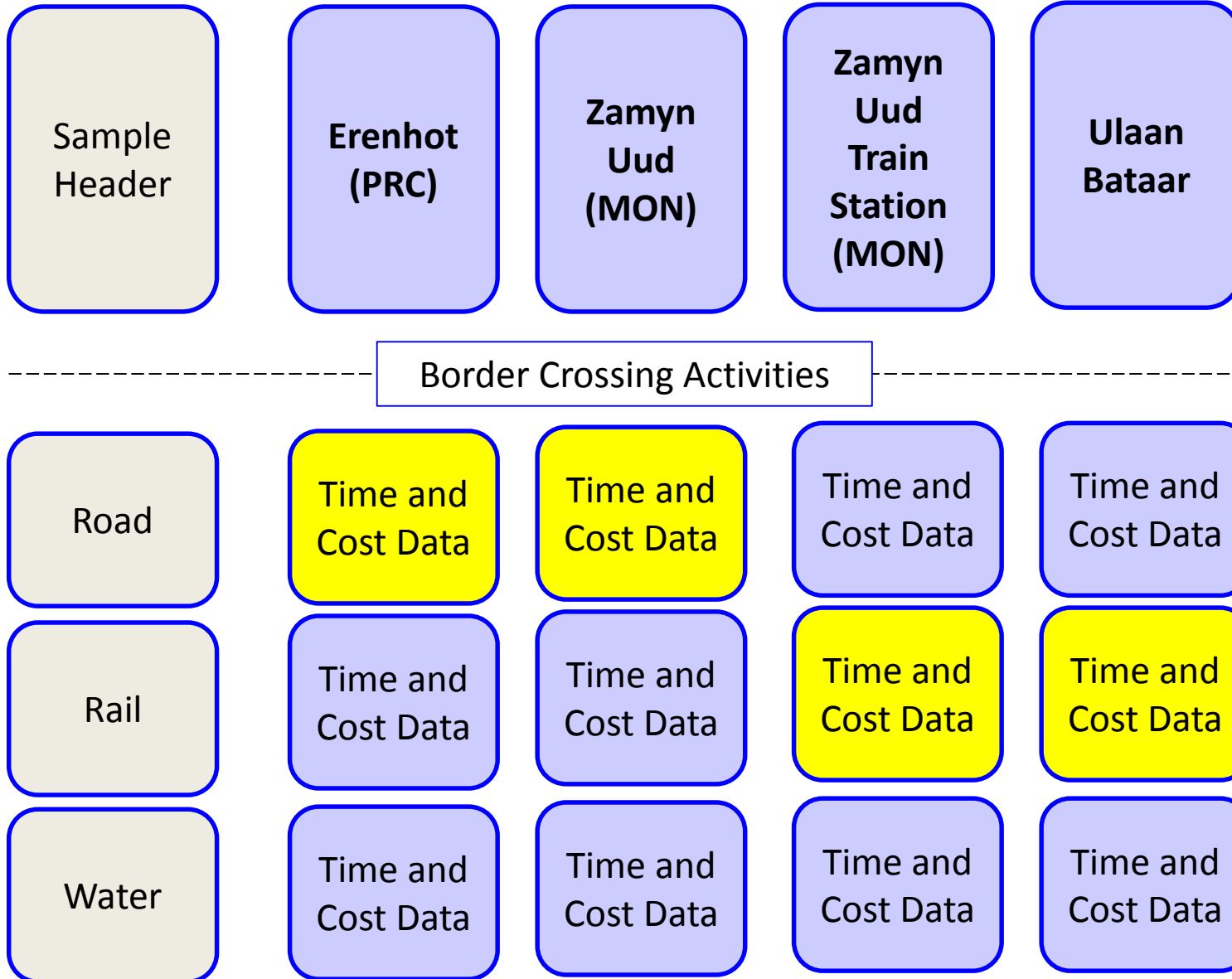
Using Revised CPMM Template - Example

Sample Header	Urumqi	Khorgos (PRC)	Khorgos (KAZ)	Almaty
Border Crossing Activities				
Road	Time and Cost Data	Time and Cost Data	Time and Cost Data	Time and Cost Data
Rail	Time and Cost Data	Time and Cost Data	Time and Cost Data	Time and Cost Data
Water	Time and Cost Data	Time and Cost Data	Time and Cost Data	Time and Cost Data

In this example, the entire shipment is carried on road. You can just enter data in the road section.



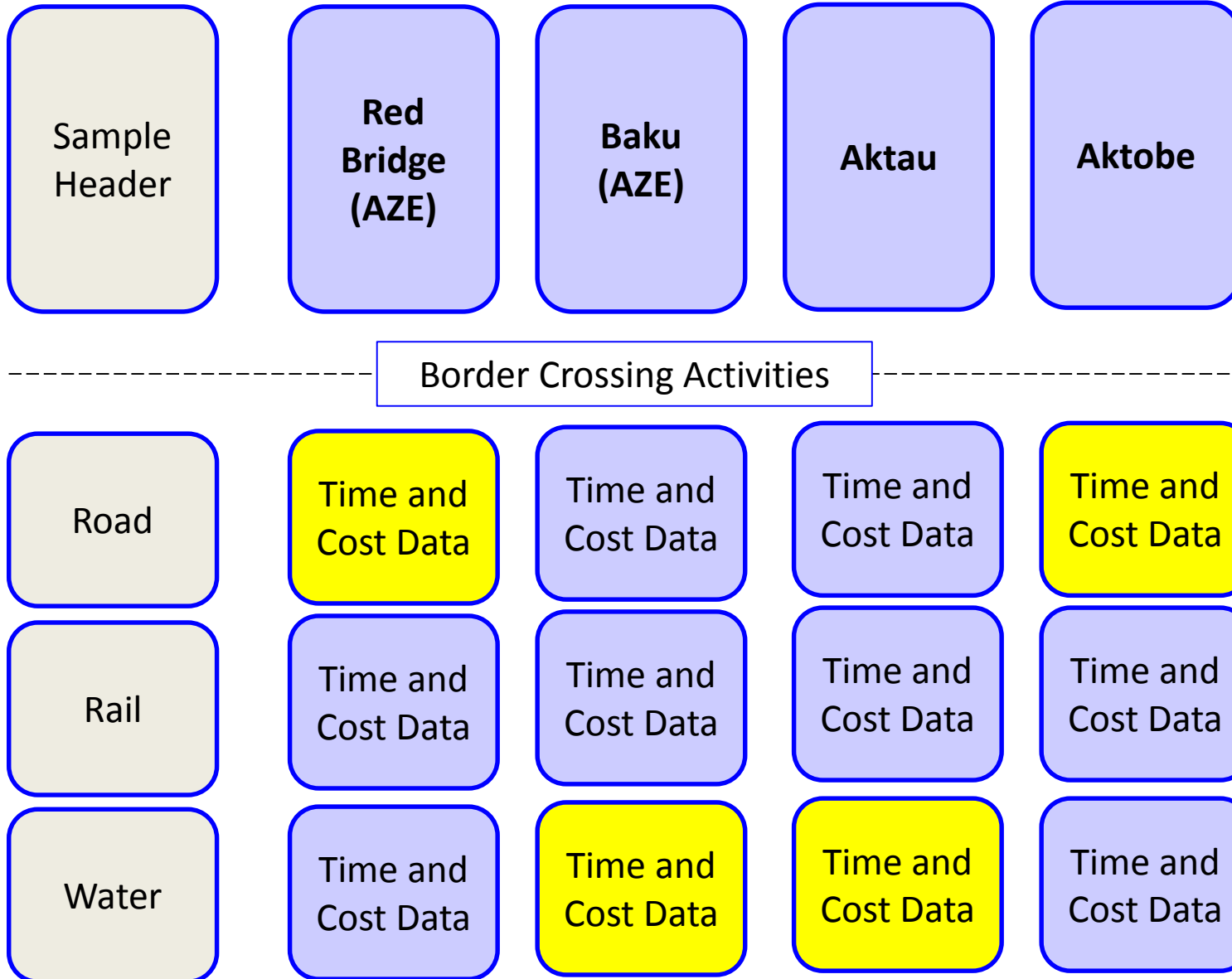
Using Revised CPMM Template - Example



This is a multi-modal sample. In this case, the rail data should be entered once the mode switches from truck to train.



Using Revised CPMM Template - Example



This is a multi-modal sample involving seaports and water transport at the Caspian Sea.



Table of Contents

1 Framework

2 New Trade Facilitation Indicators

3 Revised Activities

4 Revised Excel Template

5 Implementation Time-line



Implementation Time-Line

October

- ADB team to revise the methodology , Guide Book and template
- Disseminate the CPMM materials to the partners
- Partners review and clarify.
- ADB team to finalize the materials.

November

- Conduct the trial samples using the finalized template.

December

- Review the trial samples.
- Test the data with SAS software.
- Revise the materials if necessary.
- Inform the partners on the changes.

Q1 2018

- Adopt the latest revision and commence data collection using the latest methodology and template.