

# **CPMM Methodology Review & Quarterly Reports**

**Corridor Performance Measurement and  
Monitoring (TA 6437 REG)**

**2 March 2010  
Almaty, Kazakhstan**

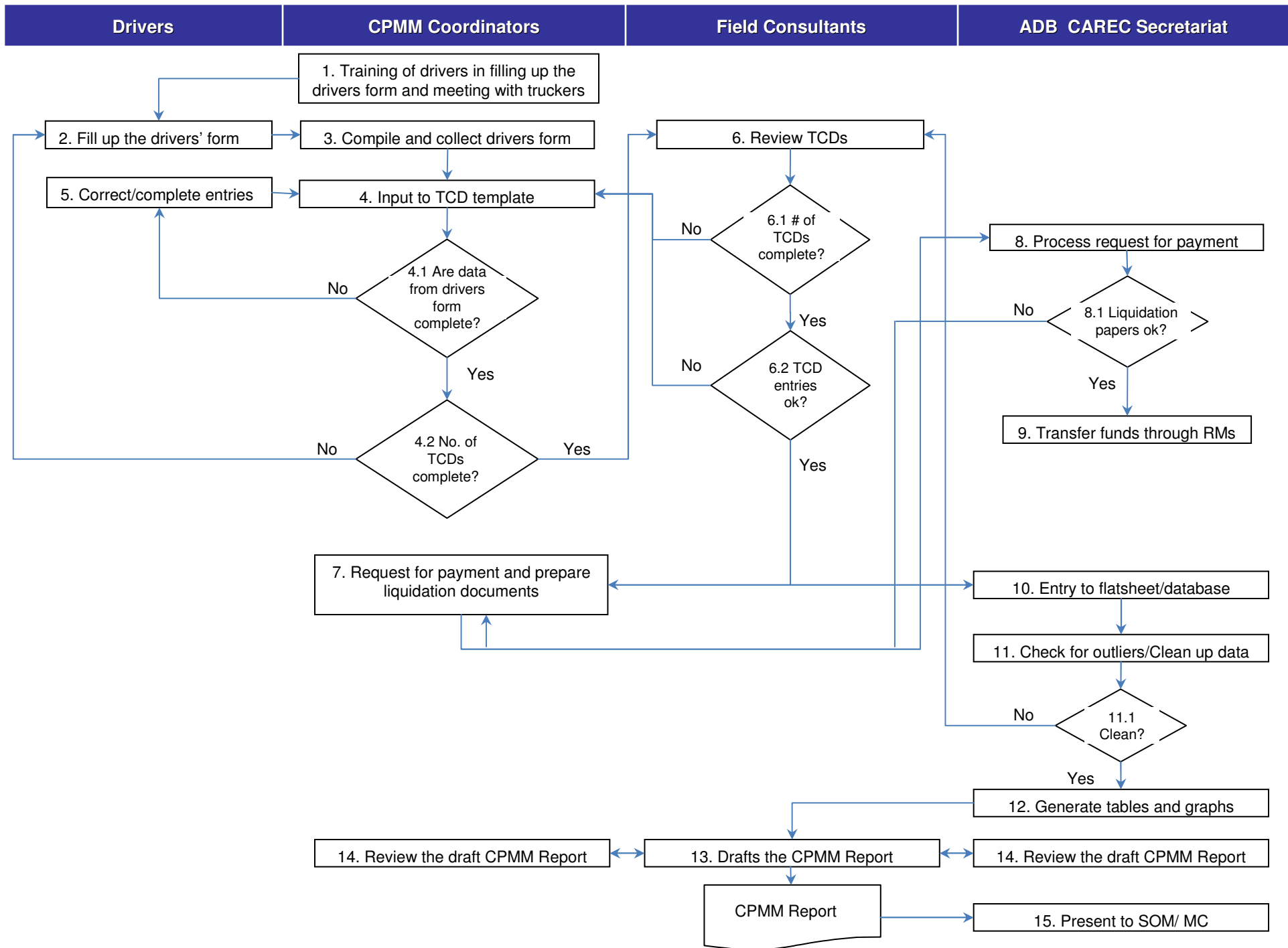
# Objectives

- 1 To illustrate and agree on the **CPMM methodology**
- 2 To highlight **persistent problems**

# Contents

1 CPMM Methodology

2 Persistent Problems



# Problem 1 : No CAREC Corridor in Form B

	A	B	C	D	E	F	G	H	I	J	K	L	M	N	O
1			ORIGIN					STOP 1							
2		Name of city:	Kirgiziya					Girgatal							
3	Place of stop	Name of country:	KGZ					TAJ							
4		CAREC Corridor													
5	Mode of transport		Road					Road							
6	Distance from previous stop (km)		80					17							
7	Duration of travel (hours)		3	20				1	hrs				mins	3	
8	Transit cost (US\$)		\$46.00					\$6.00							
9	Reason for stop		Place of Departure					Intermediate Stop							
10		Activities	Duration		Cost (USD)	Official?	Duration		Cost (USD)	Official?					
11		Health / quarantine	hrs	10	mins	\$4.00	Yes	hrs	mins						
12		Phytosanitary	hrs	8	mins	\$3.00	No	hrs	mins						
13		Veterinary inspection	hrs	10	mins	\$3.00	Yes	hrs	mins						
14		Border security / control	hrs	8	mins	\$5.00	No	hrs	mins						
15		Visa / immigration	hrs		mins			hrs	mins						
16		Customs clearance	hrs	15	mins	\$17.00	No	hrs	mins						
17		Detour	hrs		mins			hrs	mins						
18		Waiting/ queue	hrs		mins			hrs	mins						
19		Loading / unloading	hrs		mins			hrs	mins						
20		Escort / convey	hrs		mins			hrs	mins						

1. Please enter the CAREC corridor. If you cannot find the name of the city in CAREC corridor, please select '0'.

Note : You can refer to the CAREC maps. Do not leave blank on the cell 'CAREC corridor'.

## Problem 2 : Distance, Transit Time and Cost

	A	B	C	D	E	F	G	H	I	J	K	L	M	N	O
1			ORIGIN					STOP 1							
2		Name of city:	Kirgiziya					Girgatal							
3	Place of stop	Name of country:	KGZ					TAJ							
4		CAREC Corridor													
5	Mode of transport		Road					Road							
6	Distance from previous stop (km)		80					17							
7	Duration of travel (hours)		3	20					1	hrs		mins			
8	Transit cost (US\$)		\$46.00					\$6.00							
9	Reason for stop		Place of Departure					Intermediate Stop							
10		Activities	Duration		Cost (USD)	Official?	Duration		Cost (USD)	Official?					
11		Health / quarantine	hrs	10	mins	\$4.00	Yes	hrs		mins					
12		Phytosanitary	hrs	8	mins	\$3.00	No	hrs		mins					
13		Veterinary inspection	hrs	10	mins	\$3.00	Yes	hrs		mins					
14		Border security / control	hrs	8	mins	\$5.00	No	hrs		mins					
15		Visa / immigration	hrs		mins			hrs		mins					
16		Customs clearance	hrs	15	mins	\$17.00	No	hrs		mins					
17		Detour	hrs		mins			hrs		mins					
18		Waiting/ queue	hrs		mins			hrs		mins					
19		Loading / unloading	hrs		mins			hrs		mins					
20		Escort / convey	hrs		mins			hrs		mins					

1. In the new Excel, the distance is from the PREVIOUS stop to this stop.
2. Therefore, the 80km between 'Kirgiziya' to 'Girgatal' should be entered in stop 1.

# Problem 3 : Missing or Incomplete Stops Data

	A	B	C	D	E	F	G	H	I	J	K	L	M	N	O
1			ORIGIN					STOP 1							
2	Place of stop	Name of city:	Kirgiziya					Girgatal							
3		Name of country:	KGZ					TAJ							
4		CAREC Corridor													
5		Mode of transport	Road					Road							
6	Distance from previous stop (km)		80					17							
7	Duration of travel (hours)		3	20					1	hrs		mins			
8	Transit cost (US\$)		\$46.00					\$6.00							
9	Reason for stop		Place of Departure					Intermediate Stop							
10	Activities		Duration		Cost (USD)	Official?	Duration		Cost (USD)	Official?					
11	Health / quarantine		hrs	10	mins	\$4.00	Yes	hrs		mins					
12	Phytosanitary		hrs	8	mins	\$3.00	No	hrs		mins					
13	Veterinary inspection		hrs	10	mins	\$3.00	Yes	hrs		mins					
14	Border security / control		hrs	8	mins	\$5.00	No	hrs		mins					
15	Visa / immigration		hrs		mins			hrs		mins					
16	Customs clearance		hrs	15	mins	\$17.00	No	hrs		mins					
17	Detour		hrs		mins			hrs		mins					
18	Waiting/ queue		hrs		mins			hrs		mins					
19	Loading / unloading		hrs		mins			hrs		mins					
20	Escort / convey		hrs		mins			hrs		mins					

1. The stop time and costs recorded under 'Activities' still belong to the city or border point in this column.

Record all the data for 'Kirgiziya' in this column.

# Problem 4: Confusion between Transit and Stop Costs

**IMPORTANT!**

1				ORIGIN	
2	Place of stop	Name of city:	Kirgiziya		
3		Name of country:	KGZ		
4		CAREC Corridor			
5		Mode of transport	Road		
6	Distance from previous stop (km)		80		
7	Duration of travel (hours)		3	20	
8	Transit cost (US\$)		\$46.00		
9	Reason for stop		Place of Departure		
10	Activities		Duration	Cost (USD)	Official?
11	Description of stop	Health / quarantine	hrs 10 mins	\$4.00	Yes
12		Phytosanitary	hrs 8 mins	\$3.00	No
13		Veterinary inspection	hrs 10 mins	\$3.00	Yes
14		Border security / control	hrs 8 mins	\$5.00	No
15		Visa / immigration	hrs mins		
16		Customs clearance	hrs 15 mins	\$17.00	No
17		Detour	hrs mins		
18		Waiting/ queue	hrs mins		
19		Loading / unloading	hrs mins		
20		Escort / convoy	hrs mins		
21		Weigh/standard inspection	hrs mins		
22		Police checkpoint / stop	hrs 10 mins	\$6.00	Yes
23		Transport/GAI inspection	hrs mins		
24		Environment/ecology checkpoint	hrs mins		
25	Vehicle registration	hrs 10 mins	\$8.00	Yes	
26	Repair / tire replacement	hrs mins			
27	Transshipment	hrs mins			
28	Meals	hrs mins			
29	Rest/overnight stay	hrs mins			

1. Transit cost should not equal to stop cost!
2. In this example, we see the transit cost = \$46. We also see the stop cost = \$46.



*What is the difference between **transit** cost and **stop** cost?*



**Transit costs** refer to the cost of moving the cargoes from one point to another.

*This can include the freight cost, the driver's salary, petrol and vehicle rental.*

**Stop costs** are those costs paid to the activities in the Excel sheet.

## Problem 5: The last column has no data

STOP 12	STOP 13	STOP 14						
Rudaky	Terminal of Dushanbe city							
TAJ	TAJ							
Road	Road							
4								
hrs 10 mins	hrs mins	hrs mins						
\$3.00								
Intermediate Stop	Final Destination							
Duration	Cost (USD)	Official?	Duration	Cost (USD)	Official?	Duration	Cost (USD)	Official?
hrs mins			hrs mins			hrs mins		
hrs mins			hrs mins			hrs mins		
hrs mins			hrs mins			hrs mins		
hrs mins			hrs mins			hrs mins		
hrs mins			hrs mins			hrs mins		
hrs mins			hrs mins			hrs mins		
hrs mins			hrs mins			hrs mins		
hrs mins			hrs mins			hrs mins		
hrs mins			hrs mins			hrs mins		
hrs mins			hrs mins			hrs mins		
hrs 12 mins	\$3.00	No	hrs mins			hrs mins		
hrs mins			hrs mins			hrs mins		
hrs mins			hrs mins			hrs mins		
hrs mins			hrs mins			hrs mins		
hrs mins			hrs mins			hrs mins		
hrs mins			hrs mins			hrs mins		
hrs mins			hrs mins			hrs mins		
hrs mins			hrs mins			hrs mins		
hrs mins			hrs mins			hrs mins		
hrs mins			hrs mins			hrs mins		
hrs mins			hrs mins			hrs mins		
hrs mins			hrs mins			hrs mins		
hrs mins			hrs mins			hrs mins		
hrs mins			hrs mins			hrs mins		
hrs mins			hrs mins			hrs mins		

1. In the new version, the transit time, cost and distance should be filled up.
2. For instance, the distance here should refer to the kilometers from 'Rudaky' to 'Dushanbe'.

# Problem 6: New / Non-Standardized Locations

ORIGIN			STOP 1			STOP 2		
Erlian			Sheng Tong Logistics			Xin Tai Logistics		
PRC			PRC			PRC		
4b			4b			4b		
Road			Road			Road		
0			15			15		
			hrs 15 mins			hrs 20 mins		
Place of Departure			Intermediate Stop			Intermediate Stop		
Duration	Cost (USD)	Official?	Duration	Cost (USD)	Official?	Duration	Cost (USD)	Official?
hrs mins			hrs mins			hrs mins		
hrs mins			hrs 30 mins	\$28.00	Yes	2 hrs 10 mins	\$145.00	Yes
hrs mins			hrs mins			hrs mins		
hrs mins			hrs mins			hrs mins		
hrs mins			hrs mins			hrs mins		
hrs mins			hrs mins			hrs mins		
hrs mins			hrs mins			hrs mins		
3 hrs mins			hrs 10 mins			hrs mins		
hrs mins			hrs mins			hrs mins		
hrs mins			hrs mins			hrs mins		
hrs mins			hrs mins			hrs mins		
hrs mins			hrs mins			hrs mins		
hrs mins			hrs mins			hrs mins		
hrs 20 mins	\$20.00		hrs mins			hrs mins		
hrs mins			hrs mins			hrs mins		
hrs mins			hrs mins			hrs mins		
hrs mins			hrs mins			hrs mins		
hrs mins			hrs mins			hrs mins		
hrs mins			hrs mins			hrs mins		
hrs mins			hrs mins			hrs mins		
3 hrs 20 mins	20	0	0 hrs 50 mins	28	0	2 hrs 30 mins	145	0

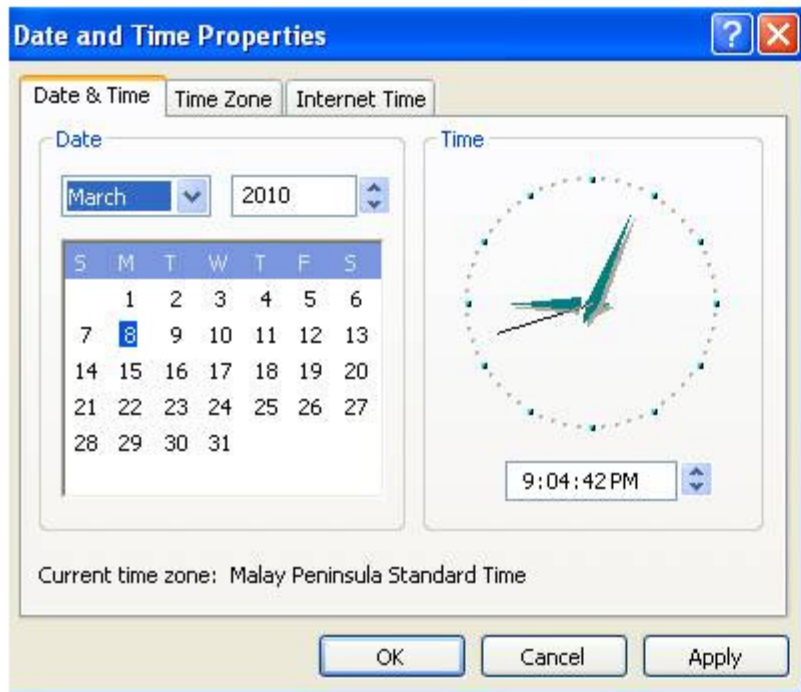
1. Preferred filling of data is the name of a location (town, city, BCP)
2. Also encountered different variants of same location (e.g. Khorgos, Korgas, Horgos etc.)

## Problem 7 : Local Currency Not Converted

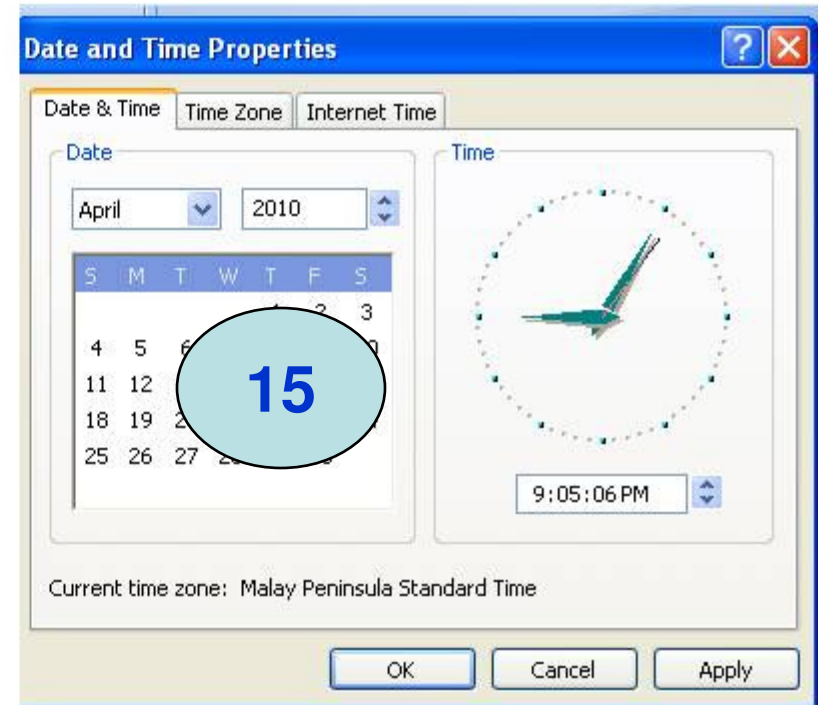
C	D	E	F	G	H	I	J	K	L	M	N	O	P	Q	R	S	T	U	V	W	X	Y	Z	AA	AB	AC	AD	AE	AF
<b>STOP 1</b>				<b>STOP 2</b>				<b>STOP 3</b>				<b>STOP 4</b>				<b>STOP 5</b>													
Khiagt				Altanbulag				Sukhbaatar				Darkhab				Ulaanbaatar													
MON				MON				MON				MON				MON													
4b				4b				4b				4b				4b													
Road				Road				Road				Road				Road													
1				25				92				219																	
hrs	15	mins		hrs	30	mins		1	hrs	50	mins		6	hrs		mins		8	hrs		mins								
\$17.00				\$435.00				\$1,601.00				\$3,812.00																	

1. All local currencies must be converted into US\$, based on the prevailing exchange rate
2. Note : In the drivers' form, the drivers are encouraged to complete the data in local currency.

## Problem 8 : Late Submission of Data



For the data in this month....



Please submit by the 15<sup>th</sup> of next month

# Thank you



**Max Ee**

Supply Chain Consultant

SCM Analytics Pte Ltd

Contact : +65 8138 8700

Email: [satica@pacific.net.sg](mailto:satica@pacific.net.sg)