



**CHANGI**  
airports international

# Singapore Changi Airport

7 April 2017

## Disclaimer

---

This document contains confidential information proprietary to **Changi Airports International** (“**CAI**”) and is solely to be used for the transaction CAI is discussing with you. Any use, circulation, or reproduction of information contained herein otherwise than in accordance with any confidentiality arrangement(s) with CAI is strictly prohibited and may be unlawful.

We may also communicate information containing personal data of individuals that is protected under the Personal Data Protection Act 2012 of Singapore (“**PDPA**”). You must collect, use or disclose such personal data in accordance with the PDPA.

# Changi Airport Group



- Corpportisation of Changi  
*1st July 2009*

# Singapore Changi Airport

---



58.7

Million passengers in  
2016



7000

Flights every week



380

Connected cities  
worldwide



iShopChangi

Online e-commerce  
for you to buy before  
you fly



>500

Awards & Accolades



5 years

Consecutive -  
"World's Best  
Airport" award

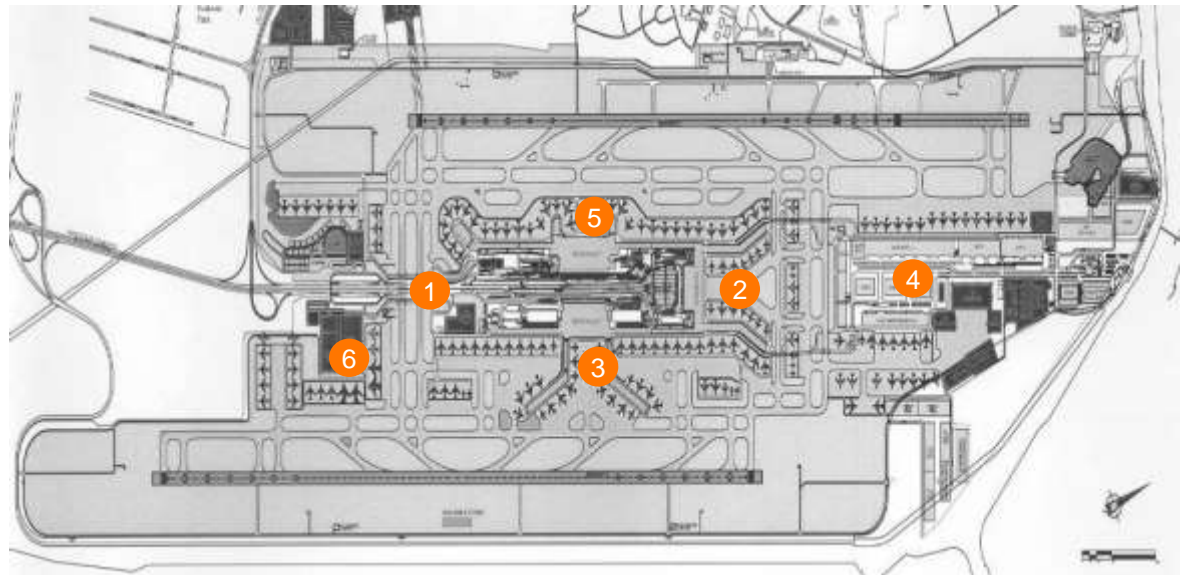
# Singapore Changi Airport

Rank	Airport	Traffic* (2015)
1	DUBAI (DXB)	77.5 million
2	LONDON (LHR)	69.8 million
3	HONG KONG (HKG)	68.1 million
4	PARIS (CDG)	60.4 million
5	AMSTERDAM (AMS)	58.2 million
<b>6</b>	<b>SINGAPORE (SIN)</b>	<b>54.8 million</b>
7	FRANKFURT (FRA)	54.0 million
8	INCHEON (ICN)	48.7 million
9	BANGKOK (BKK)	43.3 million
10	ISTANBUL (IST)	42.3 million

# Singapore Changi Airport - Long-term Planning

					
<b>AIRPORT SYSTEM</b>	<b>CHANGI TERMINAL 1</b>	<b>CHANGI TERMINAL 2</b>	<b>AIRFREIGHT CENTRE</b>	<b>CHANGI TERMINAL 3</b>	<b>TERMINAL 4</b>
1981	1981	1990	2002	2008	2017
<ul style="list-style-type: none"> <li>• 2 Runways</li> <li>• 1,300 Ha</li> <li>• Mass Transit</li> </ul>	<ul style="list-style-type: none"> <li>• 22 million pax</li> <li>• 280,000 m<sup>2</sup></li> <li>• 29 Gates</li> </ul>	<ul style="list-style-type: none"> <li>• 23 million pax</li> <li>• 358,000 m<sup>2</sup></li> <li>• 35 Gates</li> </ul>	<ul style="list-style-type: none"> <li>• 3 million tons</li> <li>• 470,000 m<sup>2</sup></li> <li>• 9 terminals</li> </ul>	<ul style="list-style-type: none"> <li>• 22 million pax</li> <li>• 380,000 m<sup>2</sup></li> <li>• 28 Gates</li> </ul>	<ul style="list-style-type: none"> <li>• Detailed planning</li> <li>• Ready by 2017</li> </ul>

- Changi Airport has built three passenger terminals and an air freight megaplex consisting of 9 cargo terminals since the construction of the airport was approved in 1975
- The airport was built on 1,300 hectares of land of which 67% was reclaimed from the sea

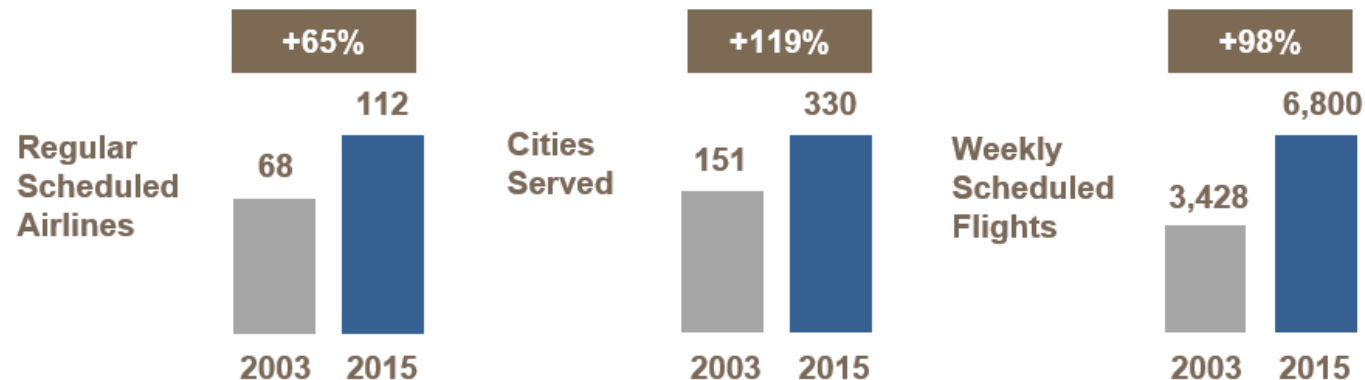


# Singapore Changi Airport - Air Hub Development

---

- Changi Airport recognises the importance of working with airlines to develop new routes and strengthen existing ones to ensure long-term growth by **creating a robust and diverse air hub**
- Changi Airport supports airlines in **maintaining strong route performance and developing new sectors**

## Network and Connectivity Growth



\*Figures correct as at May 2016.

# Singapore Changi Airport - A Distinctive Travel Experience



Efficiency and  
Convenience



Performance Standards



Customer Service



Experience  
Enhancement



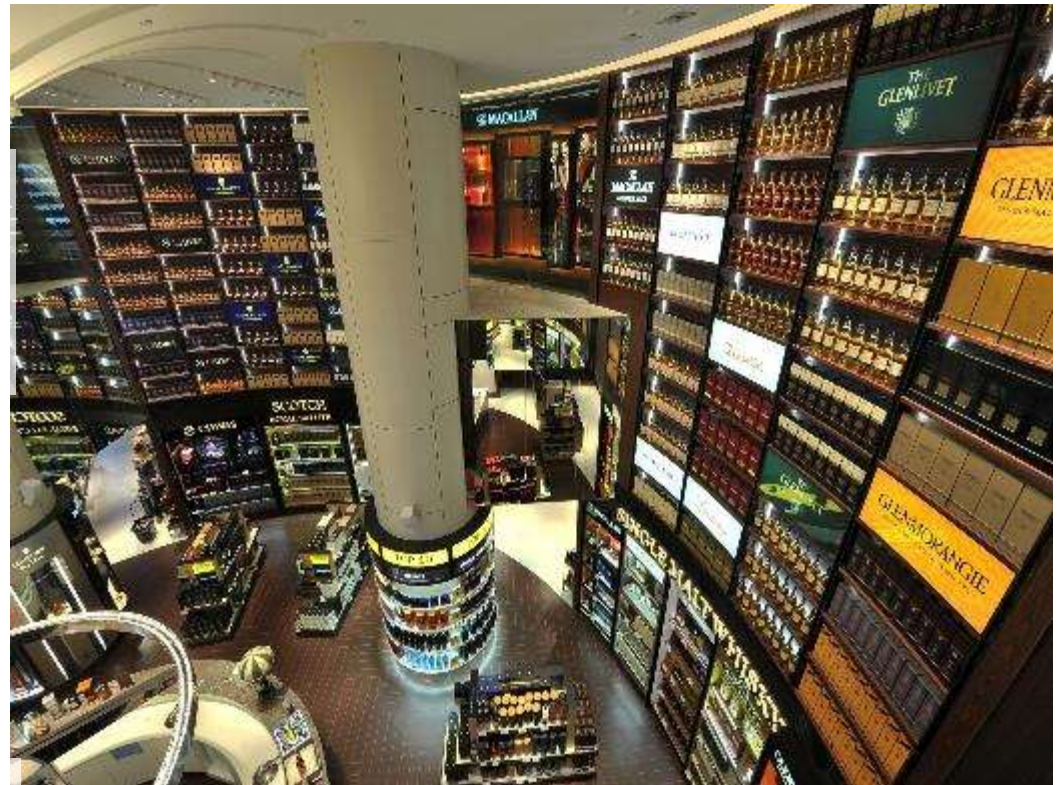
# Singapore Changi Airport - Commercial Offering



**360 retail** and **140 F&B**  
outlets in both public  
and transit areas



Earnings from retail  
subsidises charges to  
airlines



# Who is Changi Airports International

---



**We are the international arm of Changi Airport Group (CAG), the operator and manager of the award-winning Singapore Changi Airport.**

# Our Consultancy Business



**Air Hub  
Development**



**Airport  
Management**



**Commercial  
Business**



**Airport Master  
Planning**

# CAI - International Consultancy Projects



# New Developments in Changi – Terminal 4 (2017)



<https://www.youtube.com/watch?v=KSmE0TY36uk>

# New Developments in Changi – Project Jewel (2019)



<https://www.youtube.com/watch?v=B4DyO5xWR1o>

**THANK YOU**