

*Third CFCFA Annual Meeting
Bangkok
4-5 December 2012*

UNESCAP Trade Facilitation Tools and Initiatives

Potential applications to CAREC corridors

*Tengfei Wang
Economic Affairs Officer
UNESCAP
wangt@un.org*

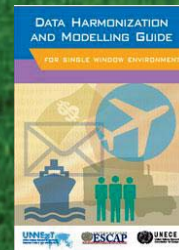
Outline

- To introduce the key ESCAP trade facilitation tools and initiatives.
- To review the key features of Business Process Analysis (BPA).
- To discuss the revised BPA model (tentatively termed BPA+) taking costs and distance into consideration
- To discuss the potential application of BPA+ to CAREC corridors

Some UNESCAP tools for trade facilitation



e-Single Window & Paperless Trading



Cross Border Data Harmonization & Exchange

National Data Harmonization



Documentation Simplification & Standardization



Process Simplification & Harmonization



Business Process Analysis

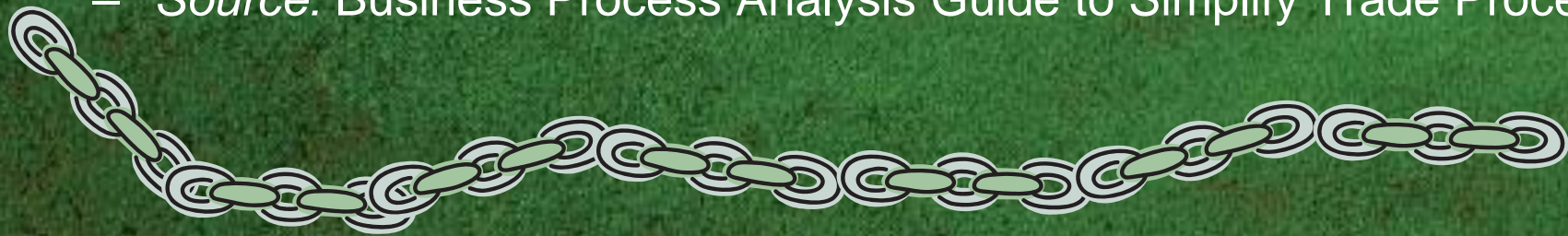
Business process

- A 'Business Process' is a collection of related and structured activities or tasks that produce a specific service or product



Business process in the context of trade facilitation

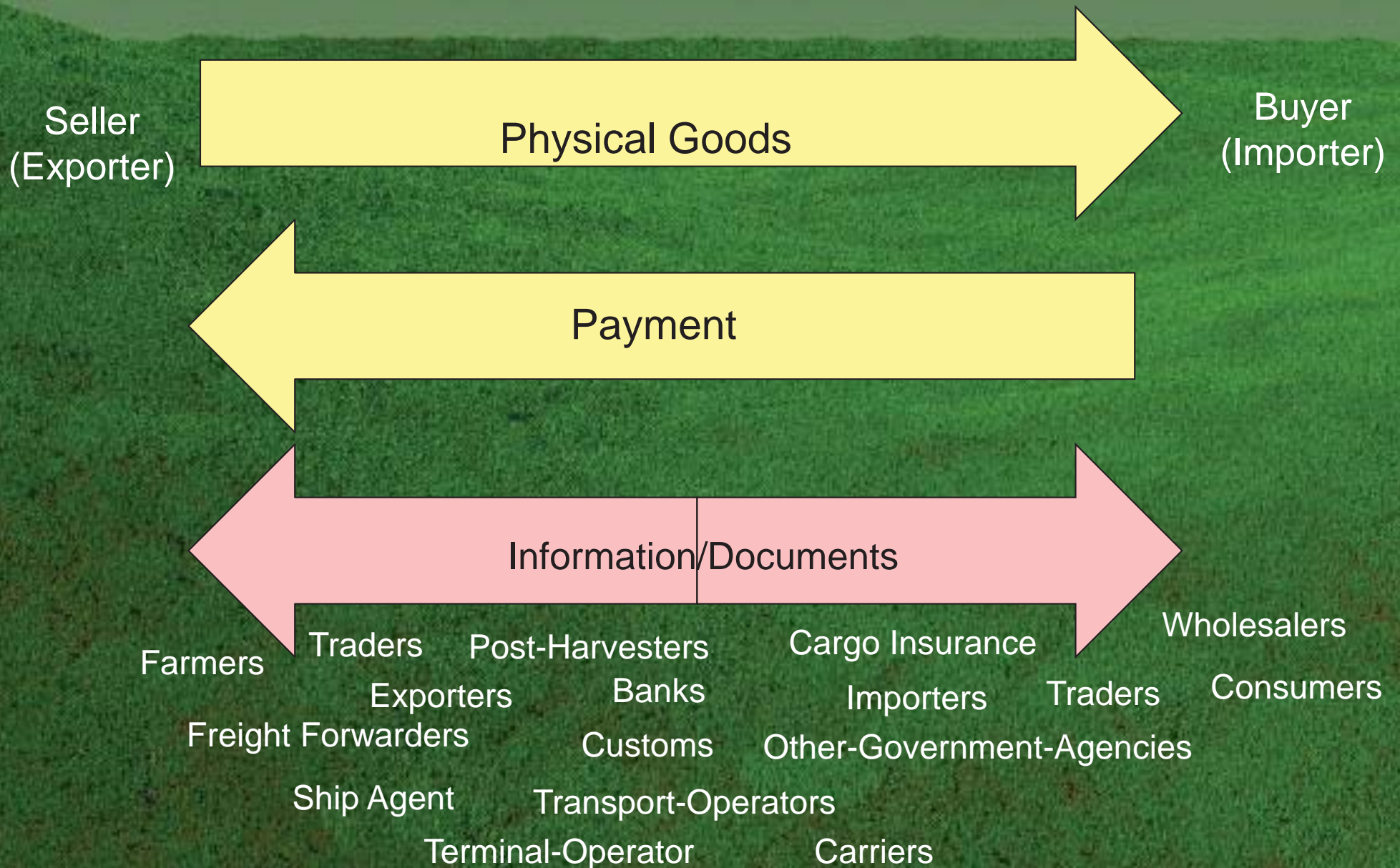
- A chain of logically connected activities to move goods and related information across borders from buyer to seller and to provide related services
 - *Source:* Business Process Analysis Guide to Simplify Trade Procedures



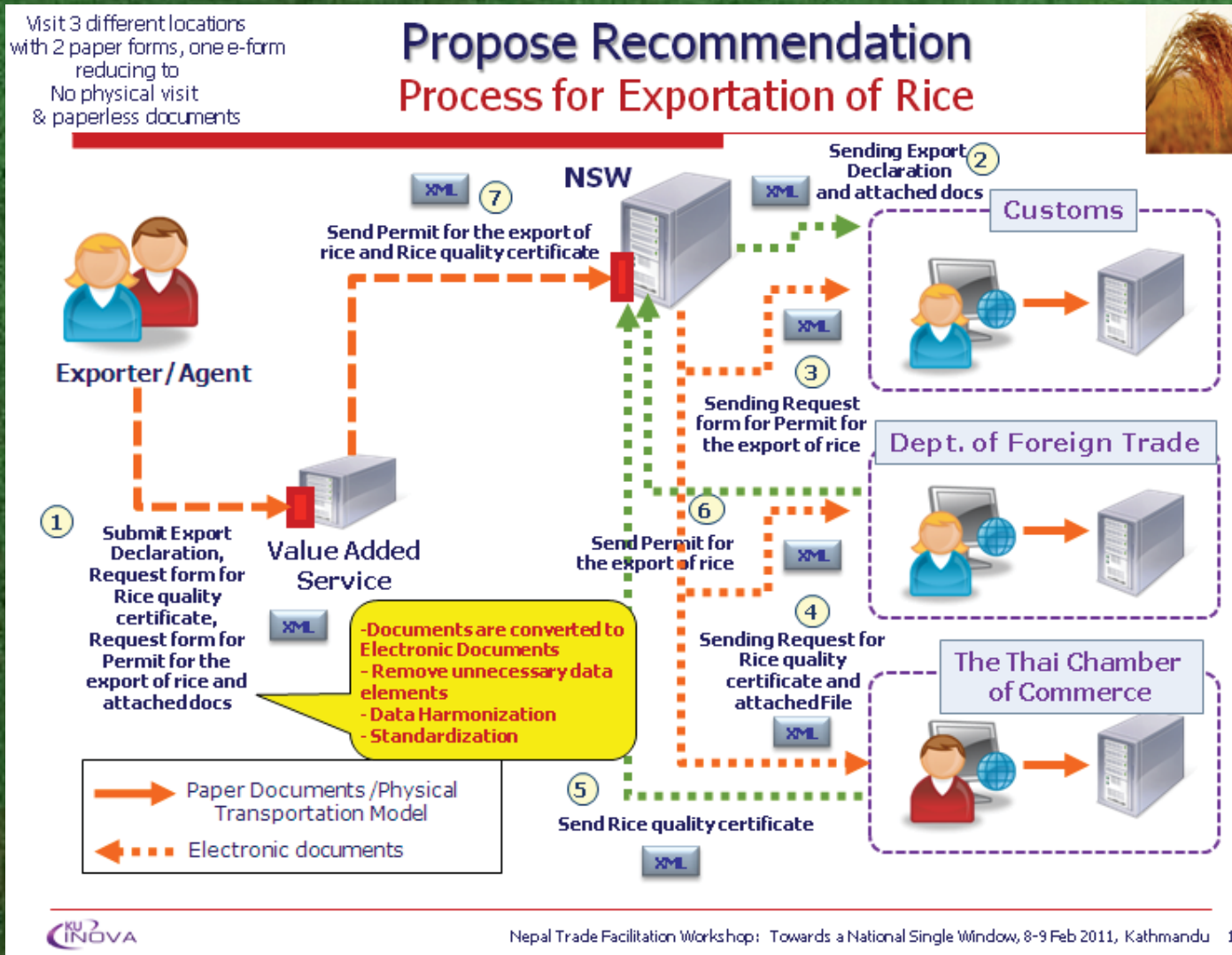
Example of business process in the context of trade facilitation:

Export garment products from Phnom Penh to New York

Flows in Trade Transactions



Business process can be complex



Documents related to Exportation of Rice

(from purchase order until the cargo container leaving the sea port)

36 Documents involving 15 parties, and more than 1,140 data elements to be filled in

Buy/Pay Docs

1. Proforma Invoice (35)
2. Purchase Order (39)
3. Commercial Invoice (51)
4. Application for Letter of Credit (24)
5. Letter of Credit (32)
6. Packing List (25)
7. Cargo Insurance Application Form (22)
8. Cover Note (23)
9. Insurance Policy (24)
10. Booking Request Form – Border Crossing (25)
11. Booking Confirmation – Border Crossing (30)
12. Booking Request Form – Inland Transport (16)
13. Booking Confirmation – Inland Transport (18)
14. Bill of Lading (42)
15. Empty Container Movement Request (TKT 305) (20)
16. Request for Port Entry (TKT 308.2) (27)
17. Equipment Interchange Report (EIR) (24)
- 18. Container Loading List (28)**
19. Container List Message (32)
20. Outward Container List (34)

Transport Docs

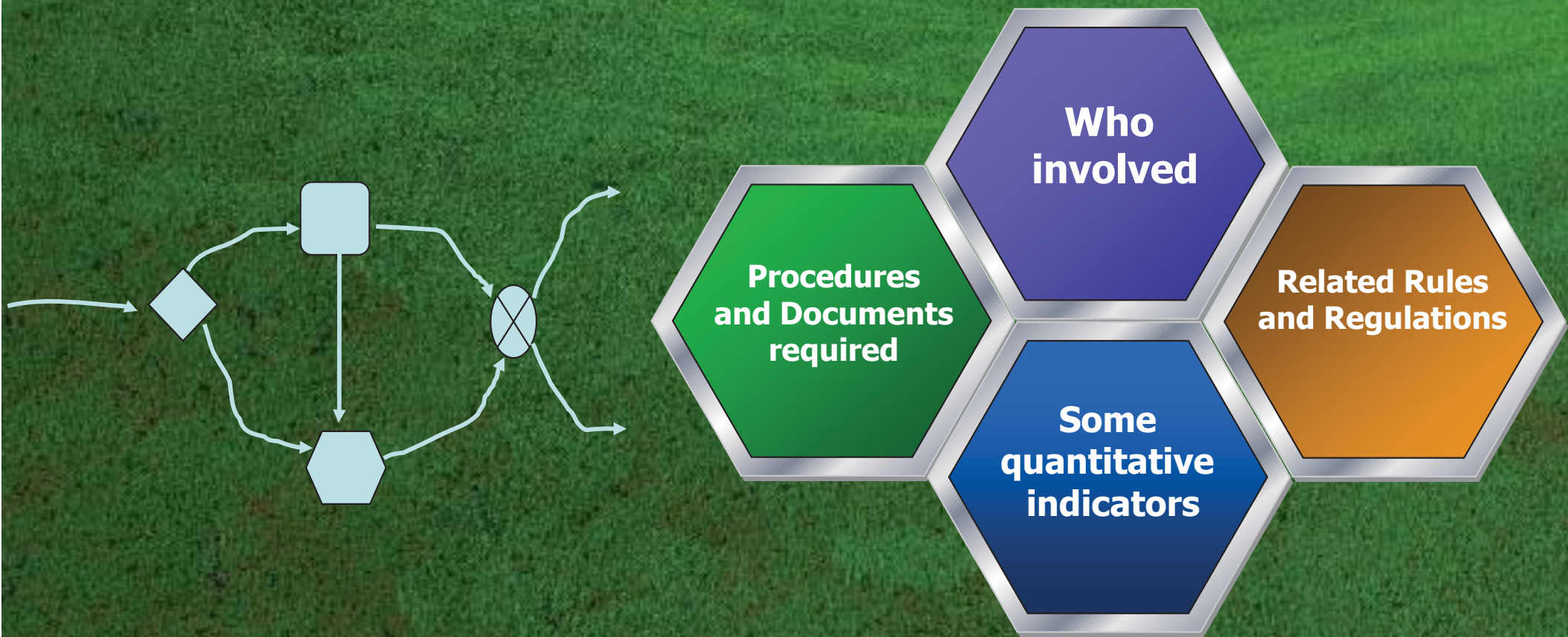
21. Master Sea Cargo Manifest(17)
22. House Sea Cargo Manifest (17)
- 23. Export Declaration (114)**
- 24. Good Transition Control List (27)**
- 25. Application for Permission to Export Rice (KP. 2) (24)**
26. Sales Report (KP 3) (21)
- 27. Application for the Collection of the Permit for the Export of Rice (A. 3) (35)**
- 28. Permit for the Export of Rice (A. 4) (35)**
- 29. Application for Certificate of Standards of Product (MS. 13/1) (44)**
- 30. Certificate of Analysis (17)**
- 31. Certificate of Product Standards (MS. 24/1) (45)**
- 32. Certificate of Fumigation (21)**
- 33. Application for Phytosanitary Certificate (PQ. 9) (29)**
- 34. Phytosanitary Certificate (33)**
- 35. Application for Certificate of Origin (42)**
- 36. Certificate of Origin (38)**

Regulatory Docs

* Number in parenthesis is the no. of data elements

Business Process Analysis

An analysis and modelling of business processes for improvement and automation



Unified Modeling Language (UML)

- A set of standard graphical notations for documenting a business process and business requirements

Tools support for BPA

Business analysis - Wiki x business process input x tool-support-for-BPA x

tfig.unece.org/contents/tool-support-for-BPA.htm

TO | Internation... Up to 75% savings...

TRADE FACILITATION IMPLEMENTATION GUIDE

UNECE
United Nations Economic Commission for Europe


Home About Intro **Domains** Suggested Itineraries Instruments Organizations Case Stories Training

Tool support for BPA

Business Process Analysis (BPA) is used by major companies in various consulting services and implementation solutions.

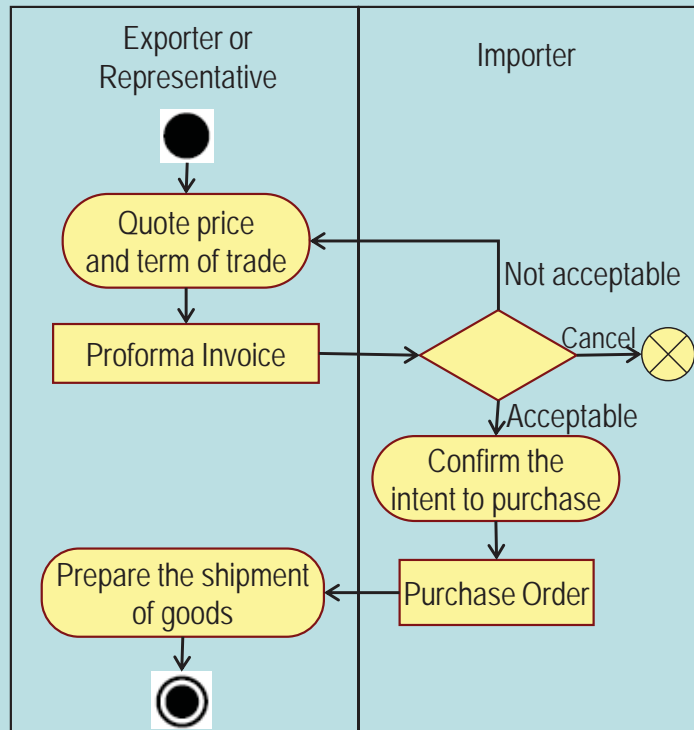
- IBM: WebSphere Business Modeler: "provides the capabilities for business users to document, visualize, report on business process models [...] plus robust modeling, simulation, and analysis capabilities to accelerate your process improvement efforts."(*)
http://www.ibm.com/developerworks/websphere/library/techarticles/0705_fasbinder/0705_fasbinder.html
- Microsoft: BizTalk and SharePoint Server: "... use real-time data inputs combined with powerful analytical and statistical software to help forecast demand for limited resources and to design efficient workflows."
<http://www.microsoft.com/health/en-us/solutions/Pages/business-process-optimization.aspx>

DOMAIN MAP



英语(美国)

UML Diagrams for BPA



Use Case Diagram

- Presents overview of core business process that are subject to further examination at a greater depth

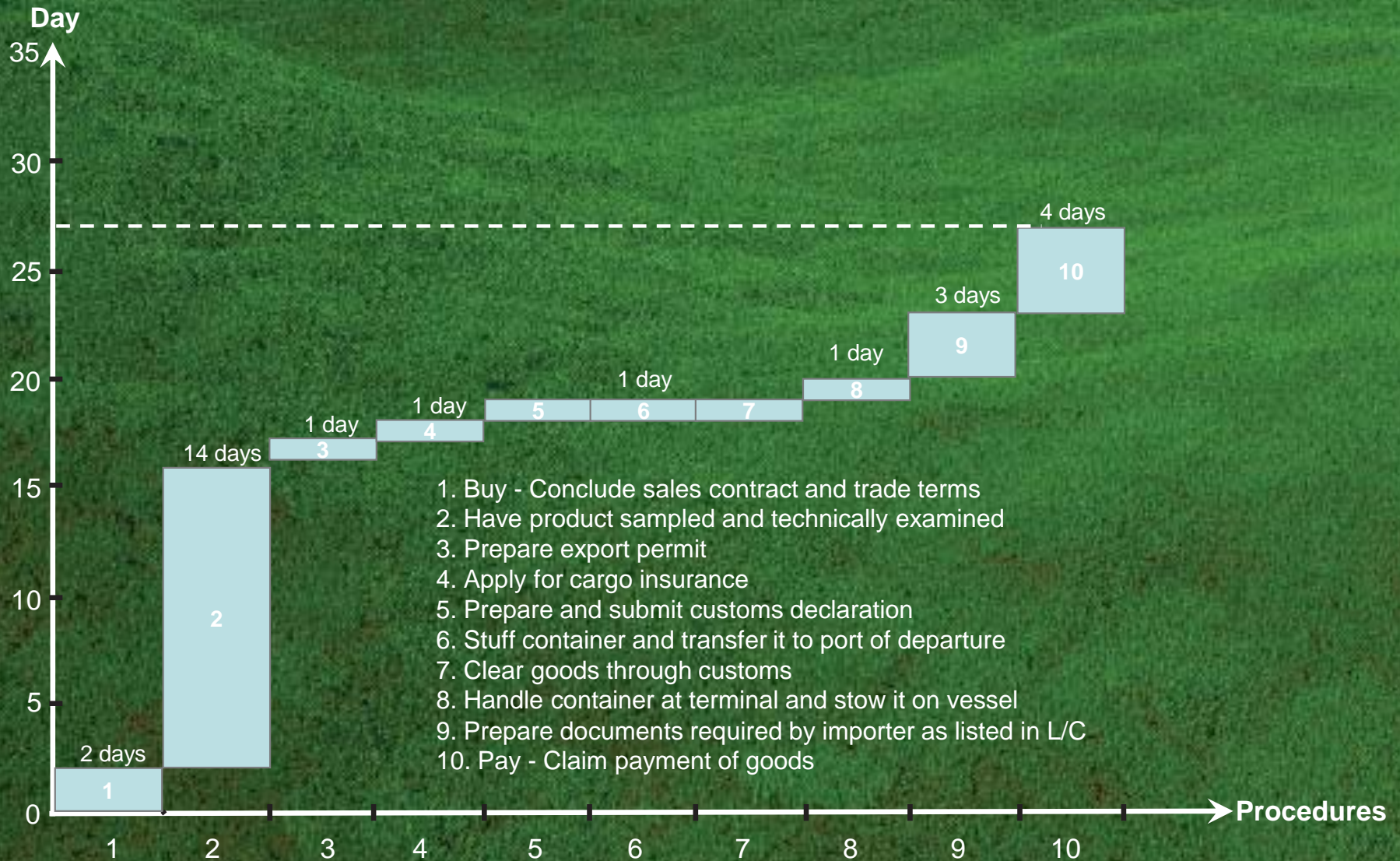
Activity Diagram

- A detailed elaboration of a use case diagram
- A graphical representation of a business process and its attributes

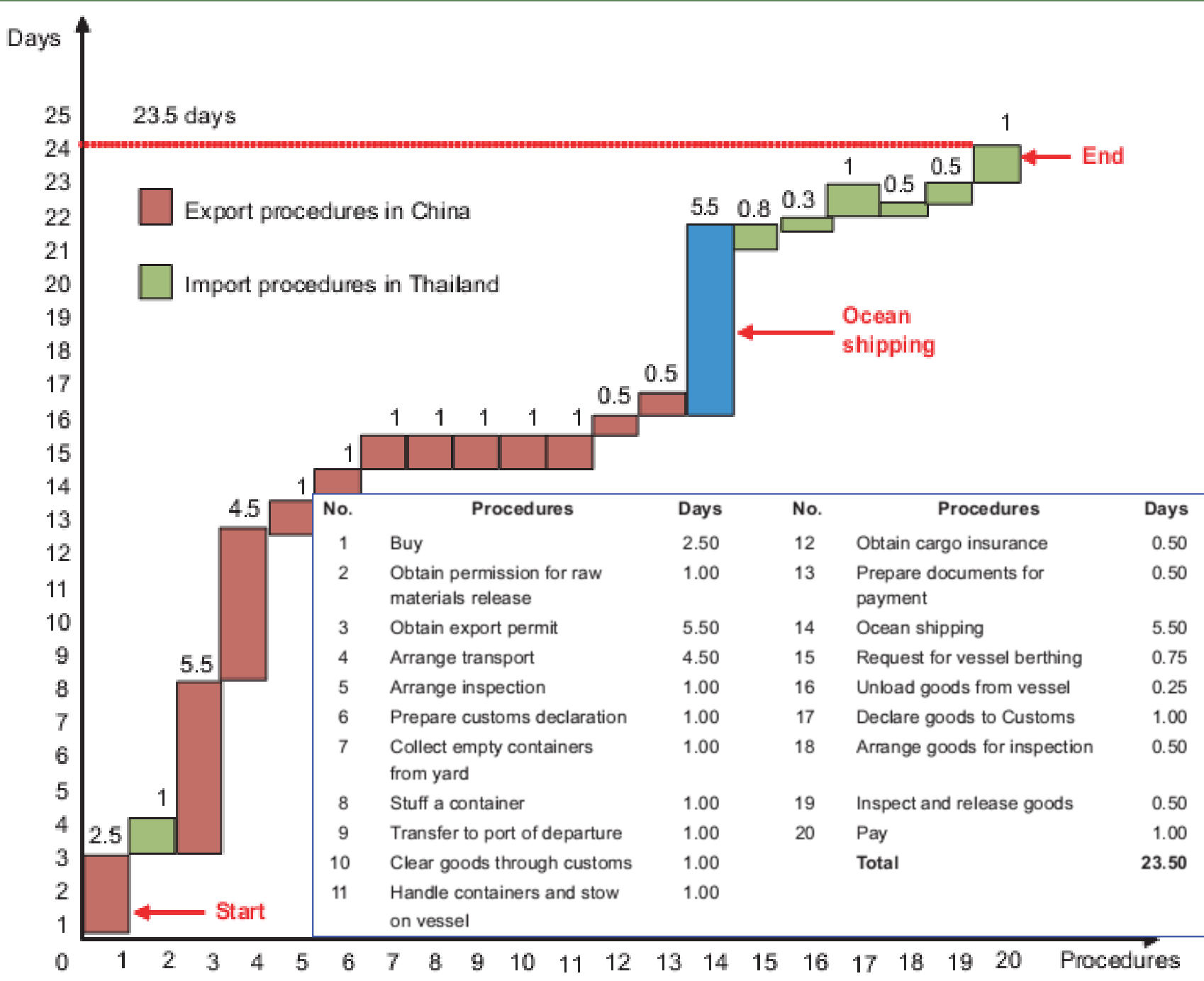
Output of BPA

Category	Outputs
As - is	Use 'case diagram' showing the scope of the business process analysis project
	Activity diagrams
	Process descriptions, including a list of trade forms and documents, as well as a list of trade-related laws, rules and regulations
	Integrated activity diagram
	Time-procedure chart
Diagnosis	A list of identified bottlenecks
Recommendations	Recommendations to improve the business process

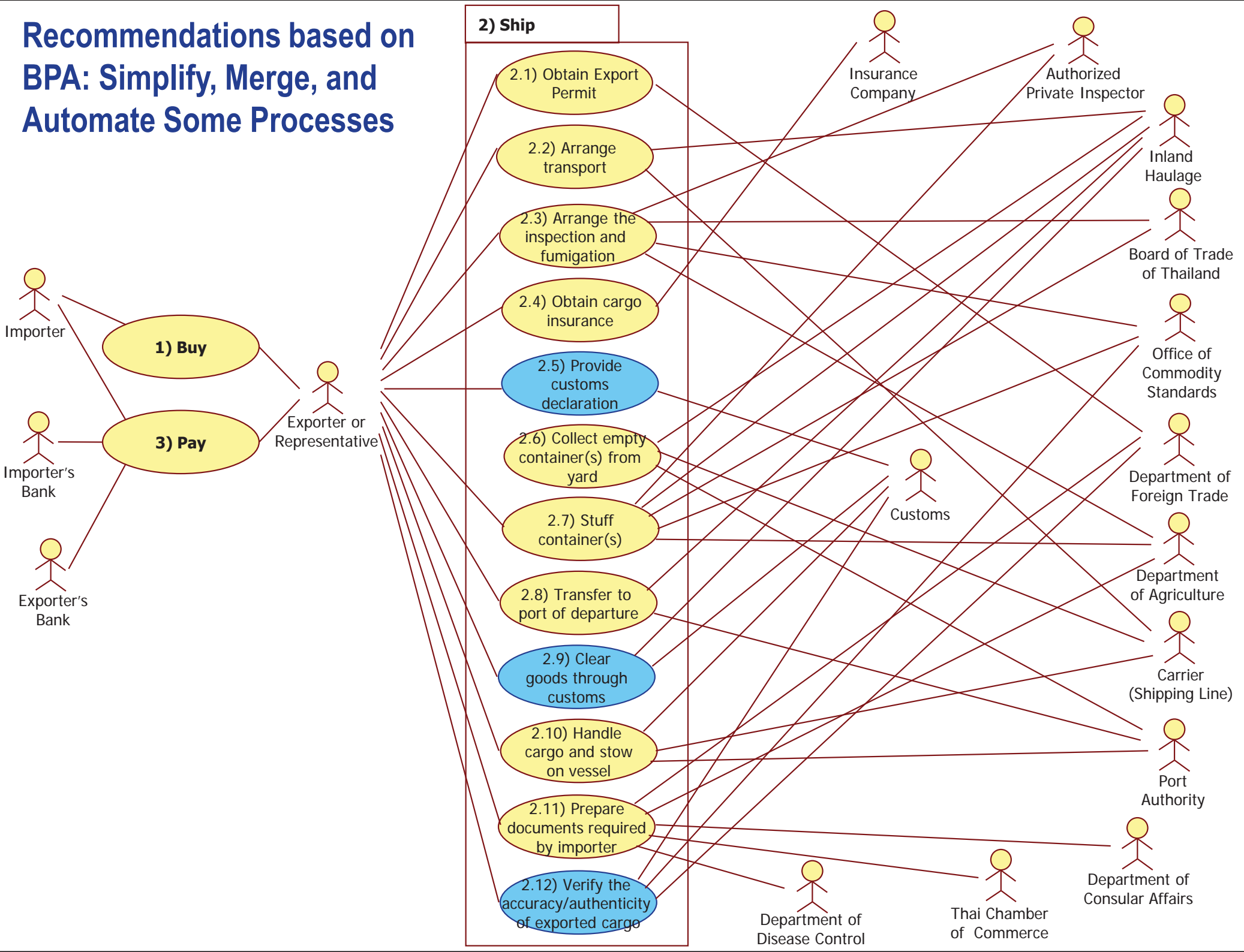
Example: Thailand's Export Process of Frozen Shrimp



Electronic device from China to Thailand



Recommendations based on BPA: Simplify, Merge, and Automate Some Processes



Application of BPA



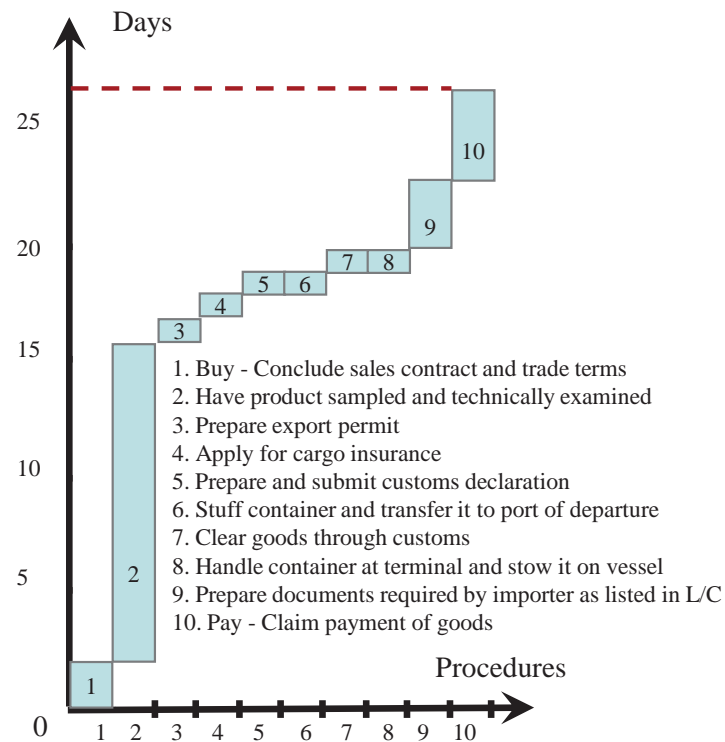
ARTNeT* Regional Study of Import and Export Processes

		Export Processes						
		Bangladesh	China	India	Japan	Nepal	Sri Lanka	Thailand
Import Processes	Bangladesh			Cotton Yarn				Sugar
	China				Fabrics*, Auto parts	Vegetable ghee (fuel)*		
	India	Garments*				Vegetable ghee*, Fabrics*	Rubber tyres	Auto parts*
	Japan	Shrimp*	Garments				Tea	
	Nepal			Textile & clothing*				
	Sri Lanka			Fabrics**	Used cars			
	Thailand		Electronics					

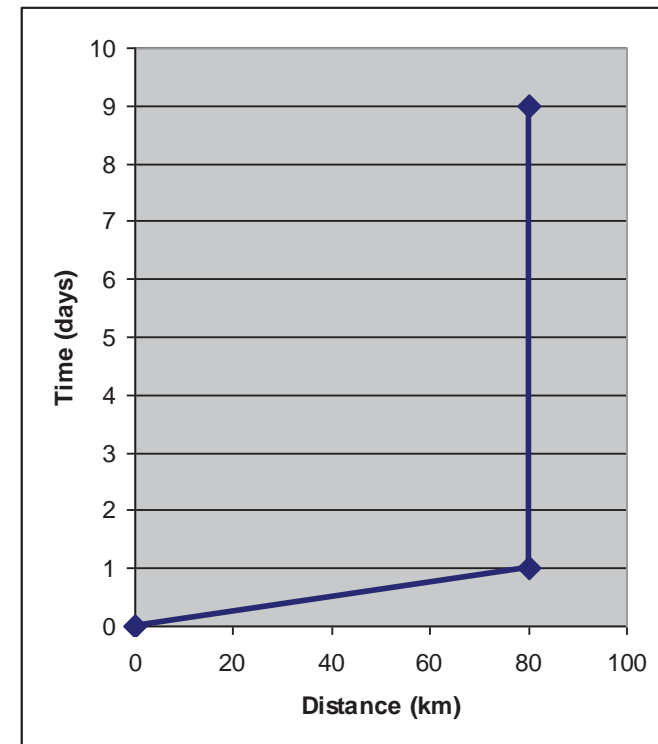
Notes: * indicates import processes excluded from analysis; ** indicates export processes excluded from analysis.

A revised BPA (BPA+) (1)

Time-procedure chart by BPA

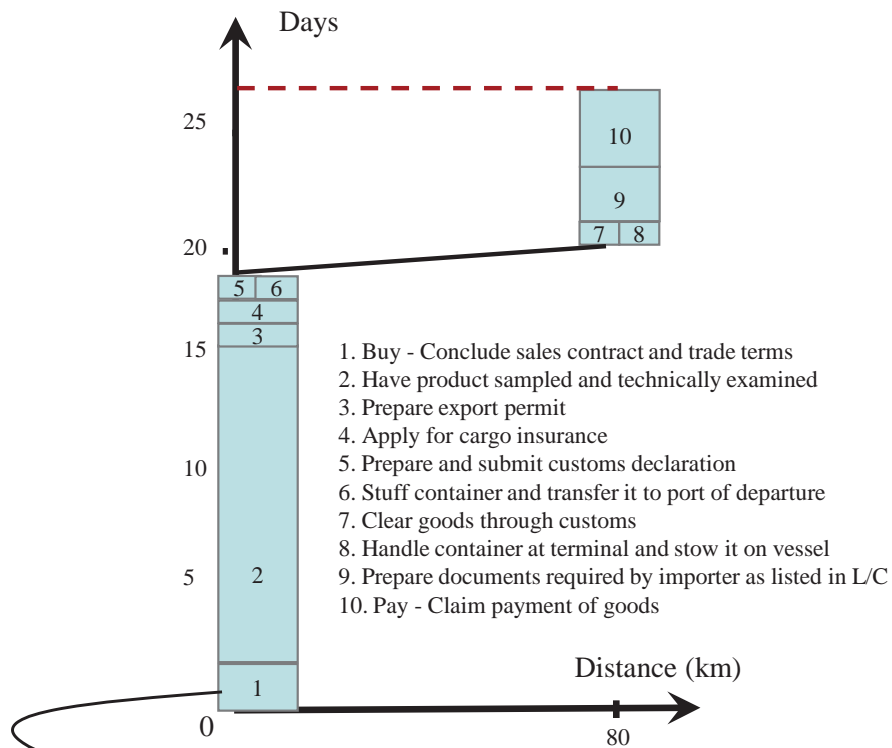


Time/Cost Distance Chart

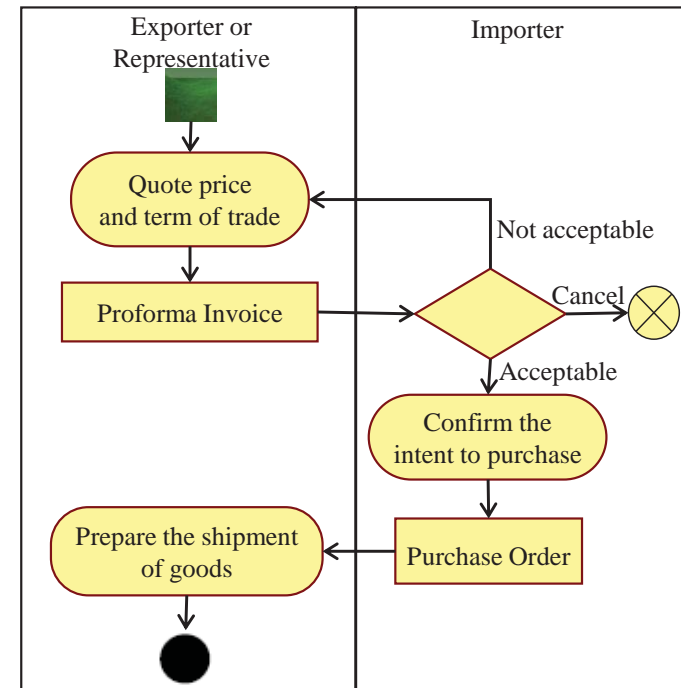


A revised BPA (BPA+) (2)

Time-distance chart by revised BPA model



Activity diagram of procedure 1



Discussion of the BPA+ model

- Upgrading from BPA to BPA+ is not too difficult
 - Additional data to be collected: costs and distance
- Incorporate the key features of Time/Cost Distance Methodology
 - BPA+ is not used to replace Time/Cost – Distance methodology

Detailed discussion of R-BPA model are available in the working paper prepared by Yann Duval and Tengfei Wang, Economic Affairs Officers from the UNESCAP. The draft paper is ready for comments and feedback

Possible Application of BPA+ model to CAREC corridors

- Corridor Performance Measurement and Monitoring (CPMM)
 - Time release studies (TRS)
 - Time/Cost – distance data
- BPA+ can provide more comprehensive information on
 - whole trade and transport corridors,
 - flows of cargoes, information, documents
 - Interaction of different players and stakeholders
- BPA+ can help to
 - identify the bottlenecks
 - streamline the corridors and supply chains

Some other (not exhaustive) ESCAP Efforts in trade facilitation

- Capacity building
 - ESCAP has helped over 10 countries to build capacity in using trade facilitation tools
- Annual Asia Pacific Trade Facilitation Forums (APTFF)
 - jointly organized by ESCAP and ADB, with collaborations from other organizations and partners.
 - APTFF 2013 will be held in China.



Memory from
APTFF 2012
Sri Lanka

APTFF 2013
China



Thank you for your attention

For more details, please visit

www.unescap.org/tid

or send an email to

wangt@un.org