

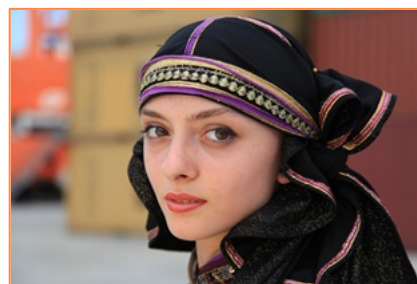


**Batumi International  
Container Terminal LLC**

*An ICTSI Group Company*

# BATUMI INTERNATIONAL CONTAINER TERMINAL

## Company Presentation



**Excellence Uncontained**

# Background



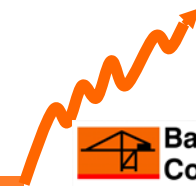
**Batumi International Container Terminal LLC (BICT)** is the first and only maritime container terminal in Georgia where vessel handling and storage of containers are within the port area.

From November 2007 the Container Terminal, Ferry Bridge and General Cargo berth (6) at the Batumi Seaport have been operated by BICT.

Batumi International Container Terminal officially started its containerized cargo handling service on the 2<sup>nd</sup> of March 2008 with the arrival and service of M/V MSC GRANADA, the first ever container ship to dock in Adjara, Georgia.

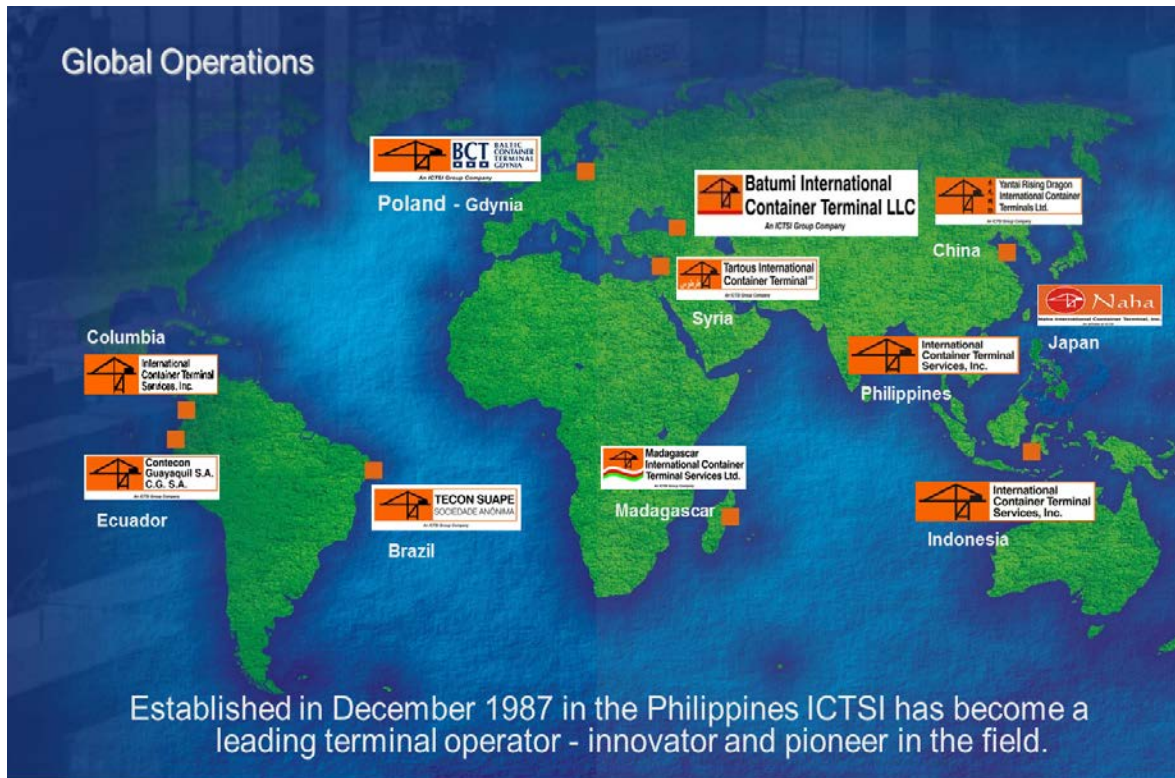


# International Container Services Inc., ICTSI

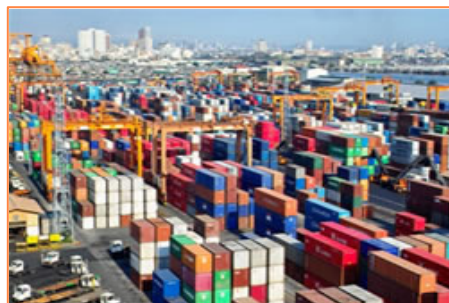


**Batumi International Container Terminal LLC**  
An ICTSI Group Company

## Global Operations

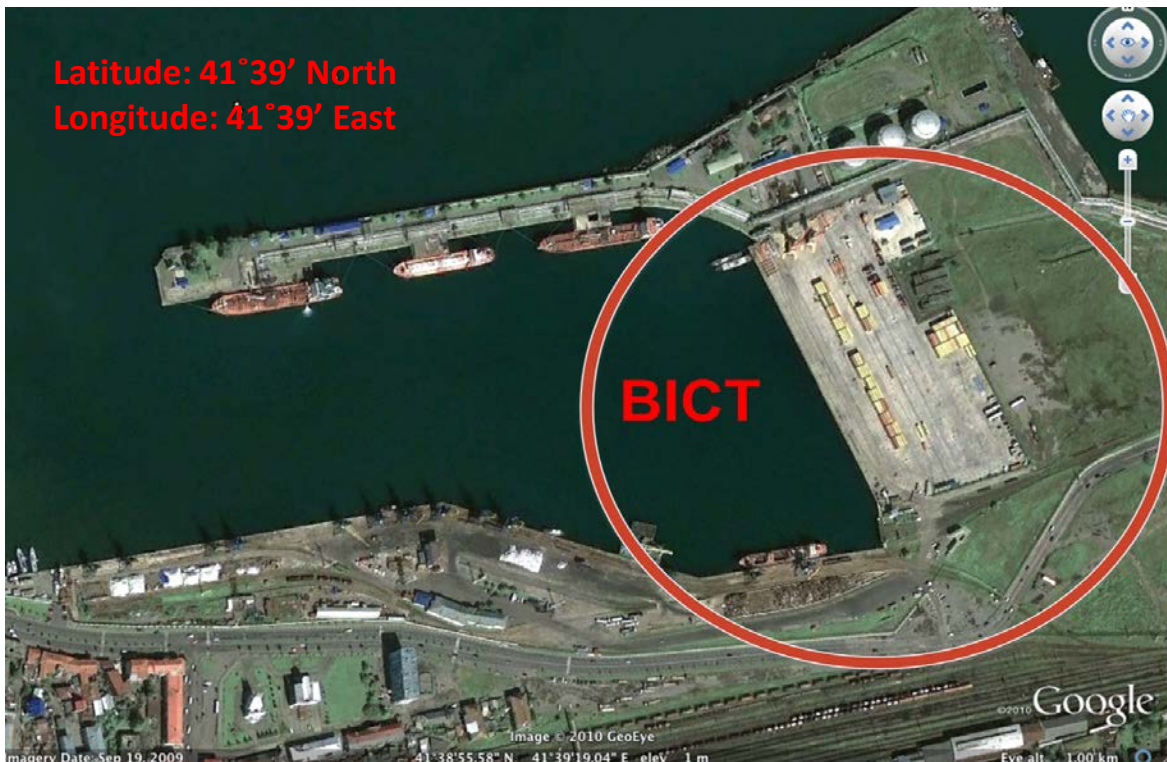


BICT is a subsidiary of International Container Terminal Services Inc., ICTSI a Philippine based company established in 1987 and widely recognized as a leading terminal operator, innovator and pioneer in its field. ICTSI manages, develops, and operates 24 Terminals in 18 countries.



Excellence Uncontained

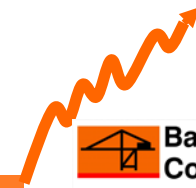
# Geographical coordinates & location



BICT operates and manages the container, ferry and dry dock terminals at the Batumi Sea Port. The Batumi Port is one of the key transportation trade points in the Black Sea Basin.



# Geographical coordinates & location

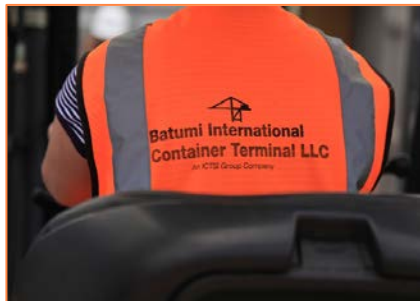
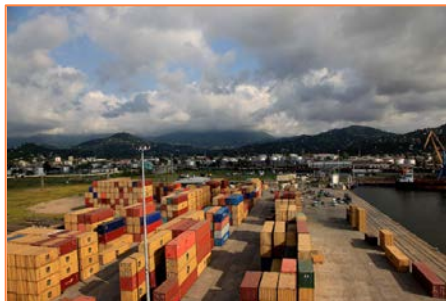


**Batumi International  
Container Terminal LLC**  
An ICTSI Group Company



Latitude: **41°39'** North  
Longitude: **41°39'** East

Located in Adjara, Georgia the port is also last stop of the Transcaucasian railroad and Baku oil pipeline. The Terminal is some 20 kilometers away from the Turkish border.



# Infrastructure and Support Facilities



**Batumi International  
Container Terminal LLC**  
An ICTSI Group Company



**BICT operates container terminal at berths 4 and 5 and ferry and dry dock terminals at berth 6 of the Batumi Port**

**Terminal Area: 13.6 hectares**

**Container yard: 3.6 hectares at present and 13.6 hectares when fully developed**

**Container Terminal, Berths 4 and 5**

**Length: 284 meters**

**Controlling depth: 11.7 meters**

**Customs Warehouse with 625 m<sup>2</sup> area**

**Ferry and Dry dock terminal, Berth 6**

**Length: 183 meters**

**Controlling Depth: 8 meters**

## **Equipment:**

**2 Mobile harbor cranes**

**2 Portal cranes**

**4 Reach stackers**

**6 Tractors**

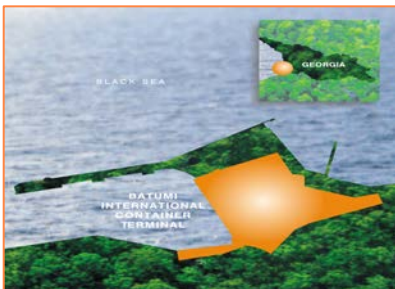
**14 Chassis**

**2 Side lifters**

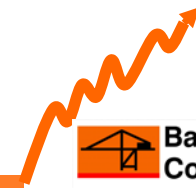
**7 Spreaders**

**6 Forklifts (3/5/16 ton SWL)**

**57 Reefer plugs**



# Specialities



**Batumi International  
Container Terminal LLC**  
An ICTSI Group Company

Discharging and loading of containers from and to vessels with 2 Mobile Harbor Cranes - 100T SWL each.

Handling of containers with Reach Stackers and Prime Movers (trucks with trailers).

Stripping of containers, especially cars, with trained and specialized stripping staff.

Project cargo handling.

General Cargo - scrap handling.



Excellence Uncontained

# Services

ICTSI brings international expertise and standards to new and existing port operations.

Customer friendly approach from Management and Staff.

Stevedoring, handling, storage and delivery or receipt of containers and cargo in one location - unique for Georgian ports and standard worldwide.

Location close to Turkish border makes BICT ideal reloading point from trucks to wide gauge (1520mm) rail wagons for cargo in transit to Armenia, Azerbaijan, Kazakhstan, Turkmenistan, etc.

Customs Officers located on terminal ensure quick dispatch of cargo.





# Container yard



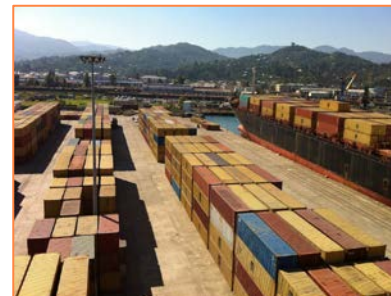
**Batumi International  
Container Terminal LLC**

*An ICTSI Group Company*

Discharging/loading of container vessels at the berths 4&5 with total length of 284 meters and depth of 11.7 meters.

Storage of containers in the yard of 3.6 ha and capacity of 2,500 TEU, equaling to 100K TEU throughput annually at present and 440K TEU when fully developed.

Stripping and stuffing of containers at dedicated Container Freight Station.



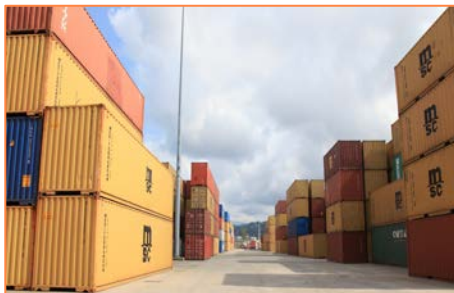
# Stripping and CFS

Storage of cargo in Customs  
Warehouse with 625 sqm of storage  
area.

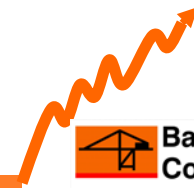
Handling of containers and cargo to and  
from multimodal units of transports  
(trucks and rail wagons).

Service of ferries through automated  
Ferry Bridge - rail wagons, trucks and  
passengers.

Service of general cargo vessels on  
berth no.6



# WE ARE ONE



**Batumi International  
Container Terminal LLC**  
An ICTSI Group Company



# We are one

**We share the same hopes**

**We share the same commitment to a growing economy**

**BICT – one with the Government of Georgia in improving the national economy through a world class trade gateway at the Port of Batumi**

**BICT – Georgia’s trade gateway offering fast and efficient cargo handling services.**

**Drawing from ICTSI’s expertise and best practices gathered from global operations and combining these with the Georgians’ innovative approach, BICT has emerged as one of the most efficient terminals in the region and the fastest growing container terminal in the Black Sea.**

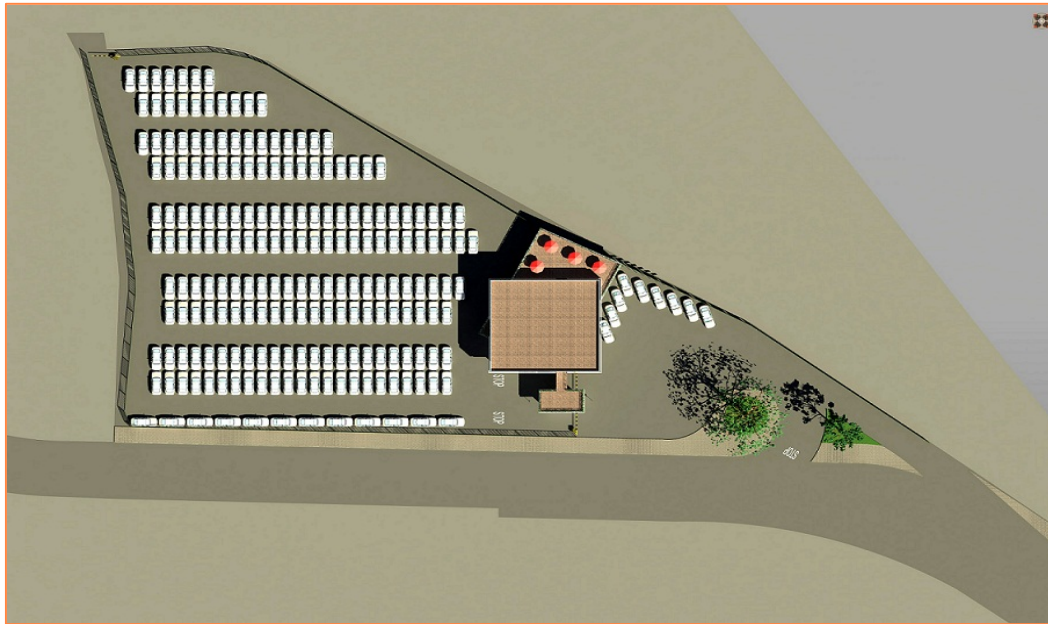
**We are the One! Batumi Port is a main transportation trade point in the Black Sea basin.**

**Excellence Uncontained**

# Recently accomplished Project



**Batumi International  
Container Terminal LLC**  
An ICTSI Group Company

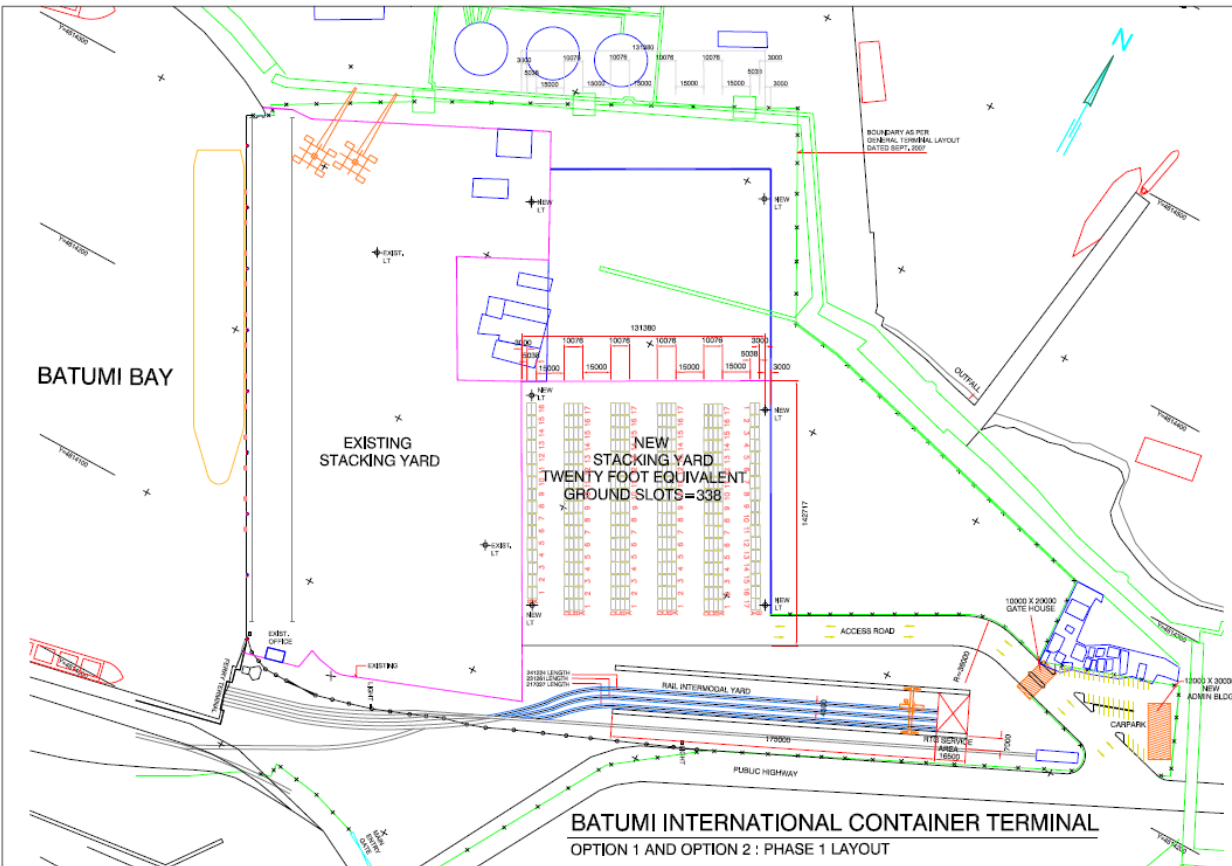


## Customs Clearance Facility (GEZI)

The new building serves as a customs clearance zone on the basis of a single window principal (GEZI). Officially opening the new building and area for cargo, parking cars, equipped with necessary equipment, was held on May 31 this year. The cost of work was about \$2 million.



# Development Plans



The implementation of a larger project to expand the container yard and rail facilities should start this year. The total cost of the first phase of development will be about \$ 20 million.

The strategy includes a range of activities throughout the territory leased by BICT in the port of Batumi. Plans are in place to refurbish and expand the Terminal capacity to accommodate larger volumes.

# BICT Contact



**Batumi International  
Container Terminal LLC**  
An ICTSI Group Company

# www.bict.ge

## Contact

11, Baku street

Batumi 6010

Georgia

Tel: +995 422 27 64 52

Fax: +995 422 27 62 69

Email: [marketing@bict.ge](mailto:marketing@bict.ge)

Excellence Uncontained